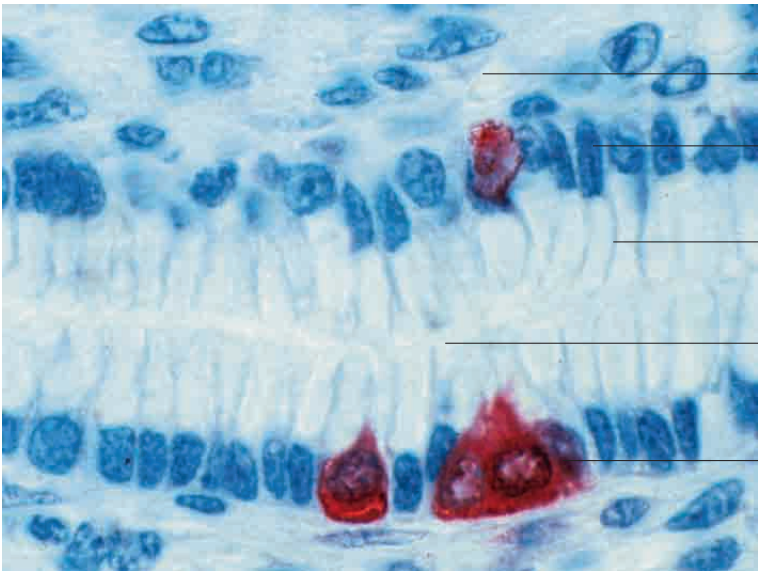
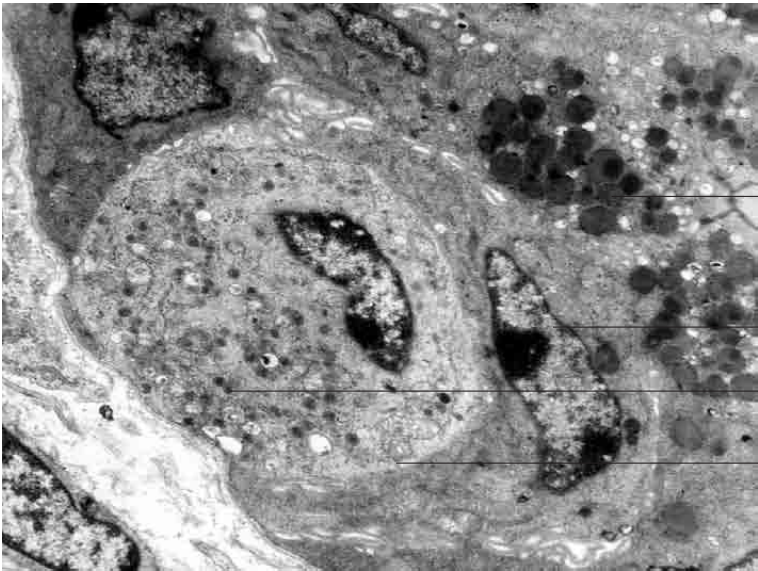
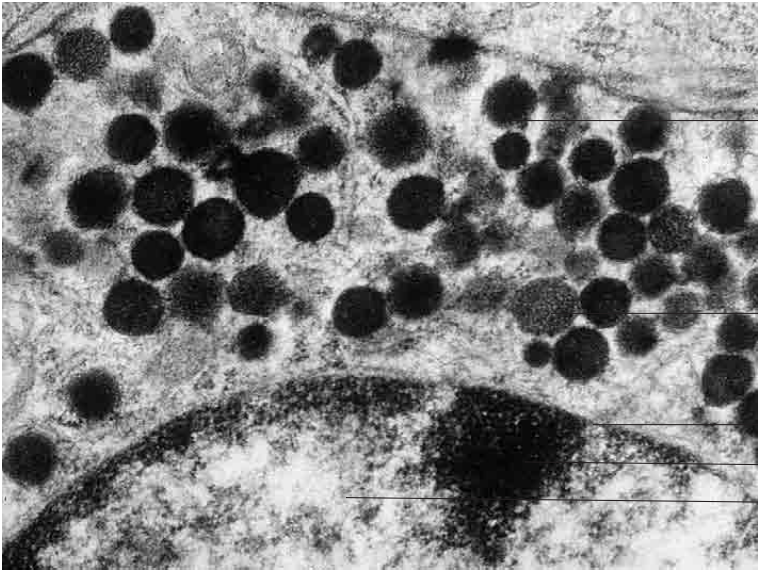
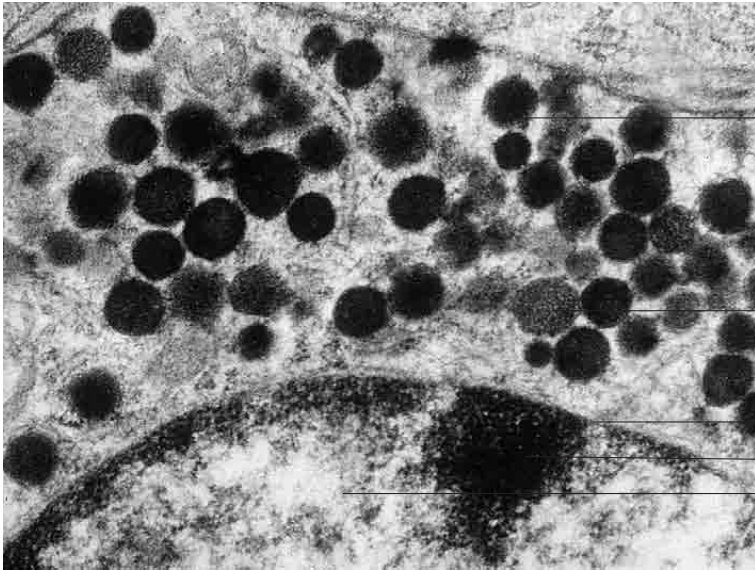


2 Epithelial tissue

---





Mature endocrine granule

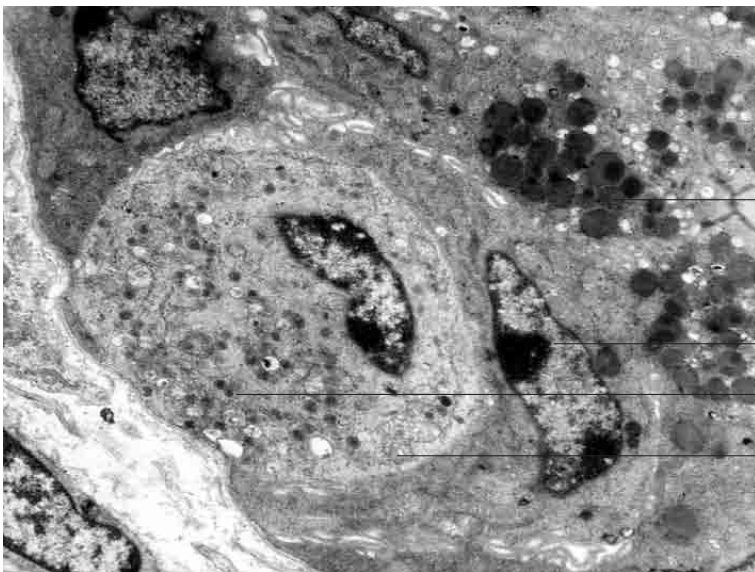
Early endocrine granule

Perinuclear space in endocrine cell

Heterochromatin

Euchromatin

Endocrine cell. Epithelium of small intestine, dog; x900.



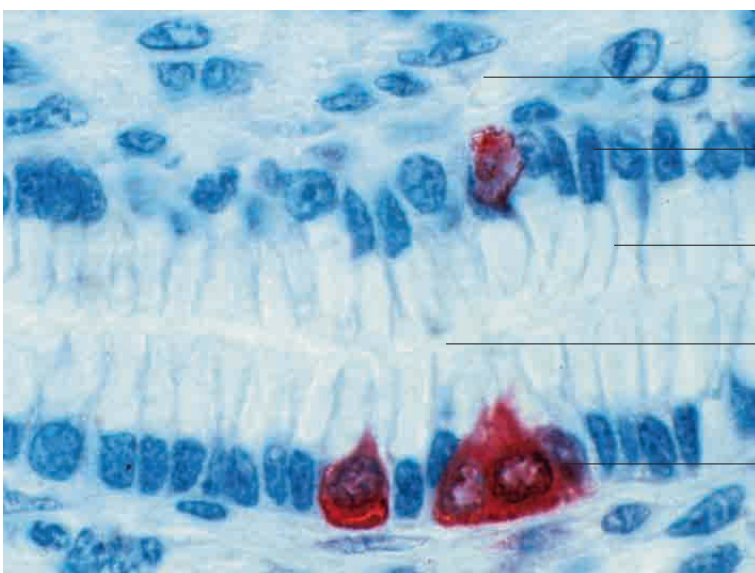
Granule in exocrine mucous gland

Nucleus of inactive exocrine mucous gland

Endocrine granule

Endocrine cell (gastrin cell)

Endocrine cell (gastrin cell), stomach, dog; x4500.



loose connective tissue with fibrocyte nucleus

Row of nuclei in glandular epithelium (simple columnar)

Cytoplasm of exocrine gland cell

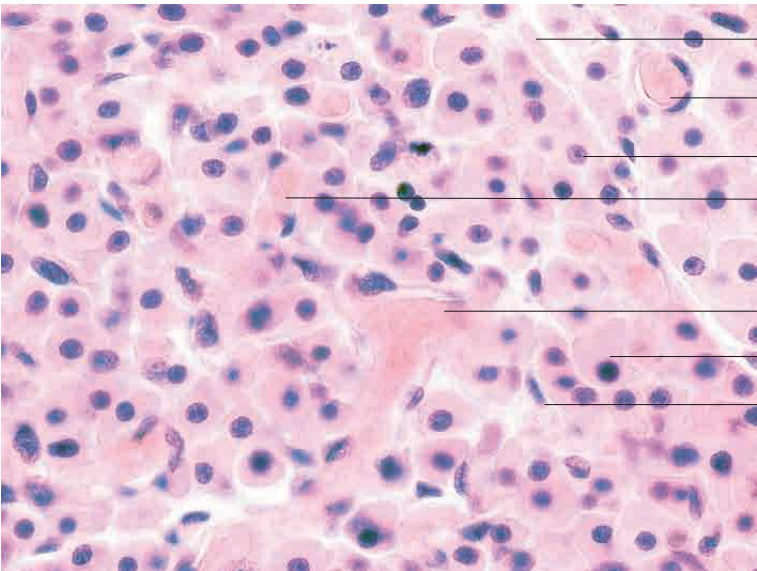
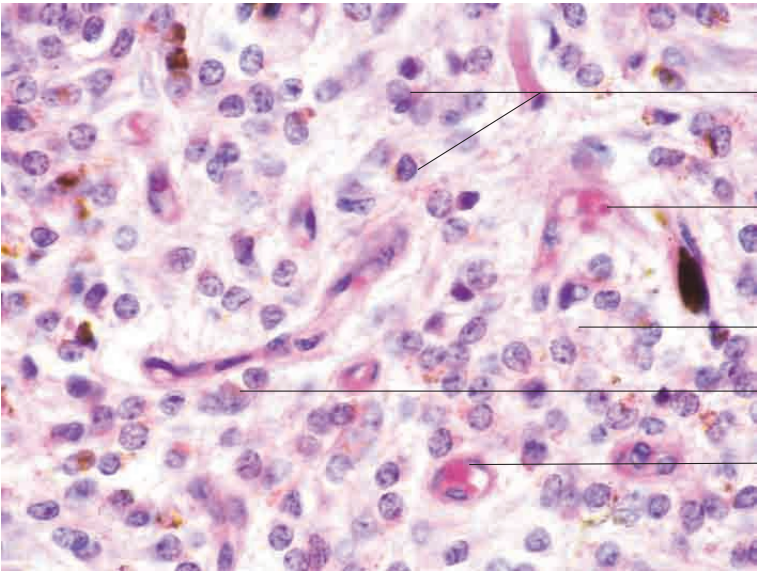
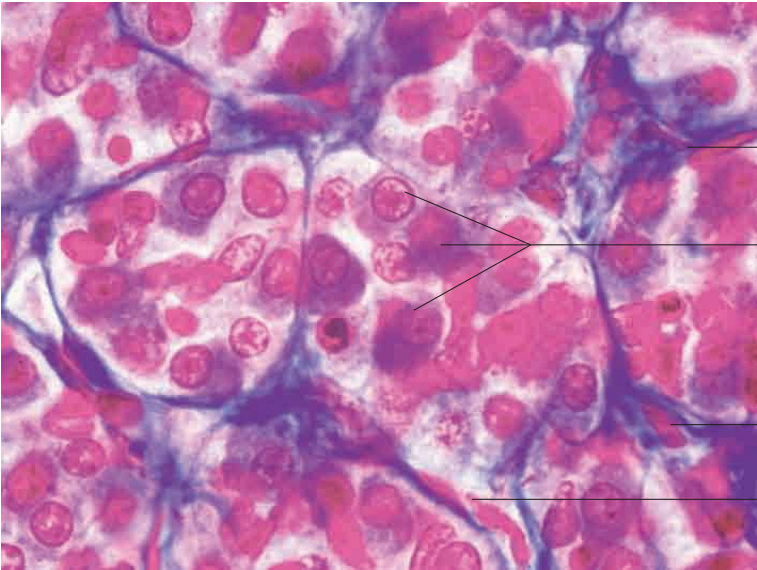
Lumen of a tubular gland (longitudinal section)

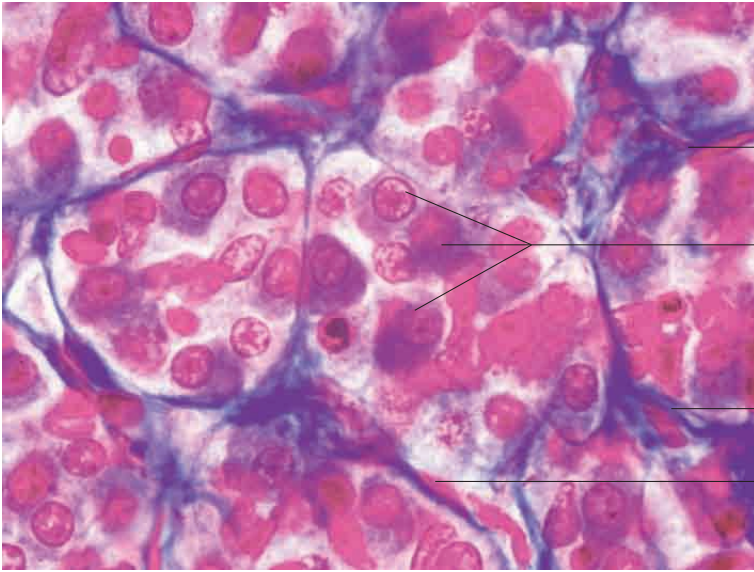
Intraepithelial endocrine gland cell

Tubular gland (longitudinal section) with endocrine G cells, stomach, dog. Cell-specific stain; x250.

2 Epithelial tissue

---





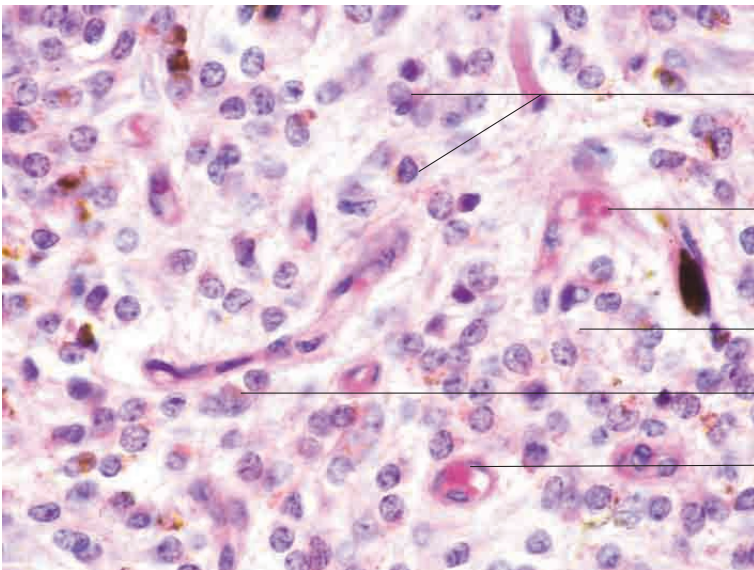
Loose connective tissue with capillary

Endocrine cells

Loose connective tissue with capillary

Loose connective tissue with capillary

Hypophysis, ox. Azan stain; x480.



Endocrine cells (pineal cells)

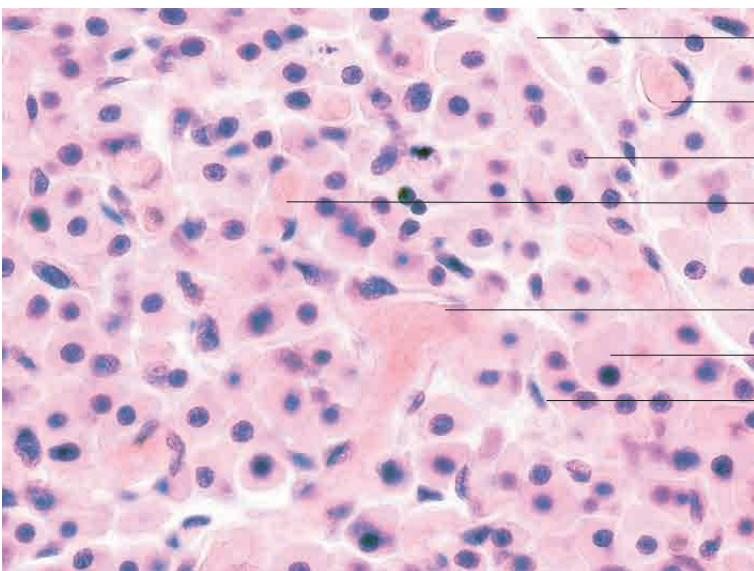
Loose connective tissue with capillary

Cytoplasm of an endocrine cell

Nuclei of endocrine cells

Loose connective tissue with capillary

Epiphysis, horse. H.E. stain; x480.



Loose connective tissue

Capillary

Endocrine cell

Capillary

Loose connective tissue with capillary

Endocrine cell

Nucleus in connective tissue

Parathyroid gland, dog. H.E. stain; x300.