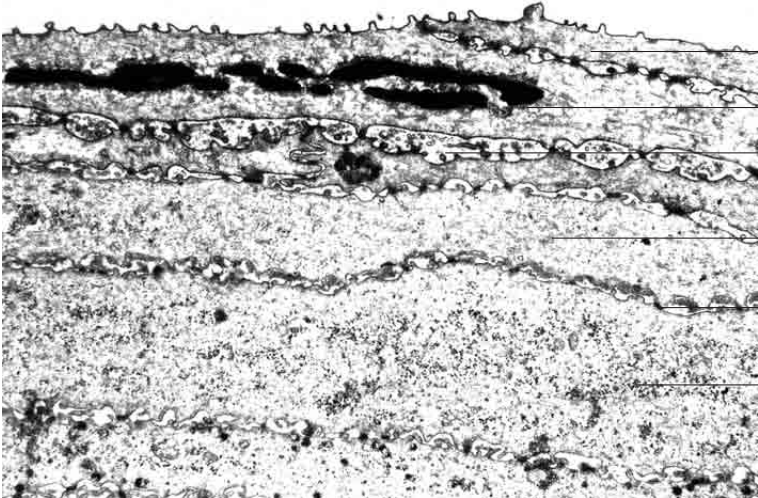
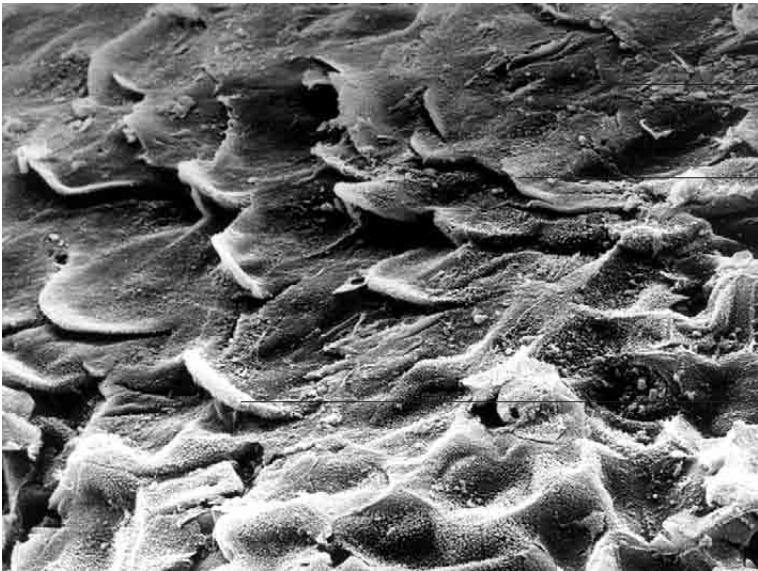
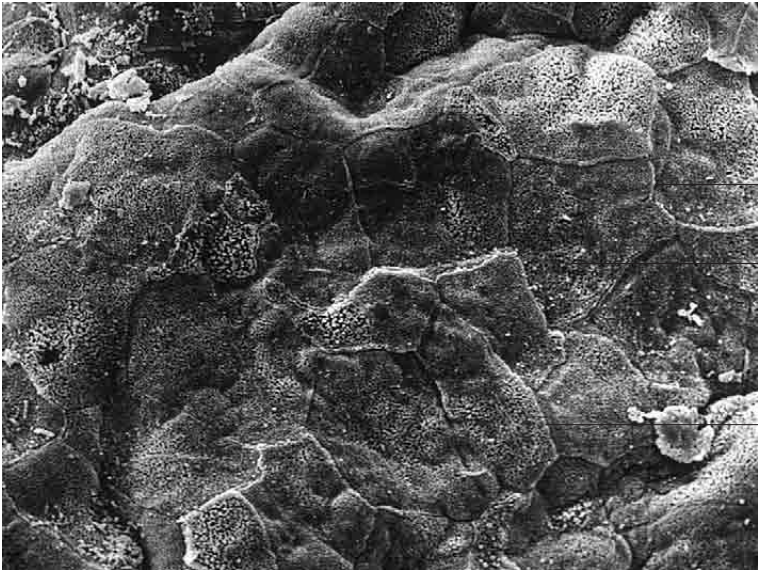
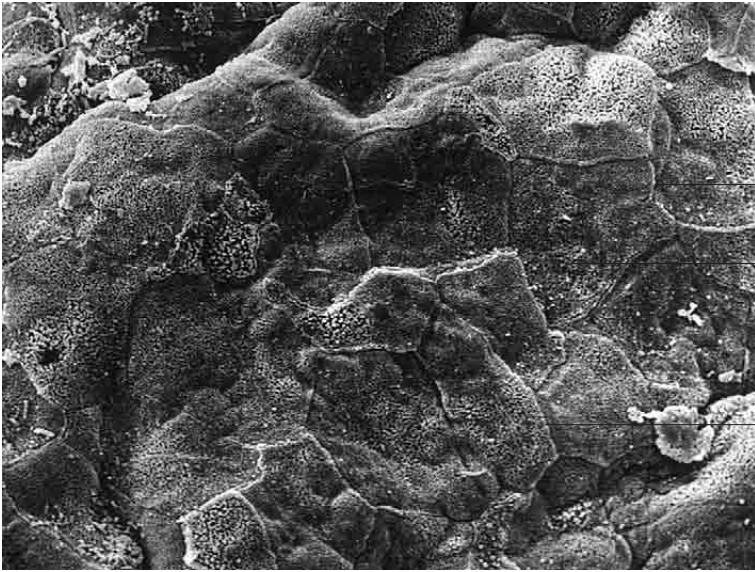


2 Epithelial tissue

---



## Stratified epithelium

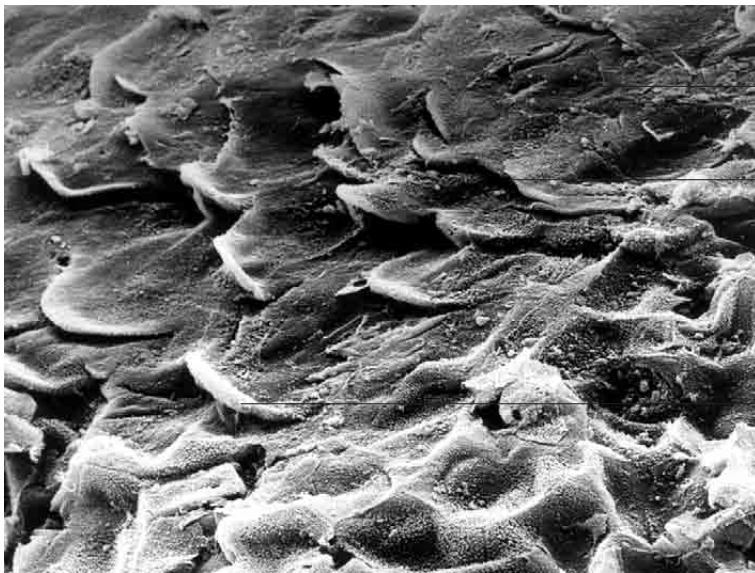


Surface view of boundary between adjacent surface epithelial cells

Cell surface with short microvilli

Surface view of boundary between adjacent surface epithelial cells

Surface view of stratified squamous epithelium, rumen, sheep; x800.

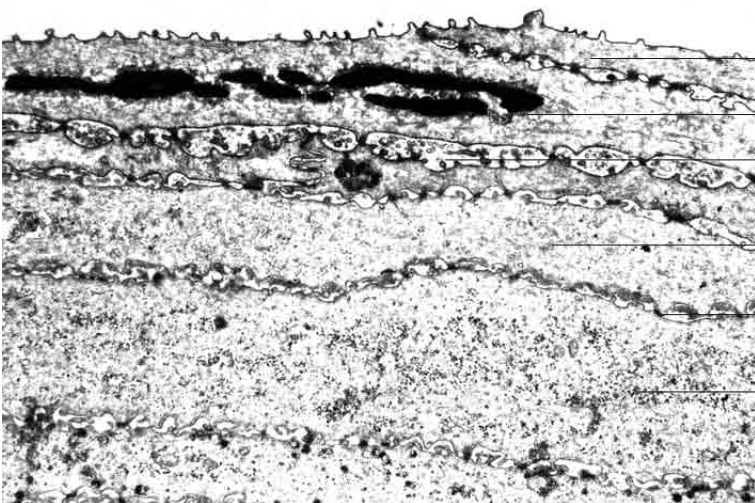


Surface of keratinised epithelial cell

Free edge of keratinised epithelial cell

Free edge of keratinised epithelial cell

Surface view of stratified squamous epithelium, skin, dog; x1200.



Cytoplasm of non-keratinised epithelial cell

Nucleus

Expanded intercellular space with irregularly formed microplacae and microvilli

Cytoplasm of non-keratinised epithelial cell

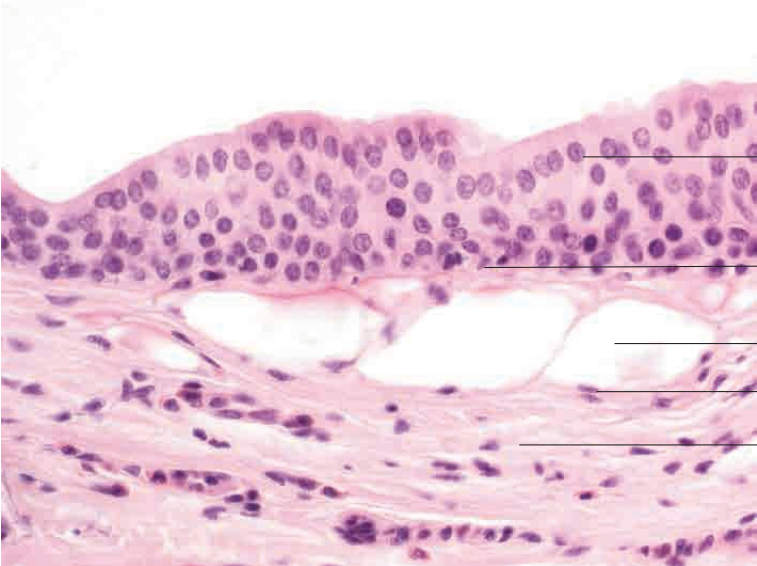
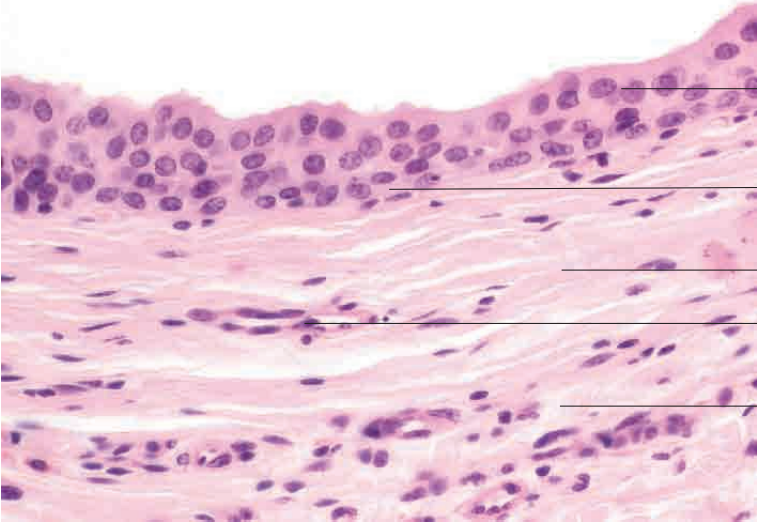
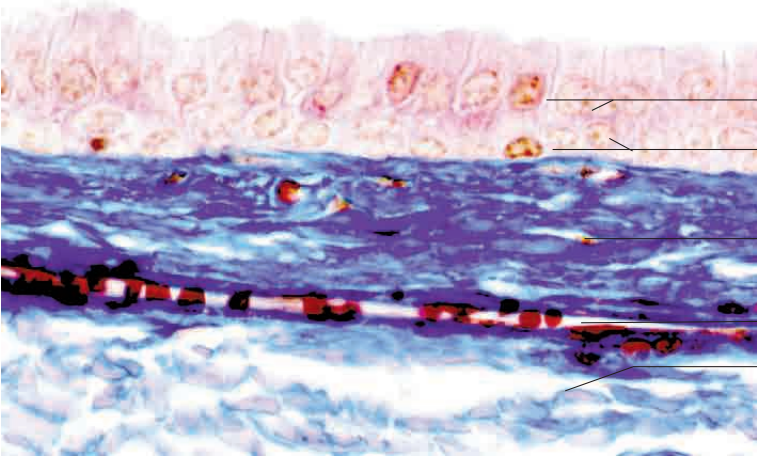
Intercellular space with areas of desmosomal contact

Cytoplasm of deeply located epithelial cell

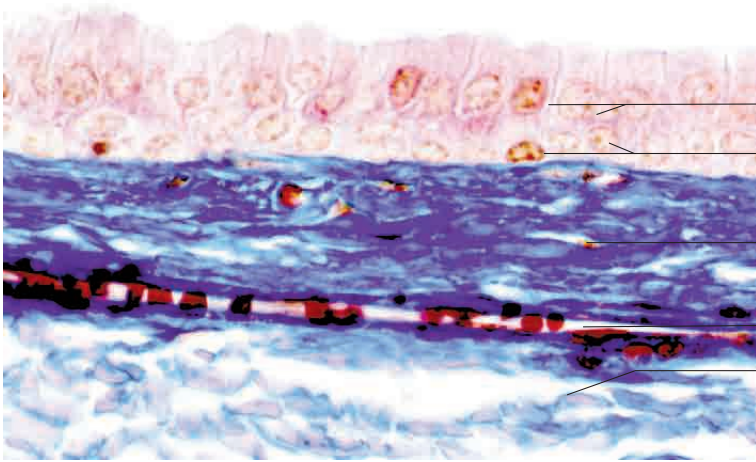
Non-keratinised stratified squamous epithelium, rumen, ox; x6500.

2 Epithelial tissue

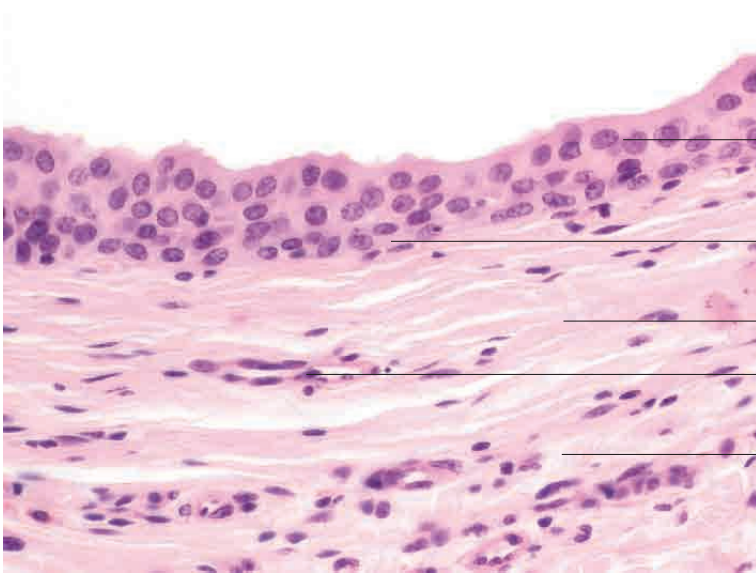
---



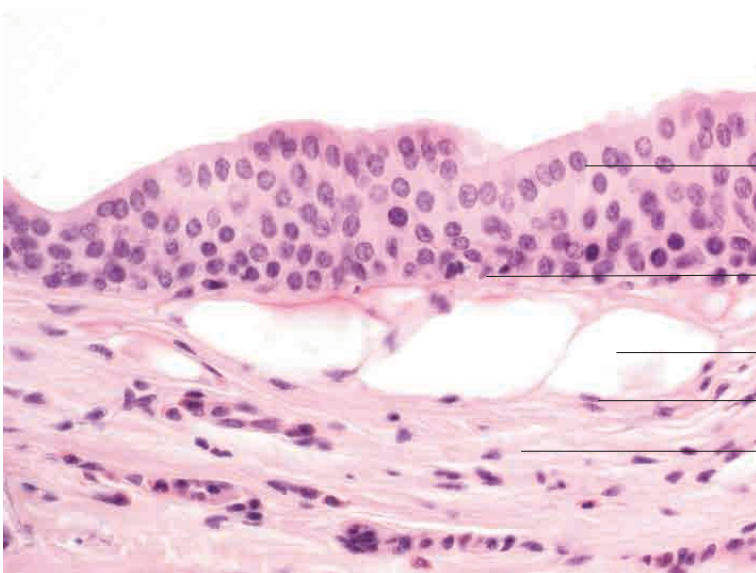
## Stratified epithelium



- Nucleus of cell in superficial epithelial layer
- Nucleus of cell in deep epithelial layer
- Nucleus of fibrocytes in loose connective tissue
- Capillary with erythrocytes
- Loose connective tissue
- Bilayered cuboidal epithelium, secretory duct, parotid gland, ox. Azan stain; x100.



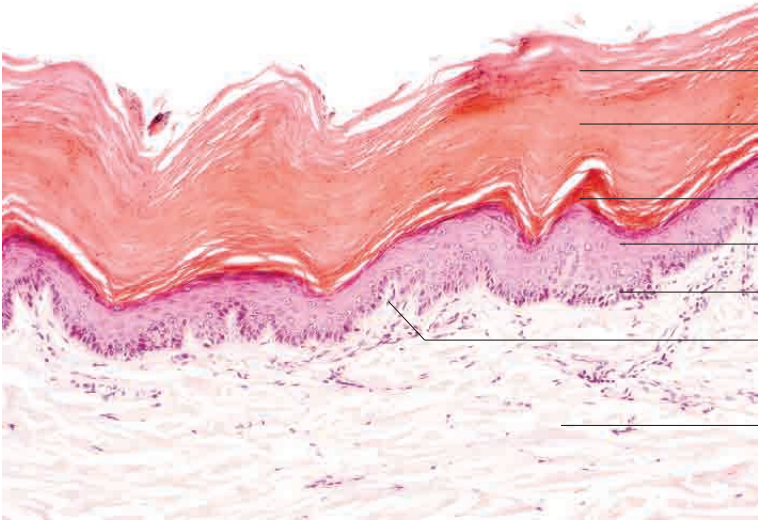
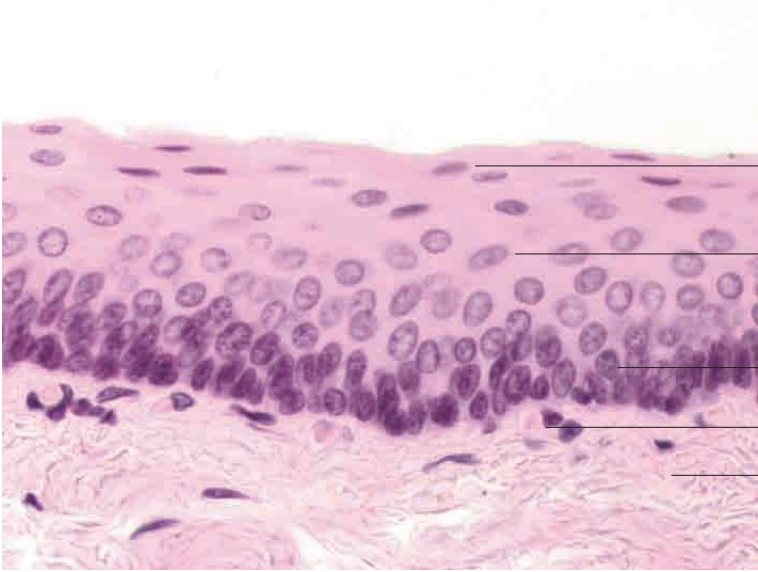
- Superficially located cells in stratified cuboidal epithelium
- Basally located cells of stratified cuboidal epithelium
- Loose connective tissue
- Capillary
- Loose connective tissue
- Stratified cuboidal epithelium, excretory duct, parotid gland, ox. H.E. stain; x80.



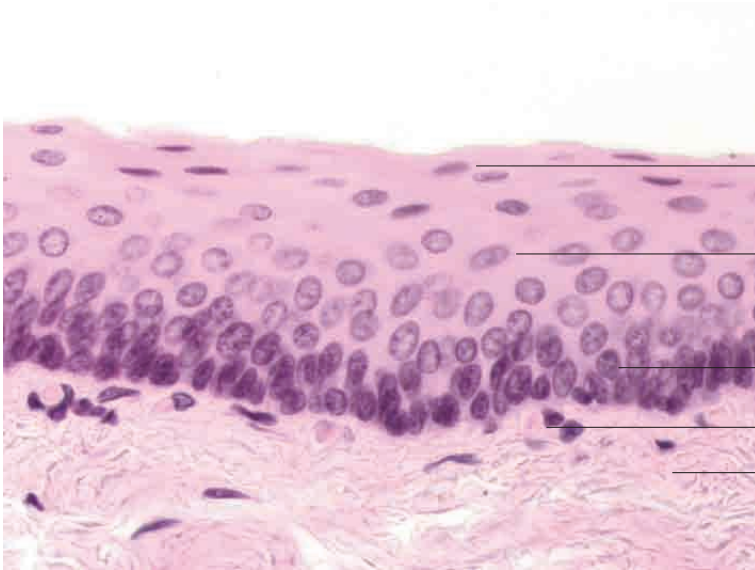
- Superficially located cells in stratified cuboidal to (mostly) columnar epithelium
- Basally located cells in cuboidal layers in stratified epithelium
- Adipose tissue
- Peripherally located nucleus of adipocyte
- Loose connective tissue
- Stratified cuboidal epithelium, excretory duct, parotid gland, ox. H.E. stain; x80.

2 Epithelial tissue

---



## Stratified epithelium



Superficial epithelial cell

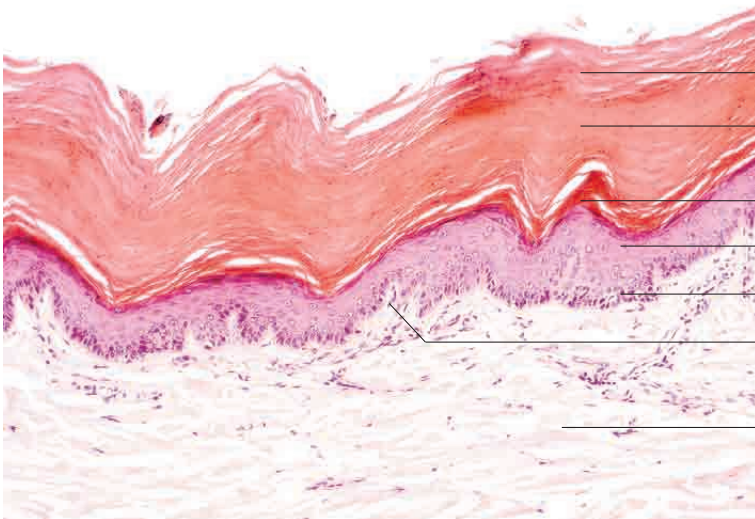
Stratum spinosum

Stratum basale

Nucleus of fibrocyte

Loose connective tissue

Non-keratinised stratified squamous epithelium, oesophagus. H.E. stain; x100.



Desquamated keratinised cells of stratum corneum

Stratum corneum

Stratum lucidum

Stratum granulosum

Stratum basale

Papillary body

Connective tissue in subcutis

Strongly keratinised, stratified squamous epithelium, digital pad, dog. H.E. stain; x40.



Stratum corneum

Stratum lucidum

Stratum granulosum

Stratum spinosum

Papillary body (cross section)

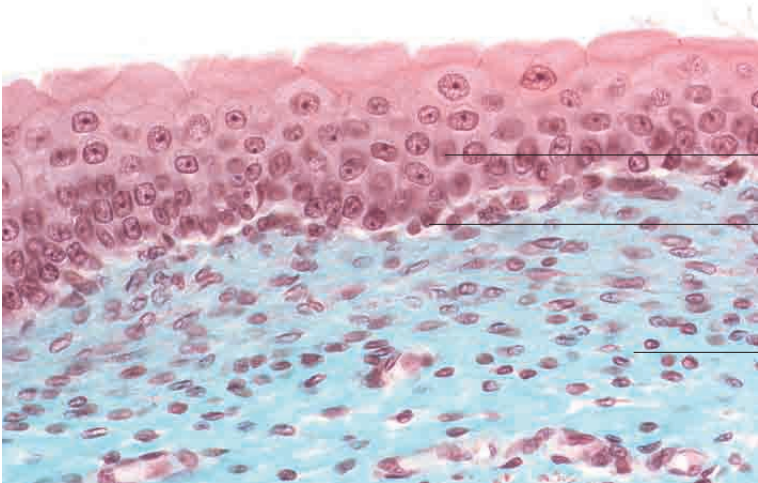
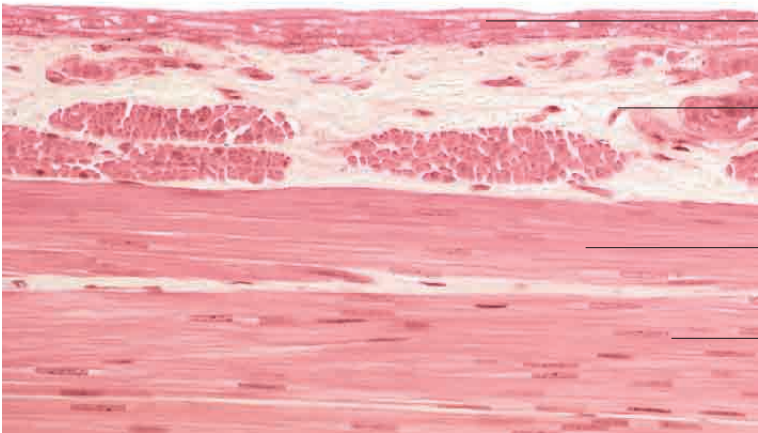
Papillary body (longitudinal section)

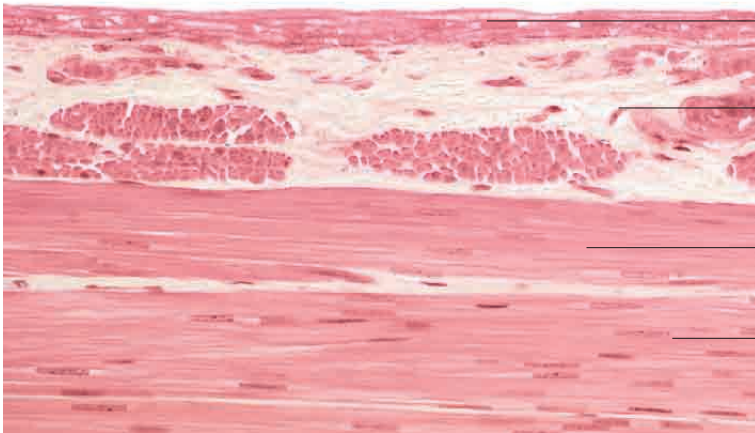
Connective tissue in dermis (corium)

Keratinised stratified squamous epithelium, digital pad, cat. H.E. stain; x100.

2 Epithelial tissue

---





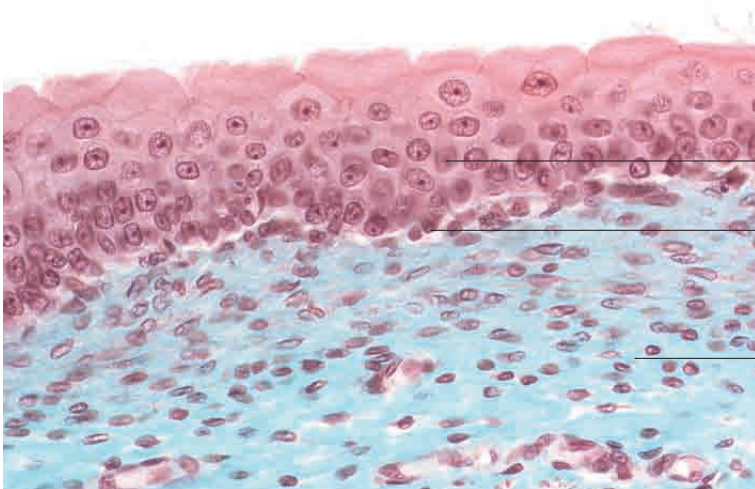
Flattened transitional epithelium (bladder distended)

Loose connective tissue

Smooth muscle (longitudinal section)

Smooth muscle (oblique and longitudinal section)

Transitional epithelium, distended urinary bladder, dog. H.E. stain; x440.

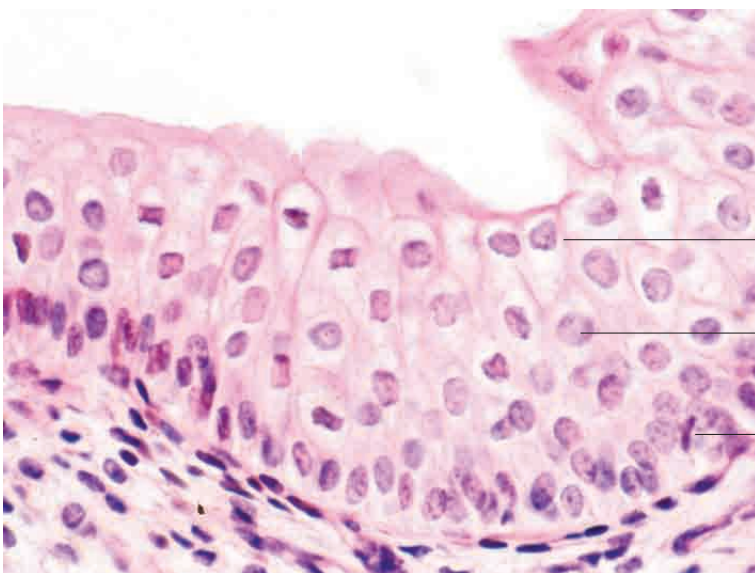


Transitional epithelium (bladder contracted)

Basal layer of transitional epithelium

Loose connective tissue

Transitional epithelium, non-distended urinary bladder, dog. Goldner's Masson trichrome stain; x250.



Superficial cell layers of transitional epithelium (bladder contracted)

Middle cell layers of transitional epithelium (bladder contracted)

Deep cell layers of transitional epithelium (bladder contracted)

Transitional epithelium, non-distended urinary bladder, dog. H.E. stain; x440.