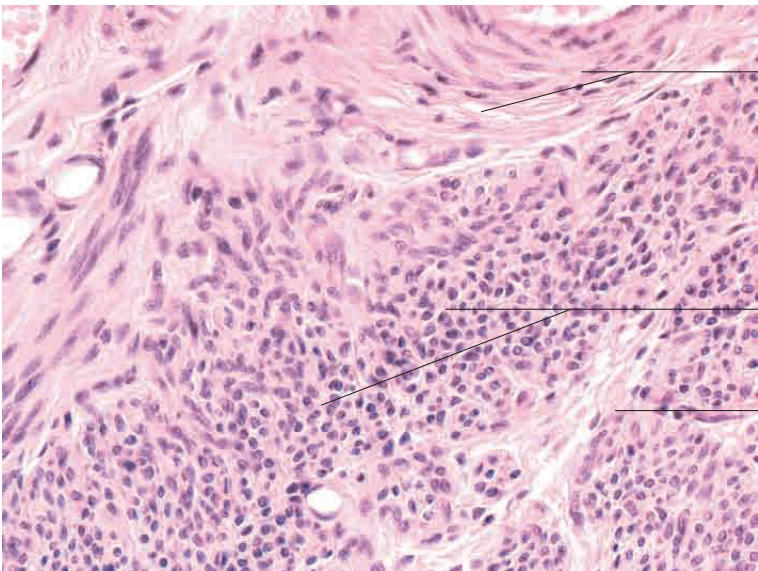
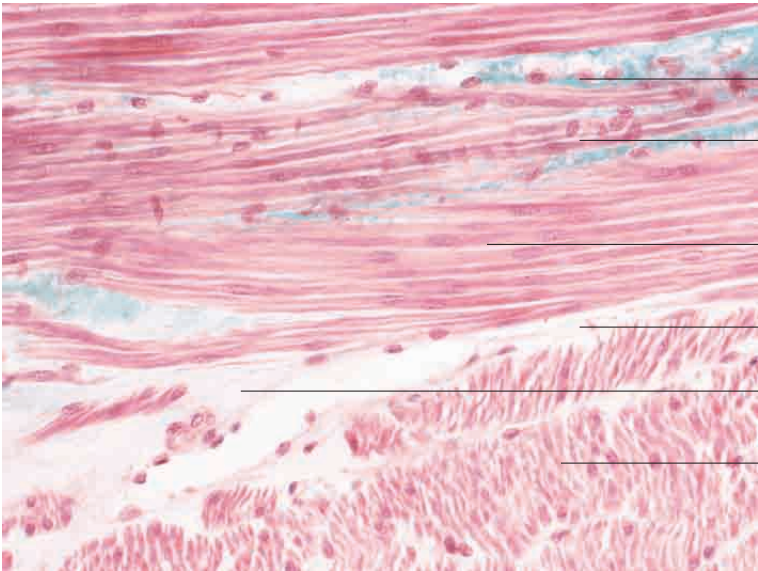
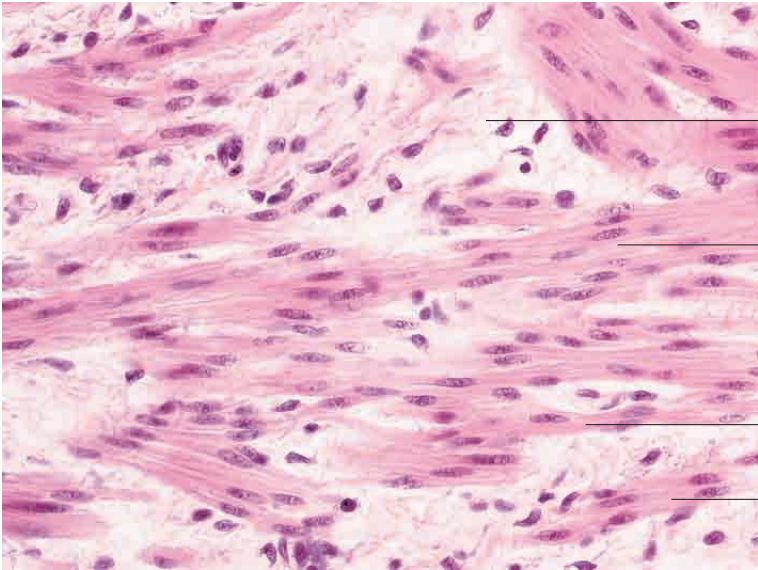
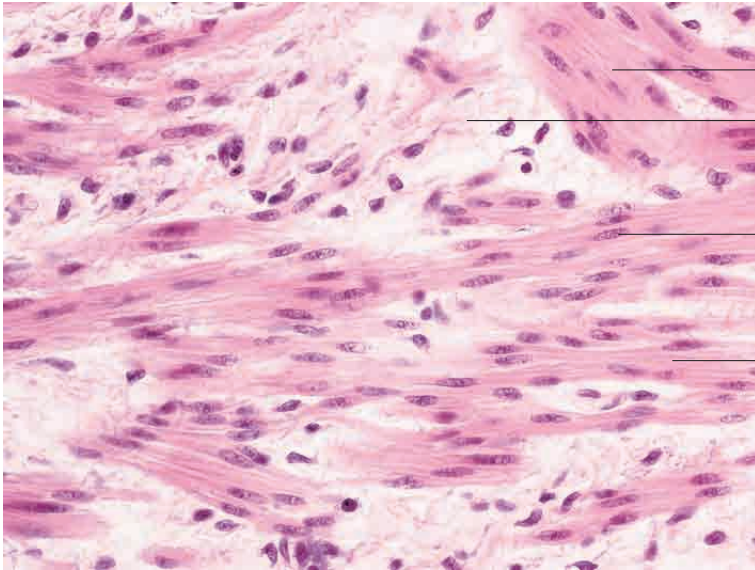


4 Muscle tissue



Smooth muscle



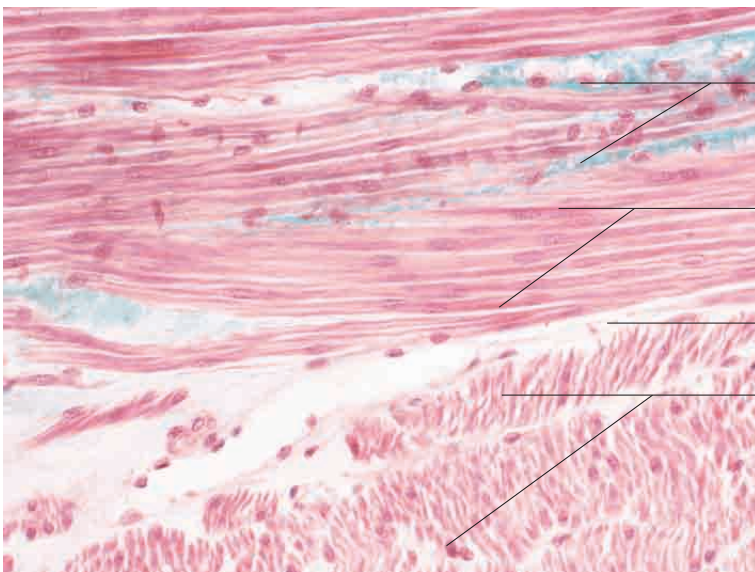
Smooth muscle cell bundle (oblique section)

Loose connective tissue layer permitting movement between muscle layers

Elongated centrally located nucleus of smooth muscle cell (longitudinal section)

Elongated, tapering cytoplasm of a smooth muscle cell

Smooth muscle, small intestine, cat. H.E. stain; x400.



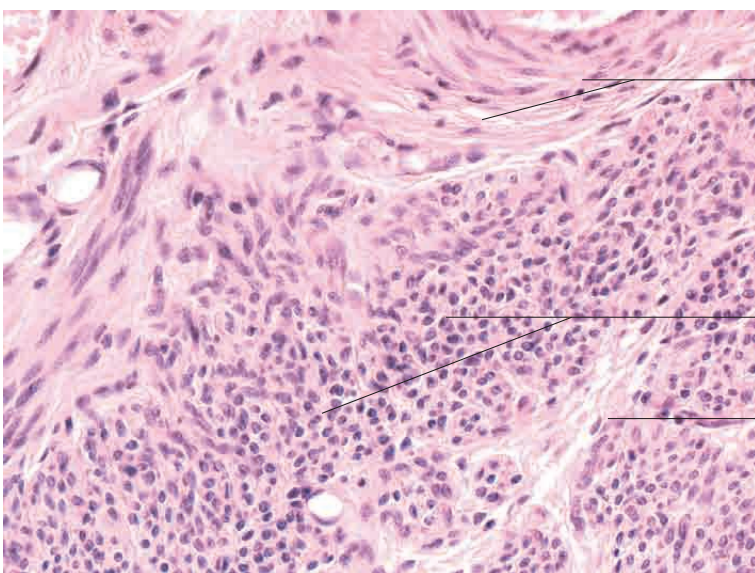
Perimysium composed of connective tissue with blood vessels and autonomic nerves

Smooth muscle cell bundle with central nuclei and elongated cytoplasm (longitudinal section)

Perimysium

Oblique and cross sections of smooth muscle cells

Smooth muscle, small intestine, cat. H.E. stain; x400.



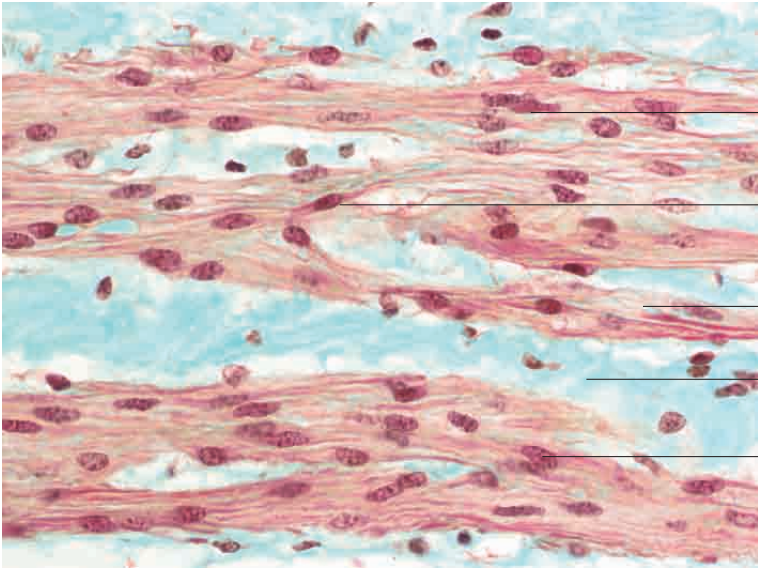
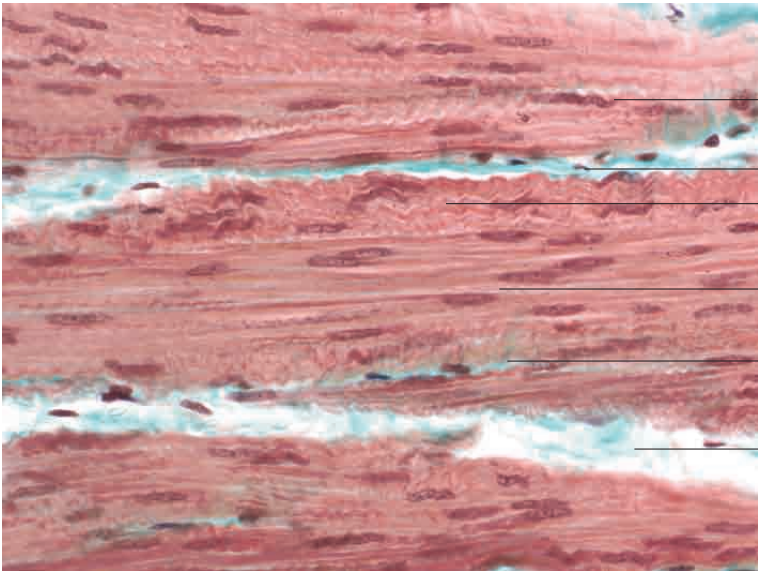
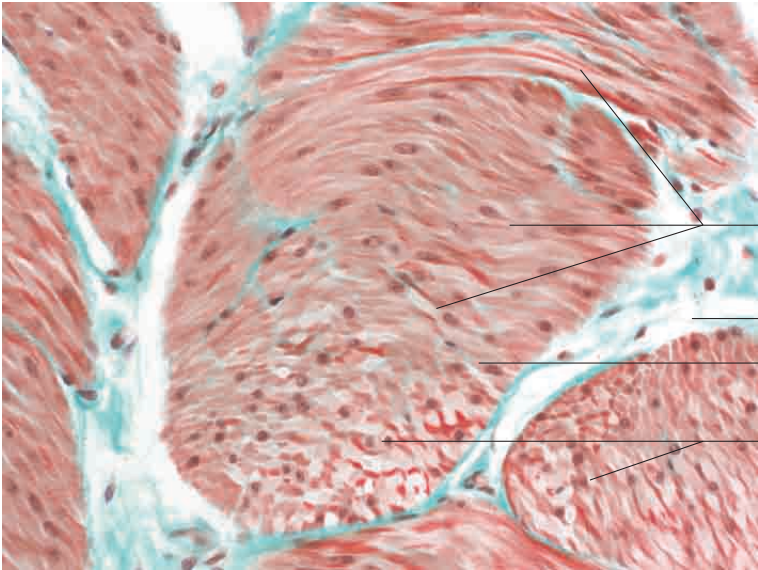
Smooth muscle cells (oblique and cross sections)

Smooth muscle cells (cross section)

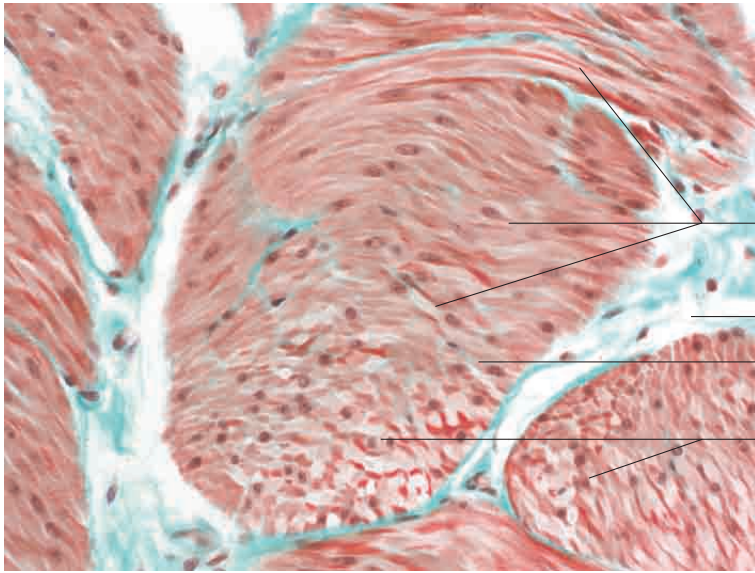
Perimysium

Smooth muscle, urinary bladder, cat. H.E. stain; x350.

4 Muscle tissue



Smooth muscle



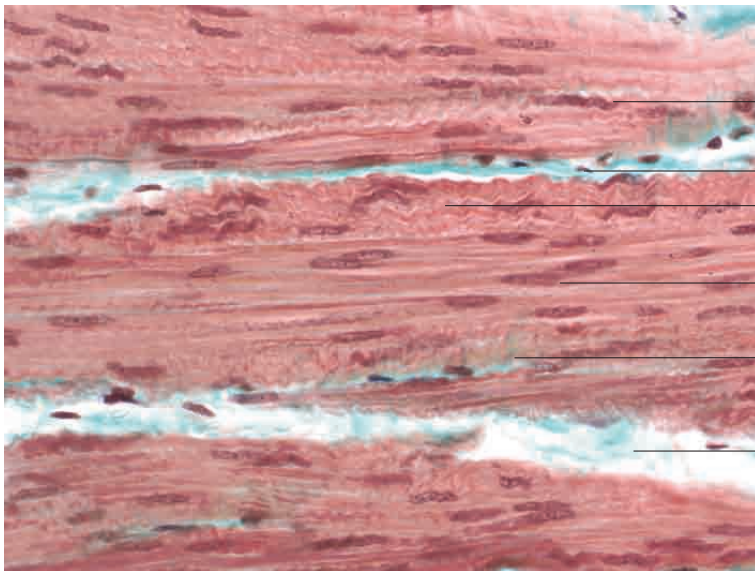
Predominantly longitudinally oriented smooth muscle fibre bundles closely invested with endomysium (nuclei appear longitudinally oval)

Perimysium

Endomysium

Predominantly transversely oriented smooth muscle fibre bundles (nuclei appear round)

Smooth muscle, urinary bladder, cat. Golder's Masson trichrome stain; x480.



Nucleus of smooth muscle cell (weakly contracted)

Perimysium with fibrocytes

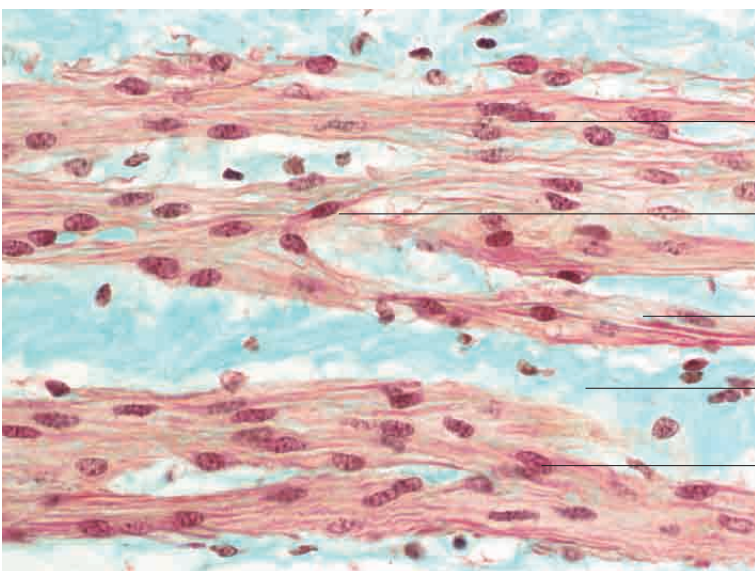
Cytoplasm of smooth muscle cell (weakly contracted)

Nuclei and cytoplasm of smooth muscle cells (relaxed)

Endomysium surrounding isolated smooth muscle cell (at transition to perimysium)

Perimysium with fibrocytes

Smooth muscle, urinary bladder, cat. H.E. stain; Goldner's Masson trichrome stain; x480.



Central nucleus and cytoplasm of weakly contracted smooth muscle cell

Heterochromatic nucleus of smooth muscle cell

Endomysium

Perimysium with fibrocytes

Euchromatic nucleus of smooth muscle cell with spindle-like elongation of cytoplasm

Smooth muscle, gall bladder, ox. Goldner's stain; x600.