

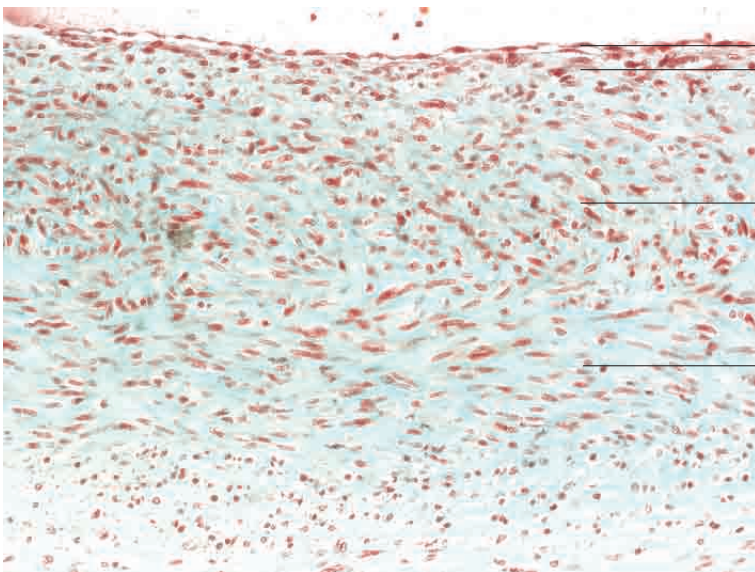
Loose adventitial connective tissue

Blood cells in lumen

Nucleus of endothelial cell

Thin tunica media

Branching vein, cat.  
H.E. stain; x180.

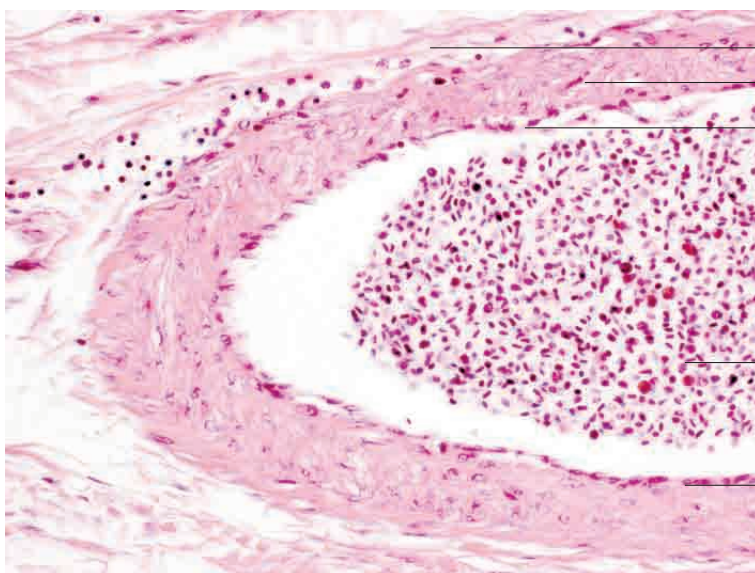


Single-layered endothelium  
and thin subendothelial layer

Tunica media, predominantly circularly  
arranged fibres

Tunica media, predominantly  
longitudinally to obliquely  
arranged fibres

Vein, horse. Goldner's Masson trichrome stain; x120.



Tunica adventitia

Tunica media

Tunica interna

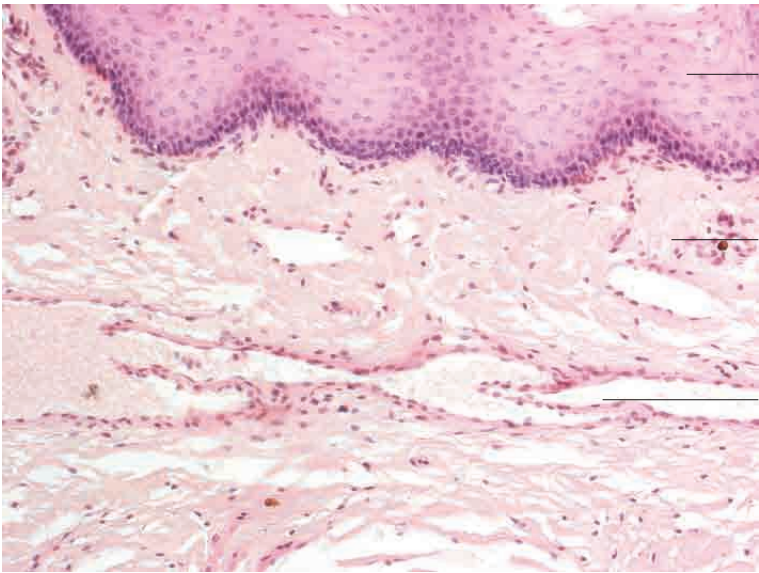
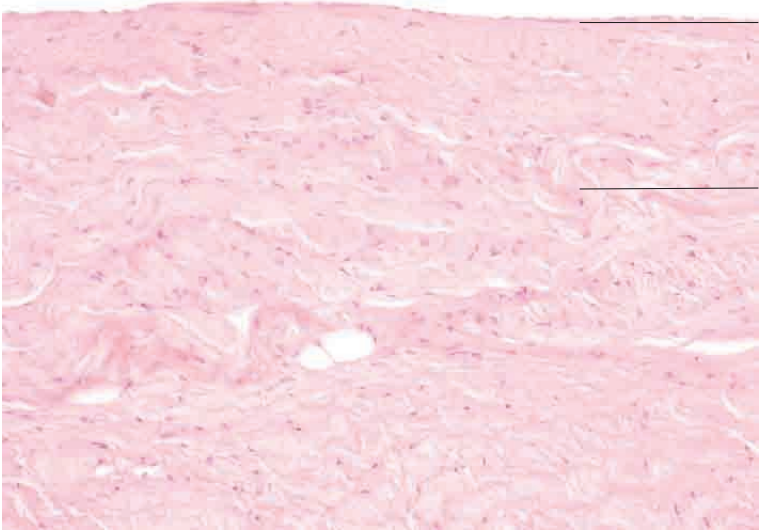
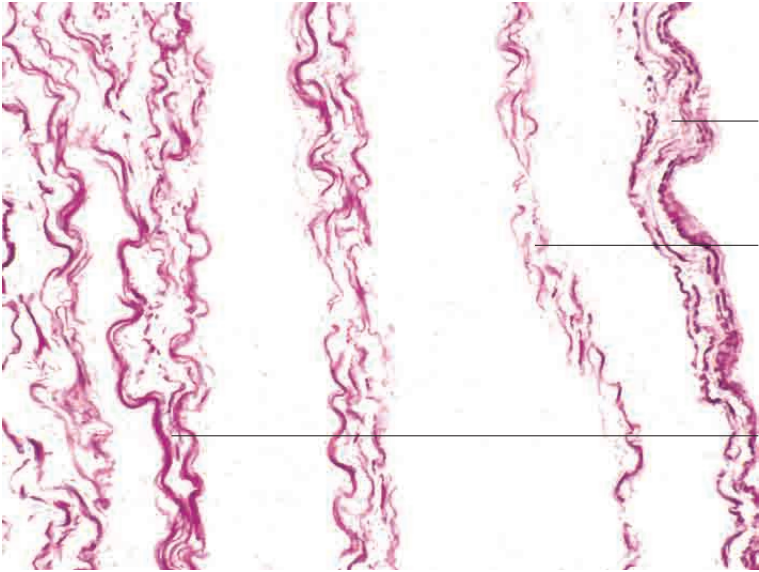
Blood cells in lumen, nucleated erythrocytes

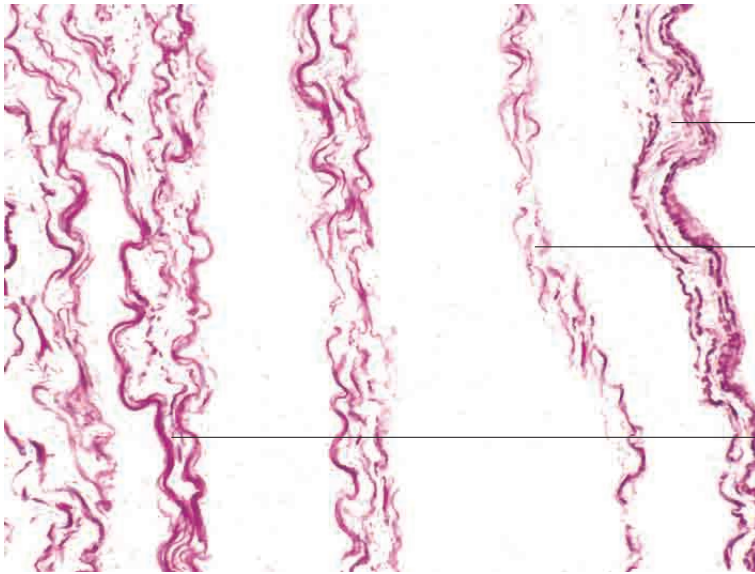
Endothelium

Vein, chicken. H.E. stain; x120.

6 Circulatory system

---



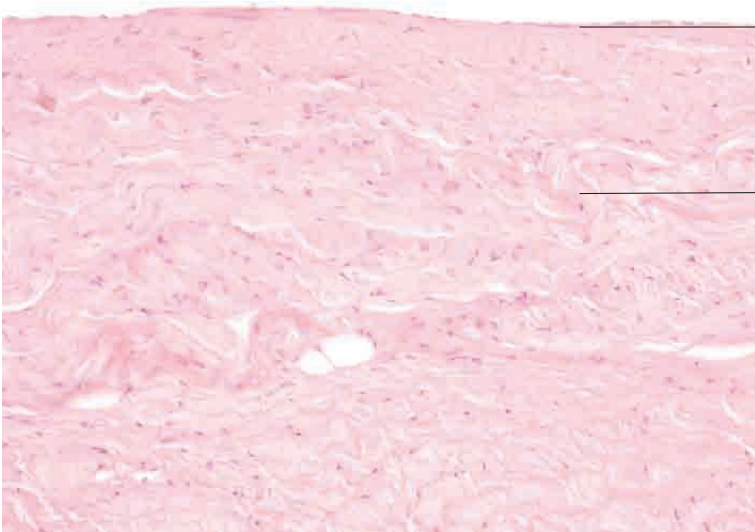


Tunica interna with weakly developed rete elasticum

Modestly developed elastic fibres in tunica media

External elastic membrane

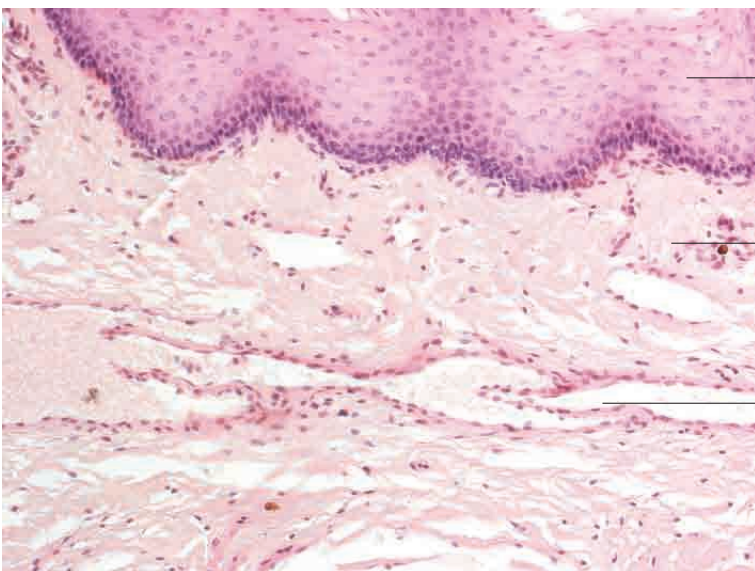
Vein, dog. Resorcin-fuchsin; x480.



Endothelium

Tunica media with small areas of smooth muscle and abundant collagen fibres

Wall of vein (caudal vena cava), dog. H.E. stain; x180.



Stratified squamous epithelium

Lamina propria mucosae

Vein with valves (longitudinal section)

Vein with valves, tongue, dog. H.E. stain; x200.