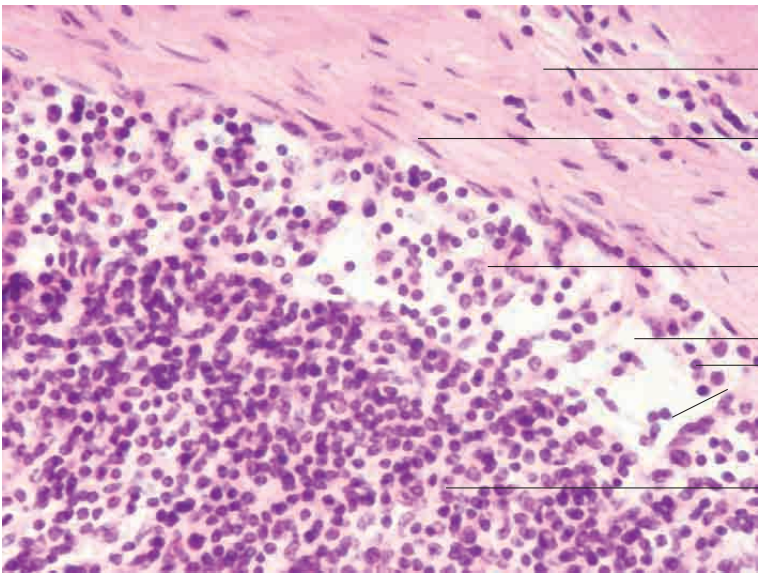
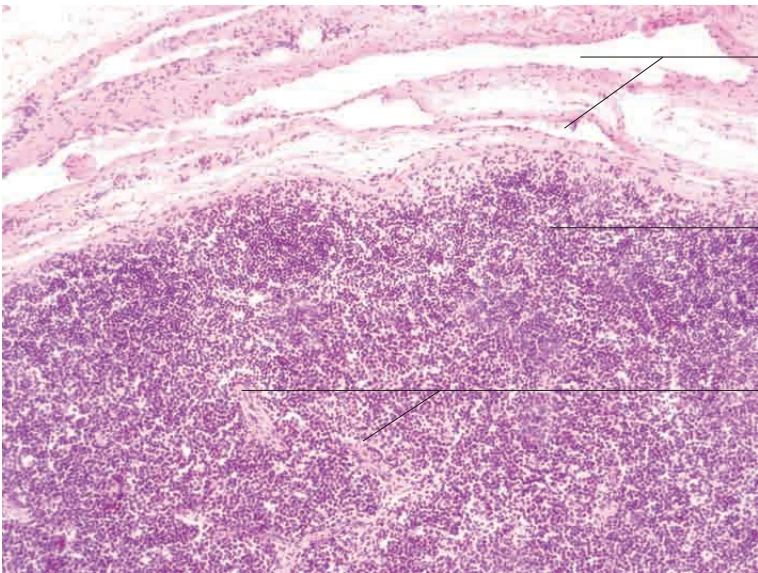
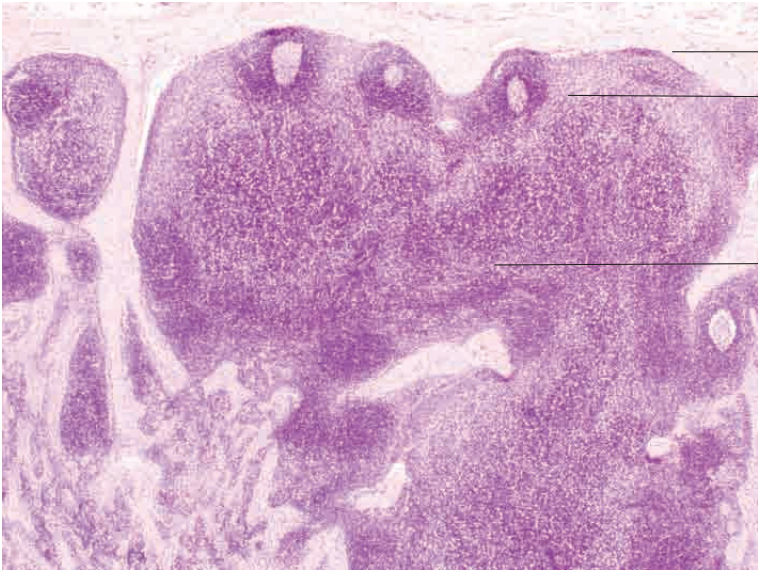
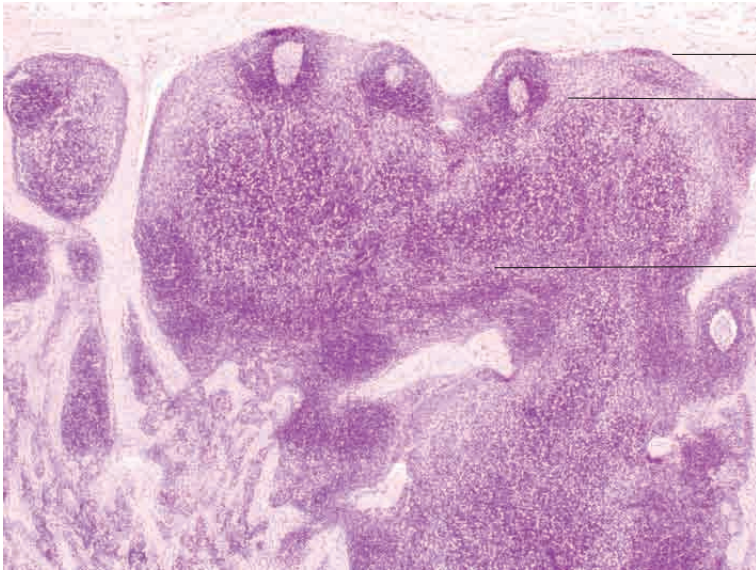


8 Lymphatic organs

---

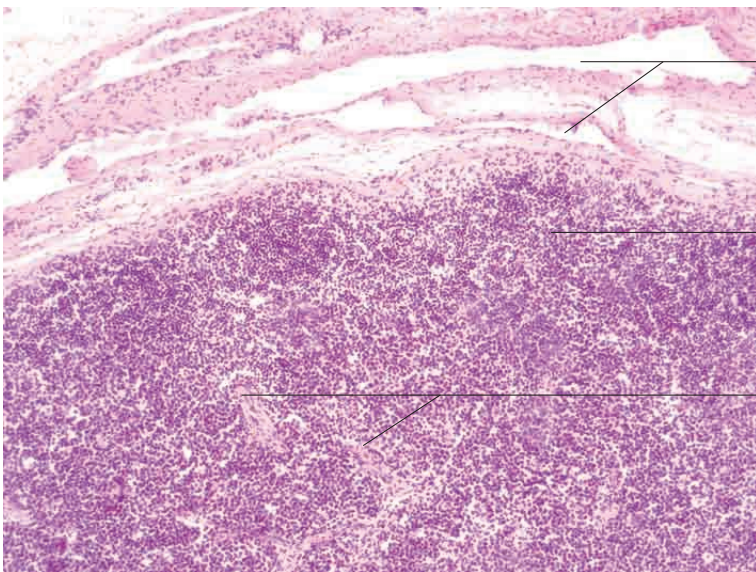






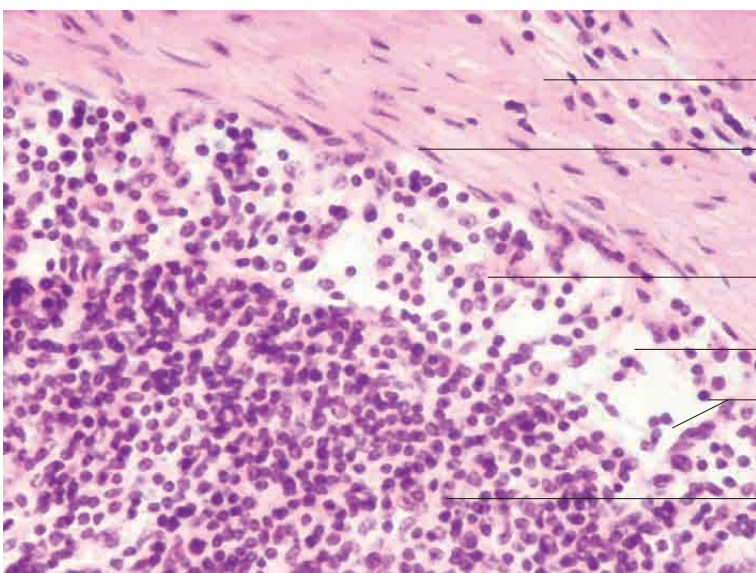
- Capsule
- Cortex with lymphoid follicles
- Medulla

Lymph node. H.E. stain; x40.



- Afferent lymph vessel
- Lymphoid follicle in cortex
- Connective tissue trabecula

Lymph node, horse. H.E. stain; x100.



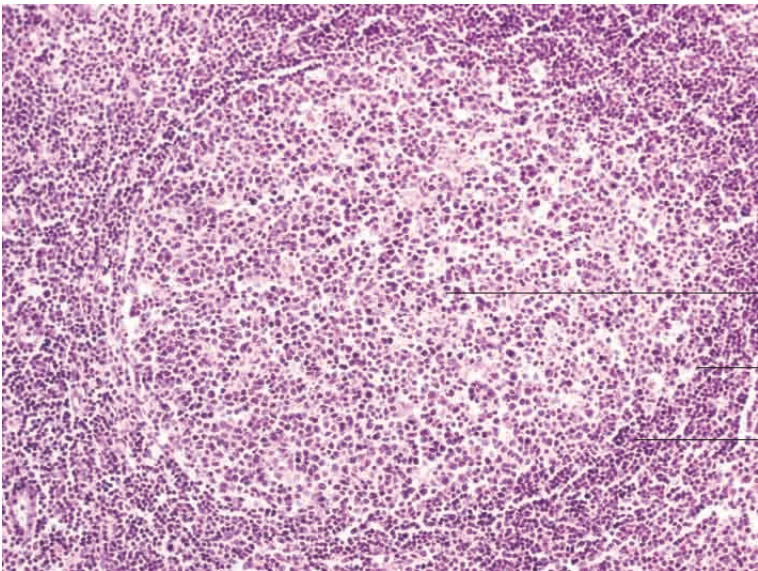
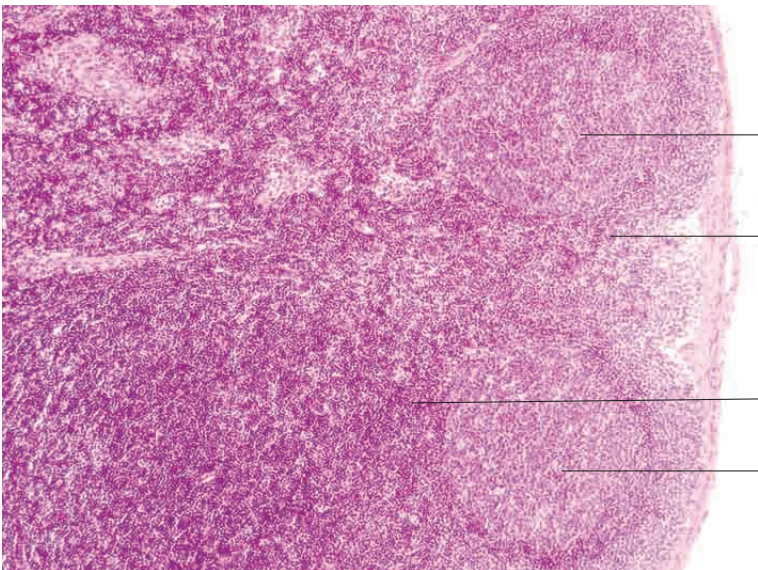
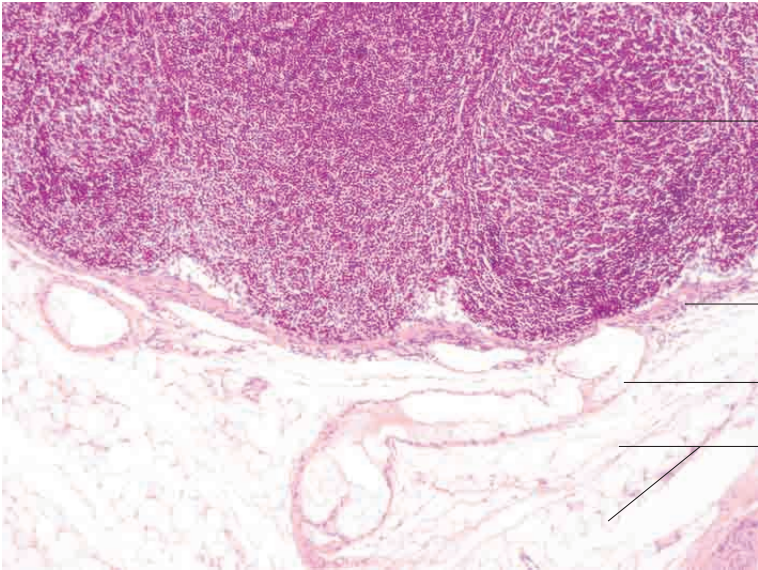
- Loose connective tissue
- Capsule
- Reticular cell
- Subcapsular sinus
- Free lymphocytes in lymph
- Cortex

Lymph node, dog. H.E. stain; x800.

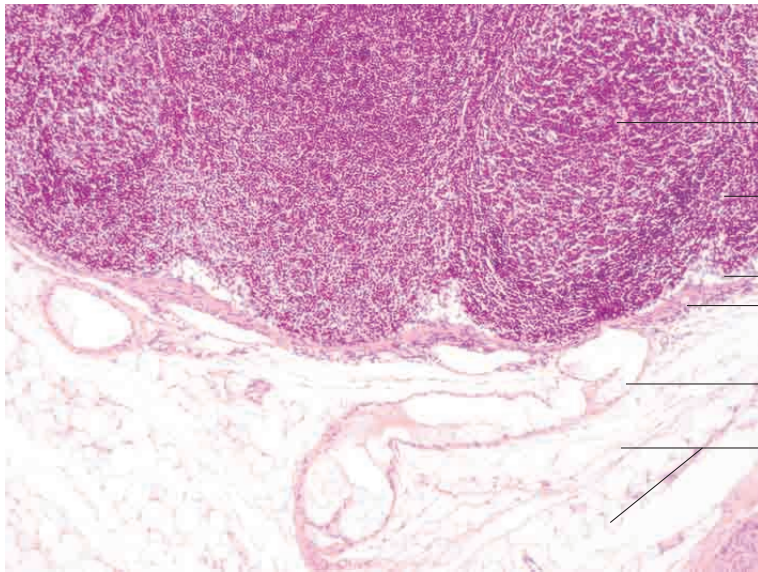


8 Lymphatic organs

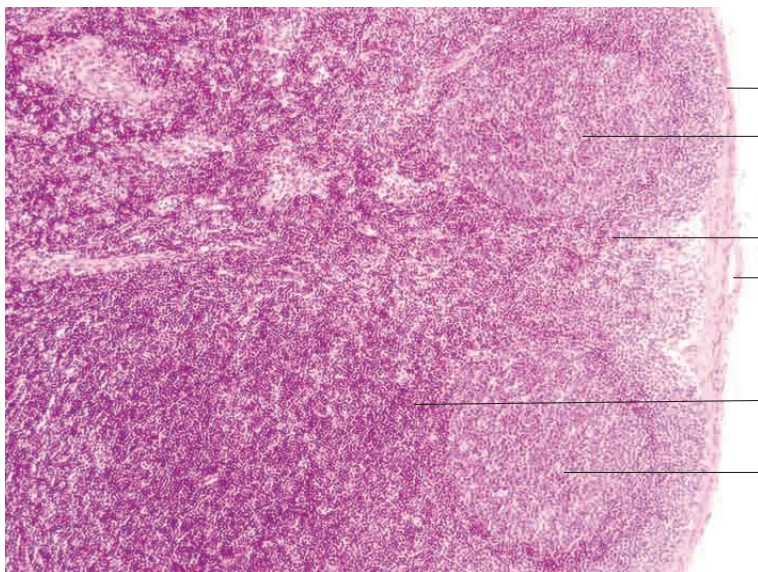
---



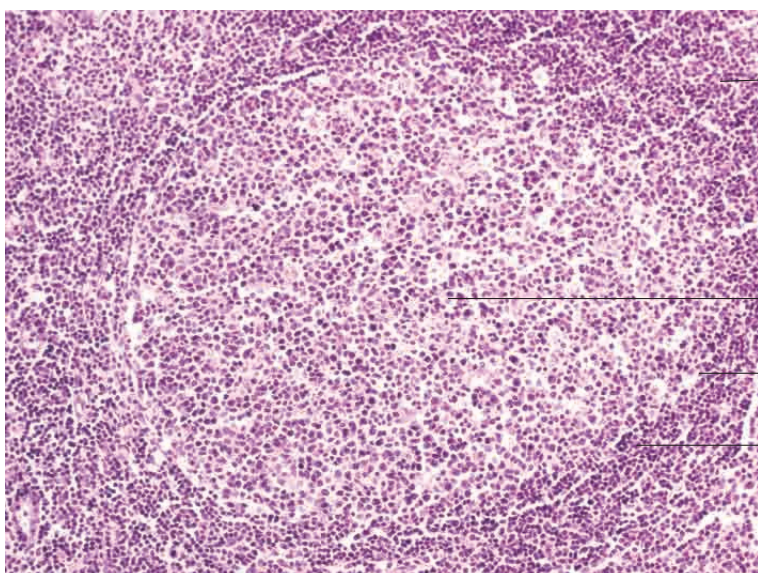




- Lymphoid follicle
  - Parafollicular (thymus dependent) zone
  - Subcapsular sinus
  - Capsule
  - Afferent lymph vessel with valve
  - Loose connective tissue with unilocular adipose tissue
- Lymph node, dog. H.E. stain; x100.



- Capsule
  - Lymphoid follicle
  - Cortical sinus
  - Afferent lymph vessel
  - Parafollicular (thymus dependent) zone
  - Lymphoid follicle
- Lymph node, dog. H.E. stain; x100.

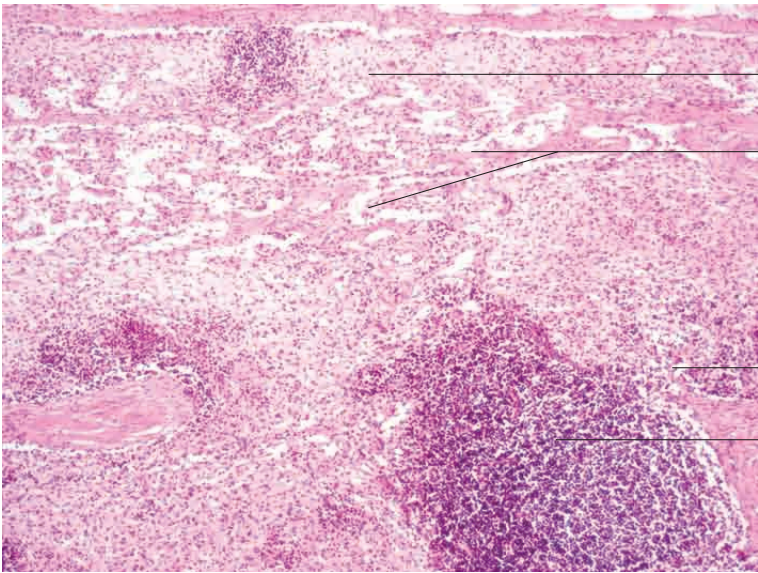
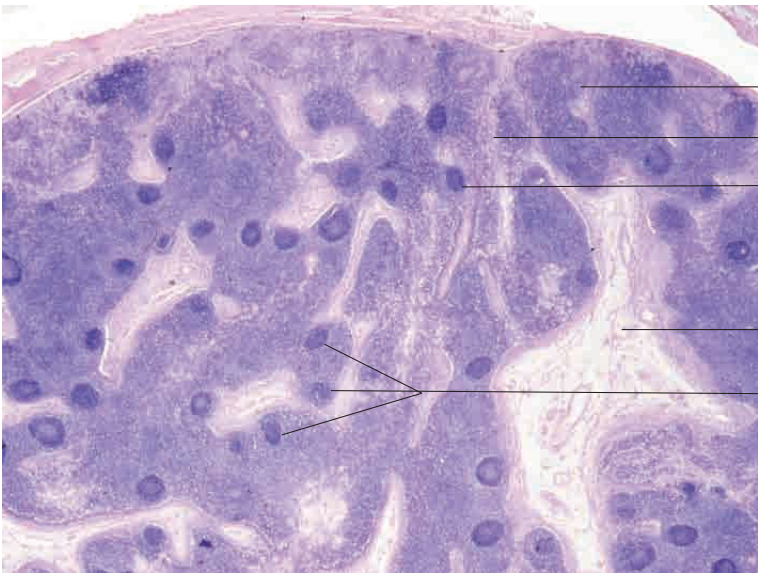


- Parafollicular (thymus dependent) zone
  - Light zone of reaction centre of secondary follicle with plasmablasts, plasma cells, immunoblasts, B cells, macrophages, reticular cells
- Lymph node, cat. H.E. stain; x200.



8 Lymphatic organs

---



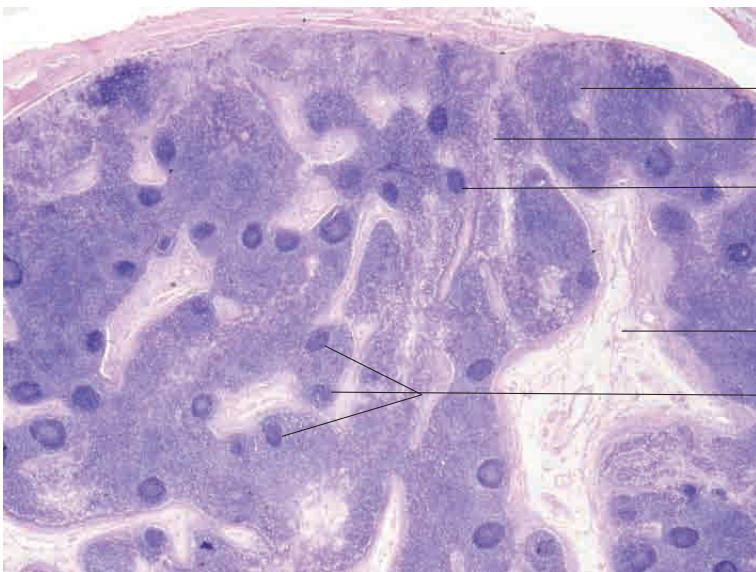


Cortex with individual lymphoid follicles

Medulla with lymphoid follicles

Hilus

Lymph node, pig. H.E. stain; x10.



Cortex with individual lymphoid follicles

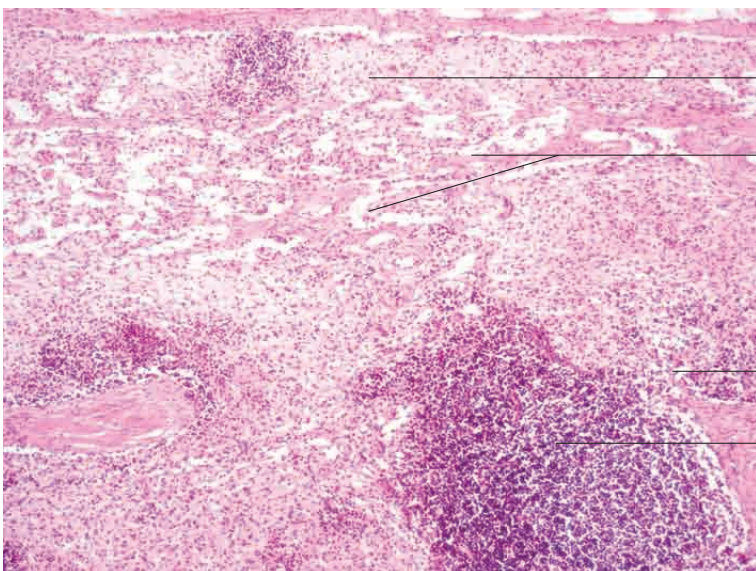
Trabecula with cortical sinus

Lymphoid follicle

Flat-cut section through hilus with vessels

Lymphoid follicle in medulla

Lymph node, pig. H.E. stain; x40.



Capsule

Subcortical sinus

Cortical sinus

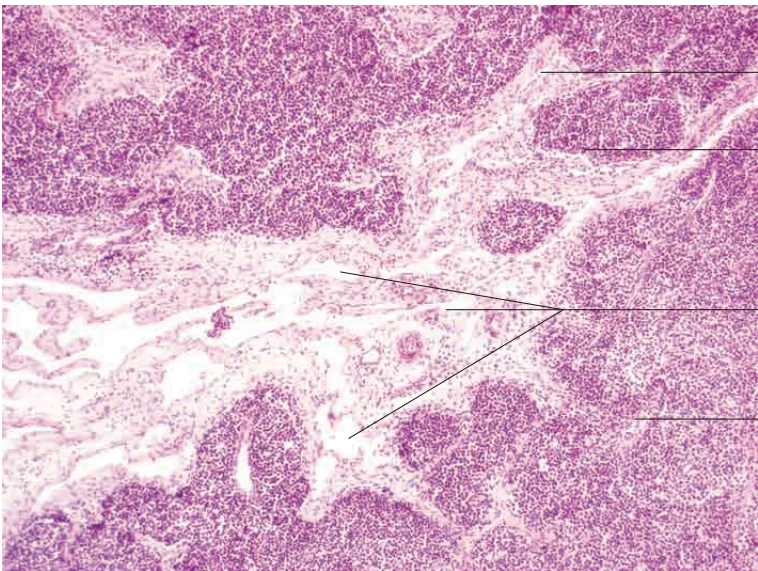
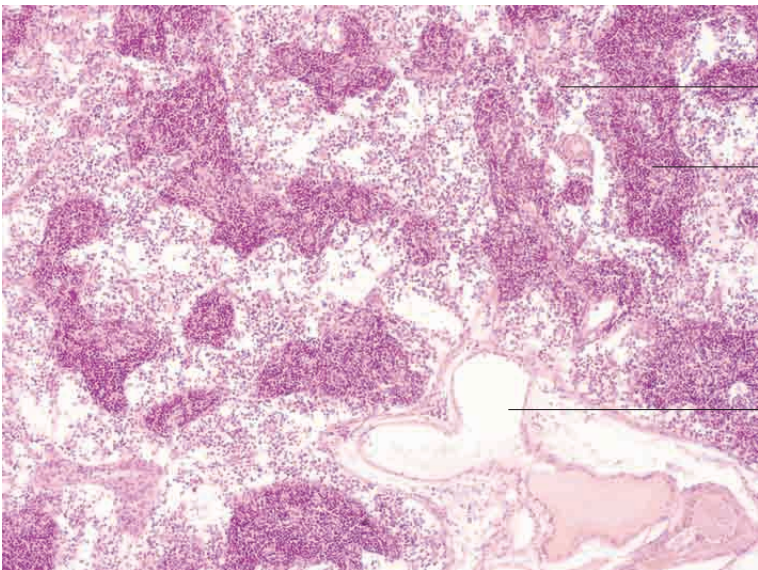
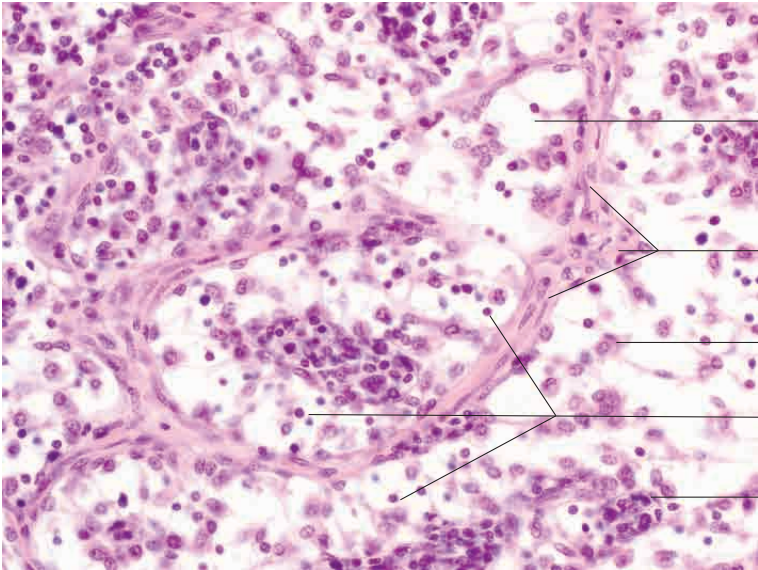
Parafollicular (thymus dependent) zone

Lymph node, pig. H.E. stain; x100.

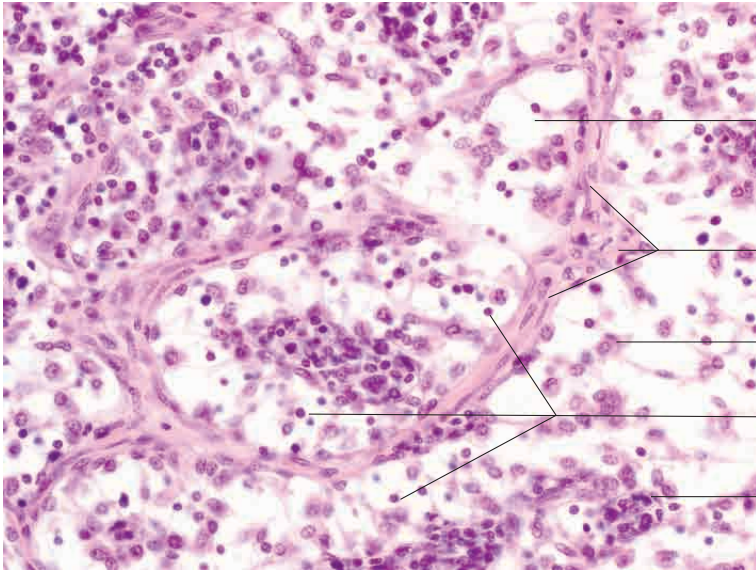


8 Lymphatic organs

---







Lymph-filled space in reticular meshwork

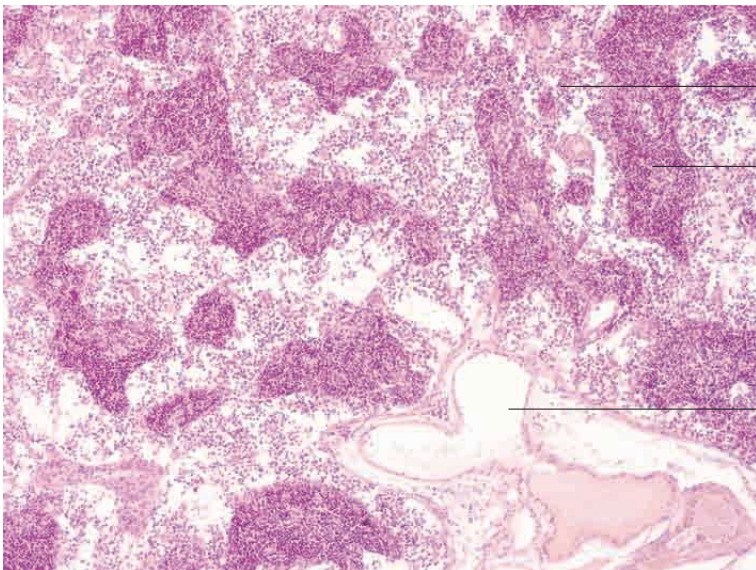
Connective tissue trabecula with fibrocytes and reticular cells

Reticular cell

Free lymphoid cells

Aggregated lymphoid cells

Lymph node, medullary sinus, goat.  
H.E. stain; x400.

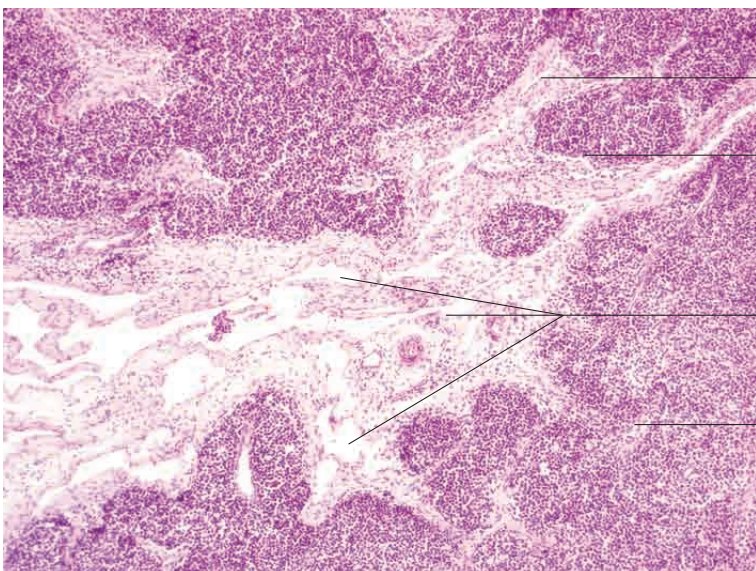


Medulla with loose lymphoreticular tissue

Medulla with dense lymphoreticular tissue

Efferent lymph vessel near hilus

Lymph node, medullary sinus, ox.  
H.E. stain; x100.



Medulla with loose lymphoreticular tissue

Medulla with dense lymphoreticular tissue

Efferent lymph vessel near hilus

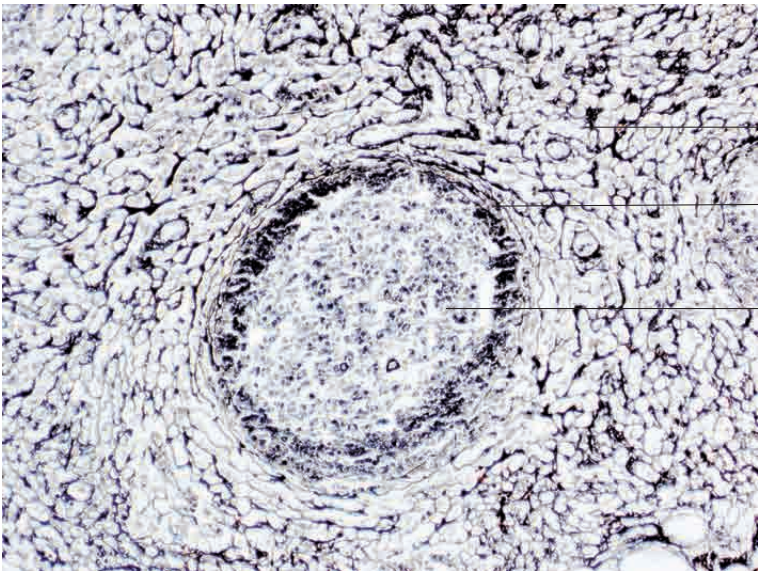
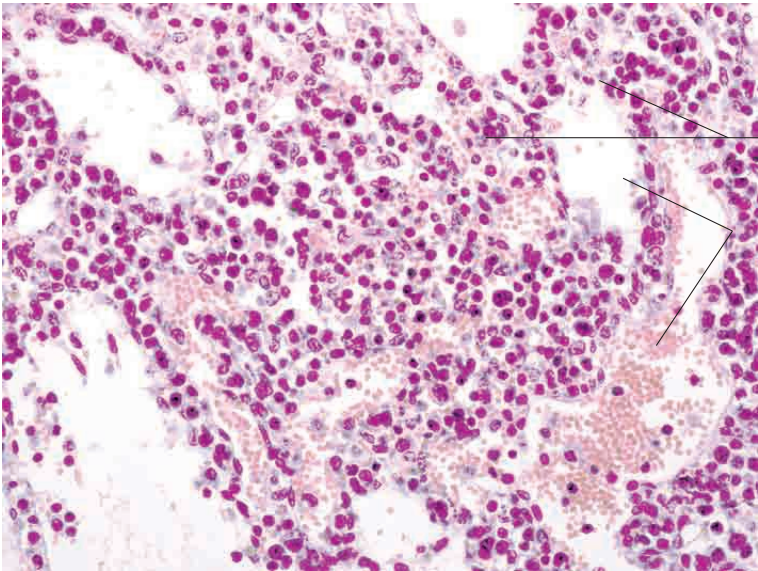
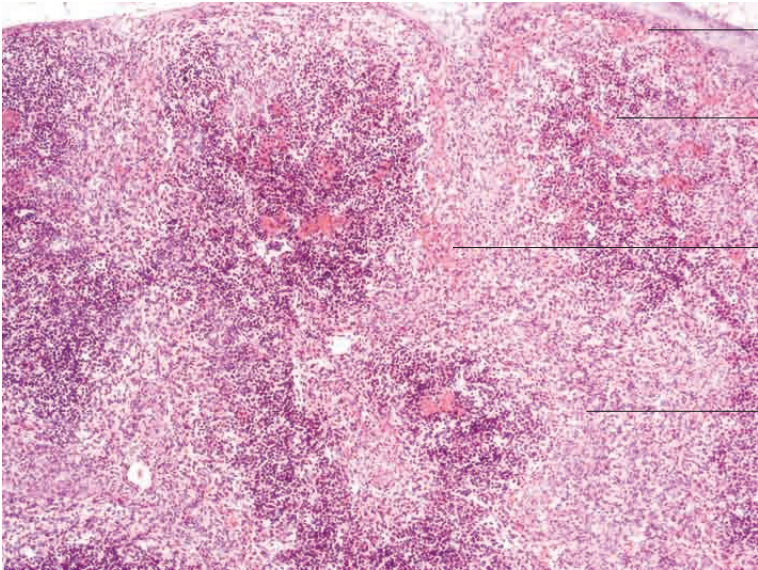
Medulla with dense lymphoreticular tissue

Lymph node, medullary sinus, horse.  
H.E. stain; x100.

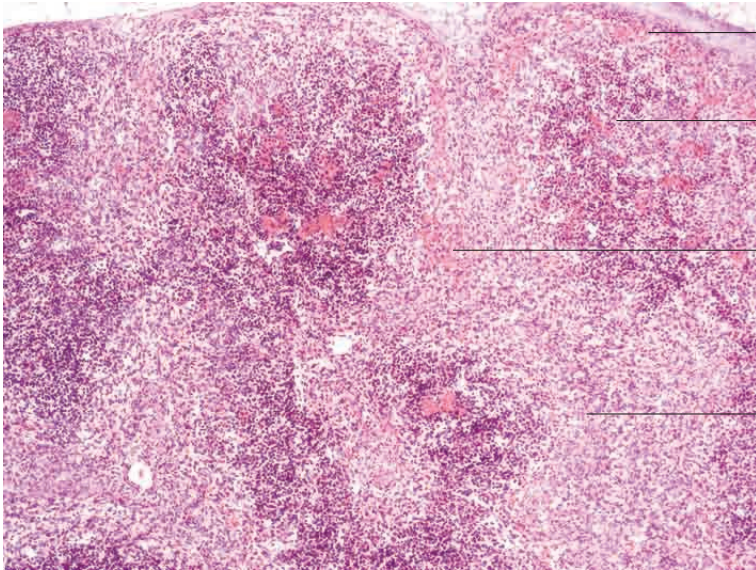


8 Lymphatic organs

---







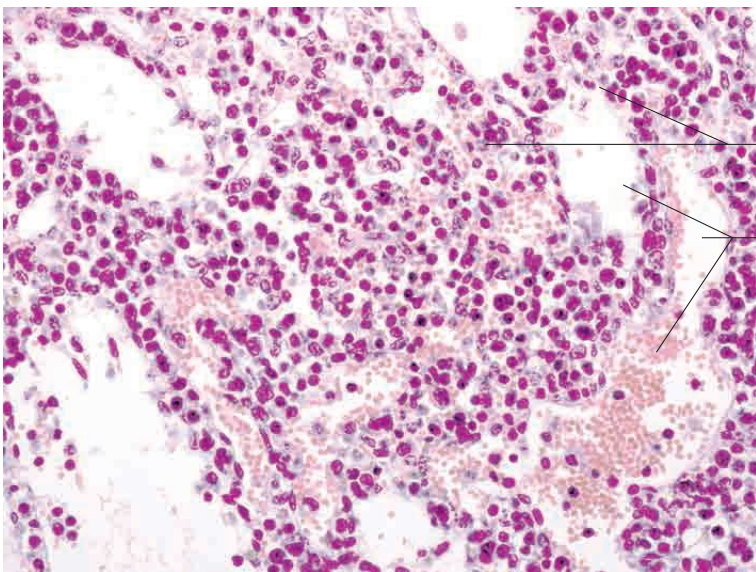
Subcortical sinus with blood-filled spaces

Blood-filled follicle

Cortical sinus with blood-filled spaces

Medulla

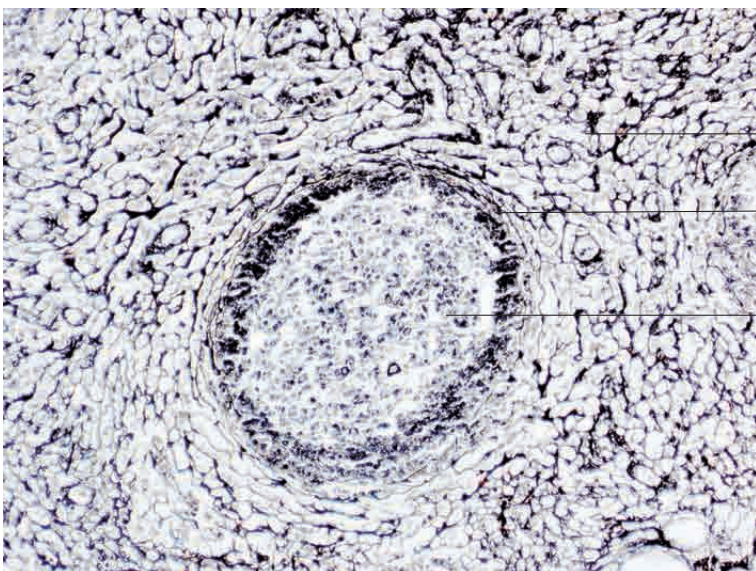
Haemal lymph node, sheep.  
H.E. stain; x100.



Aggregated lymphoid cells

Blood-filled medullary spaces

Haemal lymph node, ox.  
H.E. stain; x400.



Reticular fibres in stroma of lymph node

Reticular fibres in parafollicular zone

Reticular fibres in centre of lymphoid follicle

Lymph node, pig. Reticular fibres stained with  
Bielschowsky silver stain; x200.