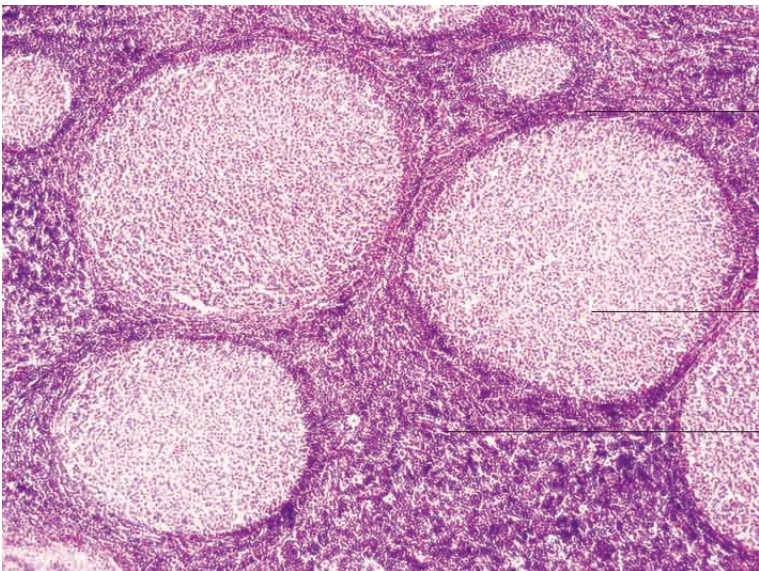
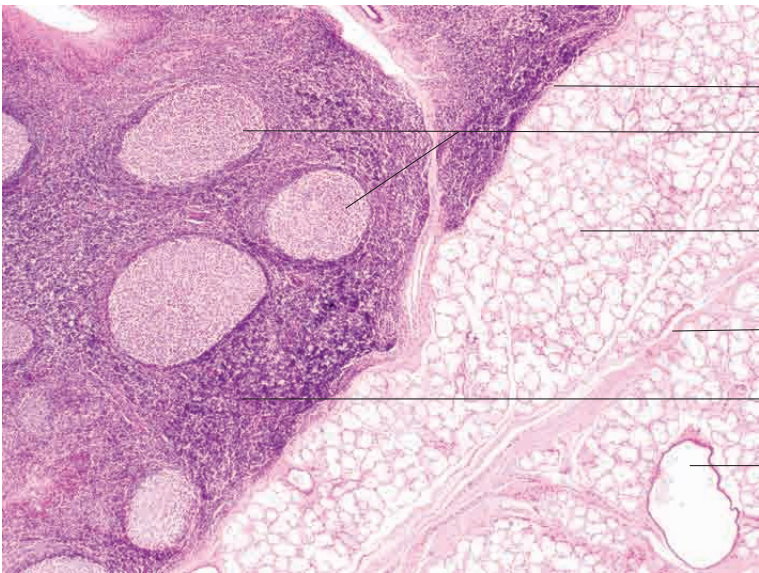
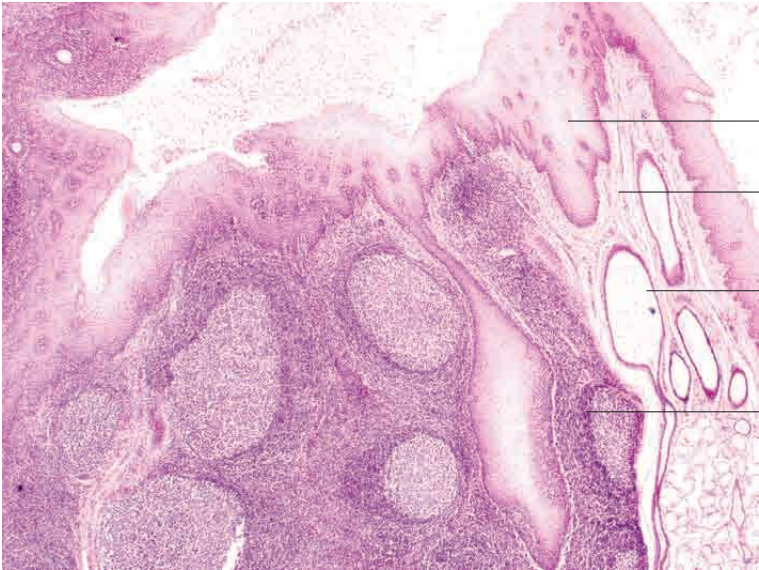
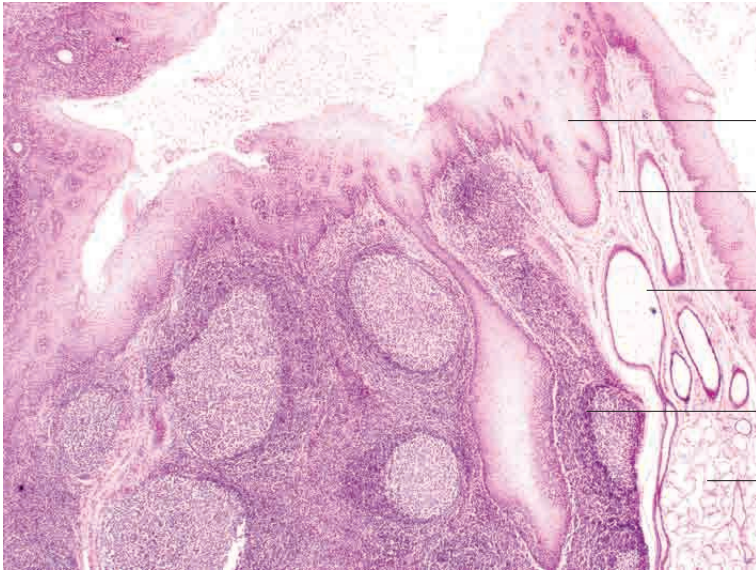


8 Lymphatic organs

---



## Mucosa associated lymphatic tissue and organs (MALT)



Stratified squamous epithelium of oral cavity

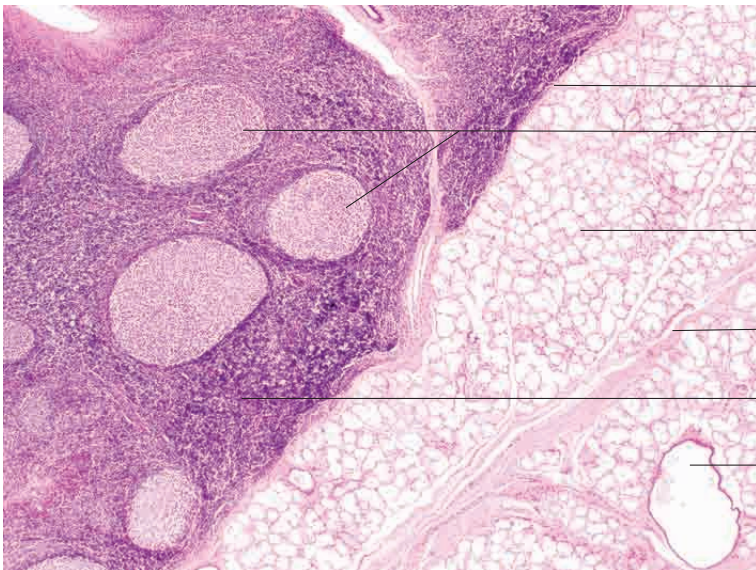
Lamina propria mucosae

Excretory duct of gland with cell detritus

Tonsil

Mucous glands

Palatine tonsil, ox. H.E. stain; x40.



Capsule

Aggregated lymphoid follicles

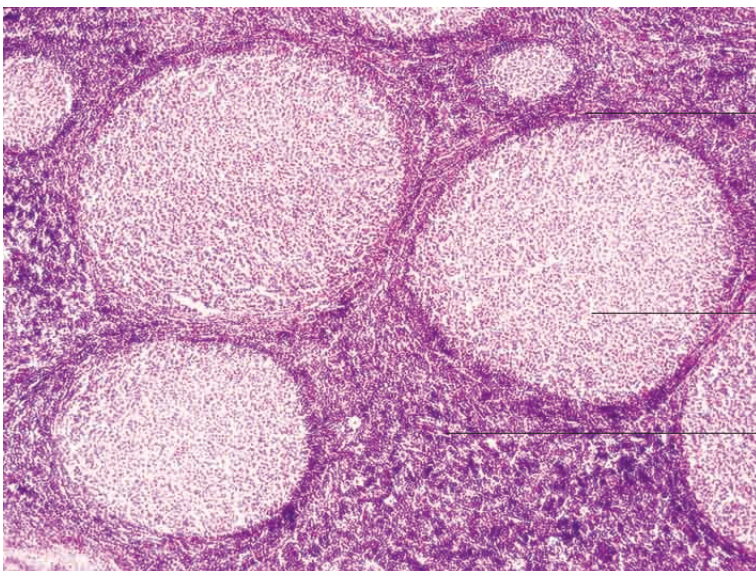
Mucous glands

Interstitial connective tissue

Paracortex of lymphoid follicle

Excretory duct of gland (expanded)

Palatine tonsil, ox. H.E. stain; x40.



Paracortex (thymus dependent zone)

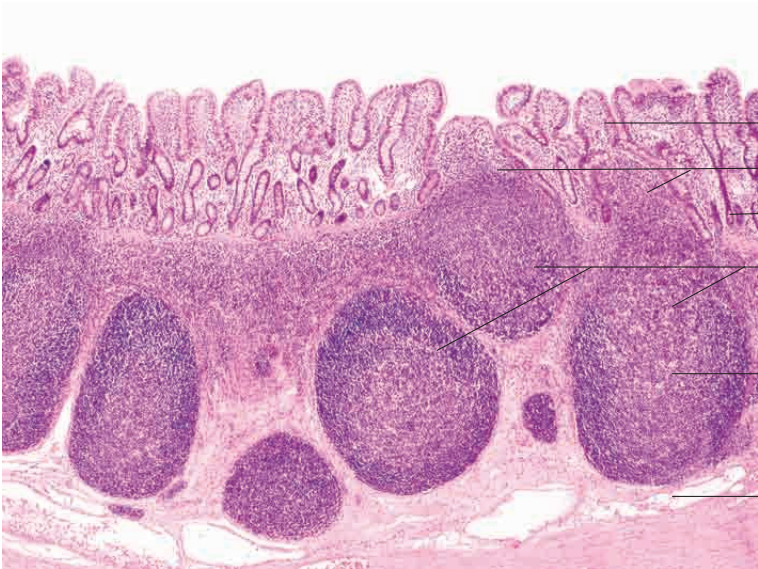
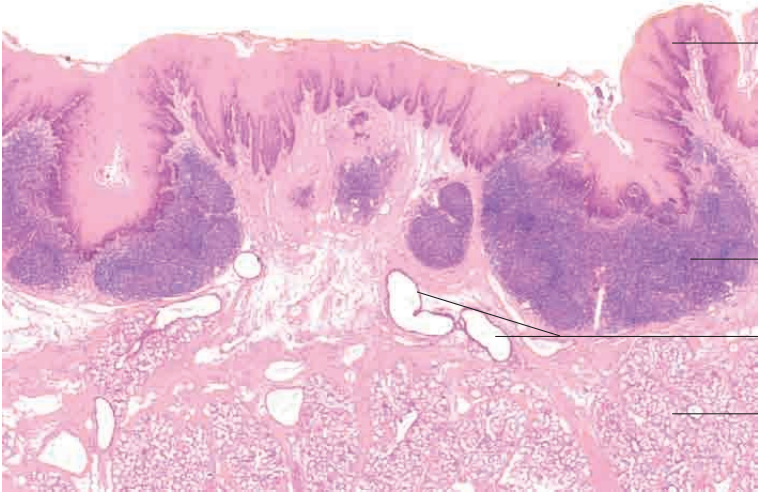
Secondary lymphoid follicle

Dense zone of follicular lymphatic tissue with T cells, plasma cell precursors, immunoblasts and macrophages

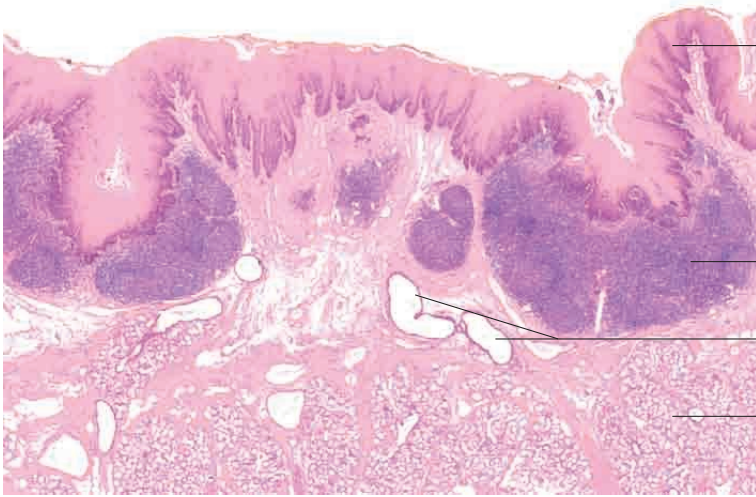
Palatine tonsil, ox. H.E. stain; x100.

8 Lymphatic organs

---



## Mucosa associated lymphatic tissue and organs (MALT))



Stratified squamous epithelium of oral cavity with prominent papillation

Subepithelial aggregates of lymphoid follicles

Excretory ducts of glands

Mucous glands

Tonsil, goat. H.E. stain; x25.



Small intestinal villi (ileum)

Deep intestinal villus

Protruding lymphoid follicle

Peyer's patch

Tela submucosa

Peyer's patches, ileum, dog.  
H.E. stain; x40.



Small intestinal villi (ileum)

Protruding lymphoid follicle

Intestinal glands (glands of Lieberkühn)

Peyer's patches

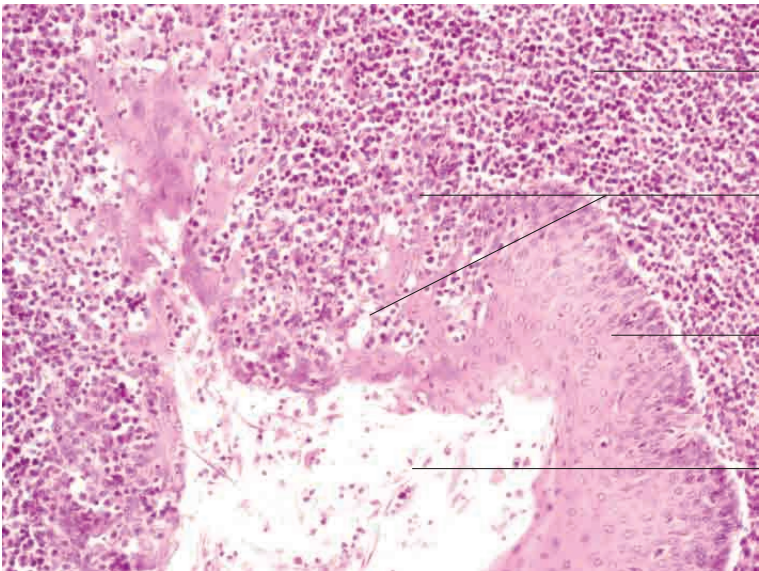
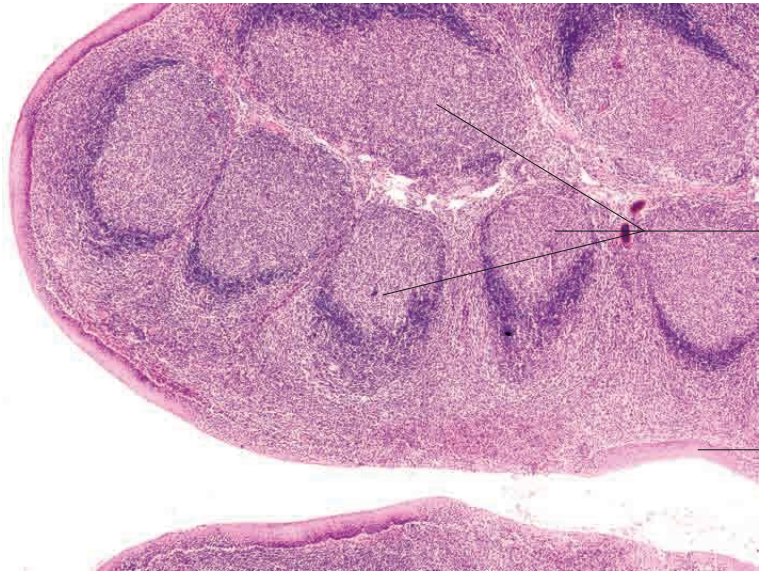
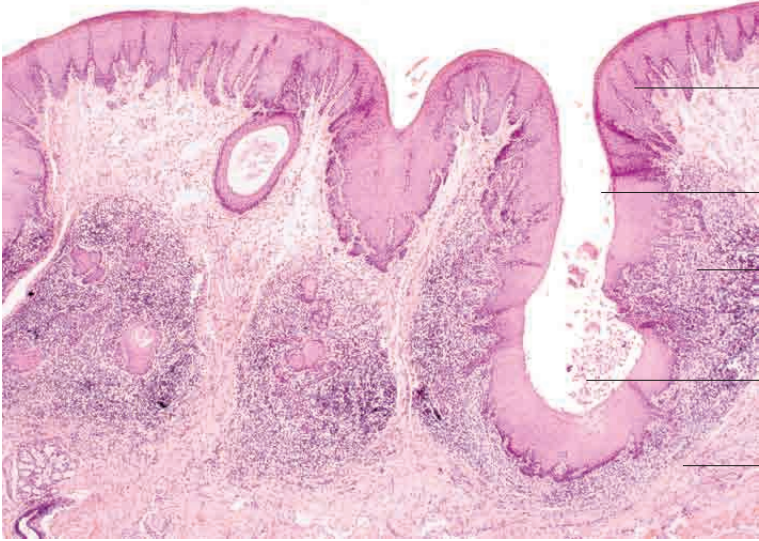
Reaction centre in lymphoid follicle

Tela submucosa

Peyer's patches, ileum. pig.  
H.E. stain; x40.

8 Lymphatic organs

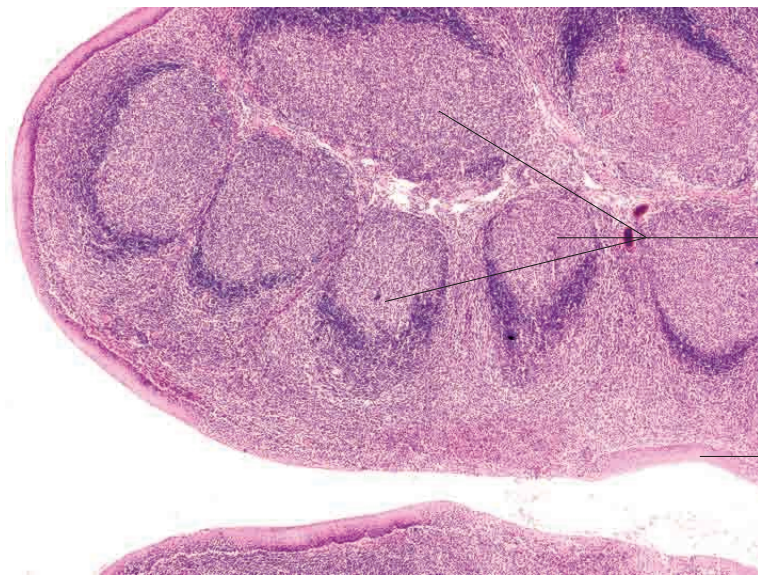
---



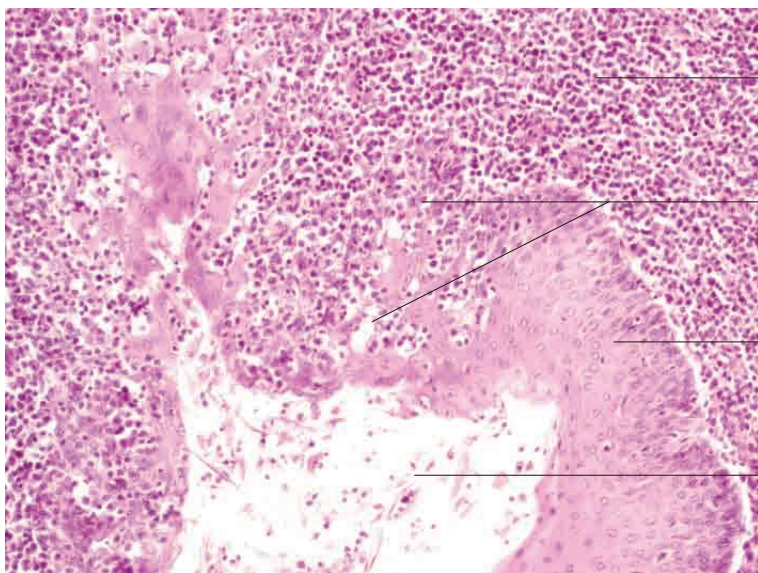
# Mucosa associated lymphatic tissue and organs (MALT))



- Stratified squamous epithelium with prominent papillation
  - Fossula tonsillaris
  - Solitary subepithelial lymphoid follicle
  - Desquamating epithelial cell and secretion
  - Capsule
- Lingual tonsil, goat.  
H.E. stain; x40.



- Aggregated lymphoid follicles
  - Stratified squamous epithelium
- Lingual tonsil, dog. H.E. stain; x40.



- Massive lymphoid cell infiltrate in lymphoid follicle
  - Lymphoid cells infiltrating stratified squamous epithelium
  - Stratified squamous epithelium
  - Fossula tonsillaris with cell detritus
- Lingual tonsil, dog.  
H.E. stain; x200.