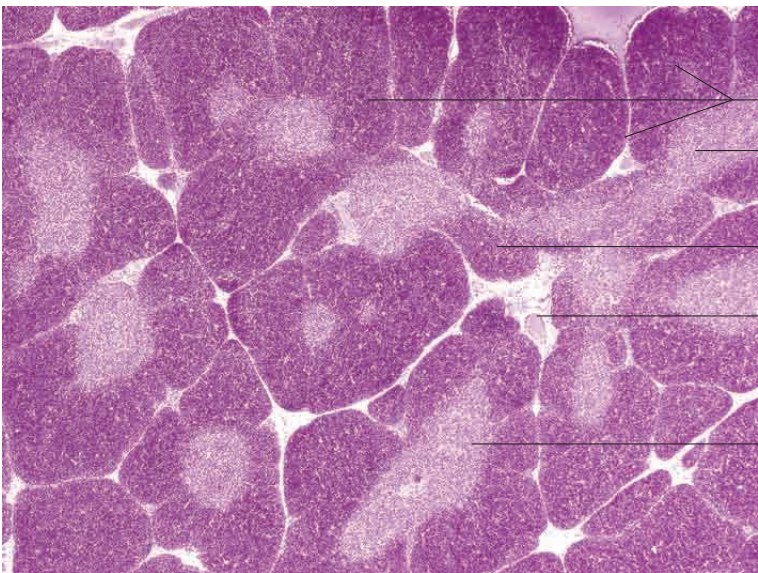
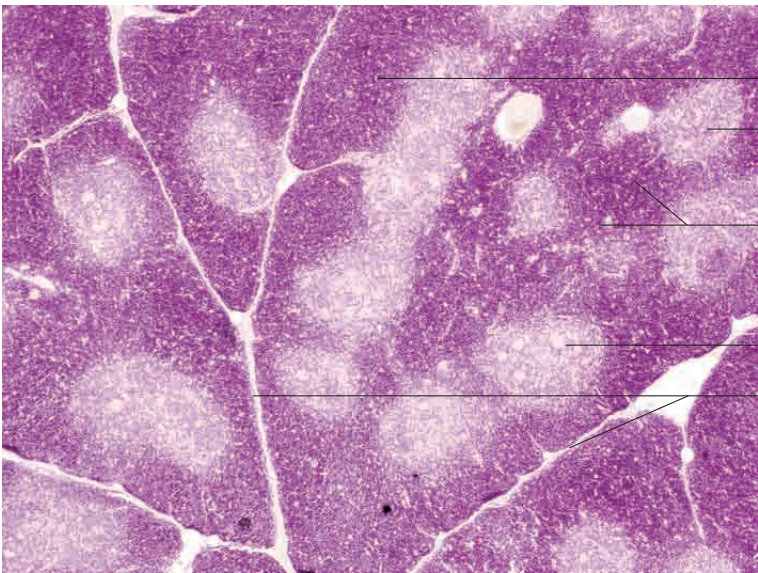
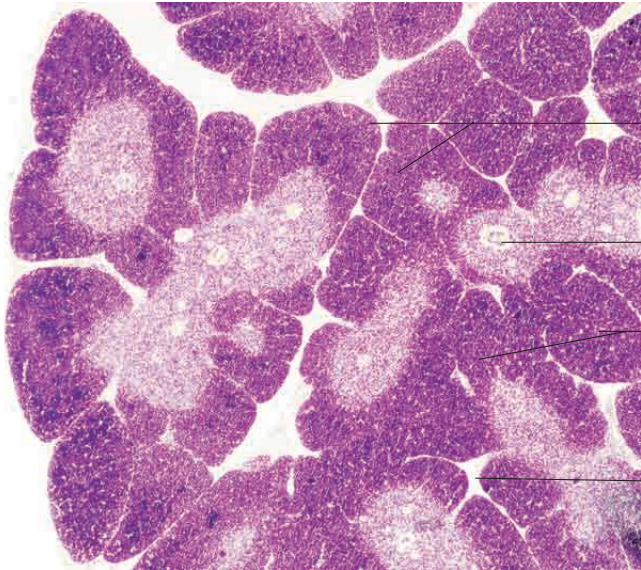
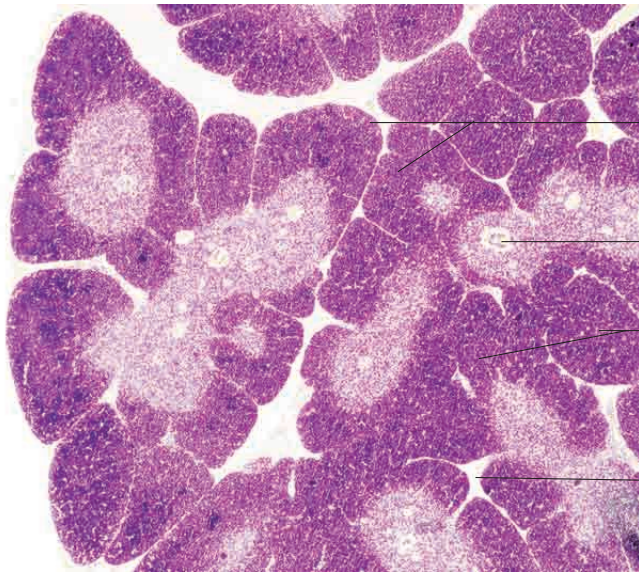


8 Lymphatic organs

---







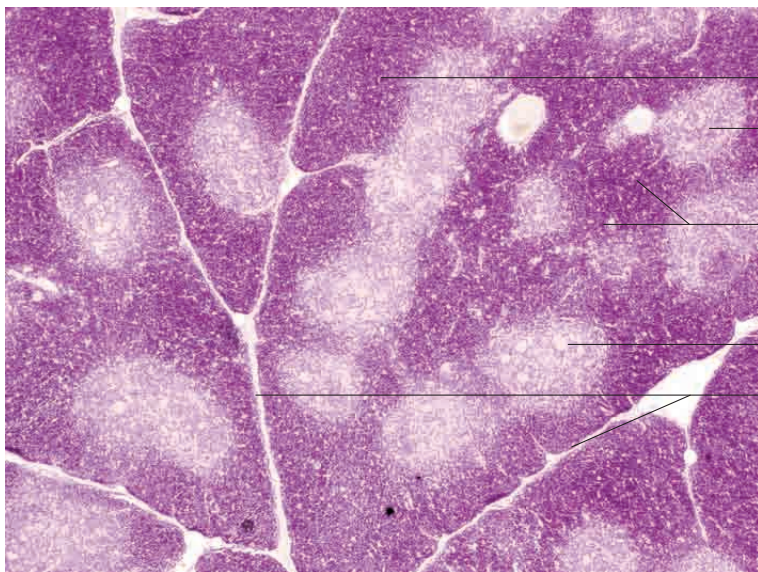
Cortex

Medulla

Flat-cut section of cortex

Interlobular connective tissue

Thymus, cat. H.E. stain; x40.



Cortex

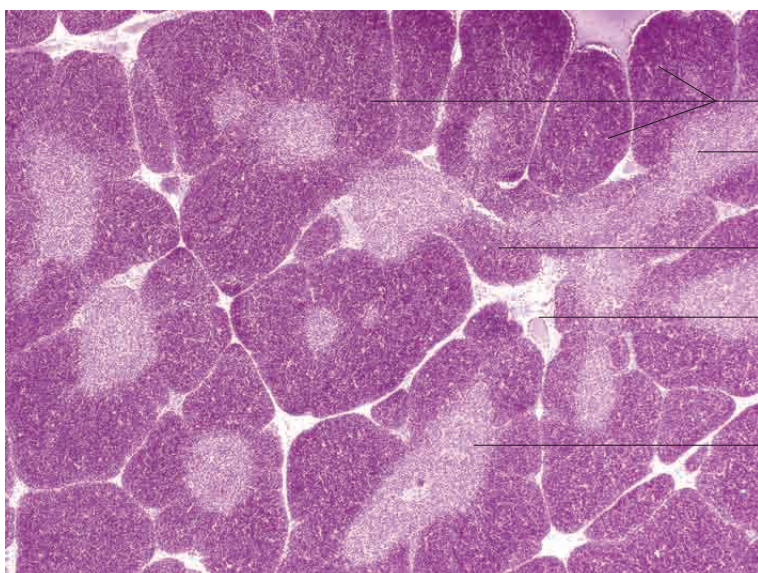
Medulla

Flat-cut section of cortex

Medulla with Hassall's corpuscles

Interlobular connective tissue

Thymus, dog. H.E. stain; x40.



Cortex

Medulla

Flat-cut section of cortex

Interlobular connective tissue

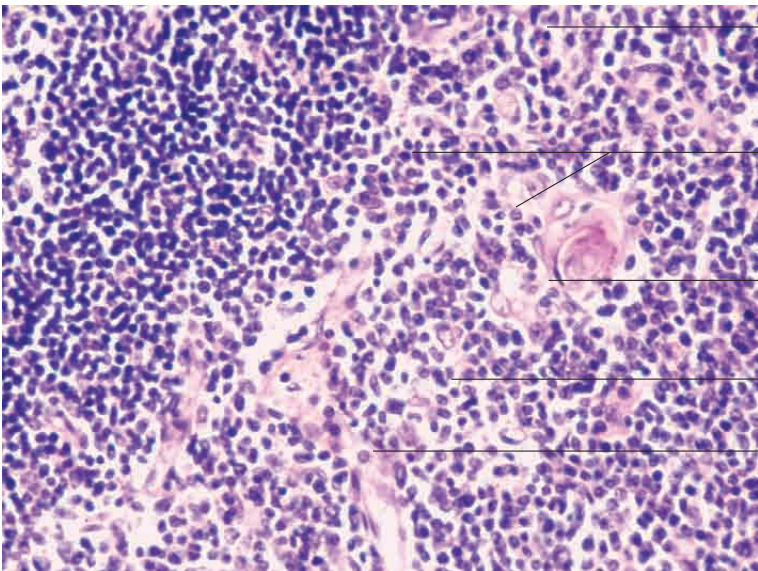
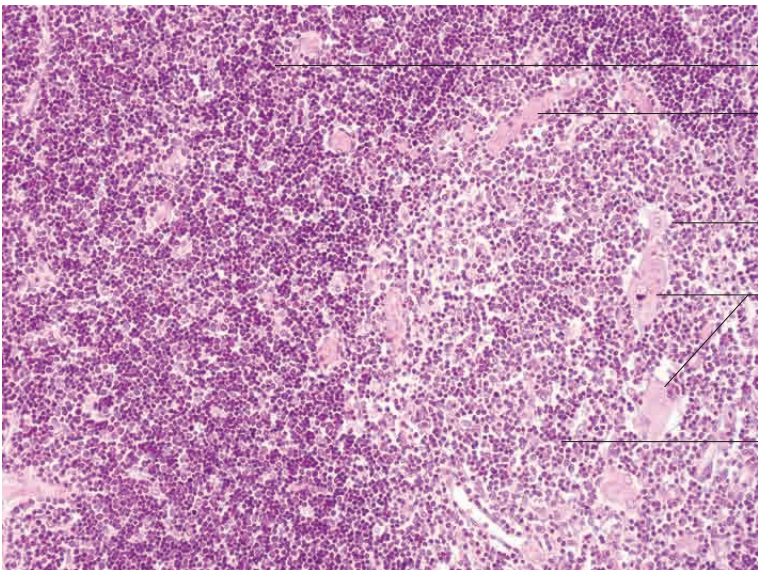
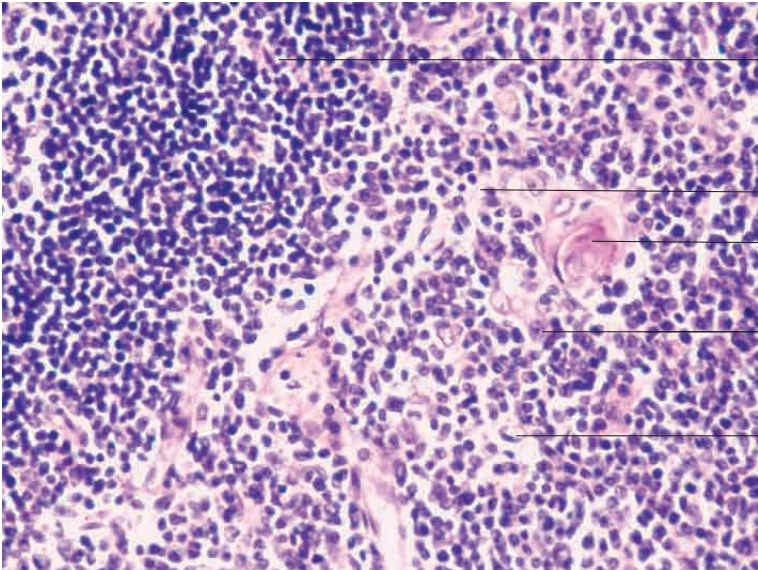
Medulla with Hassall's corpuscles

Thymus, calf. H.E. stain; x40.

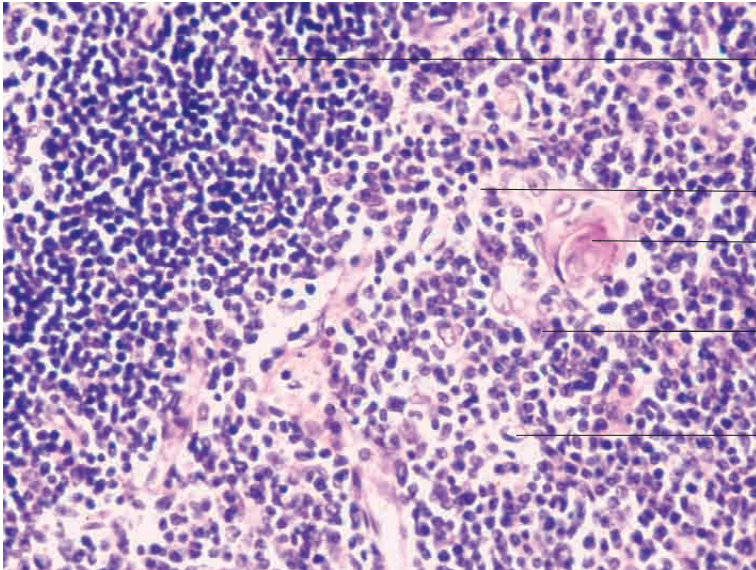


8 Lymphatic organs

---







Cortex with T cells, epithelial and mesodermal reticular cells

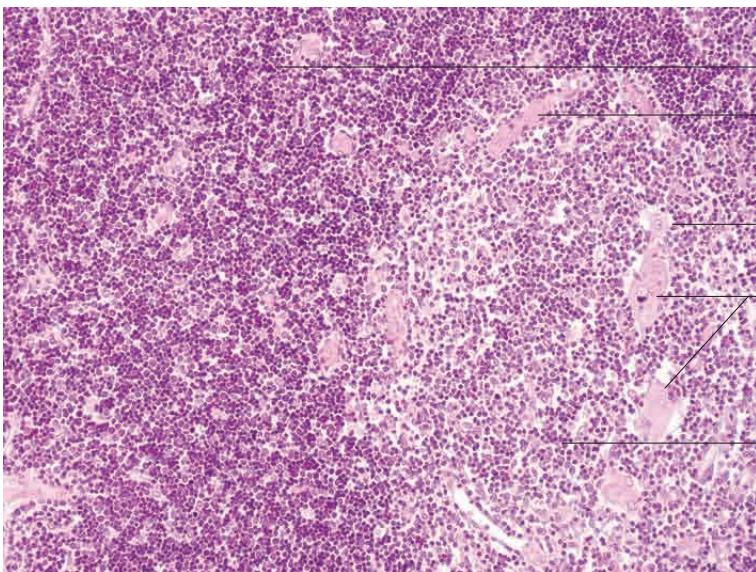
Medulla

Hassall's corpuscle

Reticular cell and immunocompetent T lymphocytes

Capillary

Thymus, dog. H.E. stain; x440.



Cortex

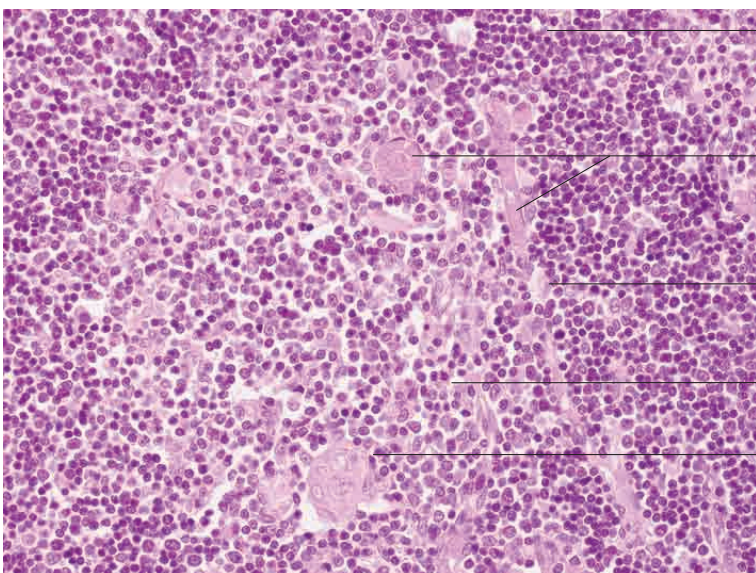
Blood-filled capillary

Reticular cell in medulla

Hassall's corpuscle

Immunocompetent T lymphocytes

Thymus, dog. H.E. stain; x200.



Cortex

Vessels

Reticular cells

Immunocompetent T lymphocytes

Hassall's corpuscle

Thymus, dog. H.E. stain; x400.