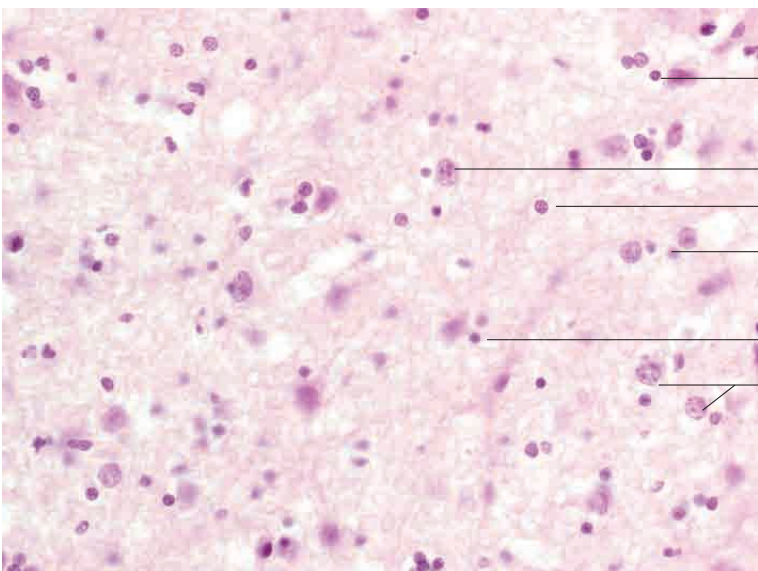
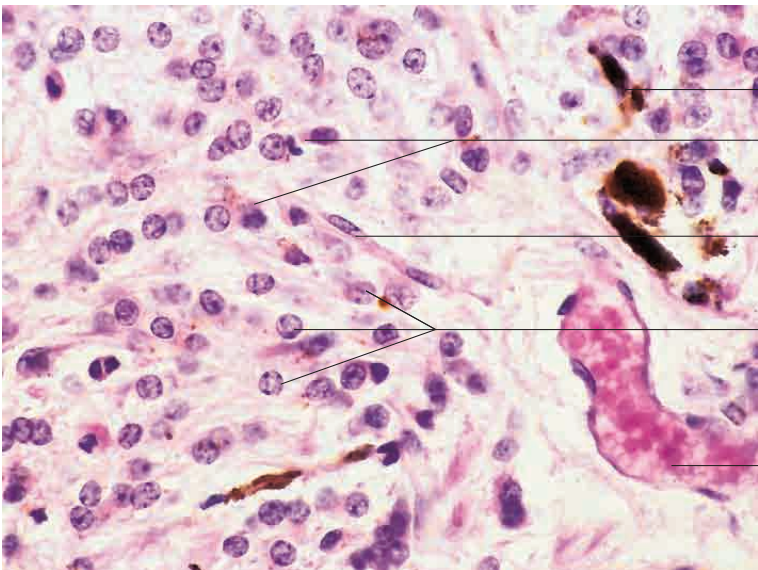
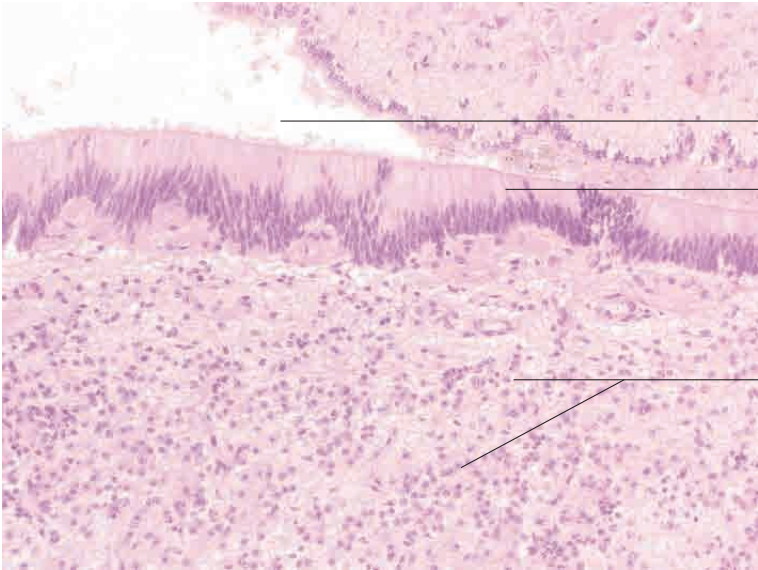
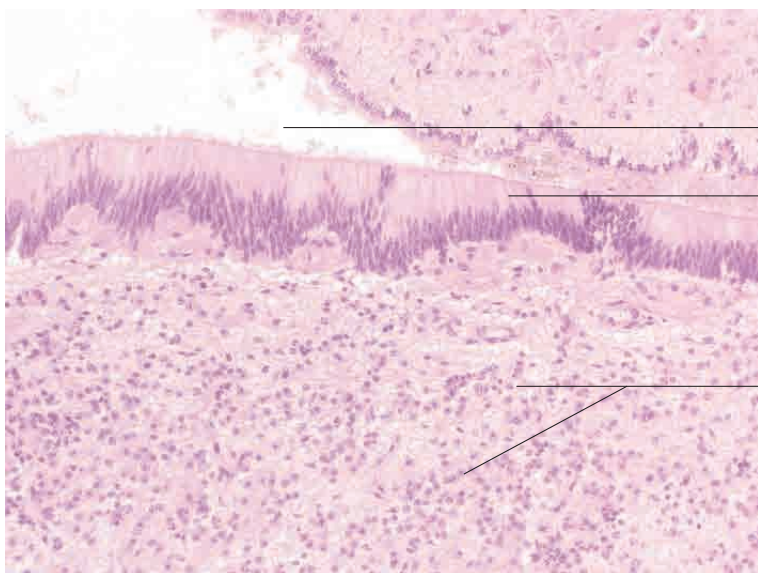


9 Endocrine system





3rd ventricle containing cerebrospinal fluid

Ependymal cells, cuboidal to columnar epithelium

Epiphyseal parenchyma with pineal cells, interstitial cells (astrocytes), sympathetic nerve fibres and nerve cells

Epiphysis, dog. H.E. stain; x100.



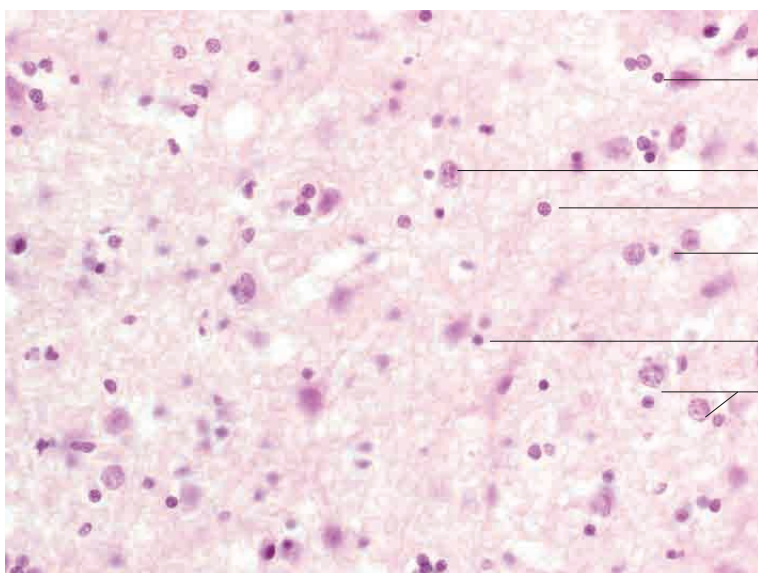
Corpora aranacea (brain sand)

Interstitial cells (astrocytes, pineal glial cells)

Fibrocyte

Pinealocytes

Epiphysis, dog. H.E. stain; x480.



Interstitial cell (astrocyte, pineal glial cell)

Nerve cell

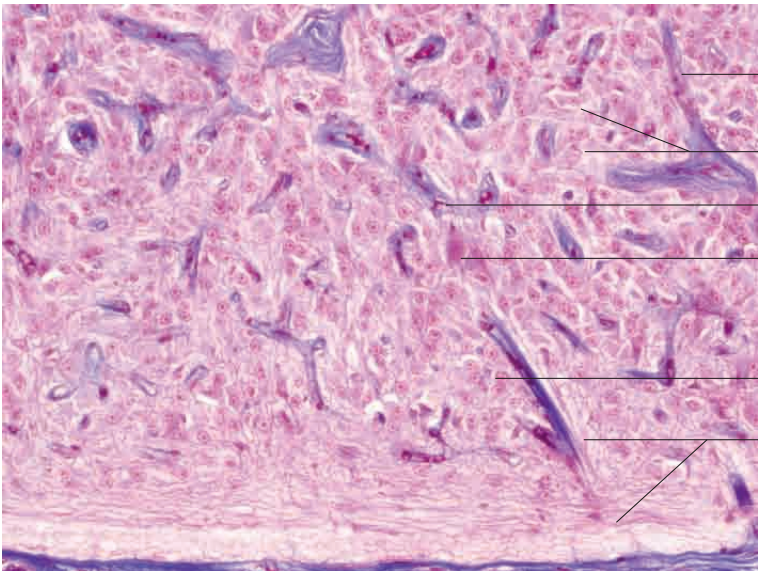
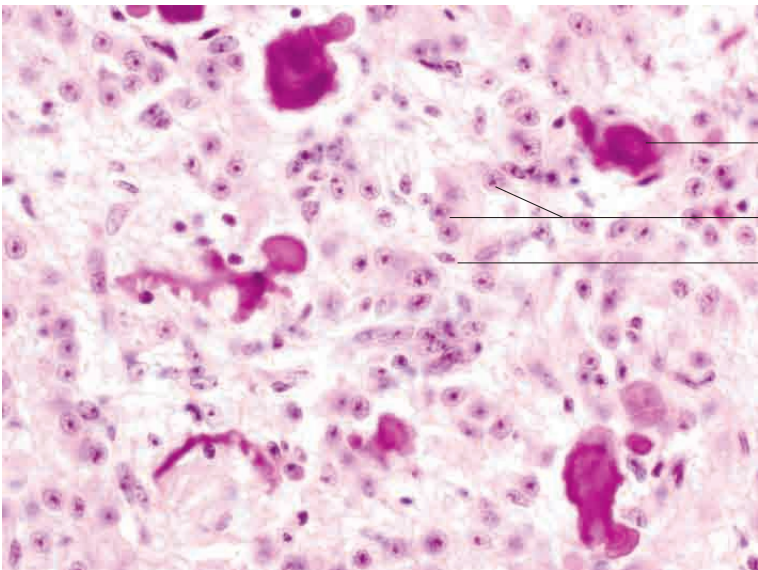
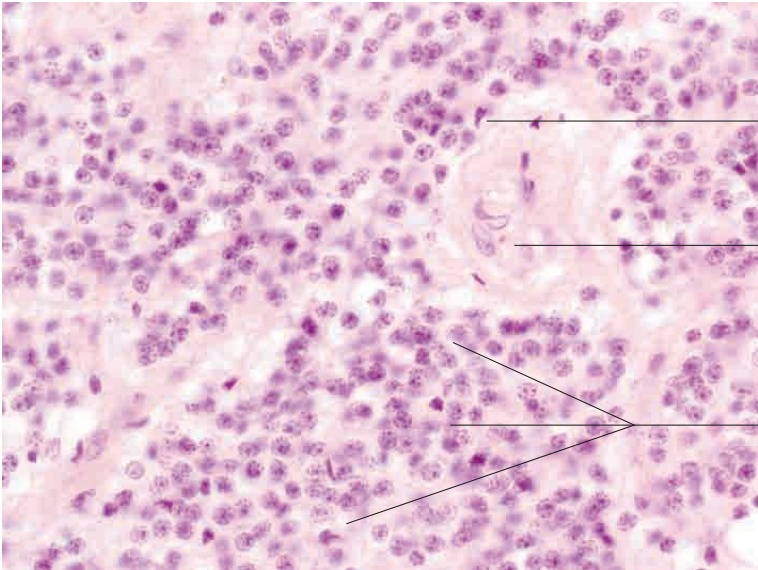
Pineal cell

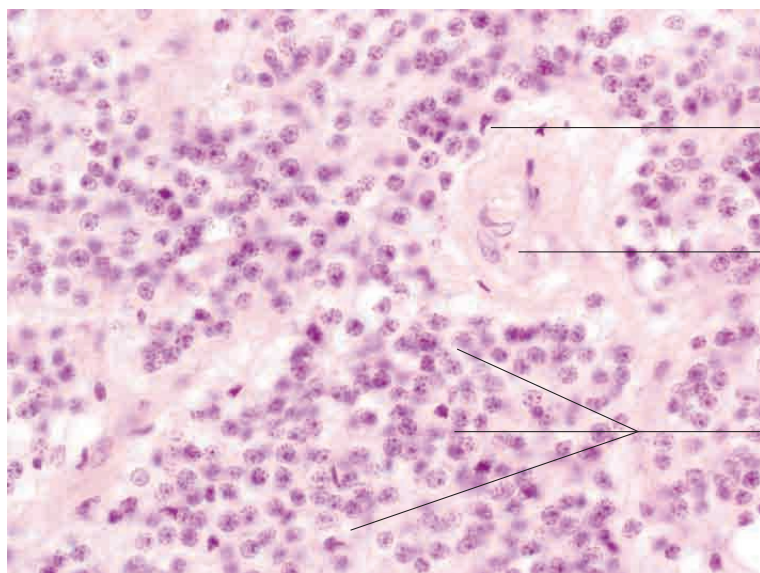
Pinealocyte

Interstitial cell (astrocyte, pineal glial cell)
Nerve cells

Epiphysis, dog. H.E. stain; x400.

9 Endocrine system



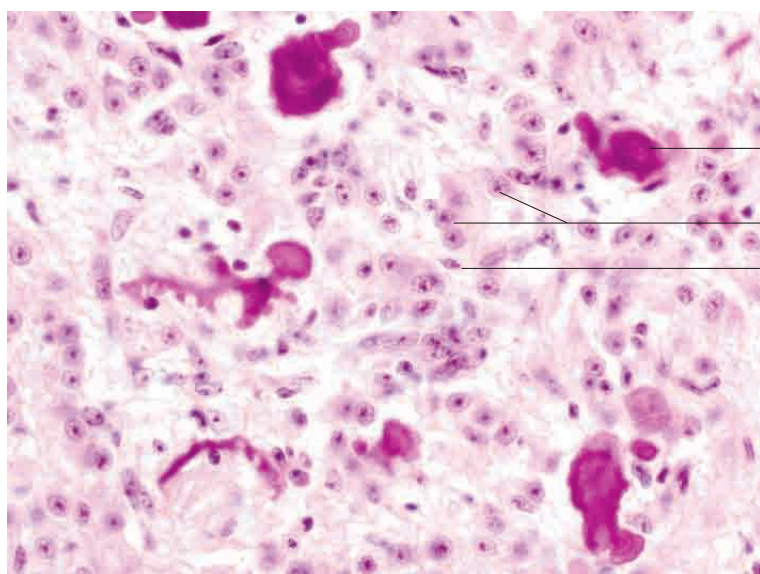


Interstitial cell in contact with pinealocytes, capillaries and pineal channel system

Vessel

Pineal cells

Epiphysis, cat; H.E. stain; x400.

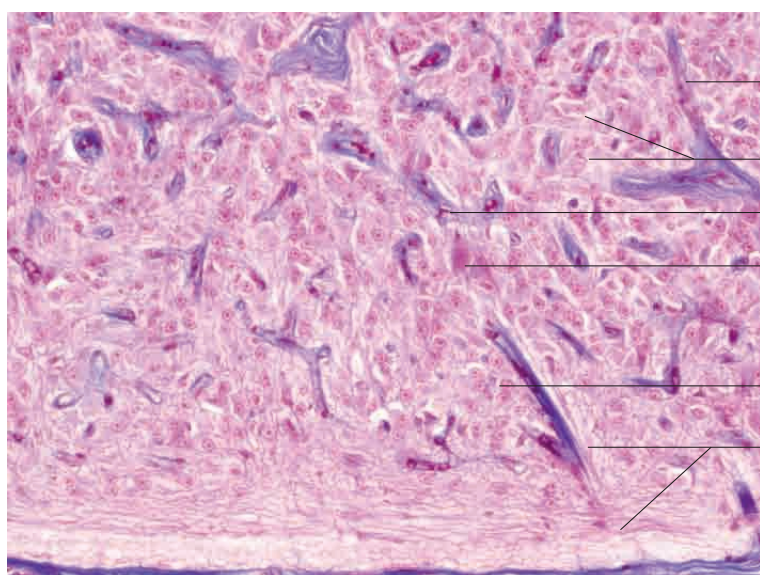


Corpora araneacea

Pinealocytes

Interstitial cell (astrocyte, pineal glial cell)

Epiphysis, ox. H.E. stain; x400.



Connective tissue septa with limited lobulation

Pinealocytes

Connective tissue septa

Nerve cells

Interstitial cells

Nerve fibre bundles (non-myelinated postganglionic, myelinated sympathetic)

Epiphysis, ox. Azan stain; x200.