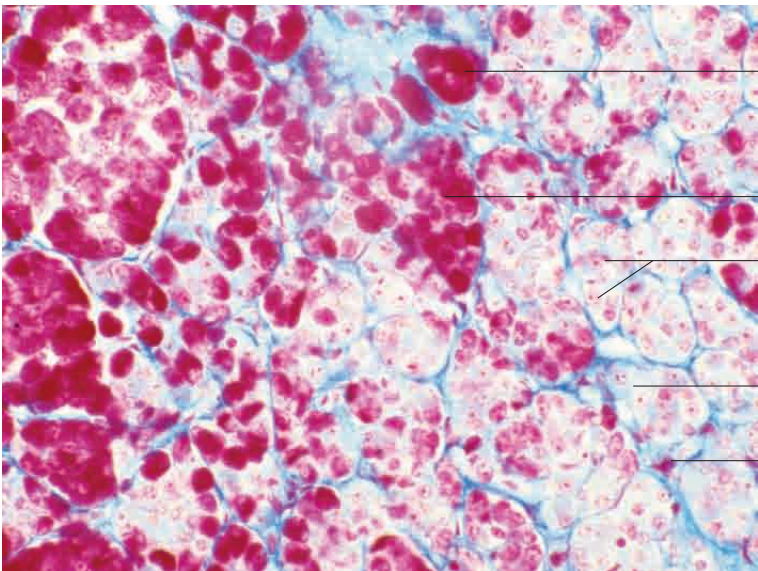
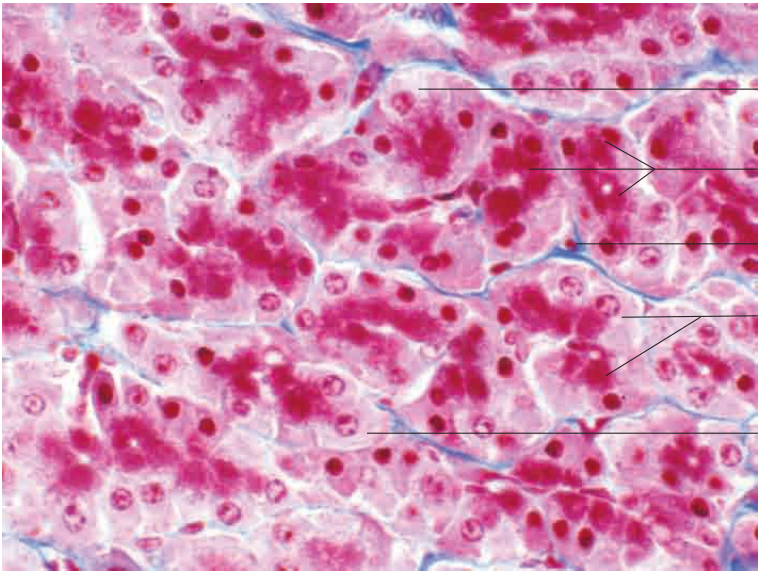
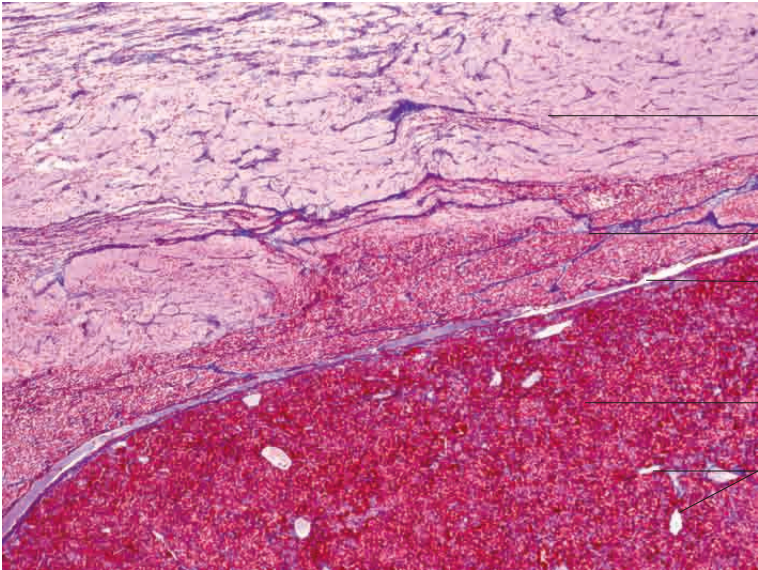
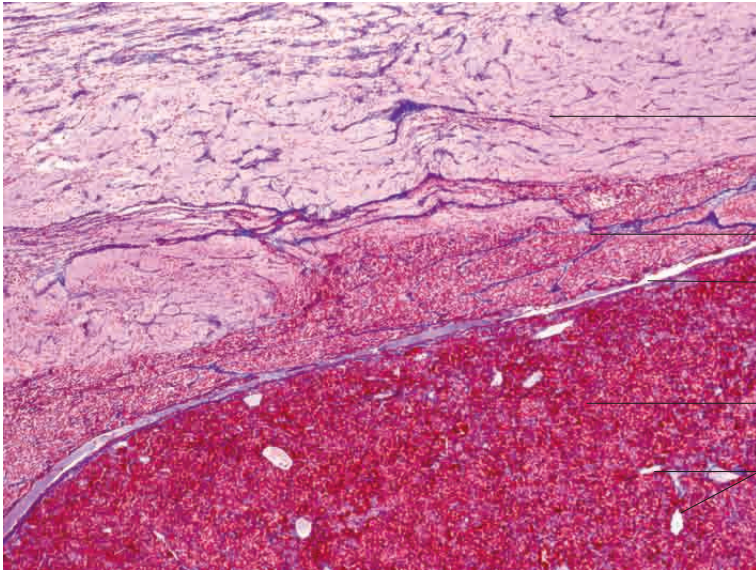


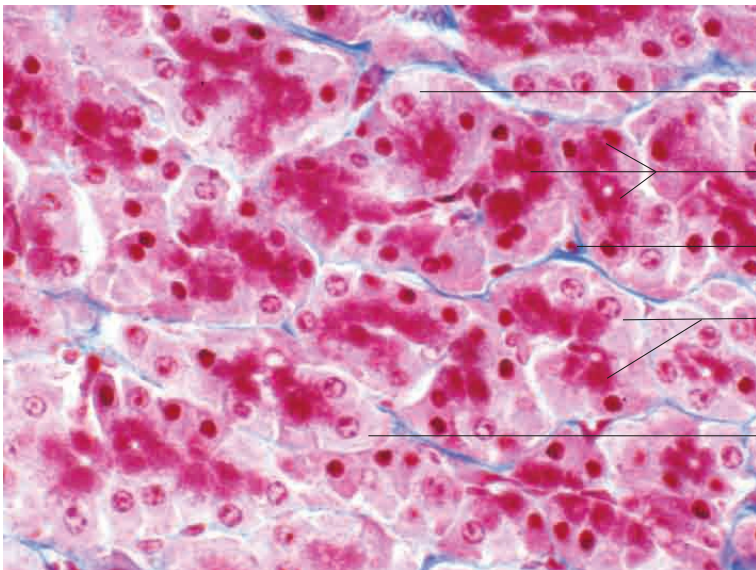
9 Endocrine system





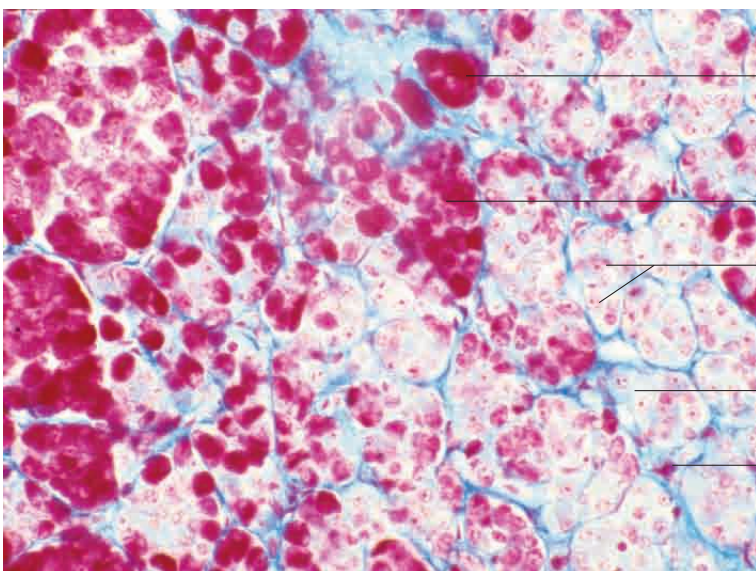
- Neurohypophysis
- Pars intermedia
- Hypophyseal cavity
- Adenohypophysis

Hypophysis, ox. Azan stain; x40.



- Chromophobic cell
- Chromophilic, acidophilic cells
- Capillary in connective tissue
- Chromophilic, acidophilic cells
- Chromophobic cell

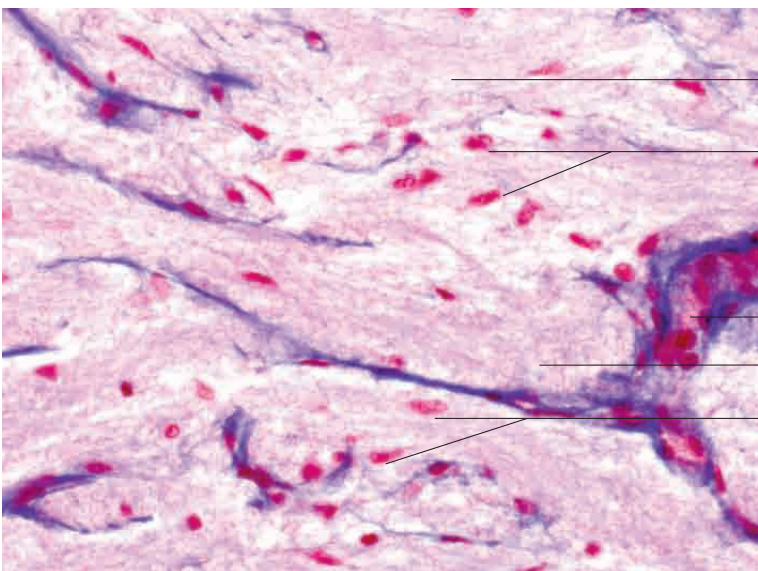
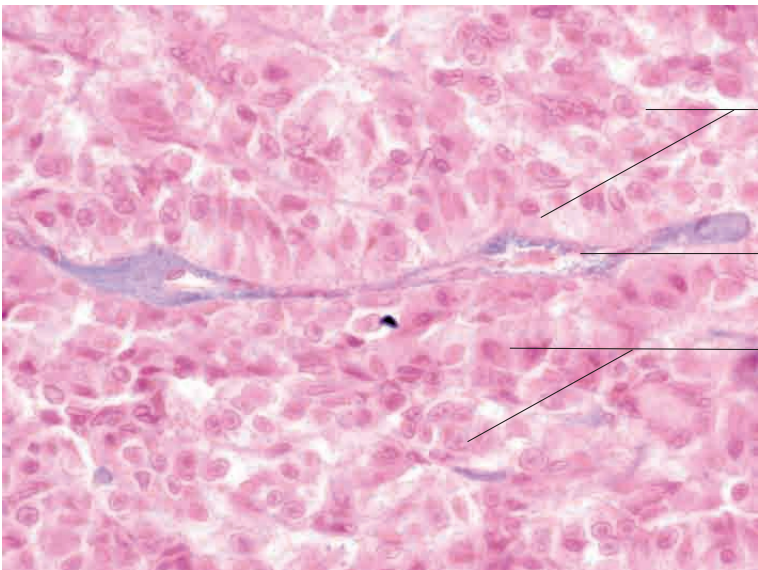
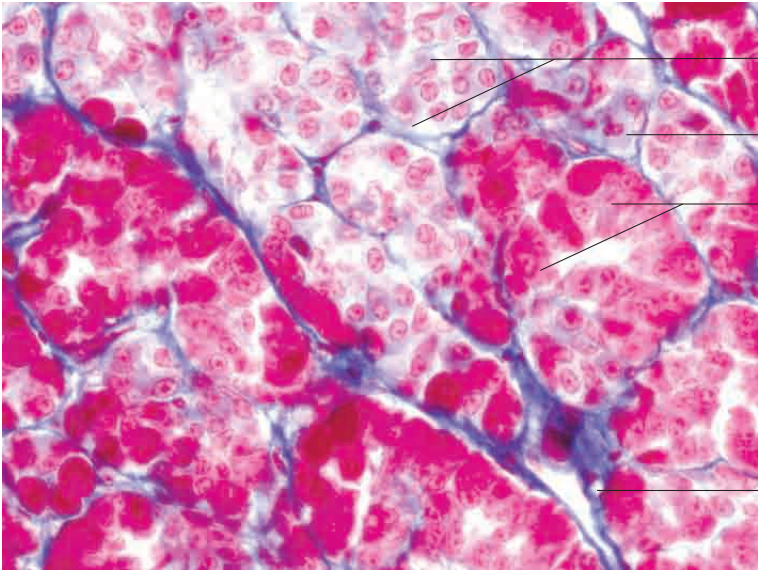
Hypophysis, ox. Azan; x100.

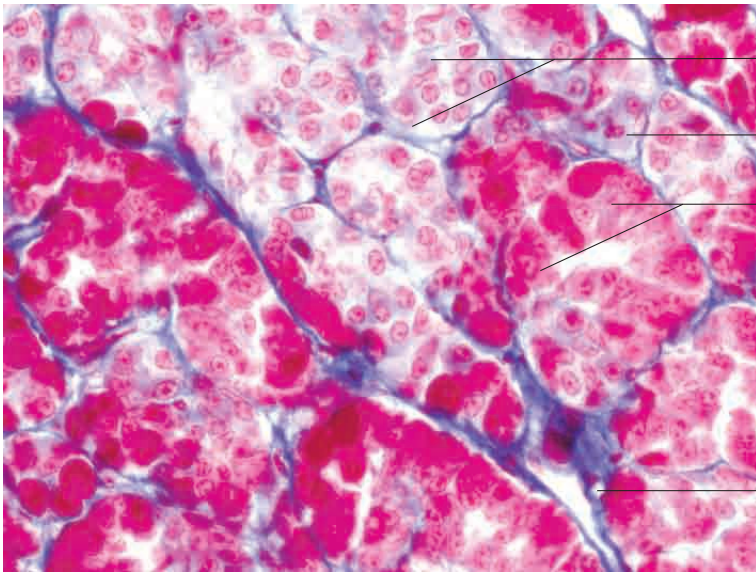


- Chromophilic, acidophilic cells
- Chromophilic, acidophilic cells
- Chromophobic cells
- Chromophilic, basophilic cell
- Capillary in connective tissue

Hypophysis, ox. Azan stain; x80.

9 Endocrine system





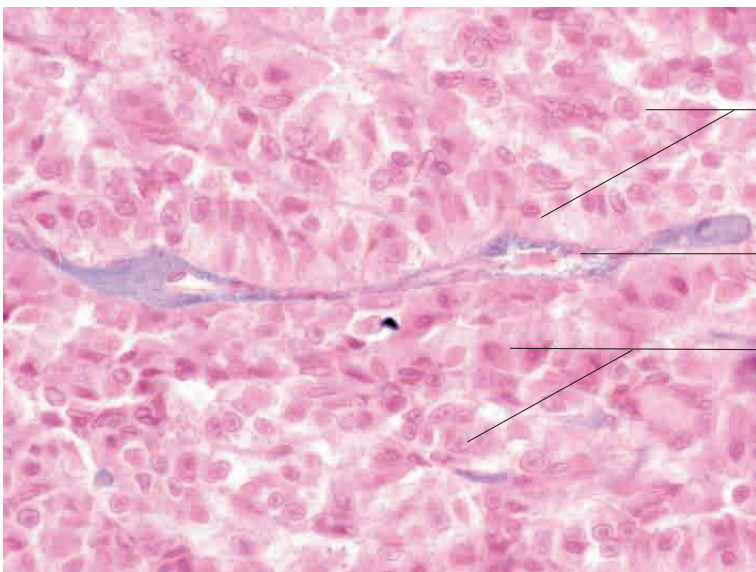
Chromophilic, basophilic cells

Chromophilic, basophilic cells

Chromophilic, acidophilic cells

Connective tissue with capillary

Hypophysis, ox; Azan stain; x400.

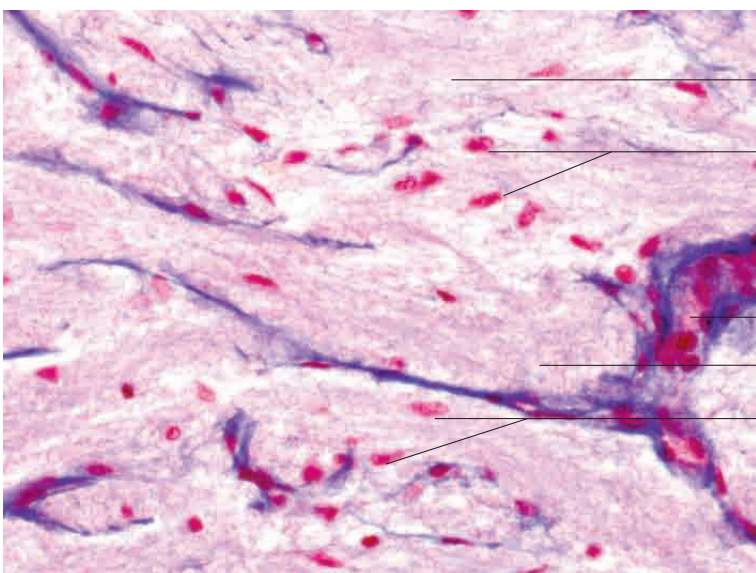


Basophilic and chromophobic cells

Connective tissue with vessels

Basophilic and chromophobic cells

Hypophysis, pars intermedia, ox.
Gomori stain; x350.



Nerve fibres

Nuclei of pituicytes

Capillary with erythrocytes

Nerve fibres

Nuclei of pituicytes

Neurohypophysis, ox.
Azan stain; x400.