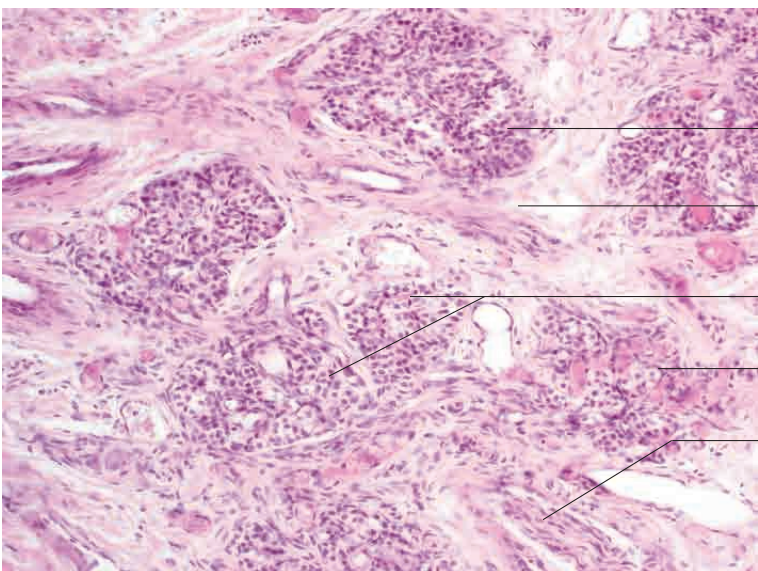
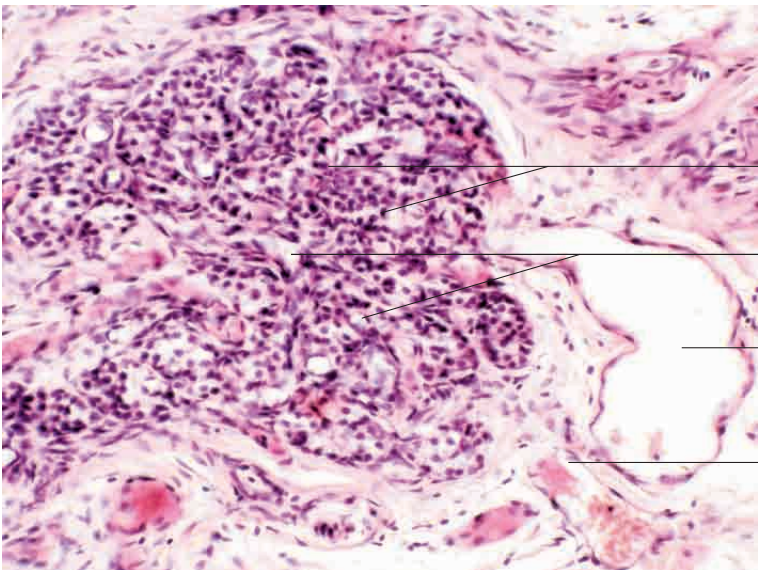
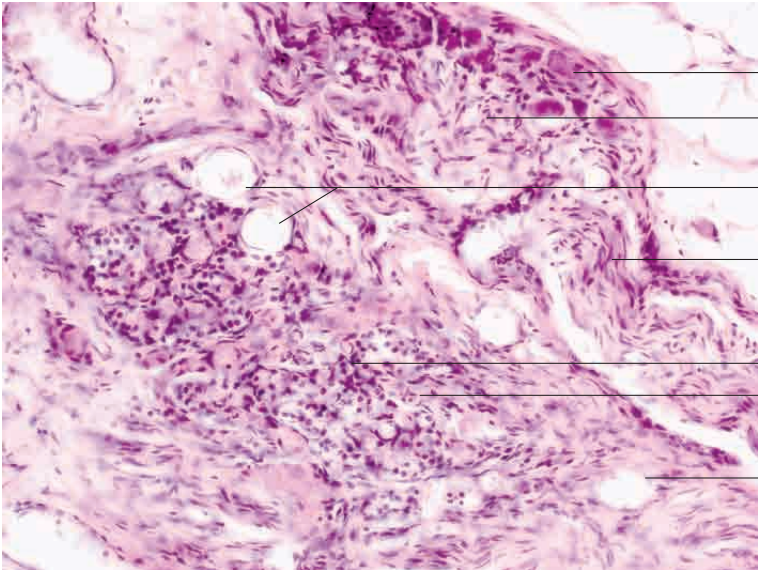
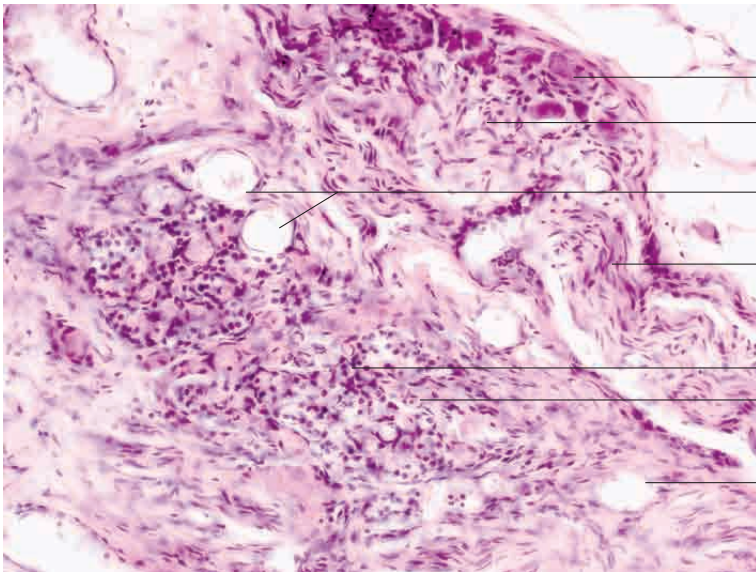


9 Endocrine system

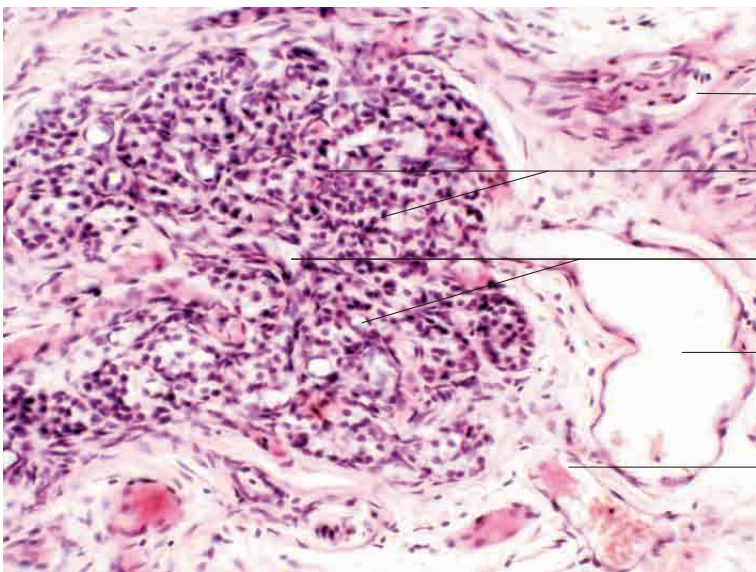
---





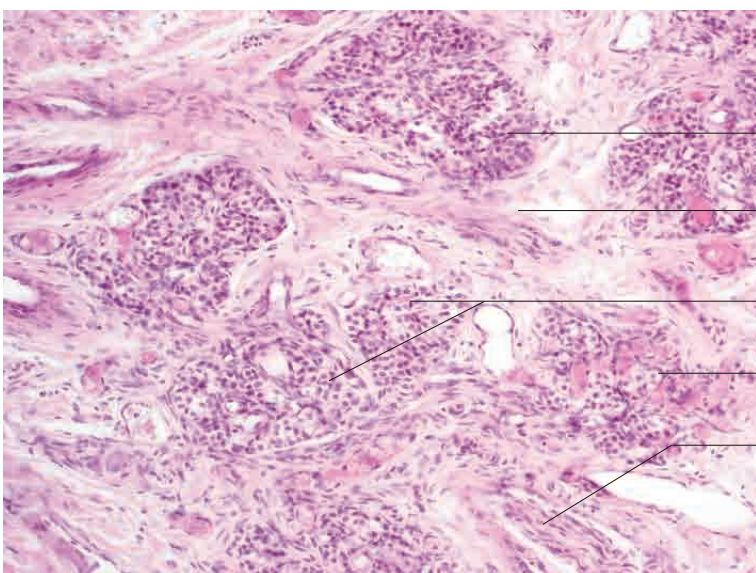
- Multipolar nerve cell
- Autonomic nerve fibre
- Dilated capillary
- Autonomic nerve fibre
- Oval, pale principal cells
- Elongated, dark support cells
- Capillary

Carotid body, cat. H.E. stain; x180.



- Autonomic nerve fibre
- Oval, pale principal cells and elongated, dark support cells
- Capillary
- Dilated post-capillary vessel
- Capillary

Carotid body, dog. H.E. stain; x200.



- Carotid body, heavily lobulated
- Loose connective tissue with vessels
- Carotid body, heavily lobulated
- Capillaries
- Autonomic nerve fibre

Carotid body, ox. H.E. stain; x120.