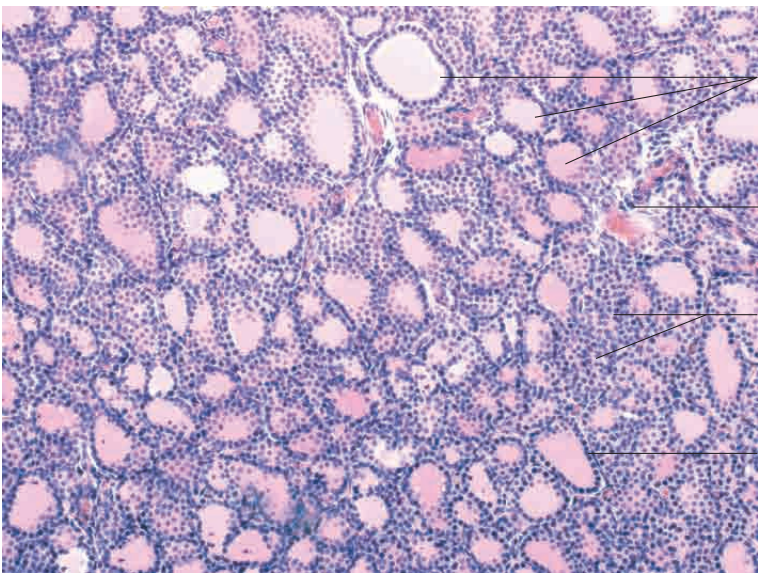
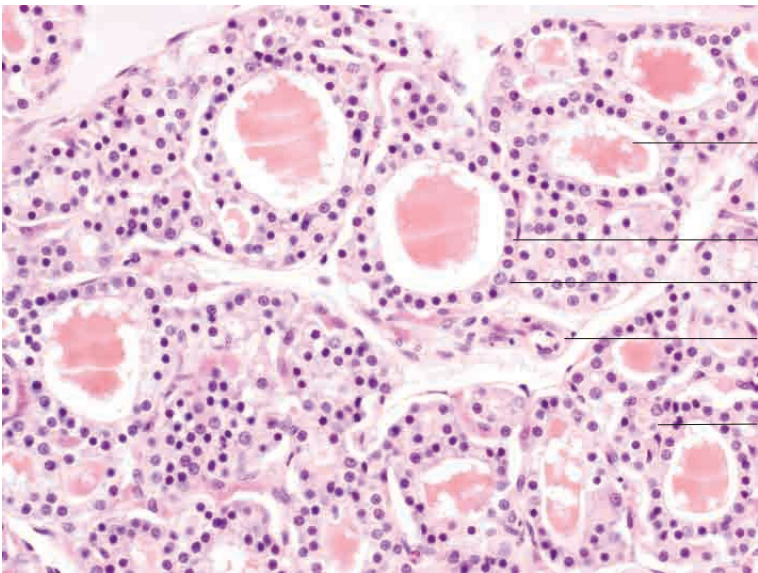
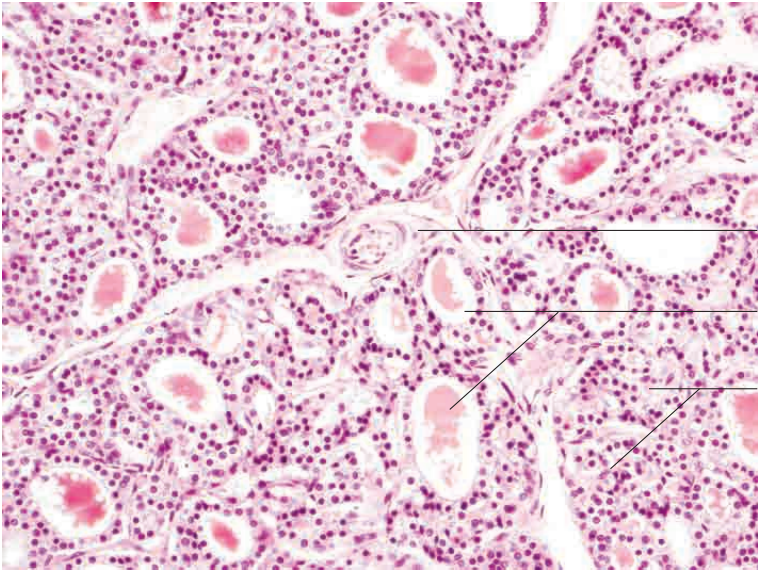
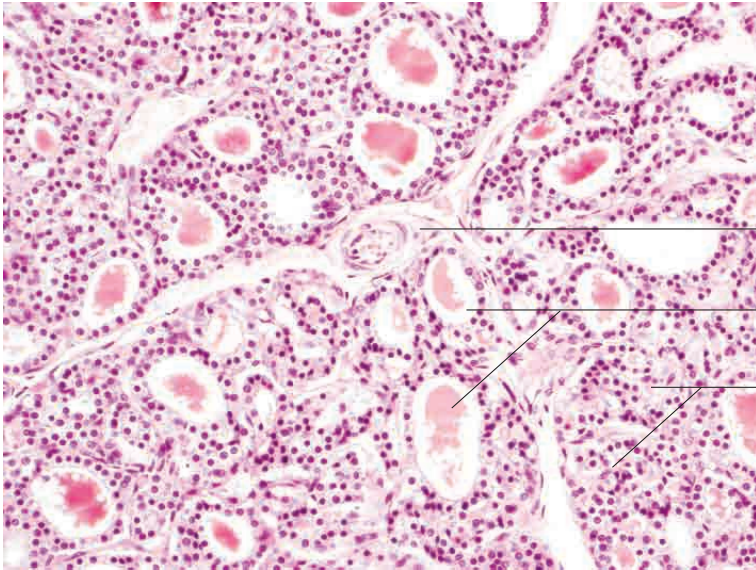


9 Endocrine system

---

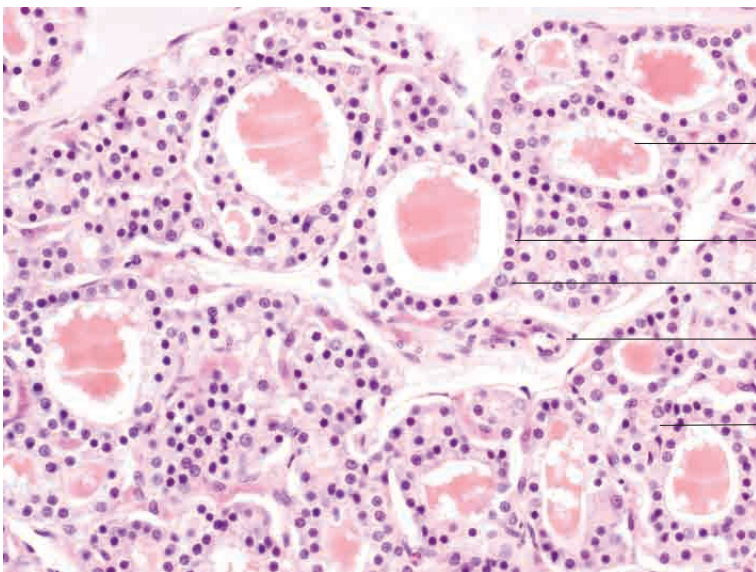






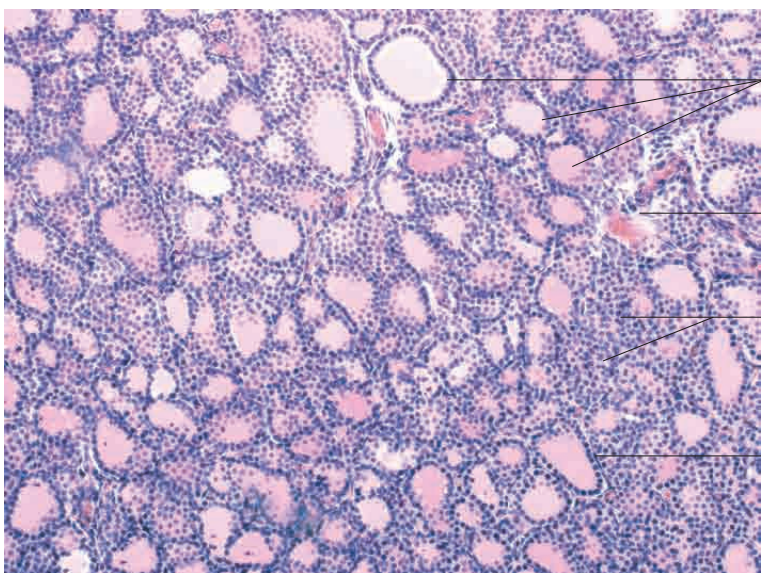
- Lobulation produced by loose connective tissue containing blood vessels
- Colloid-filled follicles
- Partial and flat-cut sections of medium-sized follicles

Thyroid gland, cat. H.E. stain; x200.



- Colloid within a follicle
- Simple cuboidal epithelium
- C cell
- Loose connective tissue with capillary
- Partial section of follicle wall

Thyroid gland, cat. H.E. stain; x400.

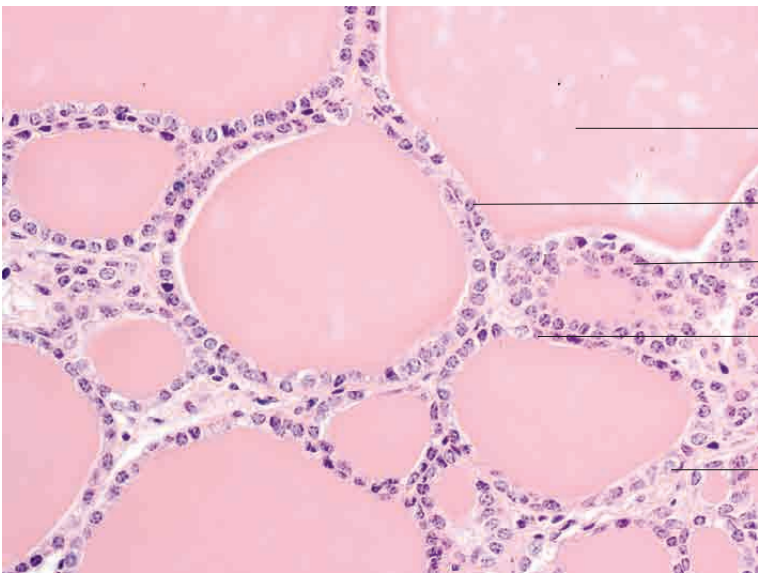
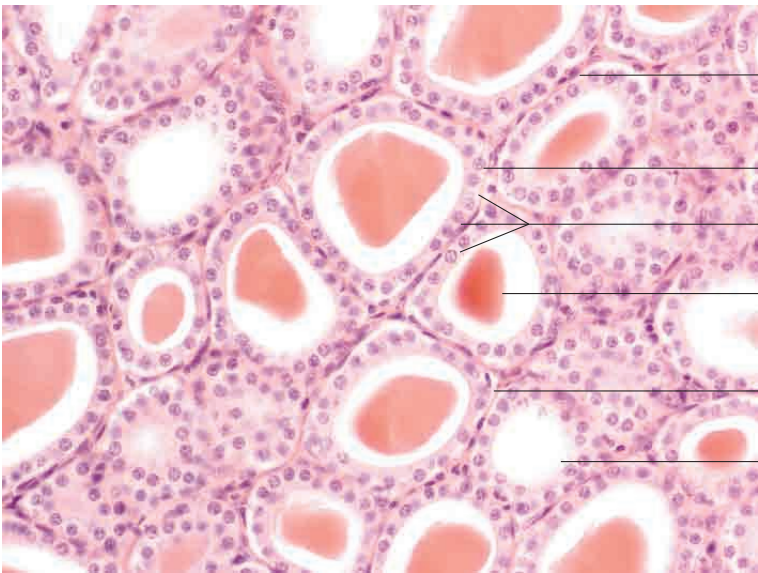
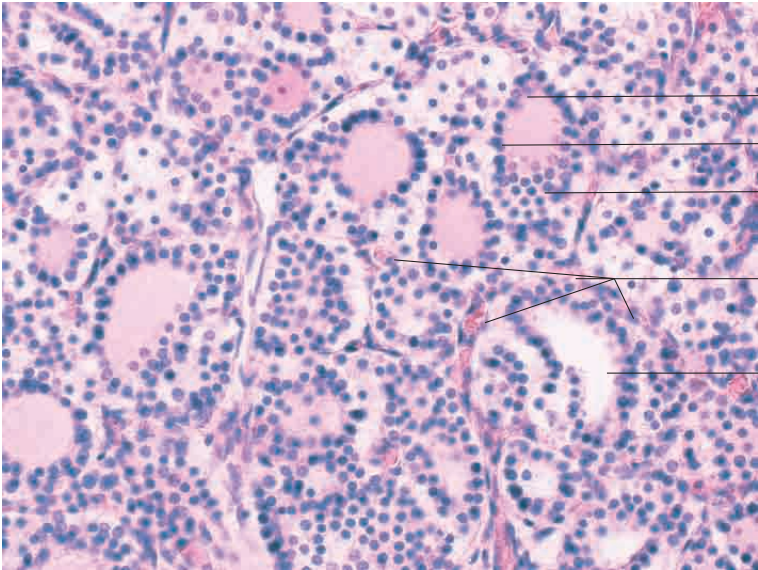


- Area of high follicle density; follicles in various phases of hormone synthesis
- Sparse connective tissue (indistinct lobulation)
- Partial section of follicle wall
- Simple cuboidal epithelium

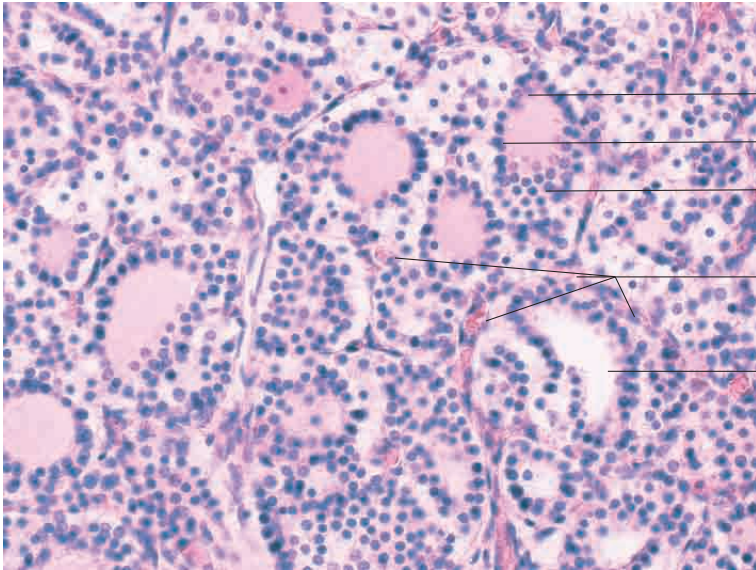
Thyroid gland, dog. H.E. stain; x200.

9 Endocrine system

---

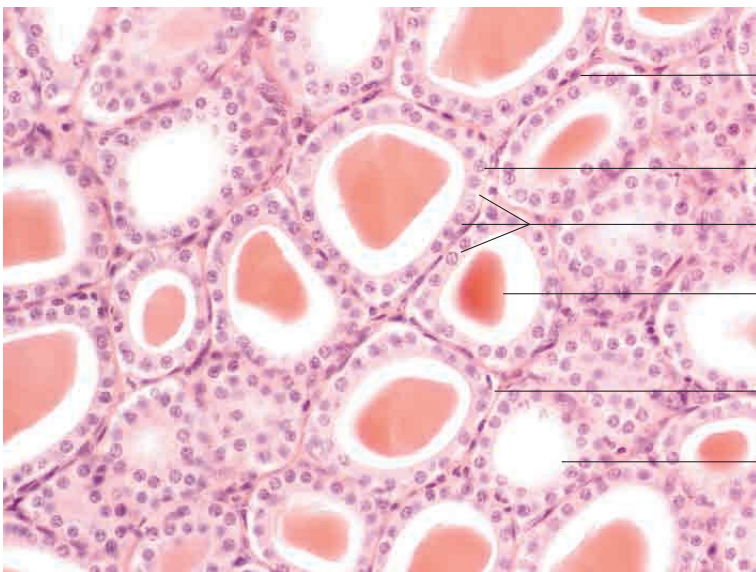






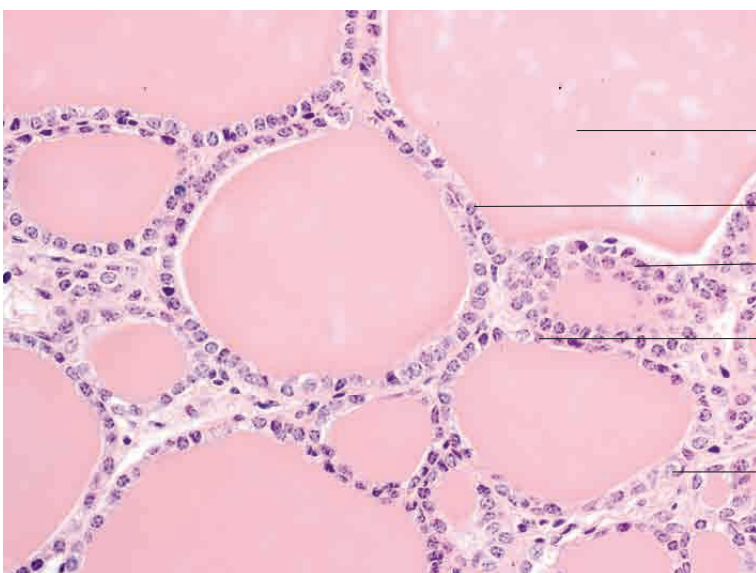
- C cell
- Simple cuboidal epithelium and colloid
- Flat-cut section of follicle wall
- Dense capillary network
- Empty follicle

Thyroid gland, dog. H.E.; x400.



- Loose connective tissue with fibrocytes and capillaries
- C cell
- Simple cuboidal epithelium
- Colloid (condensed by processing)
- Loose connective tissue
- Lumen of follicle (content lost during processing)

Thyroid gland, pig. H.E. stain; x400.

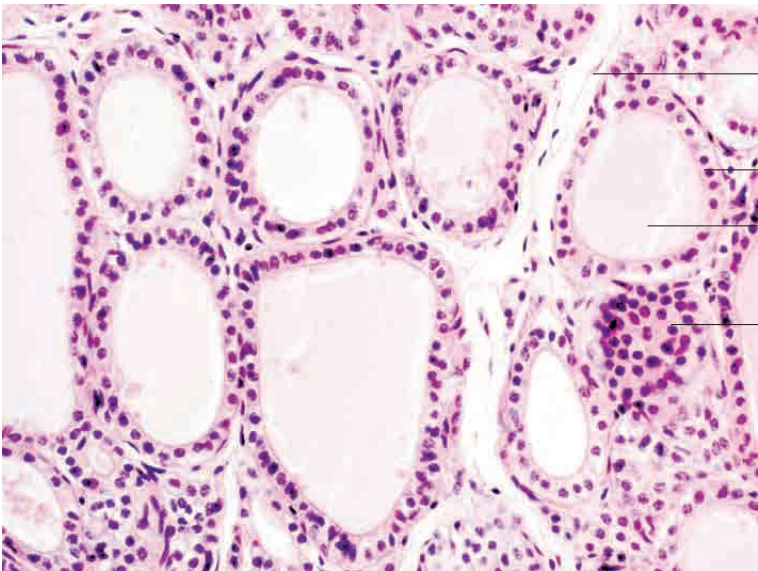
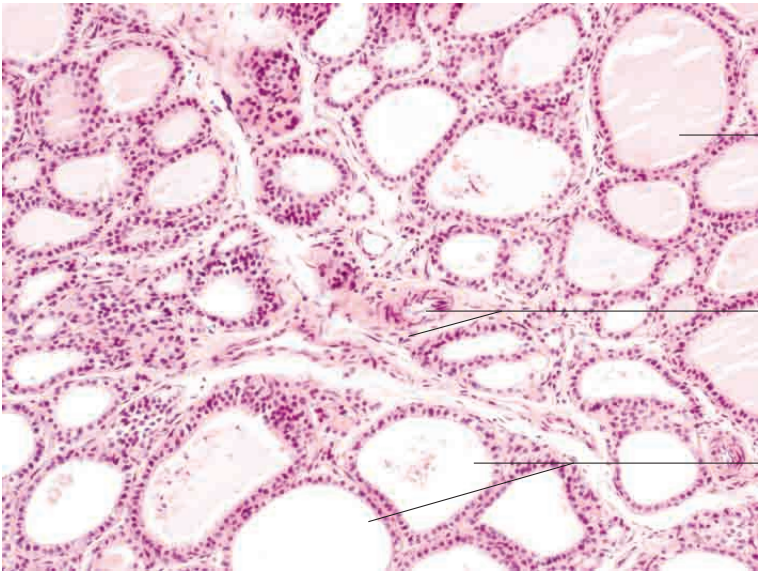
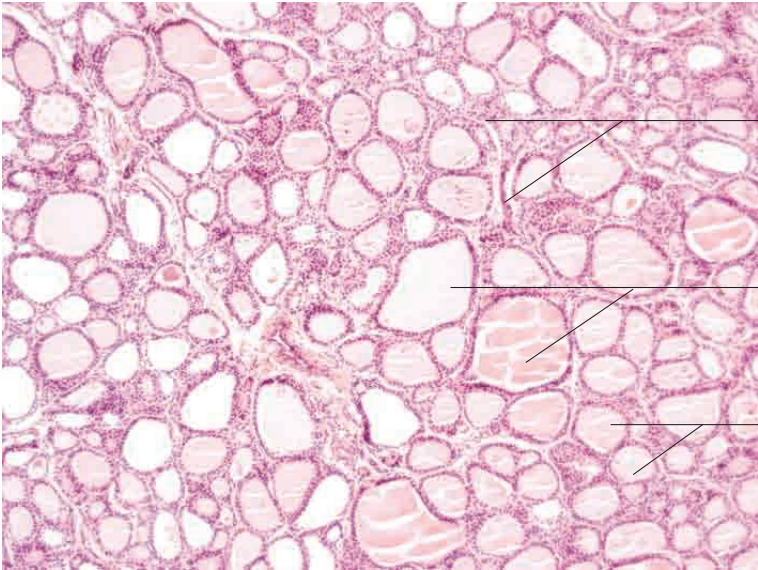


- Follicle completely filled with colloid
- Simple cuboidal epithelium
- Flat-cut section of simple cuboidal epithelium
- Low cuboidal epithelium
- C cell

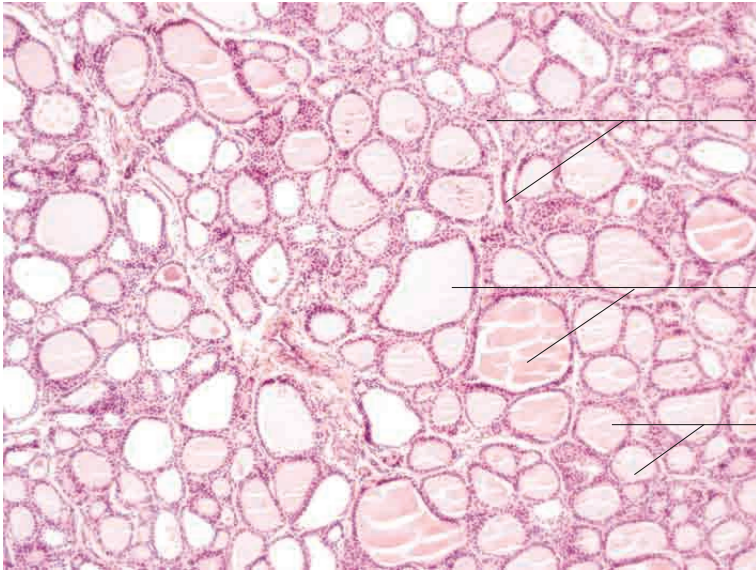
Thyroid gland, pig. H.E. stain; x400.

9 Endocrine system

---





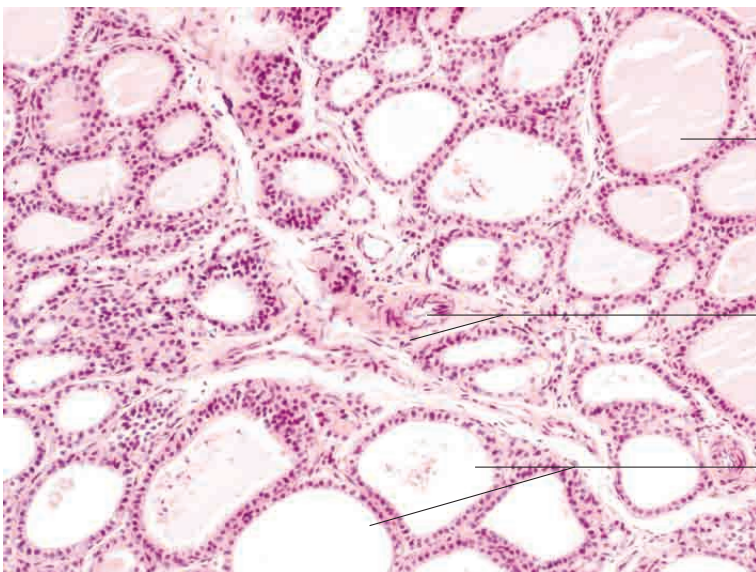


Minimal lobulation produced by loose connective tissue

Follicle in synthetic phase

Follicles in secretory phase

Thyroid gland, horse. H.E. stain; x100.

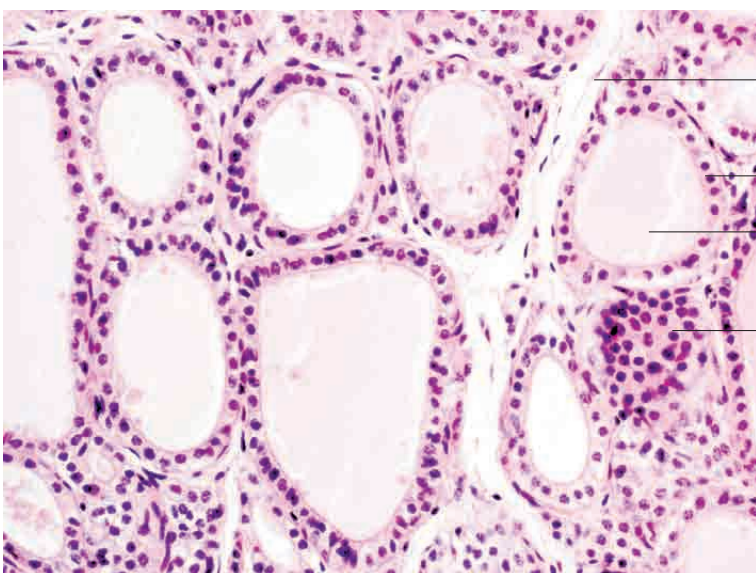


Follicle with colloid in storage phase (low cuboidal epithelium)

Loose connective tissue with capillary and arteriole, with minimal lobulation

Follicle with sparse colloid in synthetic phase (tall cuboidal epithelium)

Thyroid gland, horse. H.E. stain; x200.



Scantly developed connective tissue

Simple cuboidal epithelium

Colloid

Flat-cut section of epithelium of follicular wall

Thyroid gland, horse. H.E. stain; x400.