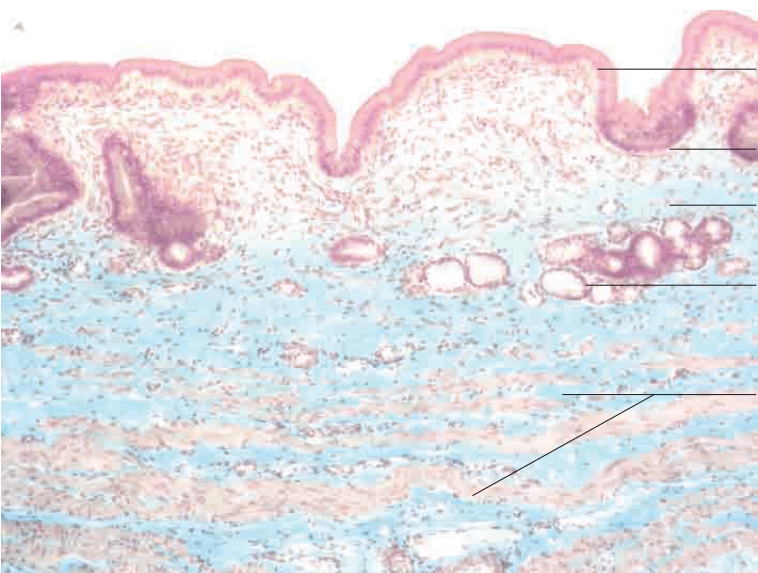
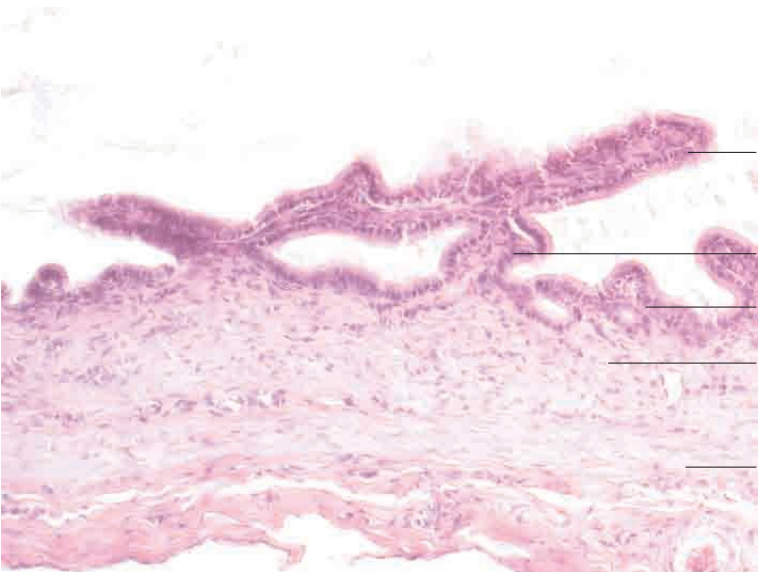


10 Digestive system





Simple columnar epithelium with microvilli (brush border)

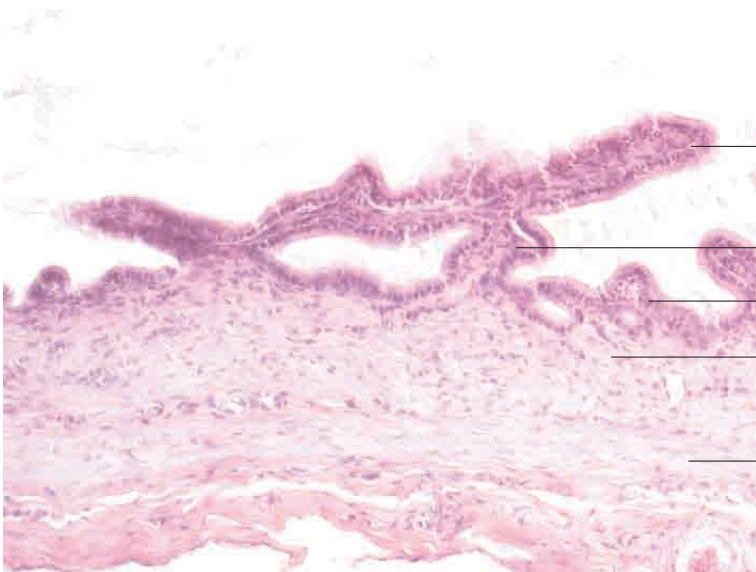
Mucosal folds

Mucosal folds (partial sections)

Lamina propria mucosae

Spirally oriented smooth muscle fibres in tunica muscularis

Gall bladder, dog. H.E. stain; x200.



Simple columnar epithelium with microvilli (brush border)

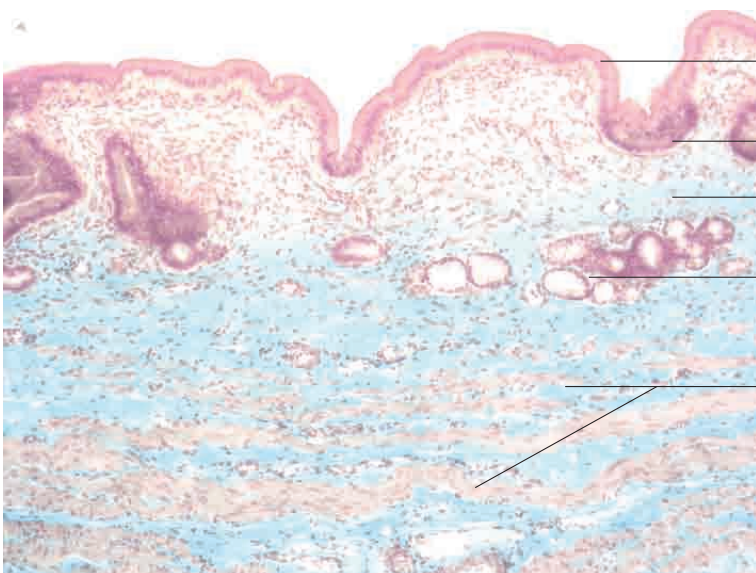
Mucosal folds (expanded)

Mucosal fold (partial section)

Lamina propria mucosae

Spirally oriented smooth muscle fibres in tunica muscularis (stretched)

Gall bladder, dog. H.E. stain; x200.



Simple columnar epithelium with microvilli (brush border)

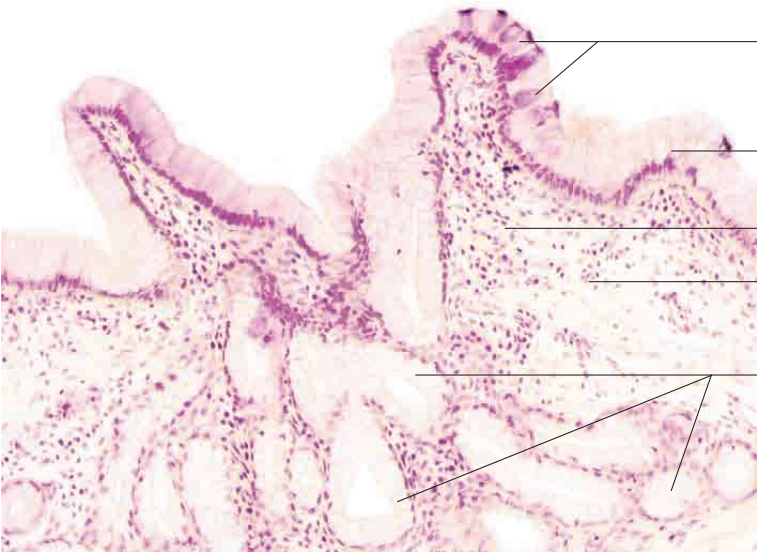
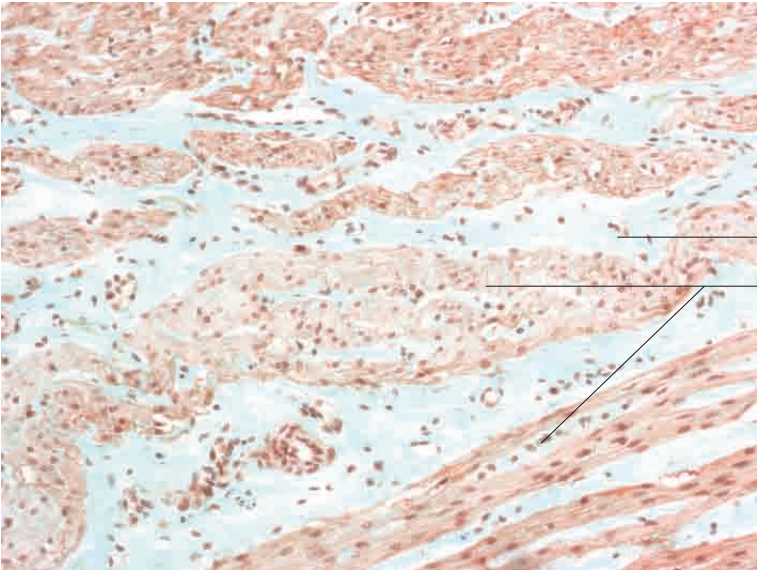
Mucosal folds

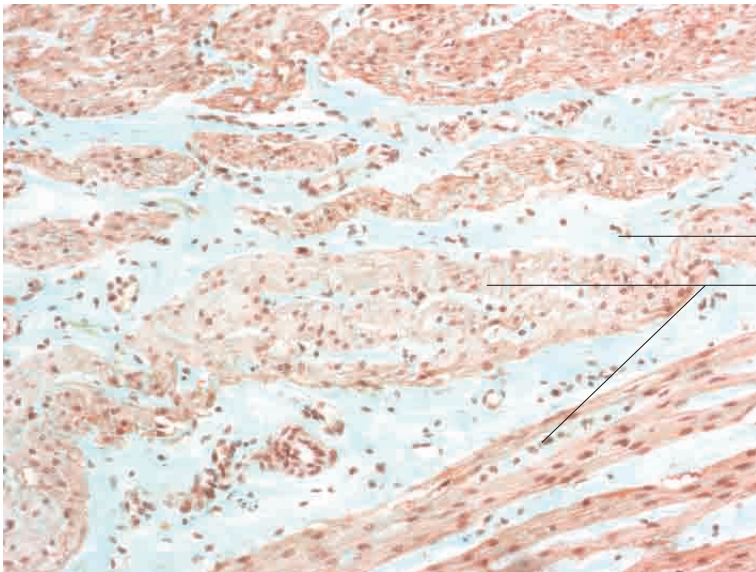
Lamina propria mucosae

Mucous glands

Spirally oriented smooth muscle fibres in tunica muscularis

Gall bladder, ox. Goldner's Masson trichrome stain; x100.

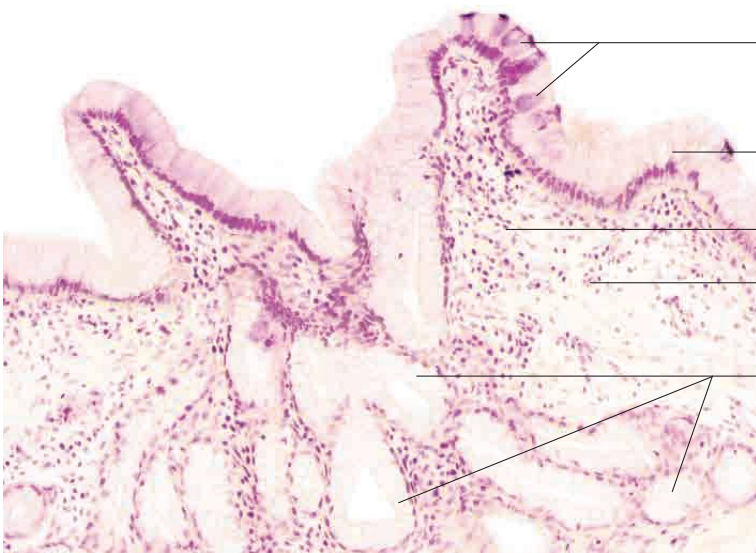




Lamina propria mucosae

Spirally oriented smooth muscle fibres
in tunica muscularis

Gall bladder, ox. Goldner's Masson trichrome
stain; x200.



Goblet cells

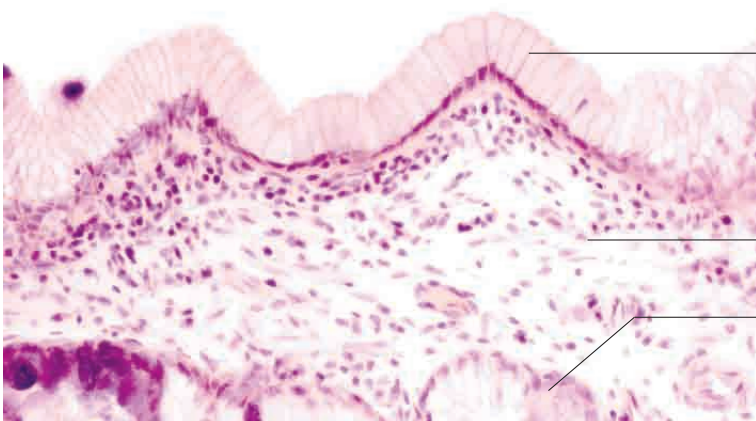
Simple columnar epithelium with
microvilli (brush border)

Mucosal folds

Lamina propria mucosae

Transition from mucosal folds to
sparse mucous glands

Gall bladder, pig. H.E. stain; x200.



Simple columnar epithelium with
microvilli (brush border)

Lamina propria mucosae

Mucous glands

Gall bladder, pig. H.E. stain; x400.