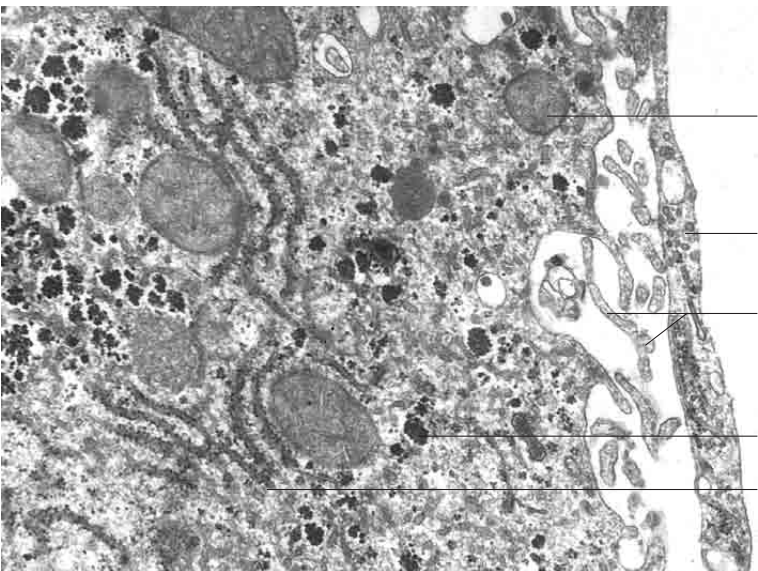
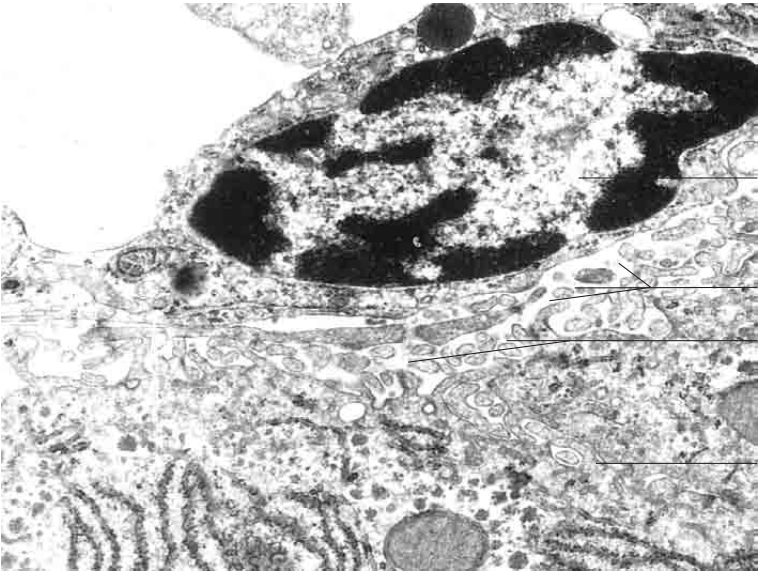
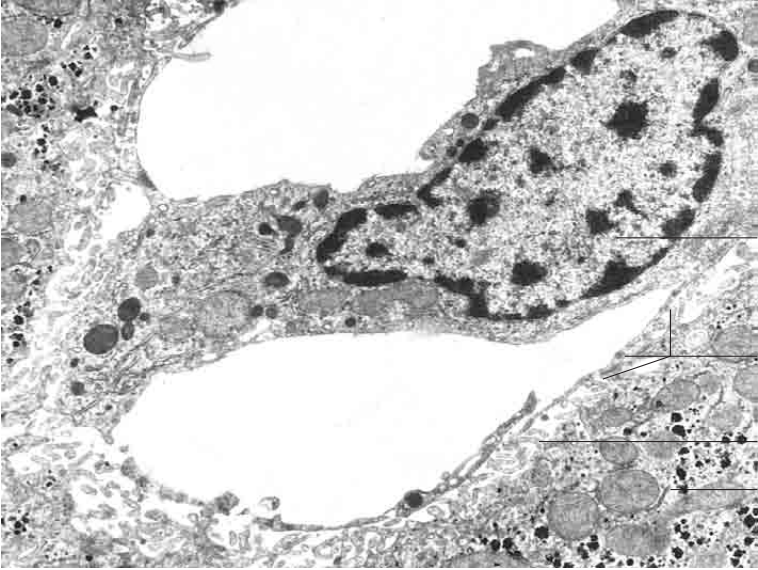
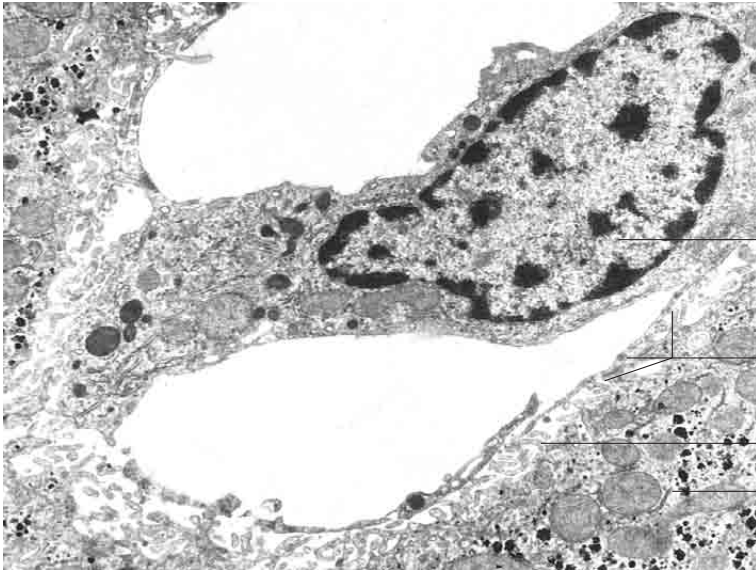


10 Digestive system

---





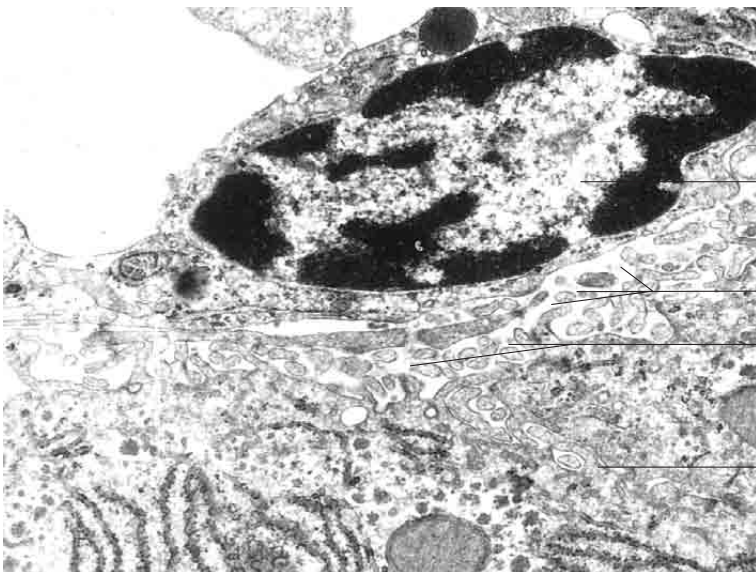
Nucleus of stellate macrophage (Kupfer cell)

Cytoplasm of sinusoidal endothelial cell with pores

Perisinusoidal space with reticular fibres

Cytoplasm of hepatocyte

Liver, stellate macrophage, horse; x7500.



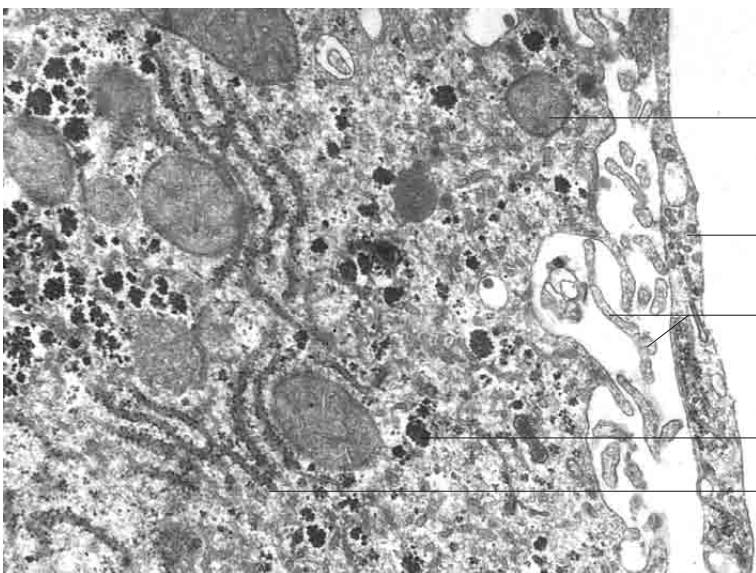
Nucleus of endothelial cell lining sinusoid

Endothelial pores in wall of sinusoid

Perisinusoidal space with reticular fibres

Interdigitating boundaries of adjacent liver cells

Liver, wall of sinusoid, horse; x9000.



Mitochondrion

Cytoplasm of sinusoidal endothelial cell

Finger-like processes of hepatocyte in perisinusoidal space

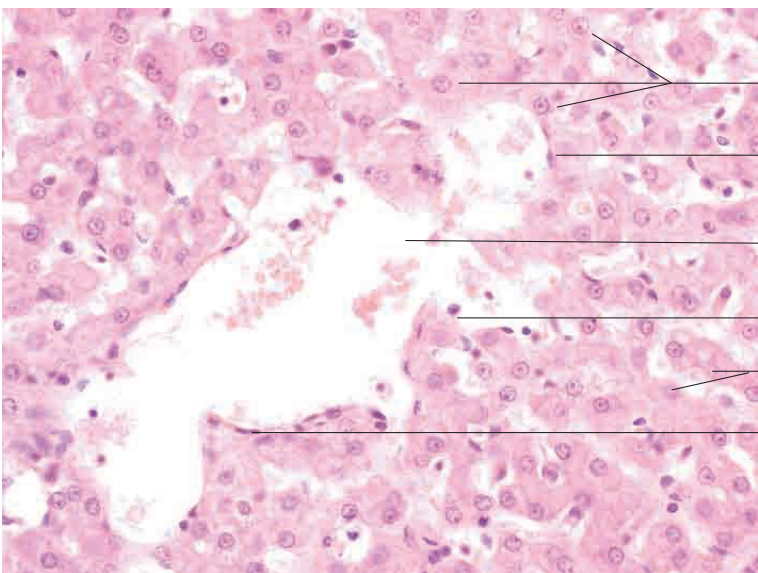
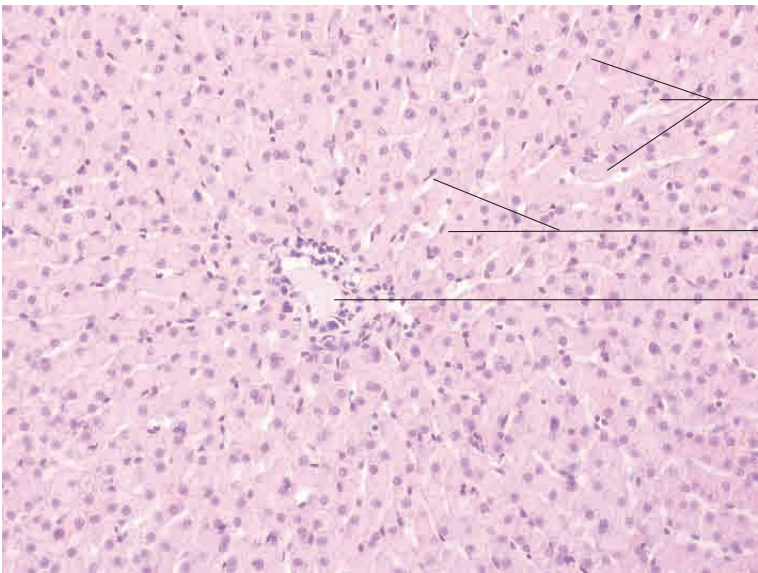
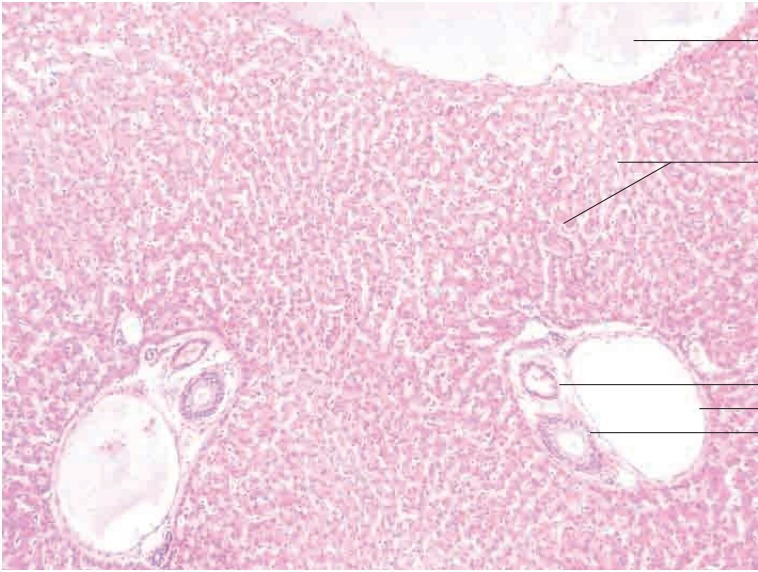
Glycogen

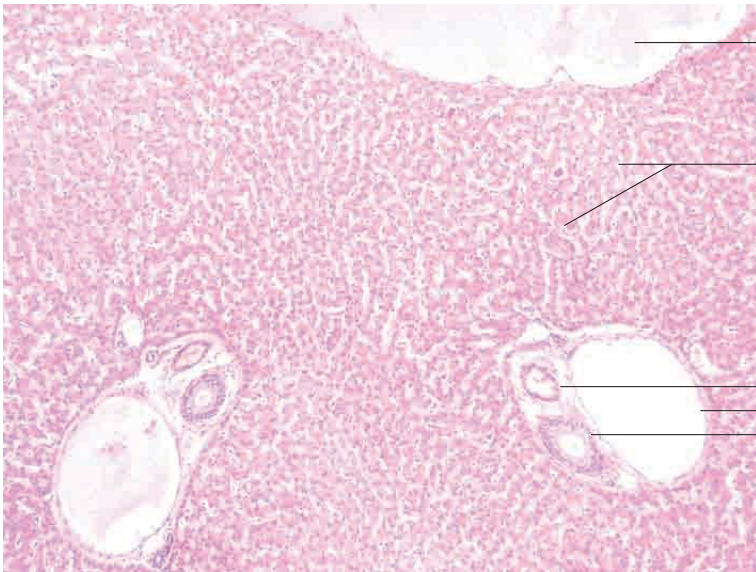
Rough endoplasmic reticulum

Liver, perisinusoidal space, horse; x9000.

# 10 Digestive system

---



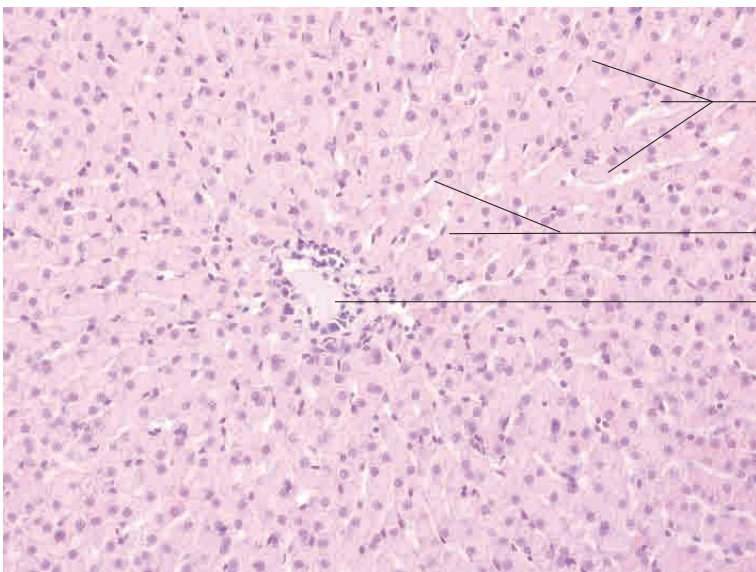


Sublobular vein

Liver cell plates

Portal canal:  
Interlobular artery  
Interlobular vein  
Interlobular bile duct

Liver, dog. H.E. stain; x100.

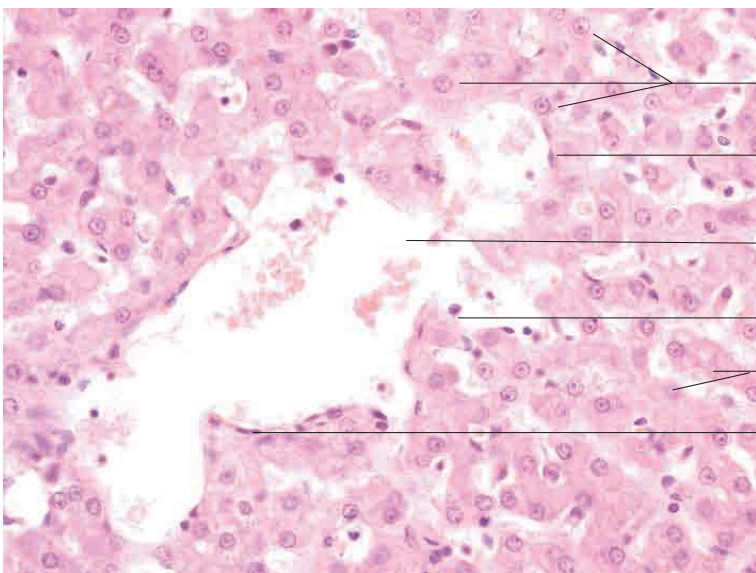


Liver cell plates with round hepatocyte nuclei

Sinusoid with flattened endothelial cell nuclei

Central vein with loose perivascular connective tissue

Liver, dog. H.E. stain; x200.



Hepatocytes with round nuclei

Wall of sinusoid with flattened nucleus

Sinusoid lumen with blood cells

Stellate macrophage

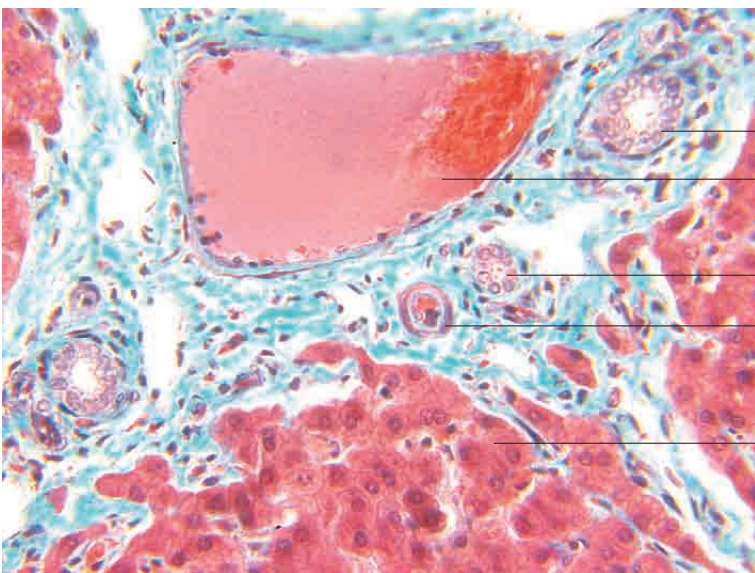
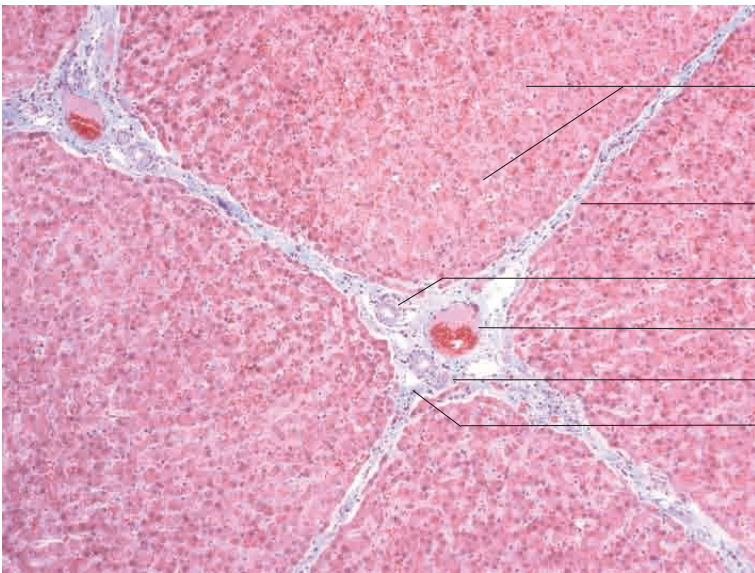
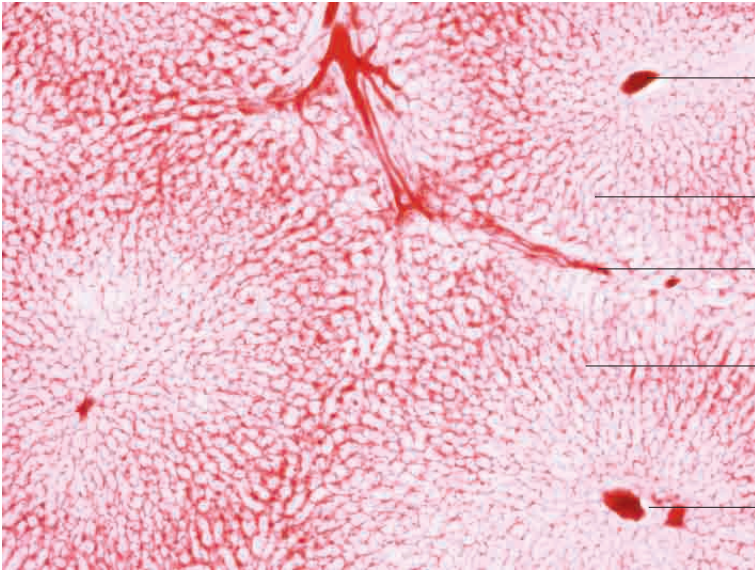
Liver cell plate

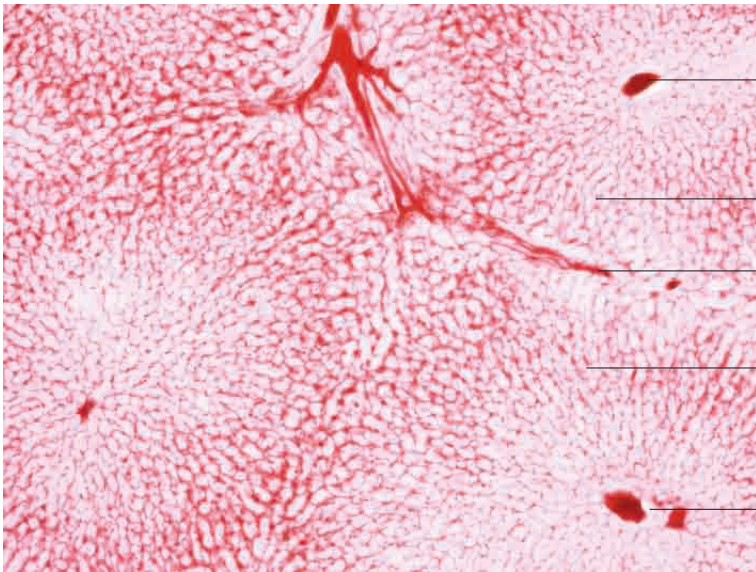
Wall of sinusoid with flattened nucleus

Liver, dog. H.E. stain; x400.

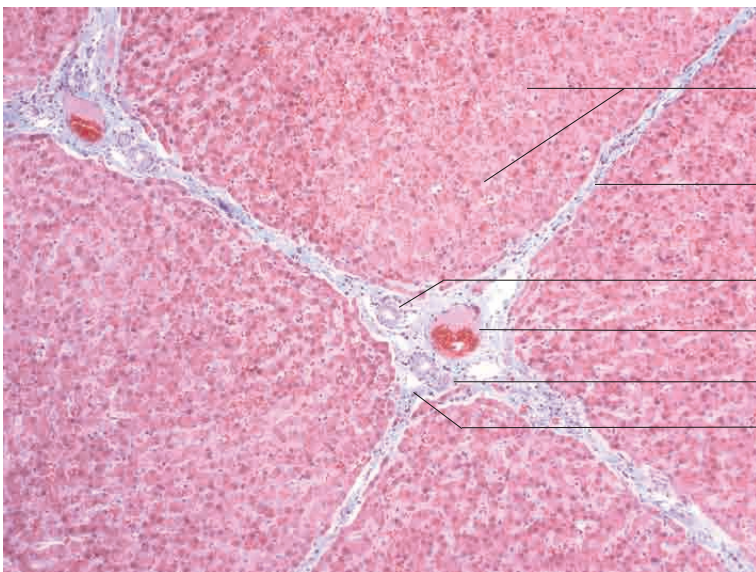
# 10 Digestive system

---

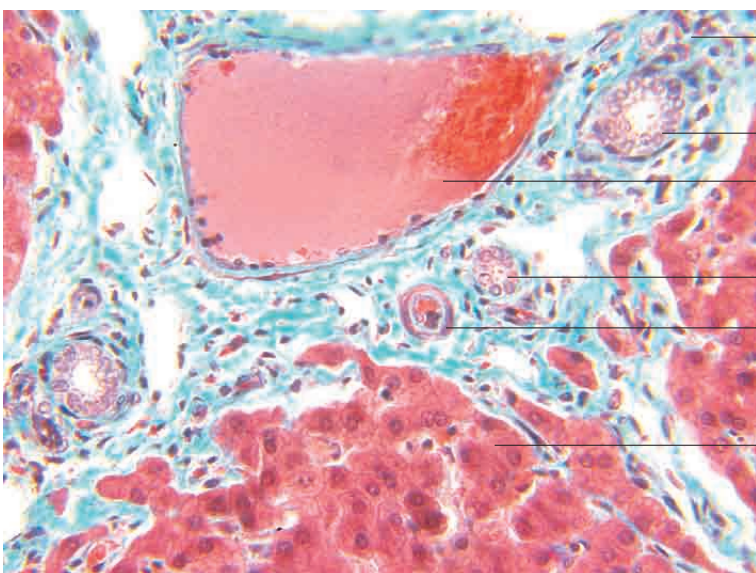




Central vein  
 Liver lobule with branching capillaries  
 Interlobular vessels  
 Liver lobule with branching capillaries  
 Central vein  
 Liver, cat. Injection specimen; x100.



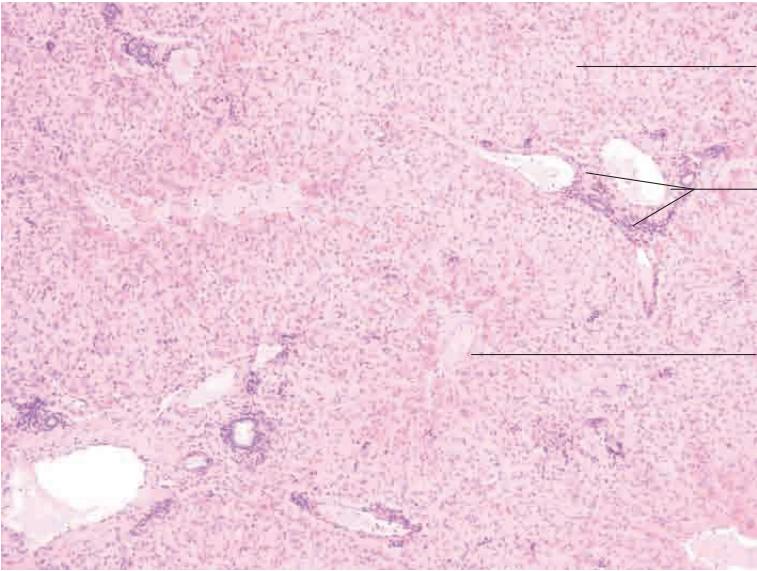
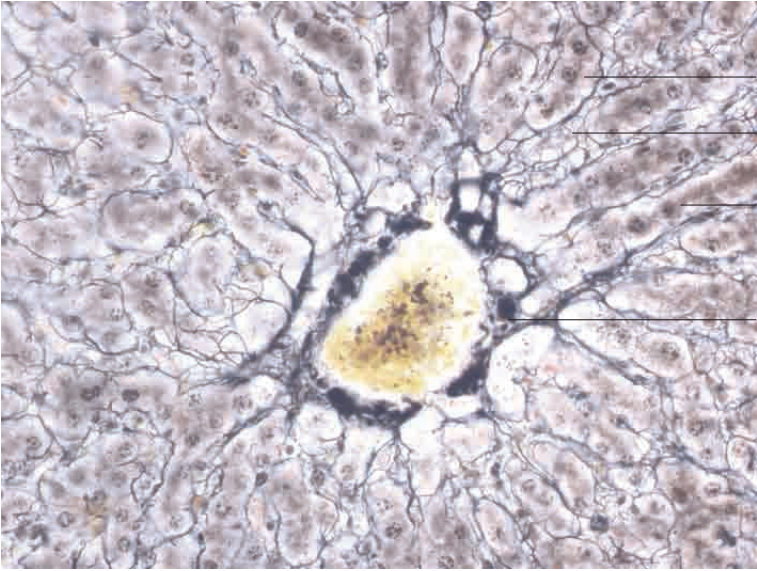
Liver lobule with liver cell plates  
 Relatively abundant interlobular connective tissue  
 Interlobular bile duct  
 Interlobular vein  
 Interlobular artery  
 Lymph vessel  
 Liver, portal canal, pig. Goldner's Masson trichrome stain; x100.

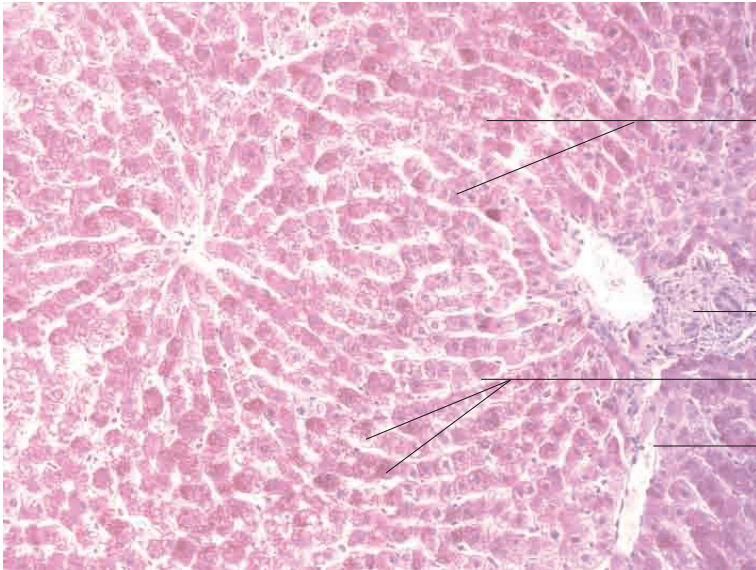


Loose interlobular connective tissue  
 Interlobular bile duct  
 Interlobular vein  
 Interlobular bile duct  
 Interlobular artery  
 Liver lobule with liver cell plates  
 Liver, portal canal, pig. Goldner's Masson trichrome stain; x400.

10 Digestive system

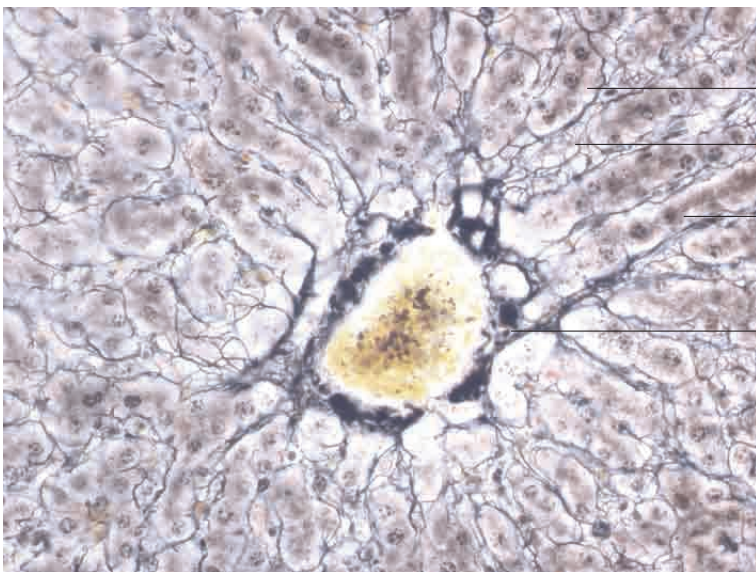
---





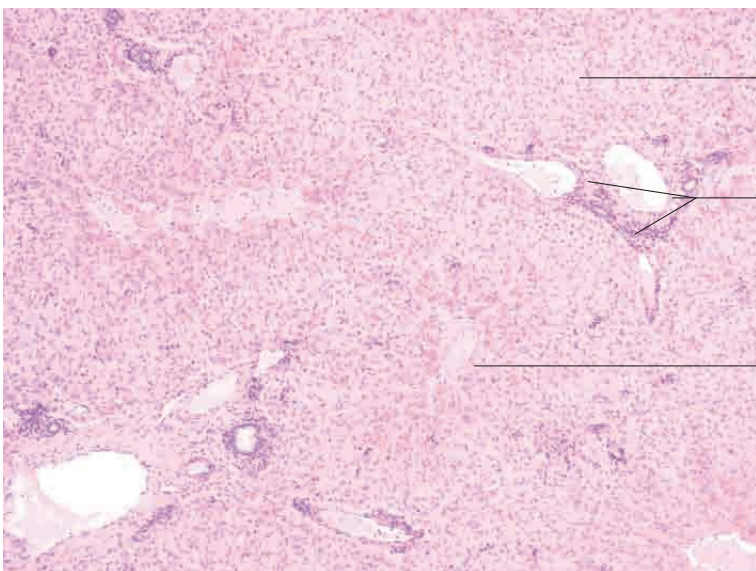
- Liver cell plate
- Portal canal
- Liver cells with glycogen
- Sparse interlobular connective tissue

Liver, ox. **Glycogen stain**; x200



- Liver cell plates surrounded by reticular fibres
- Reticular fibres
- Liver cell plates surrounded by reticular fibres
- Perivascular fibre network in perisinusoidal space around a central vein

Liver, calf. **Achucarro method**; x400.



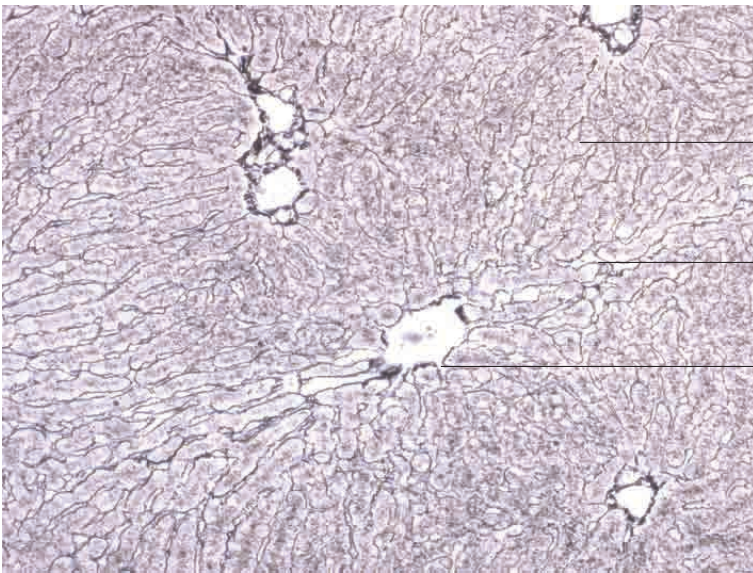
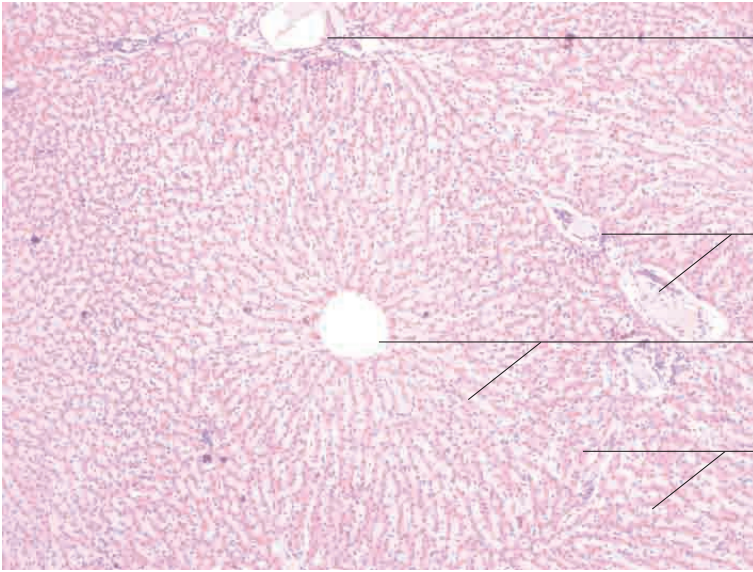
- Parenchyma (liver cells)
- Portal canal
- Central vein

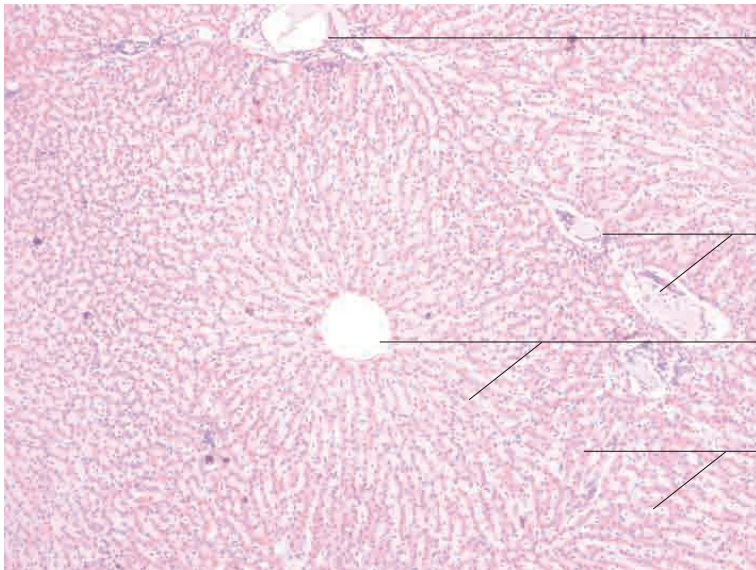
Liver, horse. **H.E. stain**; x40.



# 10 Digestive system

---





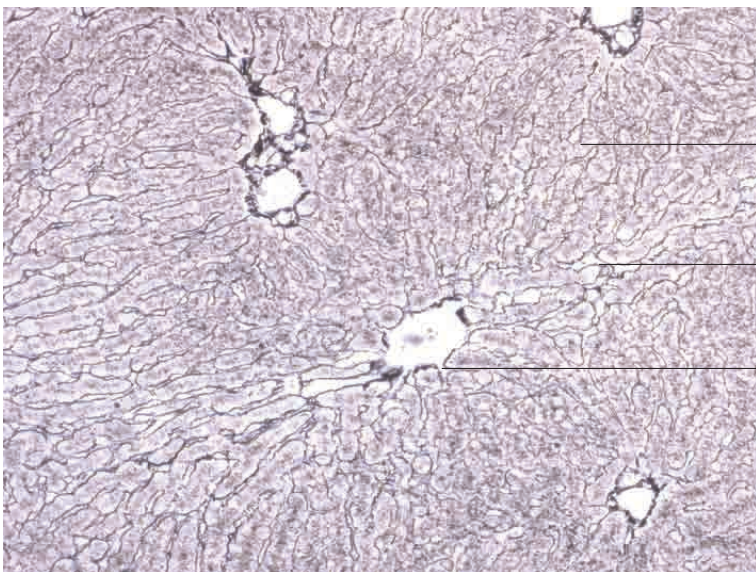
Portal canal

Interlobular veins between adjacent liver lobules, scant connective tissue

Liver lobule with dilated central vein

Interlobular veins between adjacent liver lobules, scant connective tissue

Liver, horse. H.E. stain; x100.



Liver cell plates with superficial reticular fibres

Sparse reticular fibres between adjacent liver lobules

Perivascular fibre network in perisinusoidal space around a central vein

Liver, horse. Achucarro method; x200



Sublobular vein

Wall of vein

Interlobular artery

Branching interlobular bile duct

Liver, horse. H.E. stain; x200.