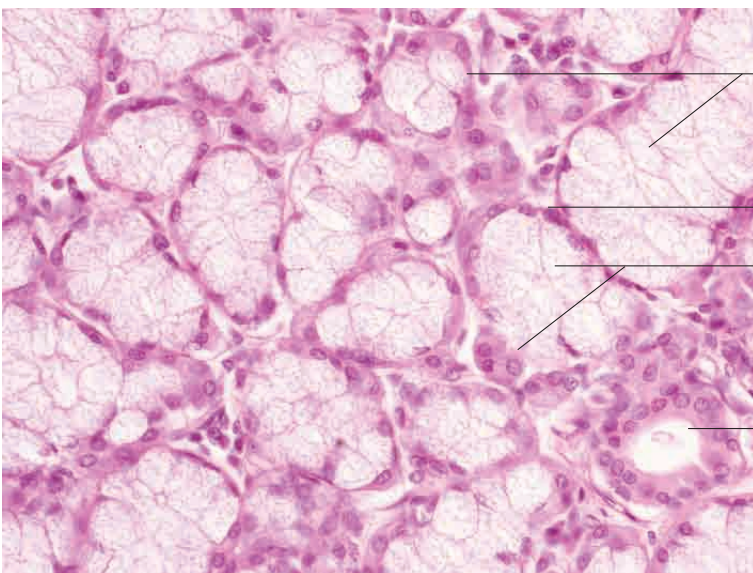
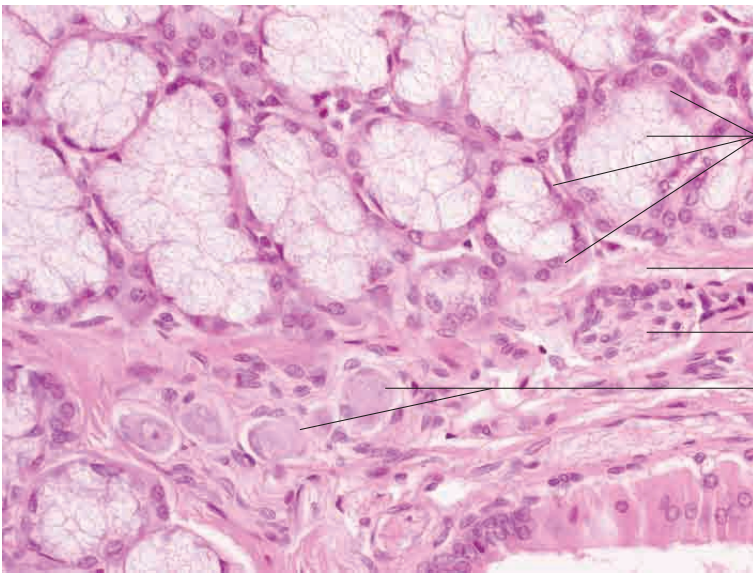
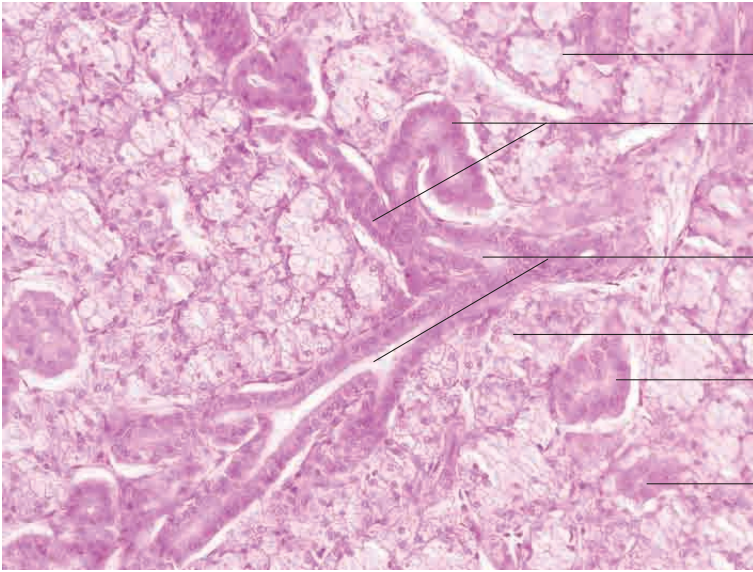
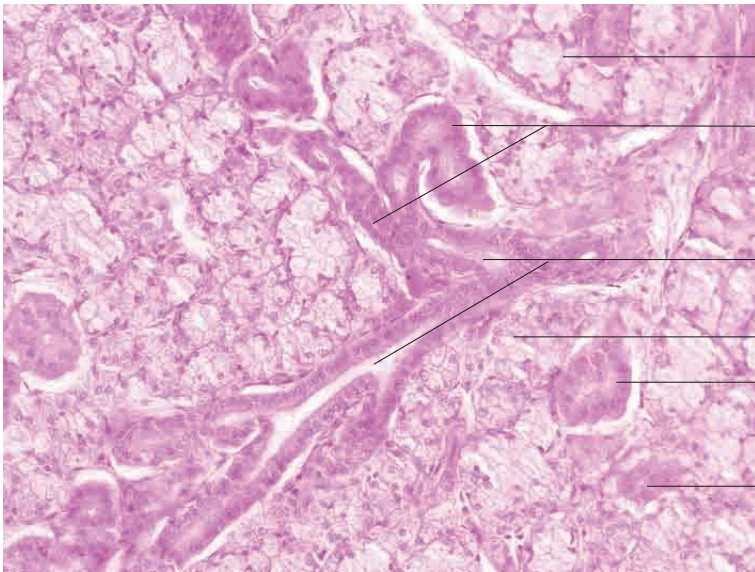


10 Digestive system

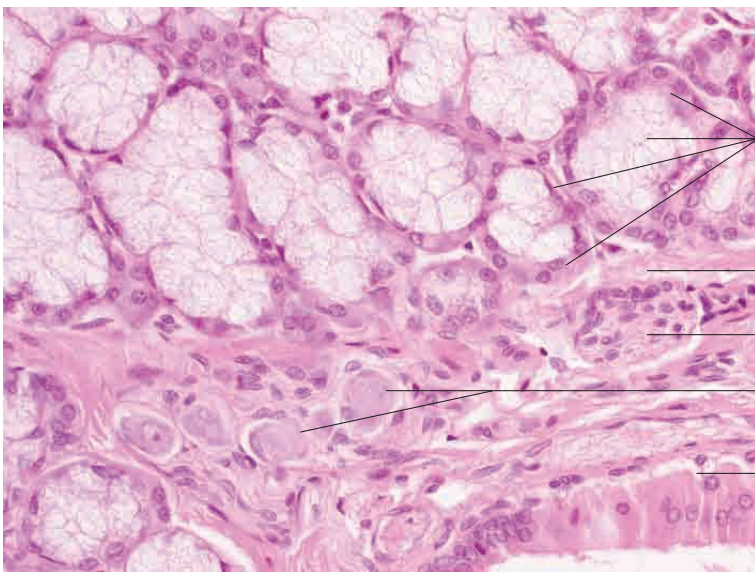


Mandibular gland



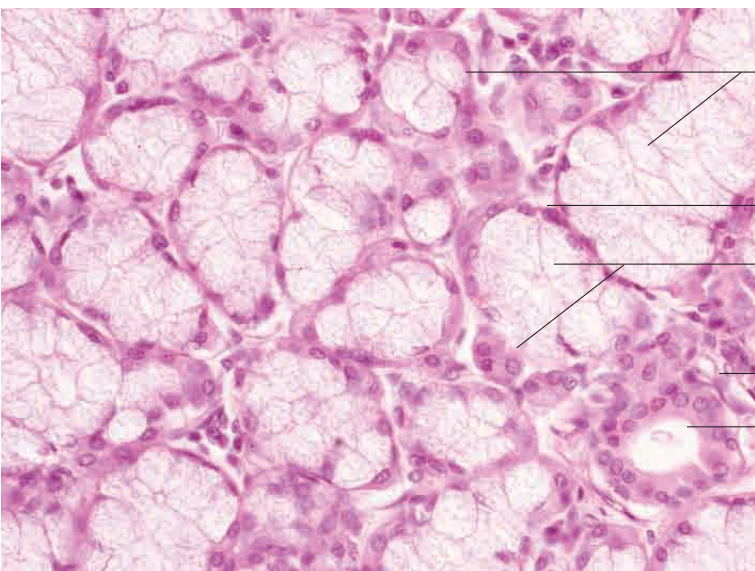
- Mucous end pieces
- Intralobular secretory ducts with simple columnar epithelium
- Interlobular secretory ducts with simple to bilayered columnar epithelium
- Mucous end pieces
- Intralobular secretory duct
- Intercalated duct

Mandibular gland, cat. H.E. stain; x200.



- Mixed glandular end pieces with peripheral, flattened basally located nuclei and light, foamy cytoplasm (mucous component) and cap-like serous end pieces
- Loose interstitial connective tissue
- Autonomic nerve fibre bundle
- Multipolar nerve cells in autonomic ganglion
- Interlobular secretory duct with simple to bilayered columnar epithelium

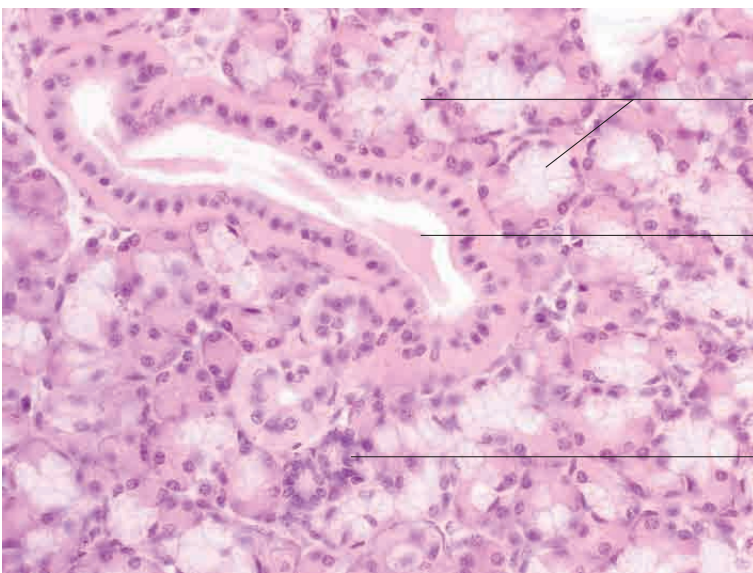
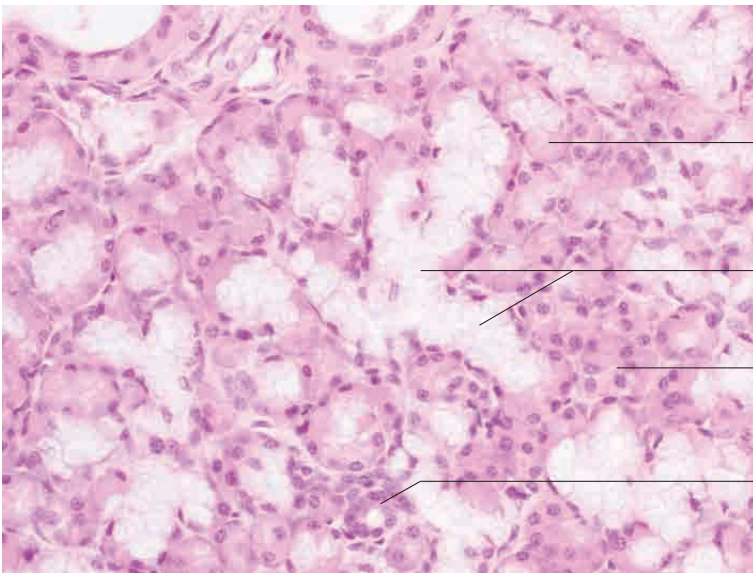
Mandibular gland, dog. H.E. stain; x400.

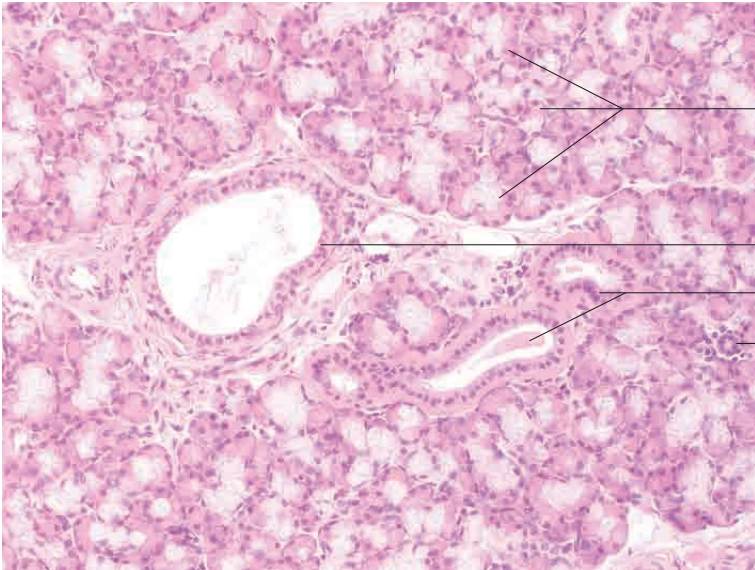


- Mixed glandular end pieces
- Loose interstitial connective tissue
- Mixed glandular end pieces
- Capillary
- Intralobular secretory duct

Mandibular gland, dog. H.E. stain; x400.

10 Digestive system



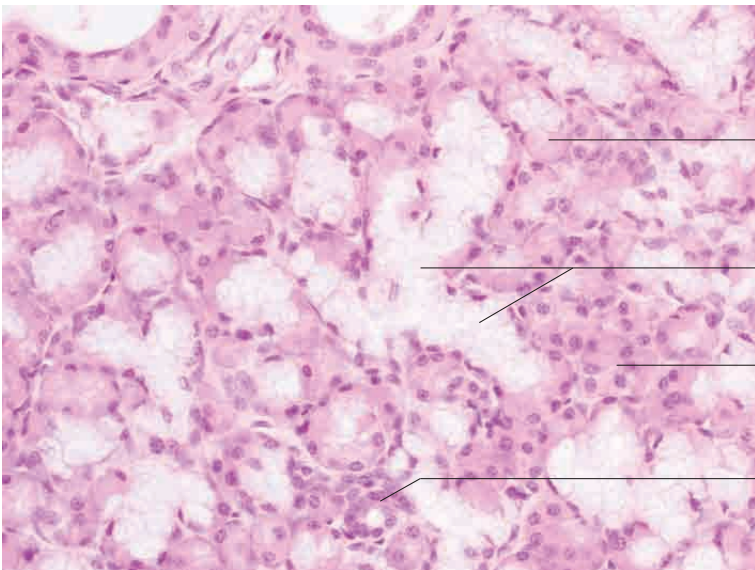


Mixed glandular end pieces

Interlobular secretory ducts

Intralobular secretory ducts Intercalated duct

Mandibular gland, sheep. H.E. stain; x200.



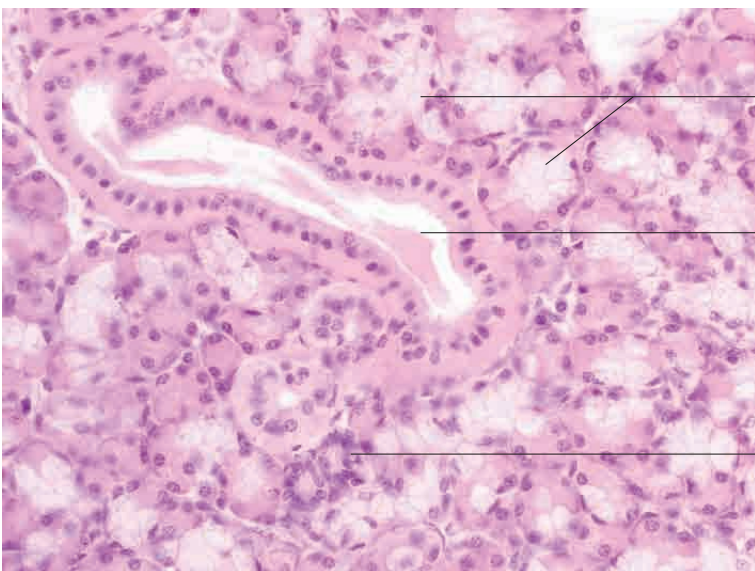
Mixed glandular end pieces

Predominantly mucous end pieces

Mixed glands, predominantly serous end pieces

Intercalated duct

Mandibular gland, sheep H.E. stain; x400.



Mixed glandular end pieces

Intralobular secretory ducts with simple columnar epithelium and intraluminal secretion

Intercalated duct

Mandibular gland, sheep. H.E. stain; x400.