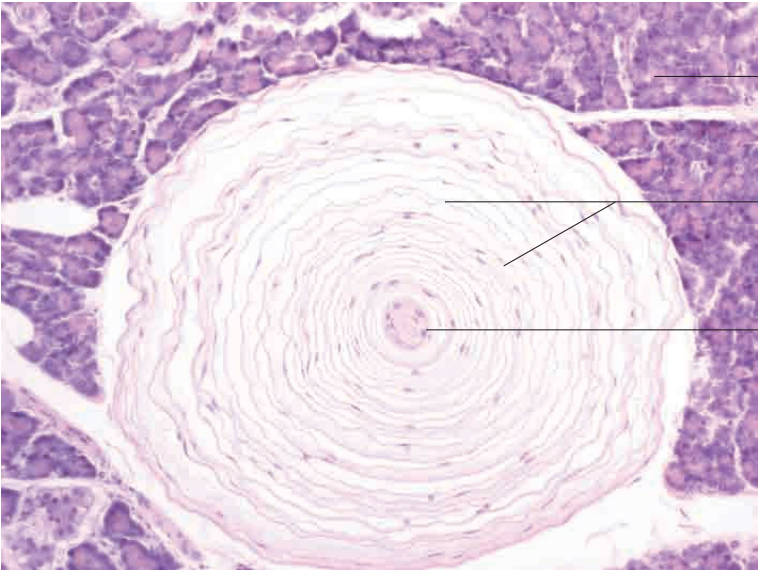
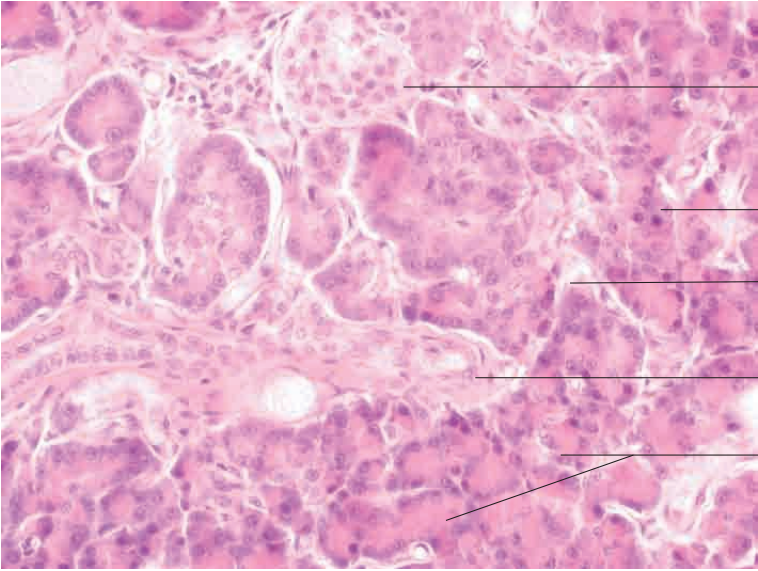
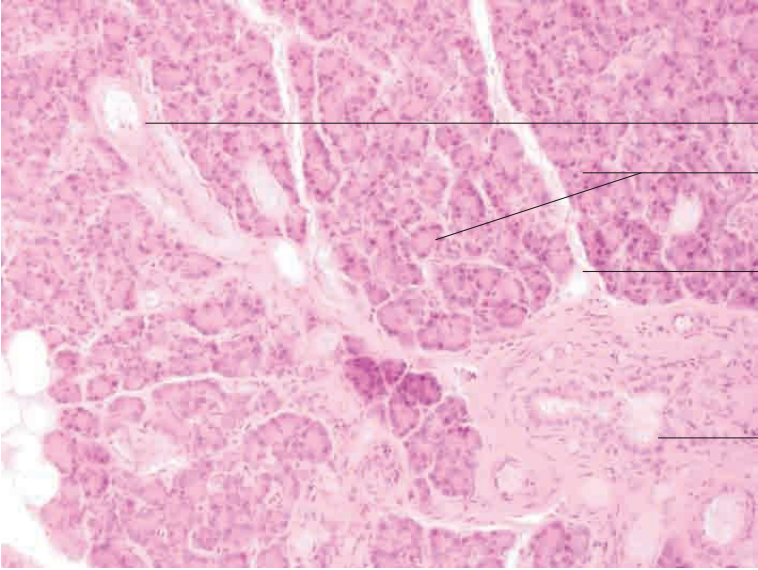
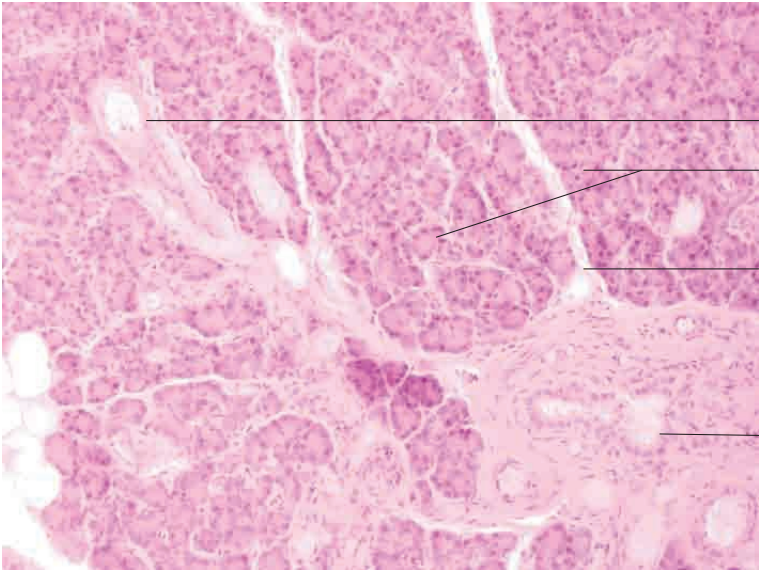


10 Digestive system

---

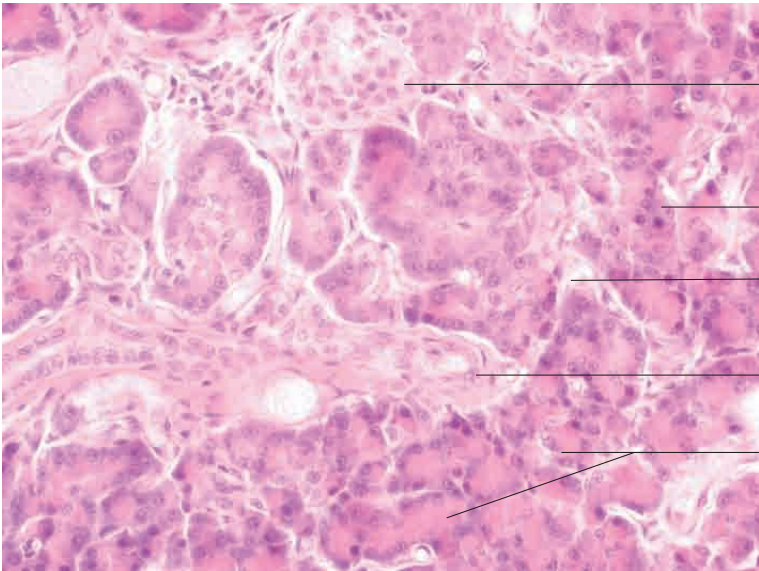


Exocrine pancreas



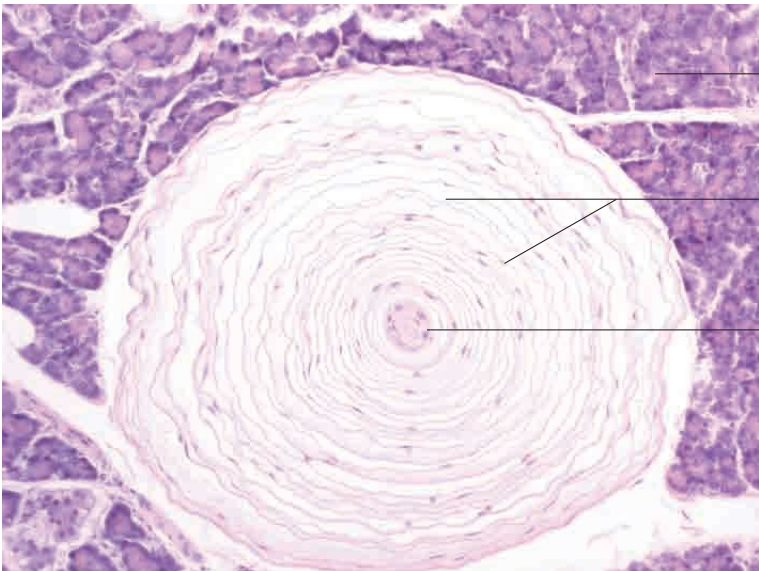
- Interlobular secretory duct with connective tissue
- Exocrine, tubuloacinar compound serous secretory end pieces
- Connective tissue septa
- Stratified epithelium of excretory duct

Pancreas, cat. H.E. stain; x200.



- Endocrine portion of pancreas (islet)
- Round nucleus of exocrine cells
- Connective tissue septa
- Interlobular secretory duct with connective tissue
- Exocrine, tubuloacinar compound serous secretory end piece

Pancreas, cat; x400.

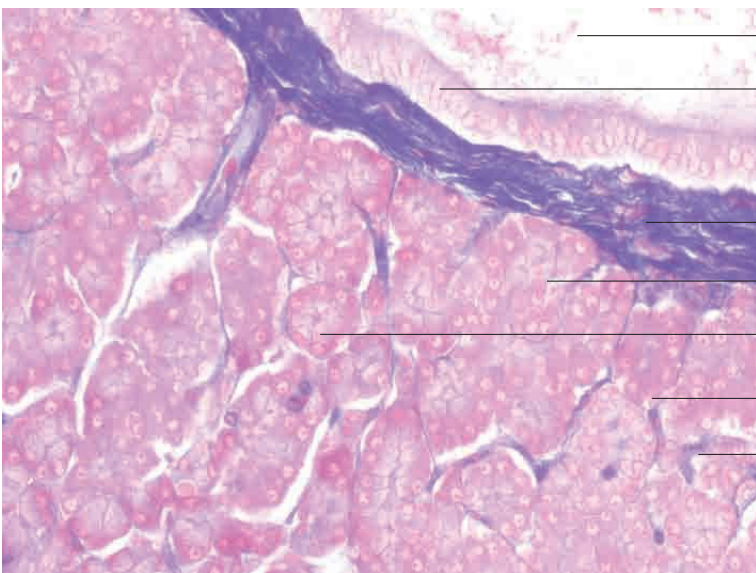
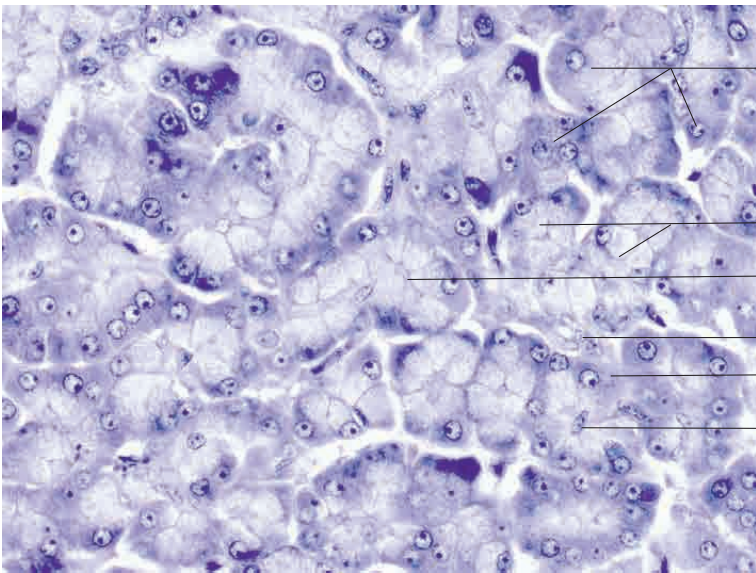
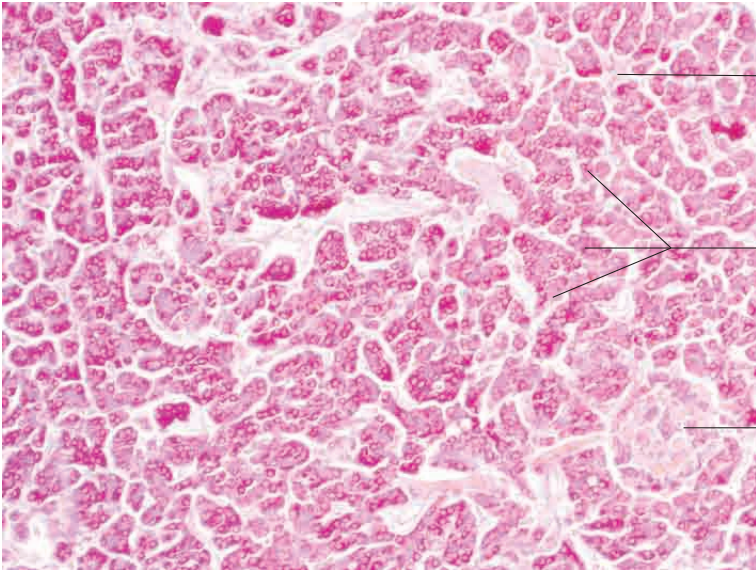


- Exocrine portion of pancreas
- Fibrocyte sheath with collagen fibres and interstitial fluid in intervening spaces
- Nerve fibre

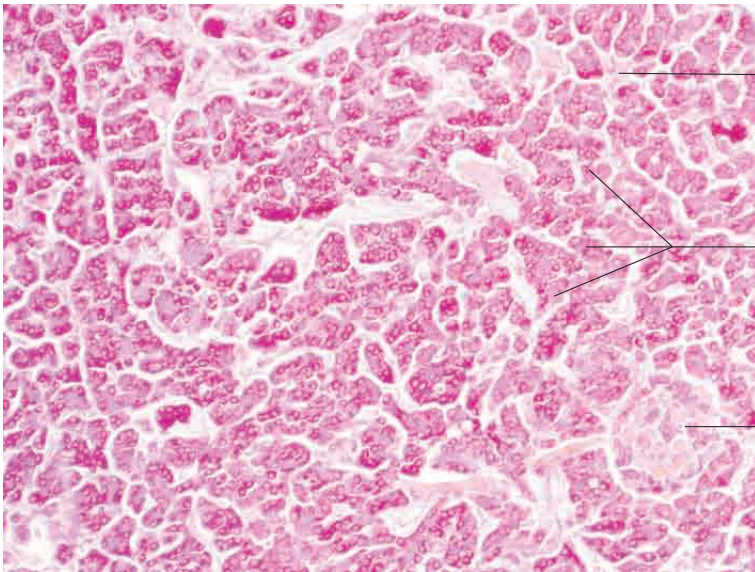
Pancreas, Pacinian corpuscle, cat. H.E. stain; x200.

# 10 Digestive system

---



## Exocrine pancreas

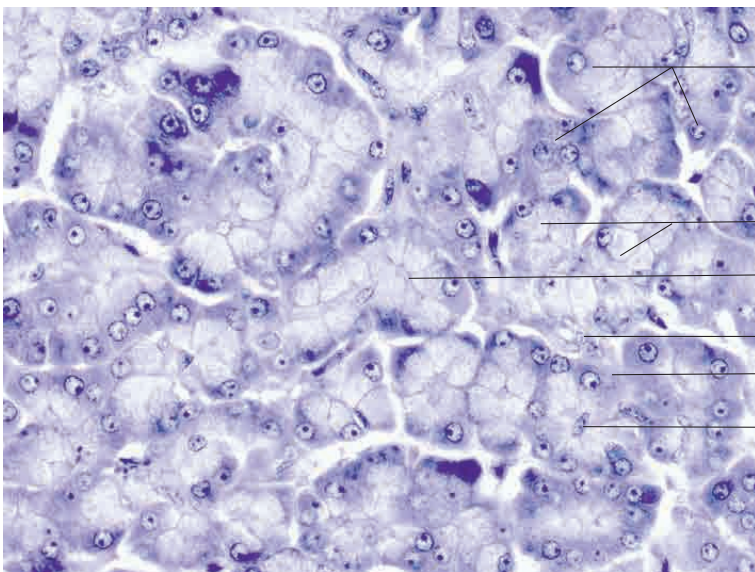


Connective tissue septa

Exocrine, tubuloacinar compound serous secretory end pieces

Endocrine portion of pancreas (islets) with capillaries

Pancreas, dog. H.E. stain; x200.



Round nuclei

Zymogen granules in apical cytoplasm

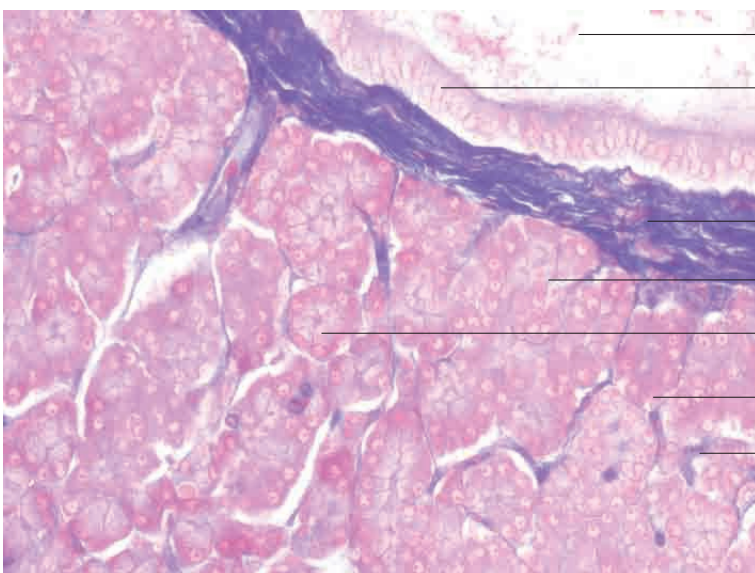
Central lumen

Intercalated duct

Basophilic staining at cell base (rough ER)

Nucleus of centroacinar cell

Pancreas, dog.  
Iron haematoxylin stain; x400.



Lumen of excretory duct with secretions

Stratified cuboidal to columnar epithelium of excretory duct

Connective tissue

Zymogen granules in apical cytoplasm

Central lumen

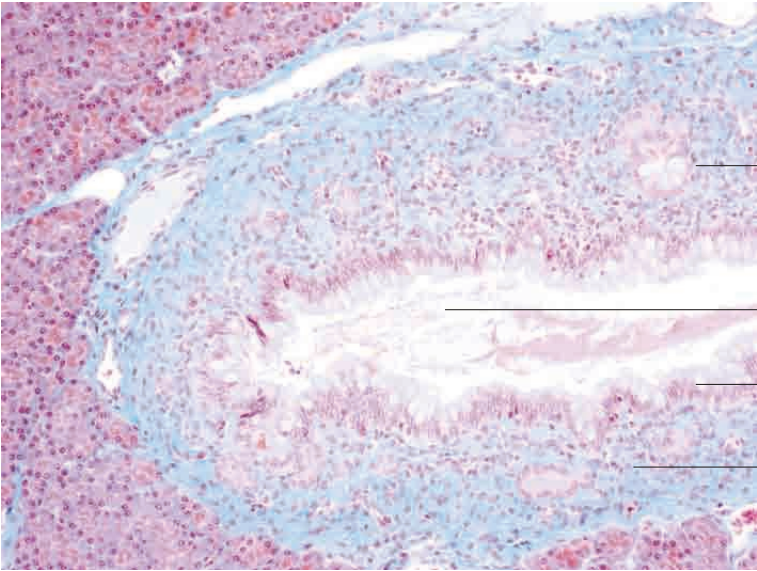
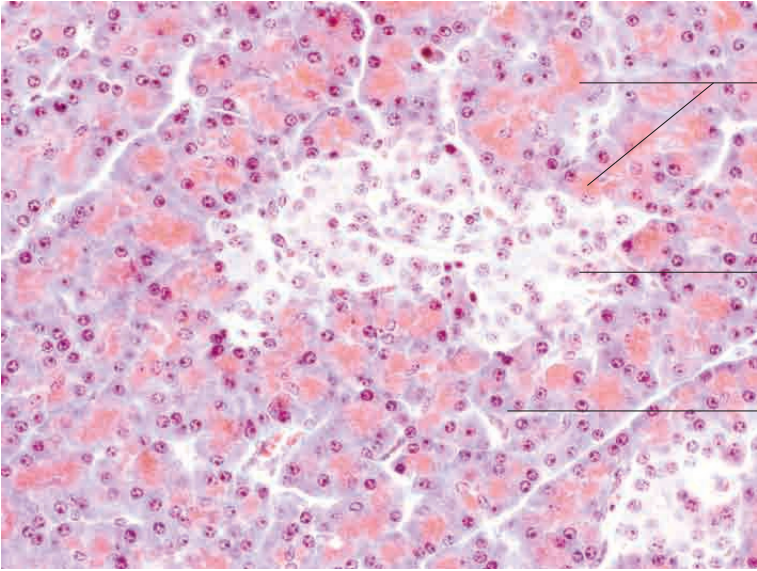
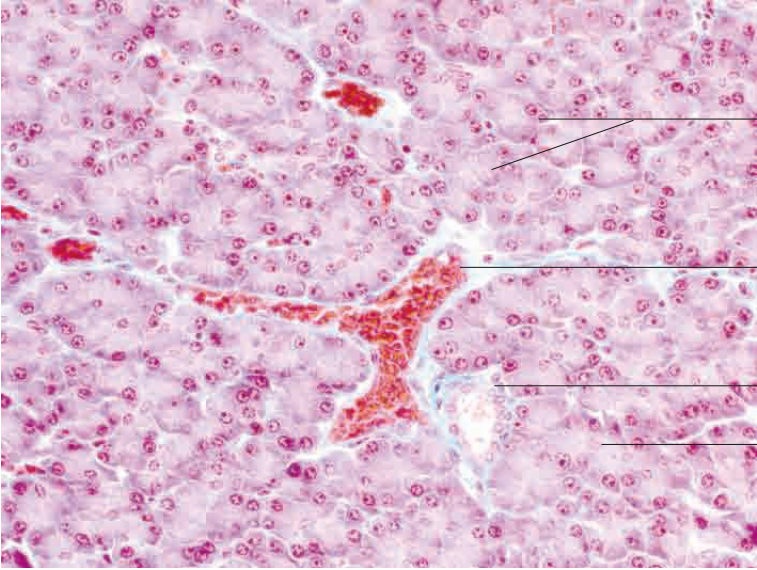
Basophilic staining at cell base (rough ER)

Loose connective tissue

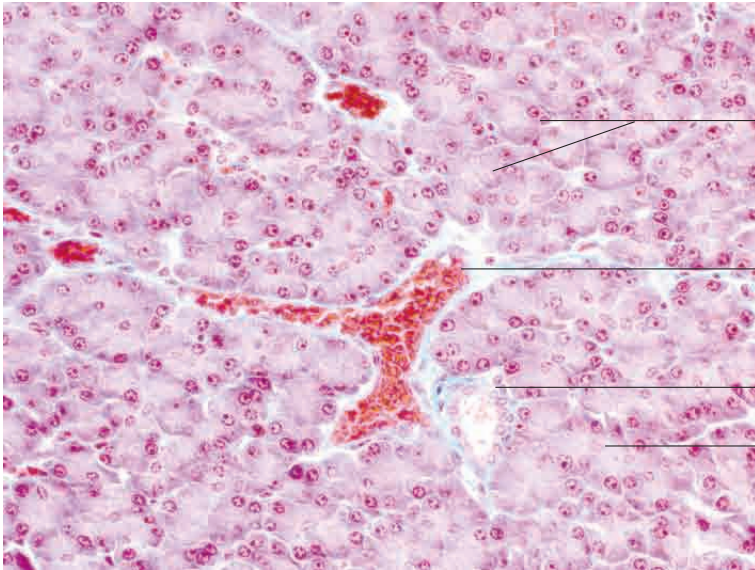
Pancreas, dog. Azan stain; x400.

10 Digestive system

---



## Exocrine pancreas



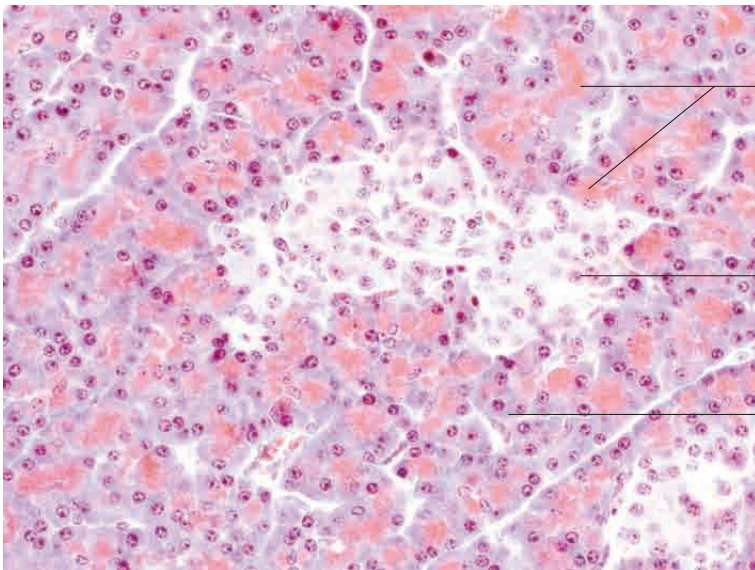
Exocrine, tubuloacinar compound serous secretory end pieces

Post-capillary venule

Intralobular duct

Nucleus of centroacinar cell

Pancreas, pig. Goldner's Masson trichrome stain; x400.

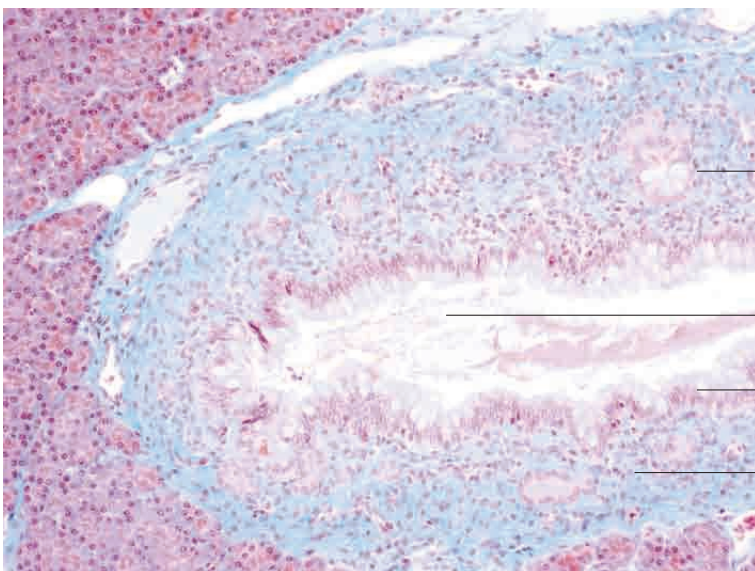


Zymogen granules in apical cytoplasm

Endocrine portion of pancreas (islets)

Basophilic staining at cell base (rough ER)

Pancreas, pig. Goldner's Masson trichrome stain; x400.



Mucous glands

Lumen of excretory duct with secretion

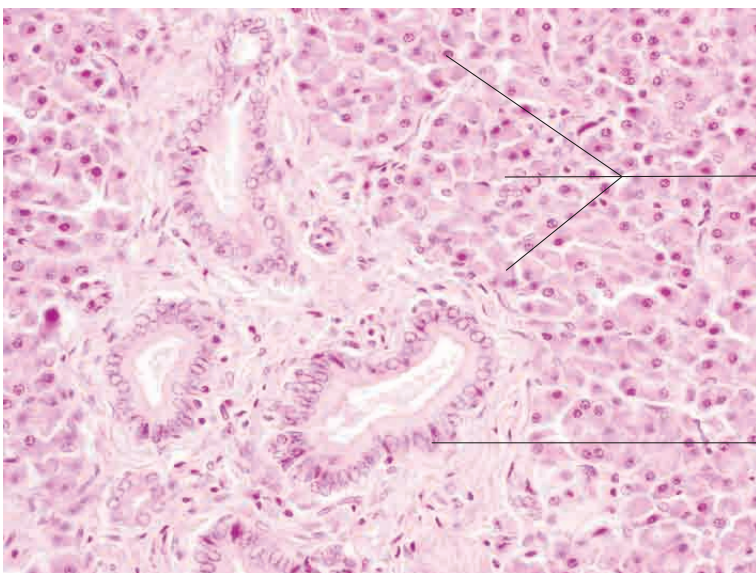
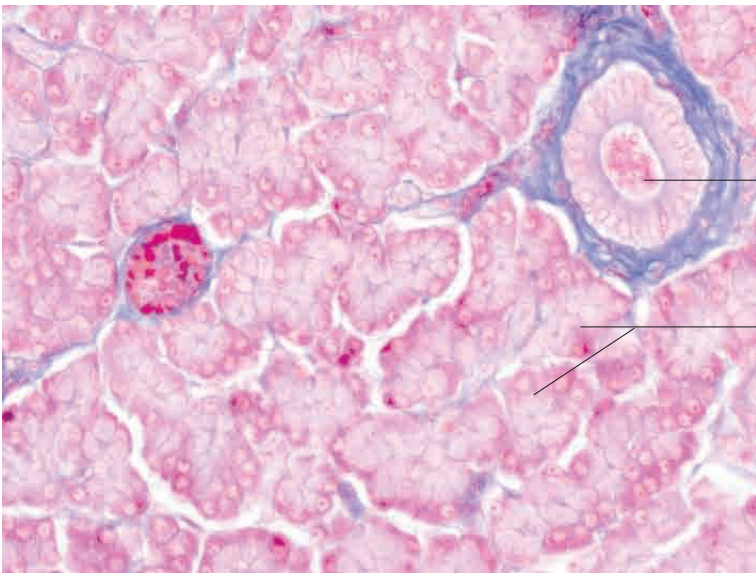
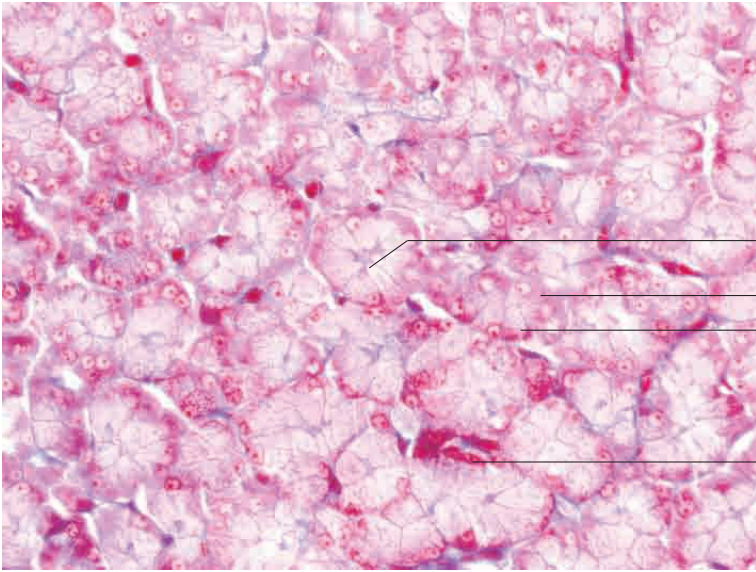
Stratified cuboidal to columnar epithelium with goblet cells

Loose connective tissue

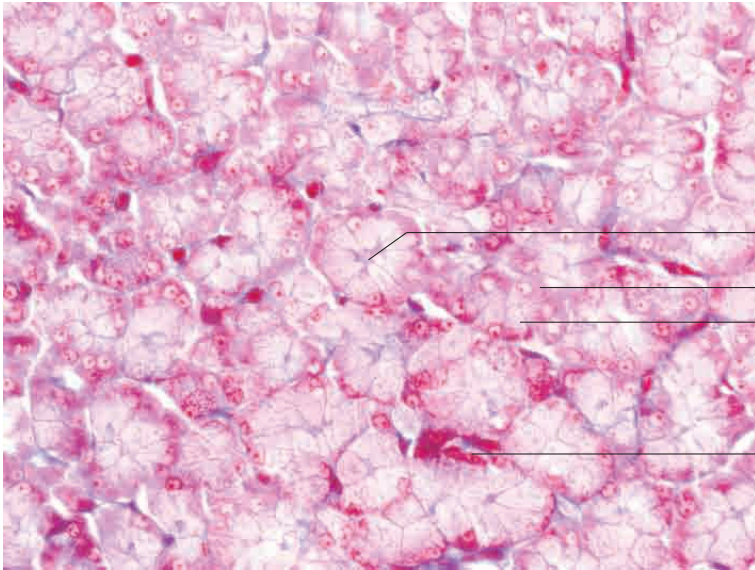
Pancreas, pig. Goldner's Masson trichrome stain; x200.

# 10 Digestive system

---



## Exocrine pancreas



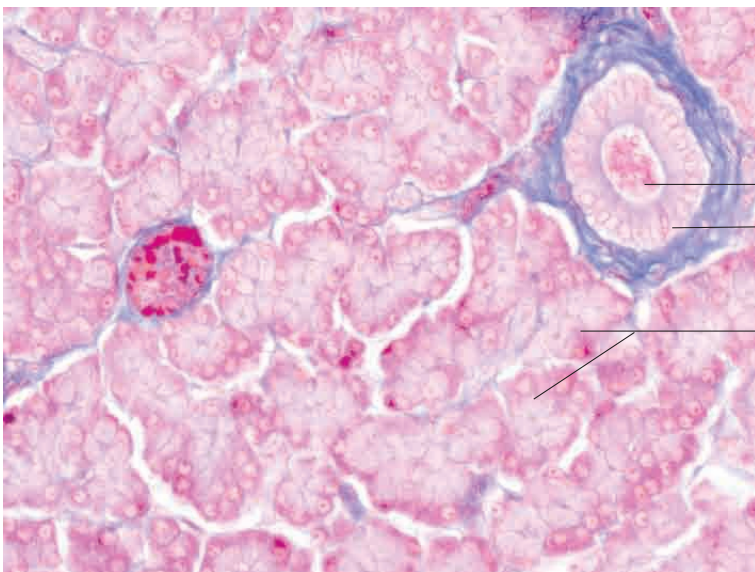
Central lumen

Basophilia at cell base (rough ER)

Zymogen granules in apical cytoplasm

Intercalated duct

Pancreas, ox. Azan stain; x400.

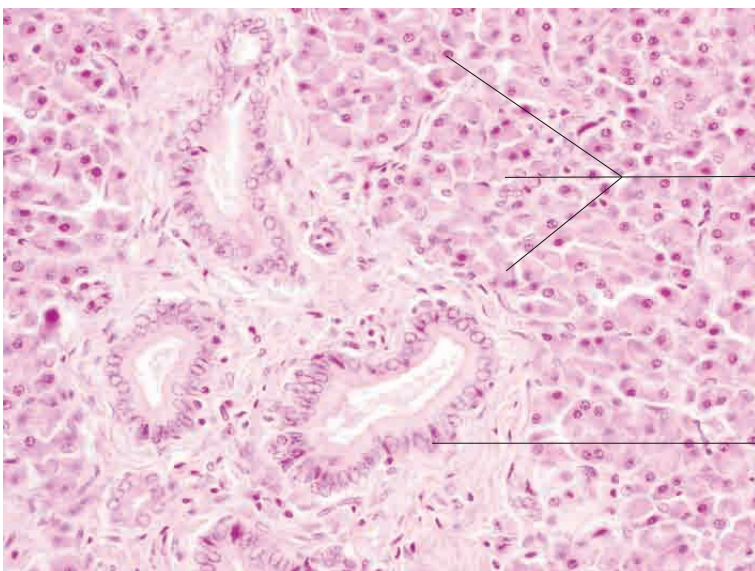


Lumen of secretory duct

Cuboidal to columnar epithelium of secretory duct

Exocrine, tubuloacinar compound serous secretory end piece

Pancreas, ox. Azan stain; x400.



Exocrine, tubuloacinar compound serous secretory end pieces

Cuboidal to columnar epithelium of secretory duct

Pancreas, horse. H.E. stain; x200.