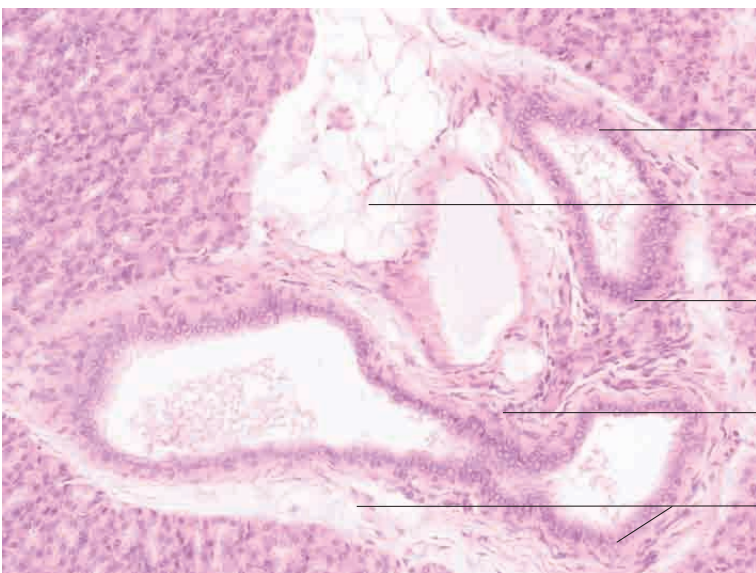
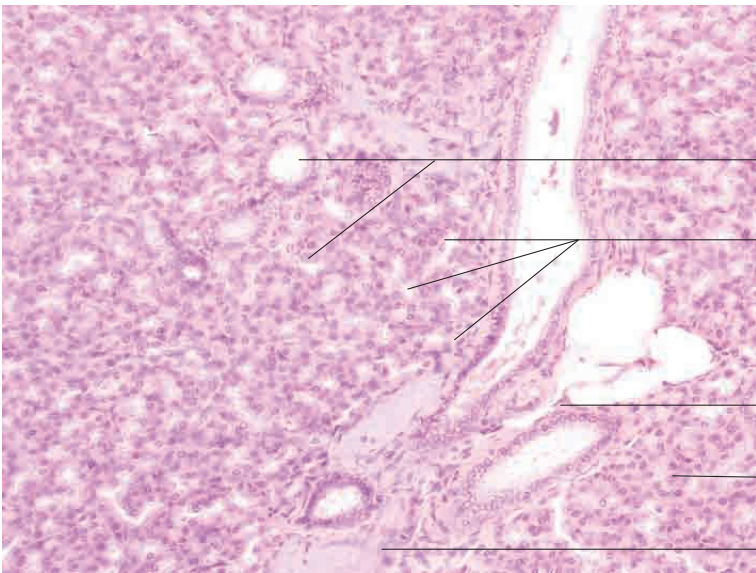
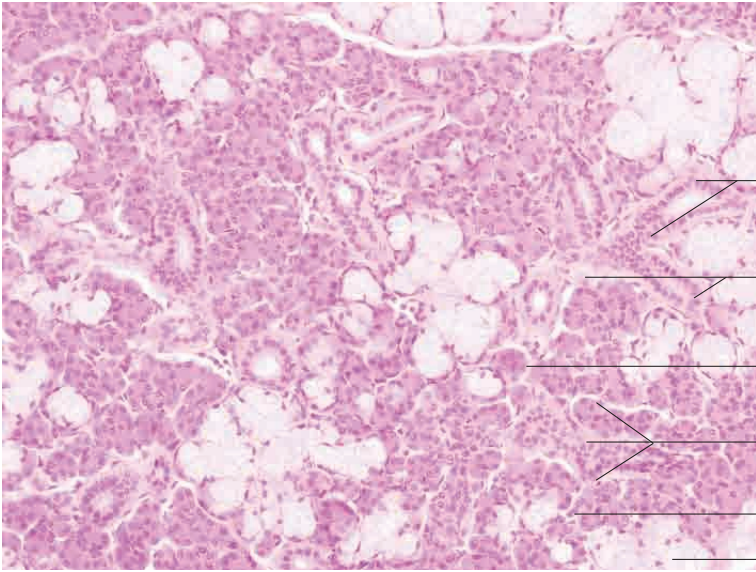
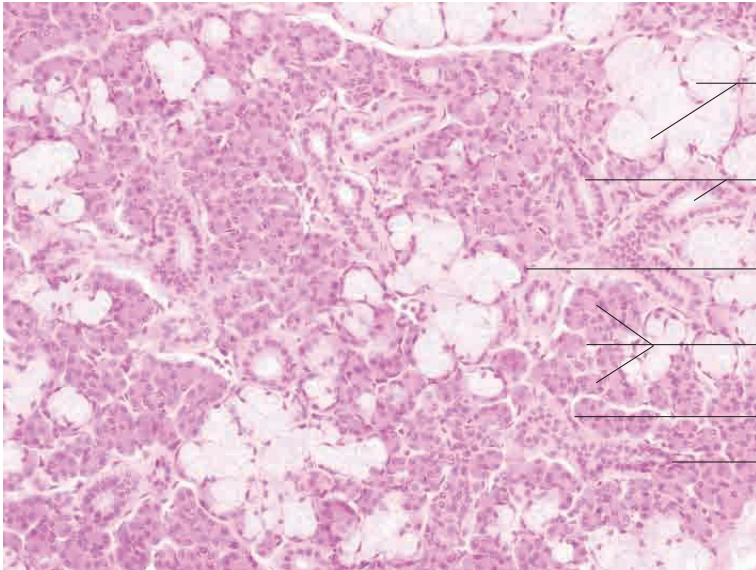


10 Digestive system



Parotid gland



Mucous end pieces

Intralobular secretory ducts with simple columnar epithelium

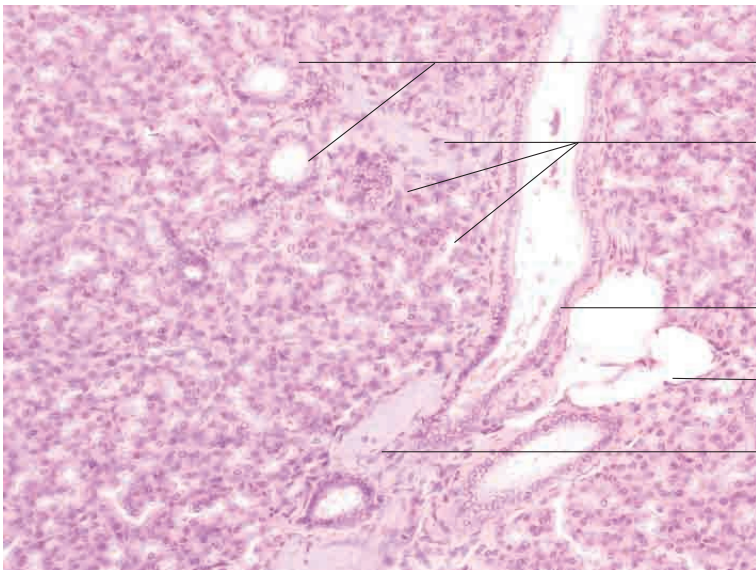
Mixed end piece

Serous end pieces

Loose connective tissue

Transition from intercalated to secretory duct

Parotid gland, dog. H.E. stain; x250.



Intralobular secretory ducts with simple columnar epithelium

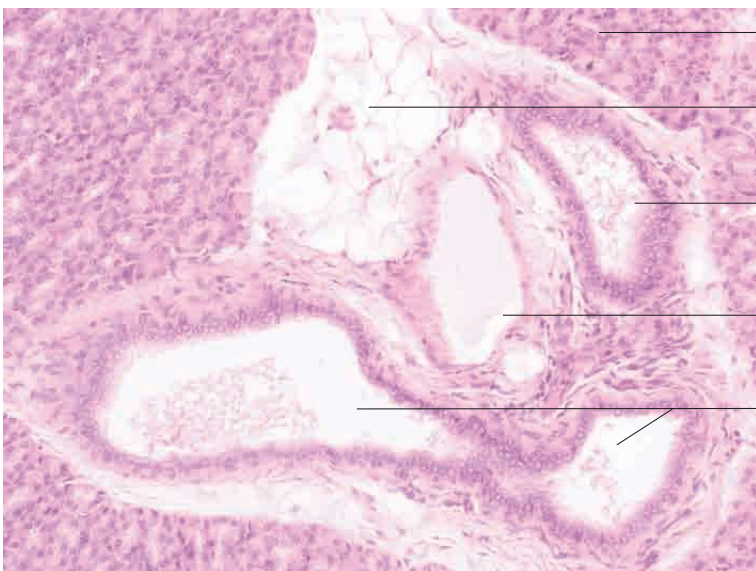
Serous end pieces

Interlobular secretory ducts with simple to bilayered columnar epithelium

Adipose tissue

Venule

Parotid gland, sheep. H.E. stain; x200.



Serous end pieces

Adipose tissue

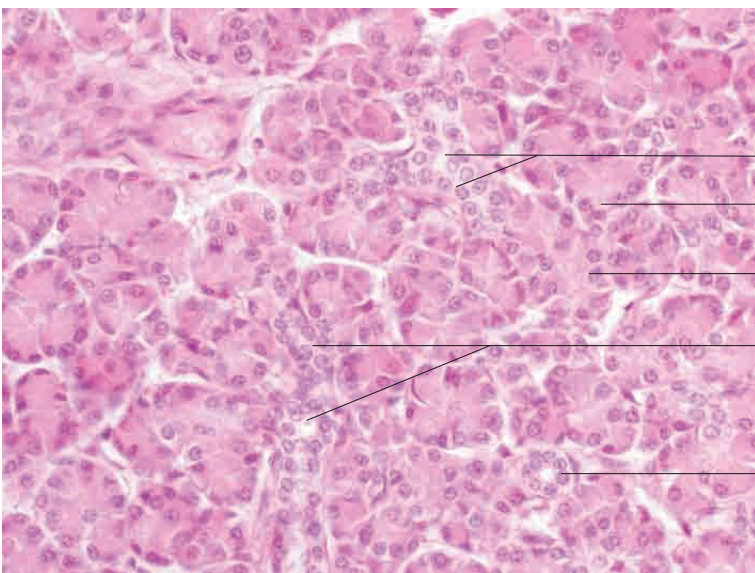
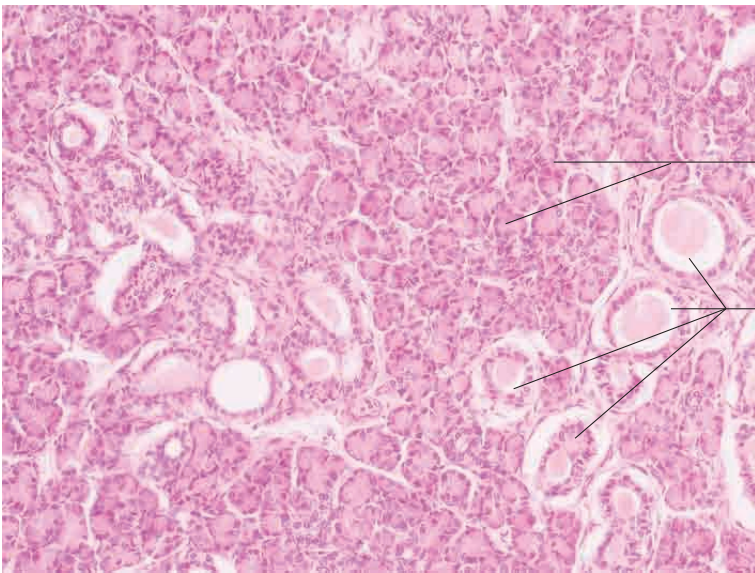
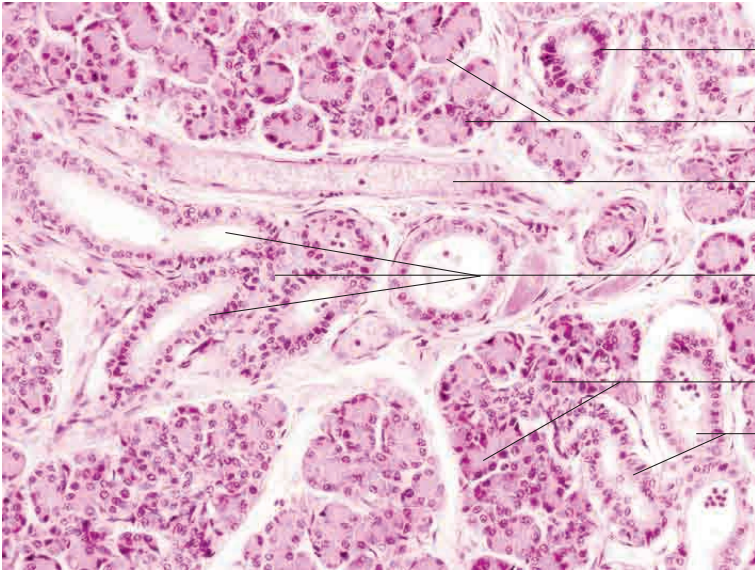
Interlobular secretory ducts with simple to bilayered columnar epithelium

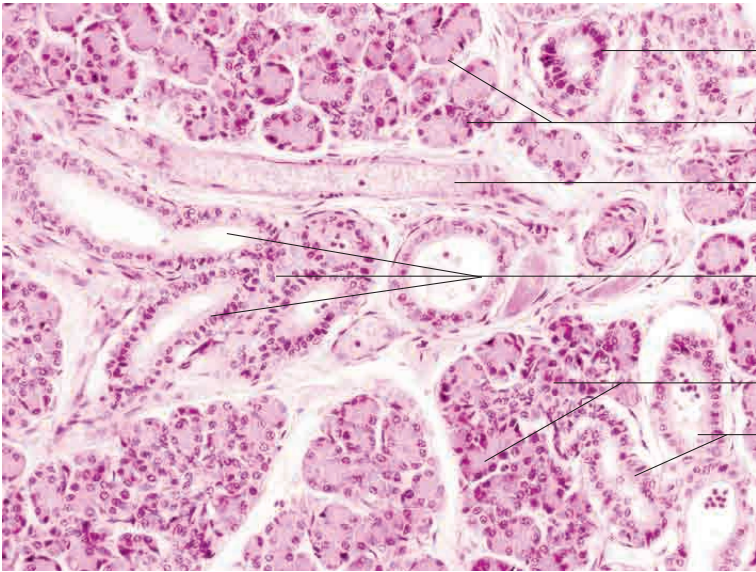
Venule

Interlobular secretory duct

Parotid gland, sheep. H.E. stain; x200.

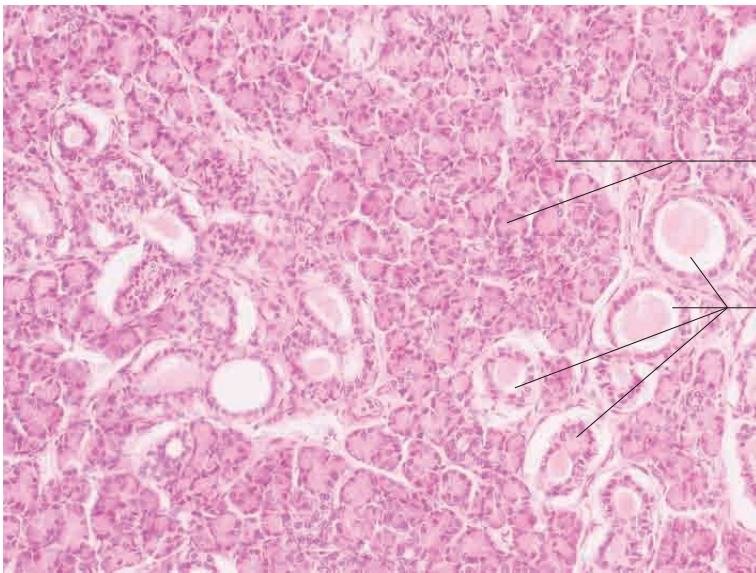
10 Digestive system





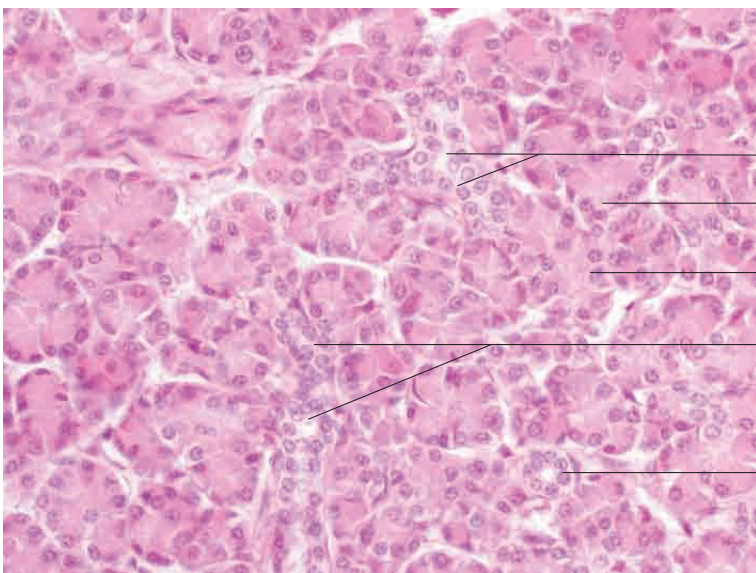
- Intralobular secretory ducts with simple columnar epithelium
- Serous end pieces
- Venule
- Interlobular secretory ducts with simple to bilayered columnar epithelium
- Serous end pieces
- Intralobular secretory ducts with simple columnar epithelium

Parotid gland, horse. H.E. stain; x200.



- Serous end pieces
- Intralobular secretory ducts with simple columnar epithelium

Parotid gland, horse. H.E. stain; x200.



- Intercalated duct with cuboidal epithelium
- Serous end pieces
- Serous end pieces
- Intercalated duct with cuboidal epithelium
- Intercalated duct with cuboidal epithelium

Parotid gland, horse. H.E. stain; x400.