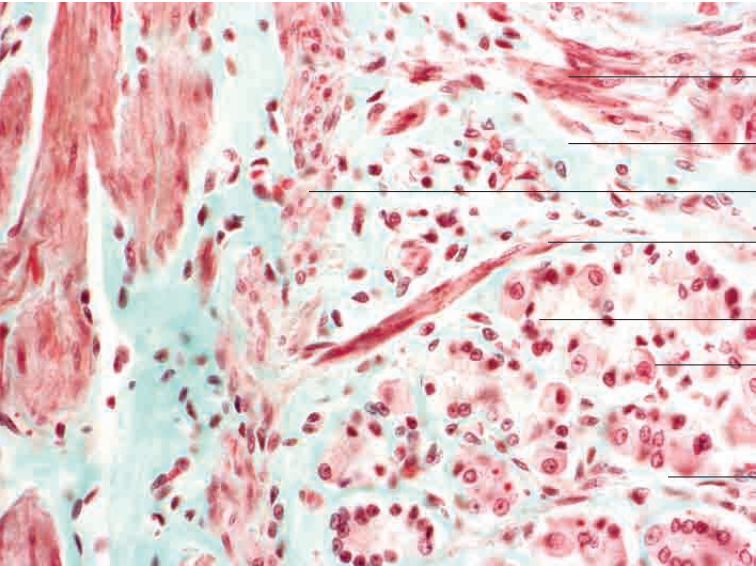
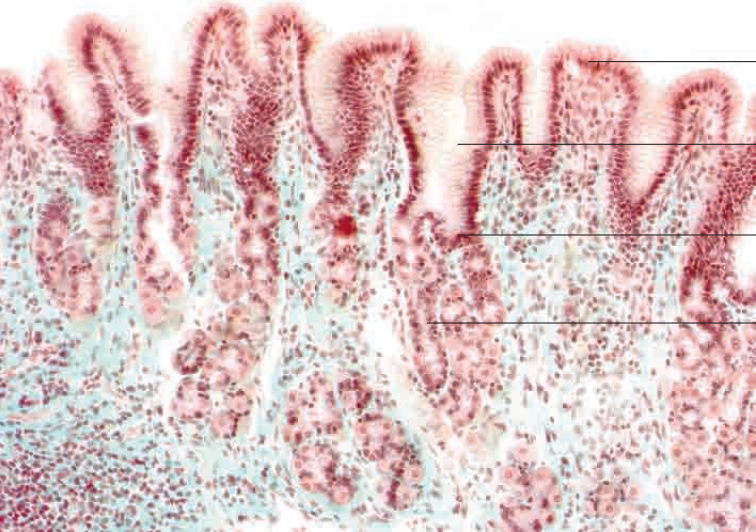
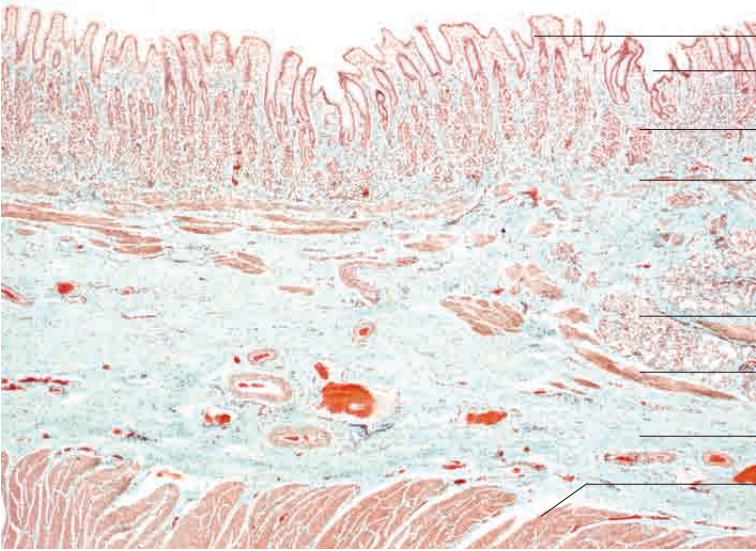
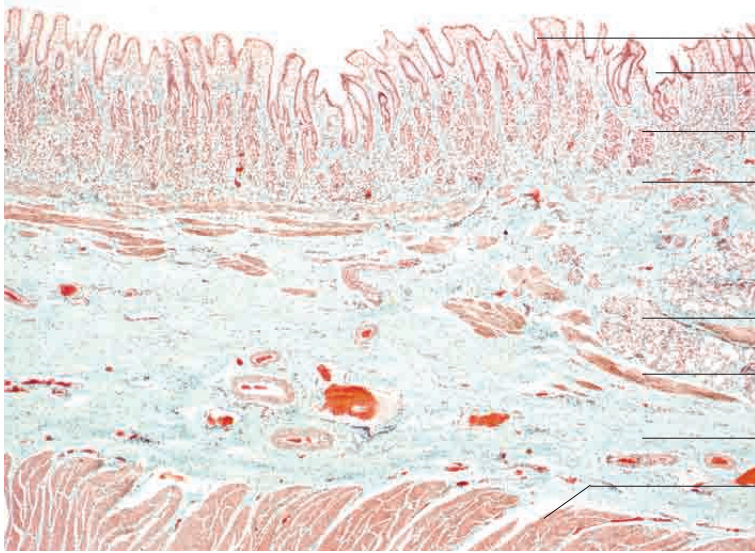


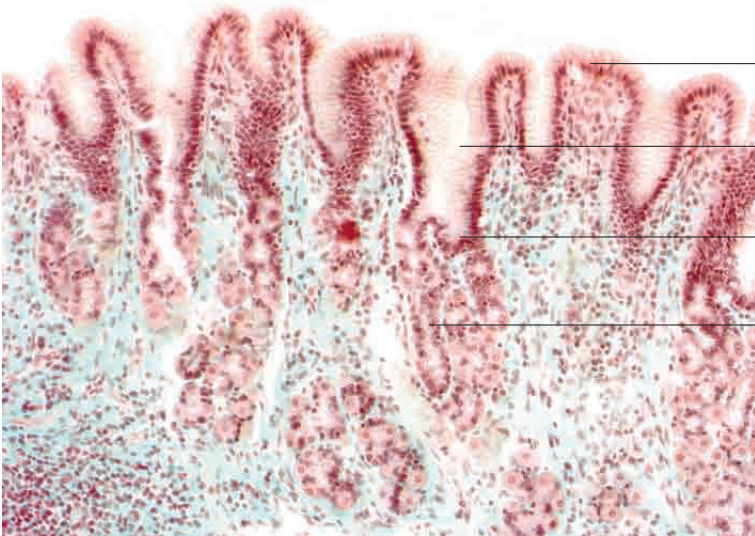
10 Digestive system



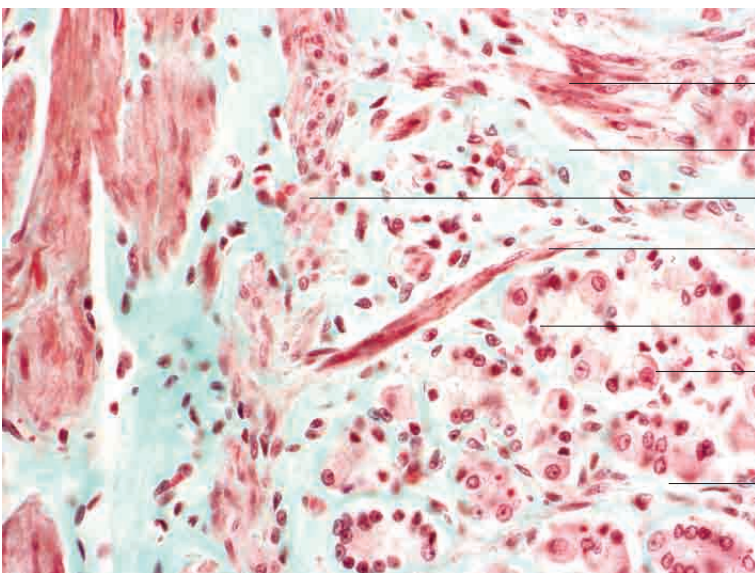
Cardiac gland region



- Areolae gastricae
 - Gastric pits
 - Coiled gastric glands
 - Lamina propria mucosae with discontinuous lamina muscularis mucosae
 - Mixed glands
 - Smooth muscle fibres bundles
 - Tela submucosa with vessels
 - Tunica muscularis (smooth muscle)
- Cardiac gland region, dog. Goldner's Masson trichrome stain; x40.

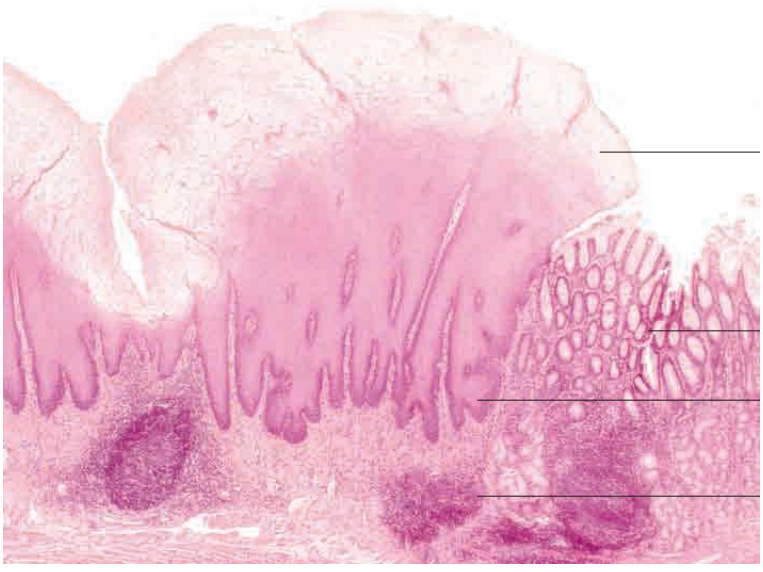
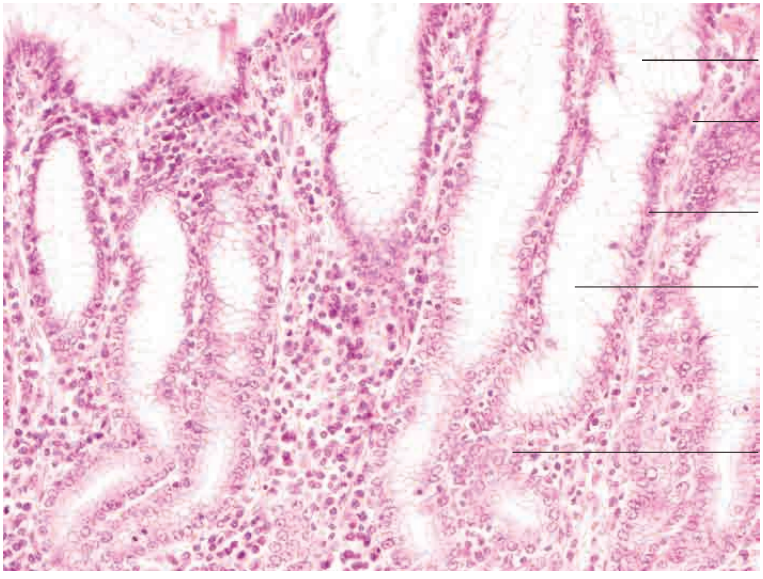


- Simple columnar epithelium
 - Gastric pits (flat-cut section of epithelium)
 - Base of gastric pits with branching of tubular gastric glands
 - Proximal portion of branched, coiled tubular gastric glands, isthmus region with neck cells and isolated parietal cells
- Cardiac gland region, dog. Goldner's Masson trichrome stain; x180.

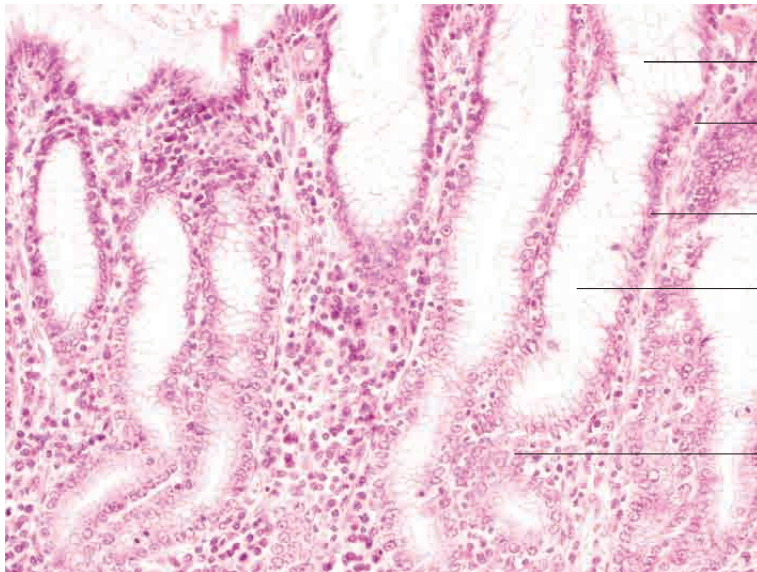


- Smooth muscle in lamina muscularis mucosae
 - Lamina propria mucosae
 - Lamina muscularis mucosae
 - Smooth muscle
 - Coiled tubular glands with chief cells
 - Parietal cell
 - Lamina propria mucosae
- Cardiac gland region, dog. Goldner's Masson trichrome stain; x400.

10 Digestive system



Cardiac gland region



Flat section of glandular epithelial cells

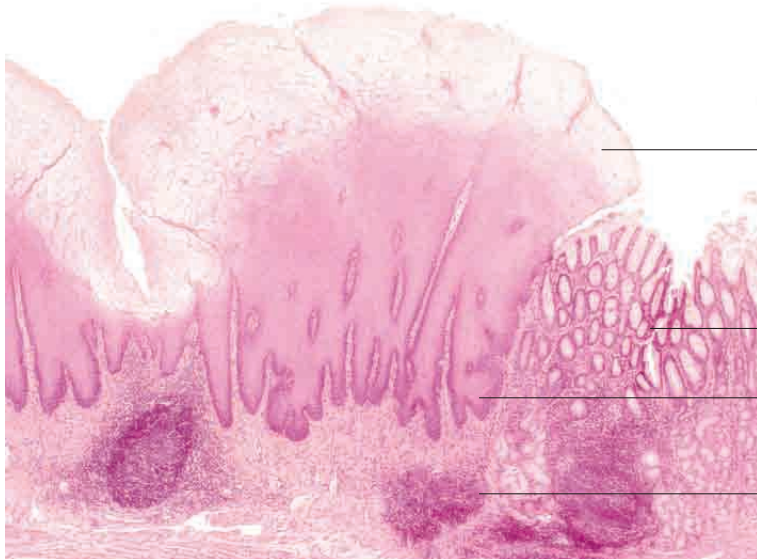
Lamina propria mucosae

Nuclei of simple columnar glandular epithelial cells

Lumen of gastric pit

Flat section of glandular epithelial cells

Cardiac gland region, dog. H.E. stain; x200.



Stratified, weakly keratinised squamous epithelium with dilated epithelial cells in stratum corneum

Cardiac glands (oblique section) with gastric pits

Deep layers of stratified epithelium with marked papillation

Lymphoid follicle

Diverticulum ventriculi, pig. H.E. stain; x40.



Stratified, weakly keratinised squamous epithelium with dilated epithelial cells in stratum corneum

Deep layers of stratified epithelium with marked papillation

Papillary body

Diverticulum ventriculi, pig. H.E. stain; x40.