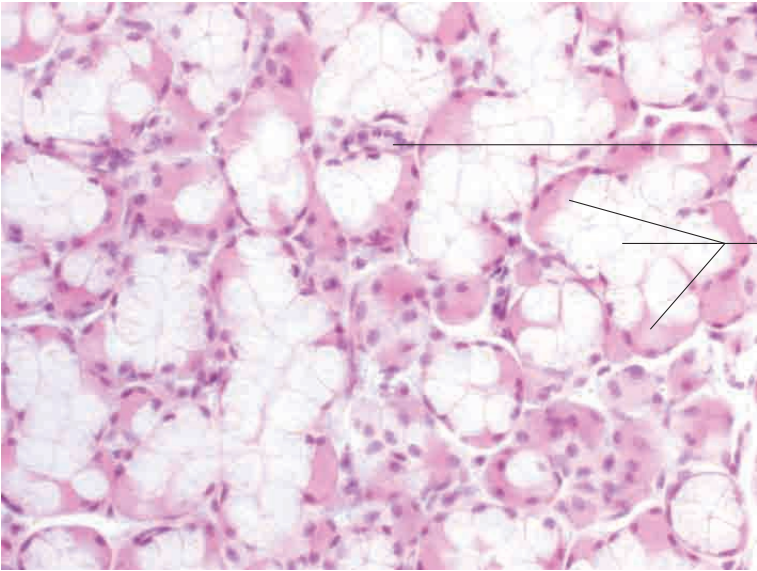
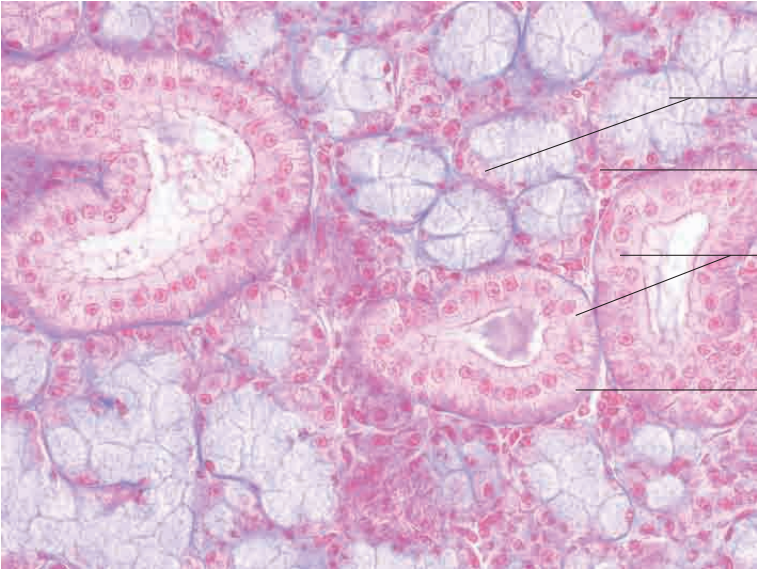
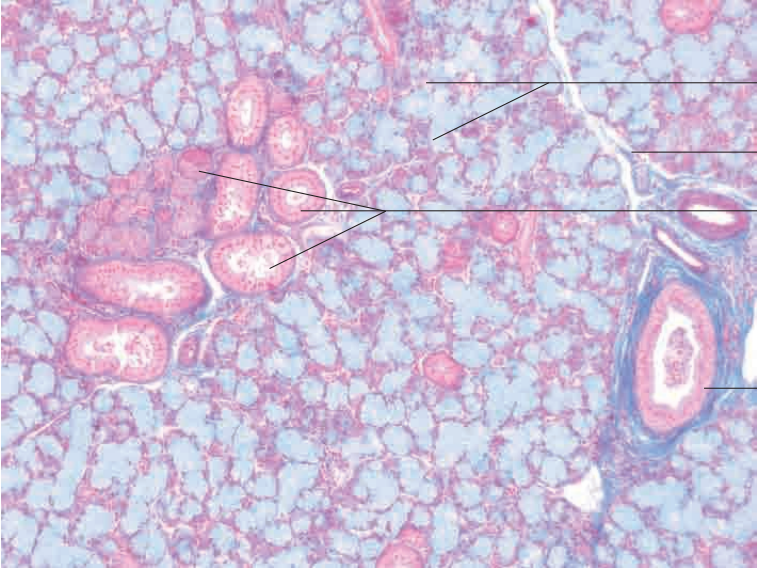
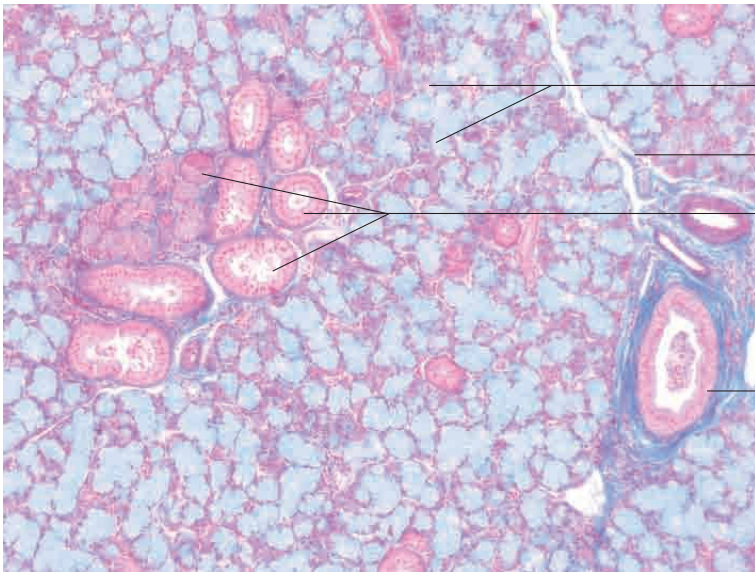


10 Digestive system

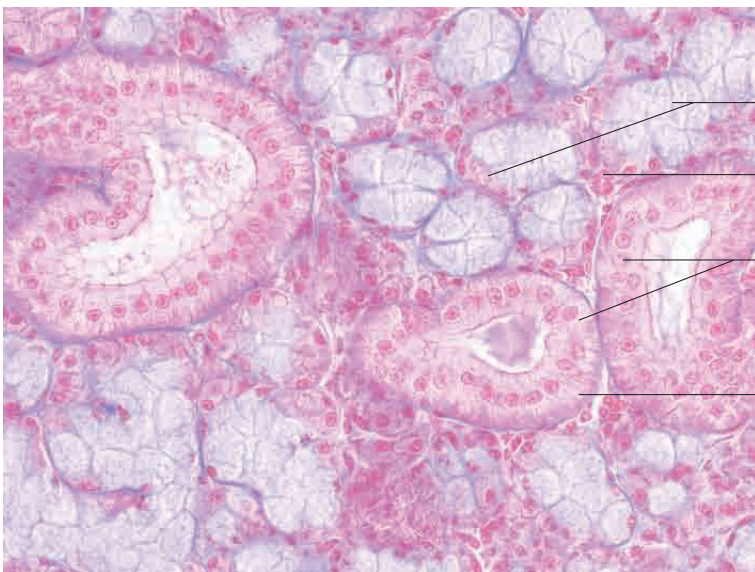


Sublingual gland



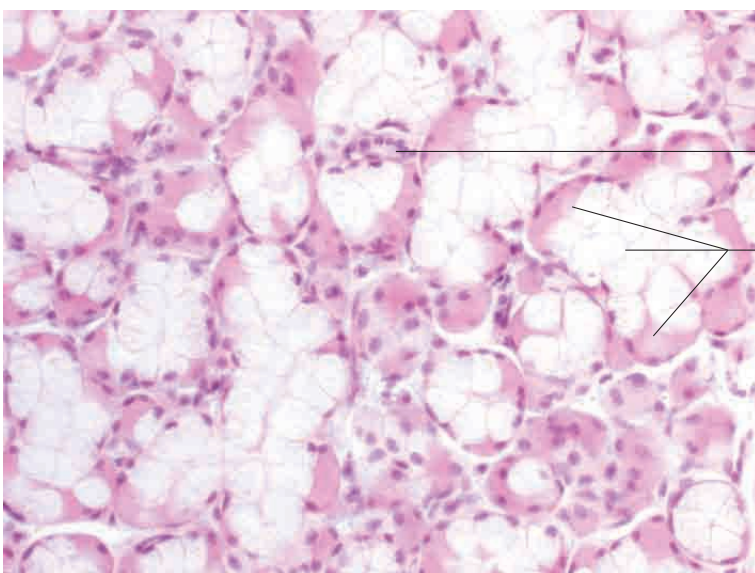
- Mixed end piece with mucous and serous components
- Loose interstitial connective tissue
- Interlobular secretory ducts with adjacent intralobular secretory ducts
- Main duct with stratified cuboidal epithelium, goblet cells and smooth muscle

Sublingual gland, ox. Azan stain; x120.



- Mixed end piece with mucous and serous components
- Loose interstitial connective tissue
- Secretory ducts with prominent basal striation (striated duct)
- Basal striation

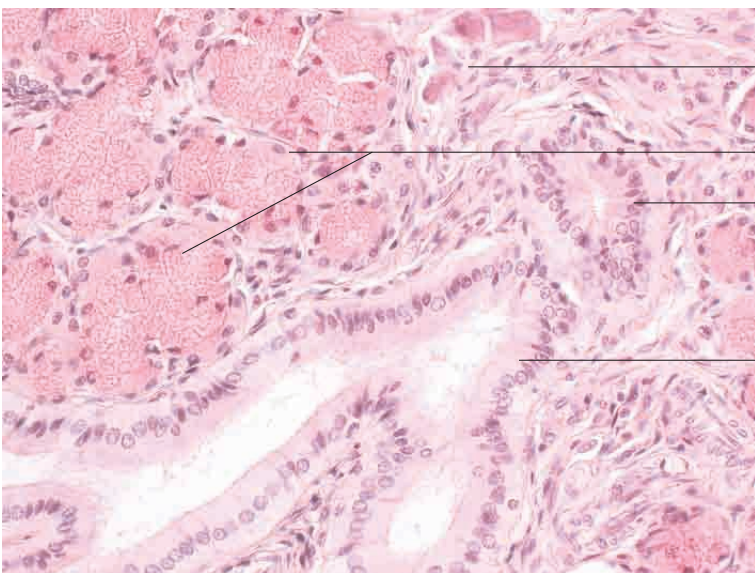
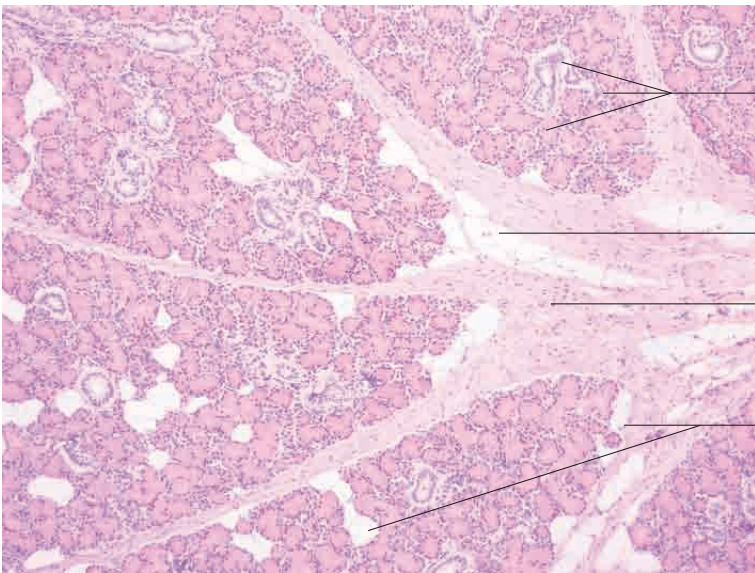
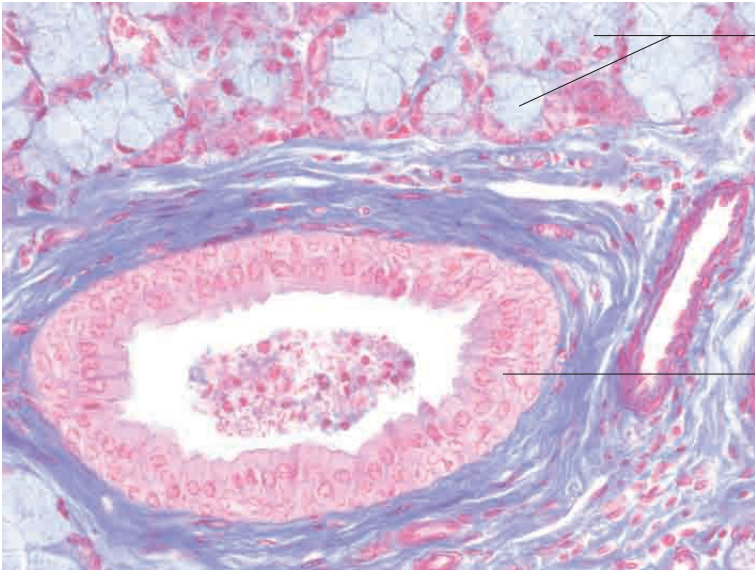
Sublingual gland, ox. Azan stain; x400.

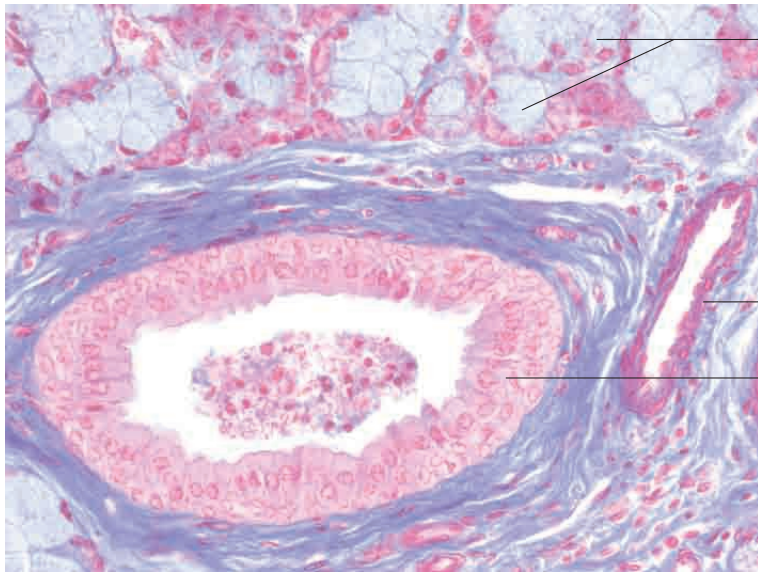


- Intercalated duct
- Mixed end piece with mucous and serous components

Sublingual gland, ox. H.E. stain; x400.

10 Digestive system



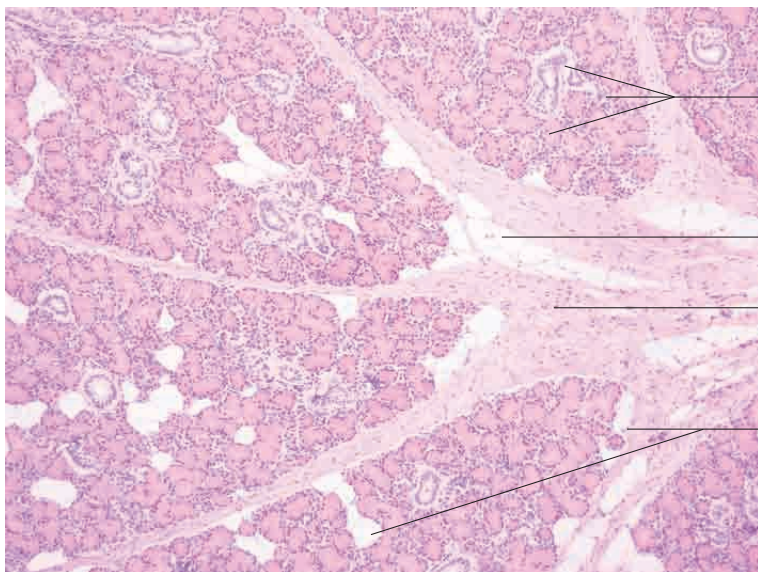


Mixed glands

Vein

Main duct with stratified cuboidal epithelium, goblet cells and smooth muscle and intraluminal secretion

Sublingual gland, ox. Azan stain; x400.



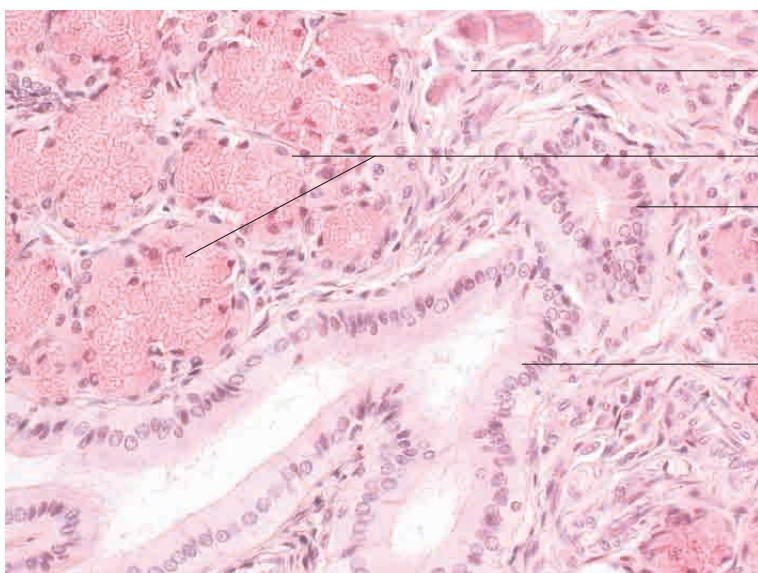
Mixed glands with intralobular secretory ducts, secretion stained red

Interlobular adipose tissue

Interlobular connective tissue

Intralobular adipose tissue

Sublingual gland, pig. Mucicarmine stain; x120.



Autonomic ganglion with nerve fibre bundle

Mixed glands, secretion stained

Interlobular secretory duct (cross section)

Interlobular secretory duct (longitudinal section)

Sublingual gland, pig. Mucicarmine stain; x400.