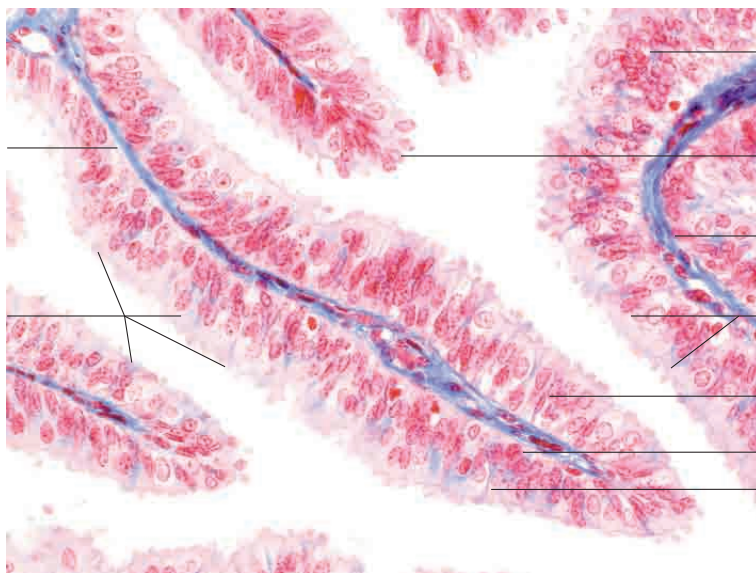
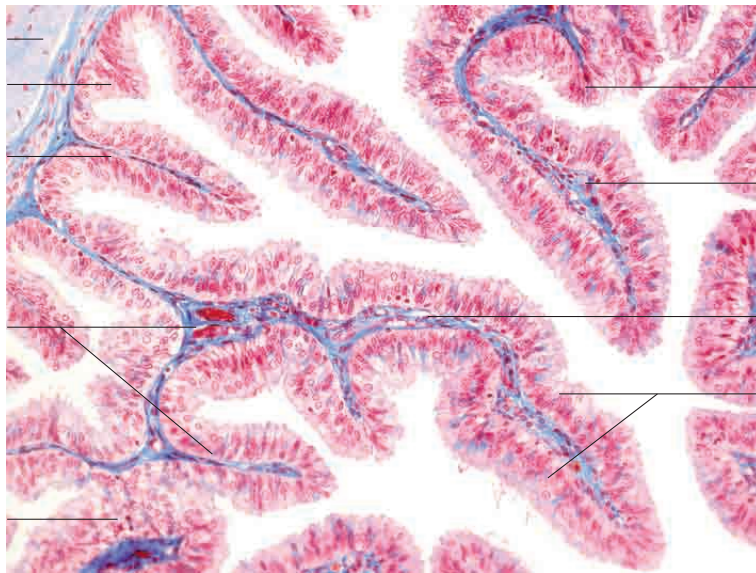
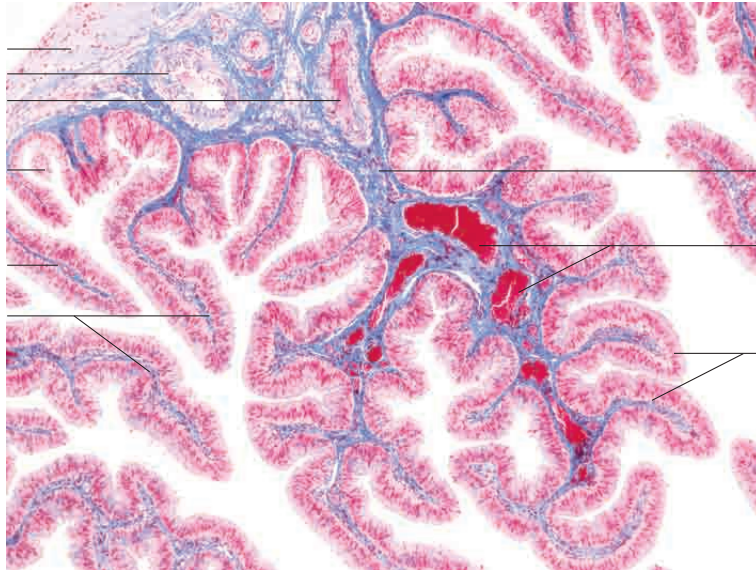
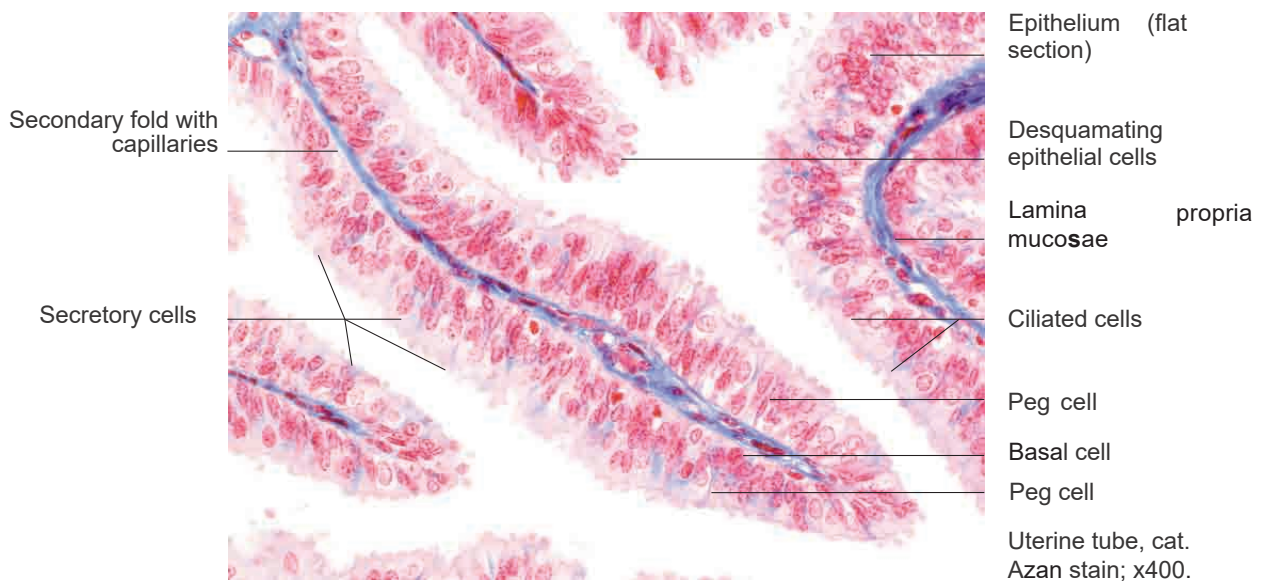
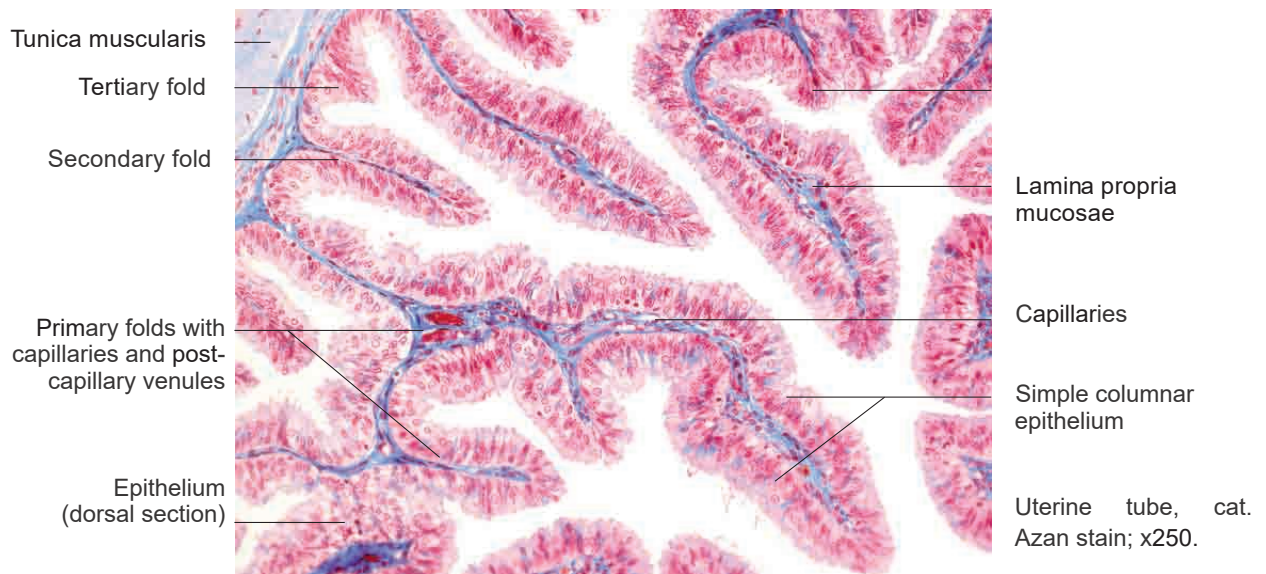
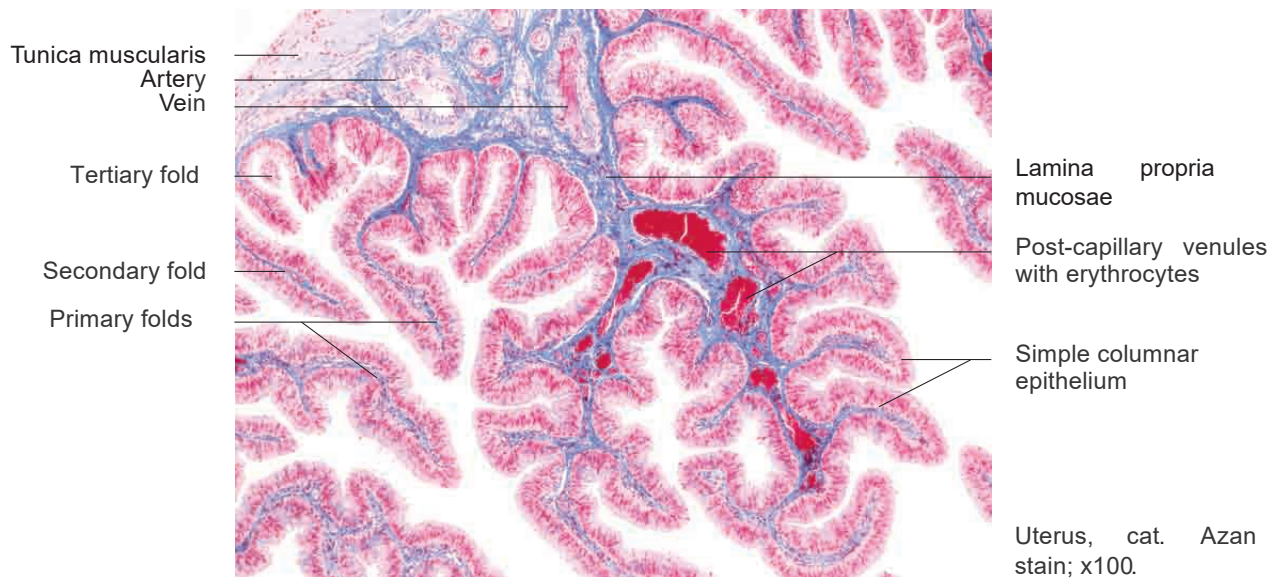


# 14 Female reproductive tract

---

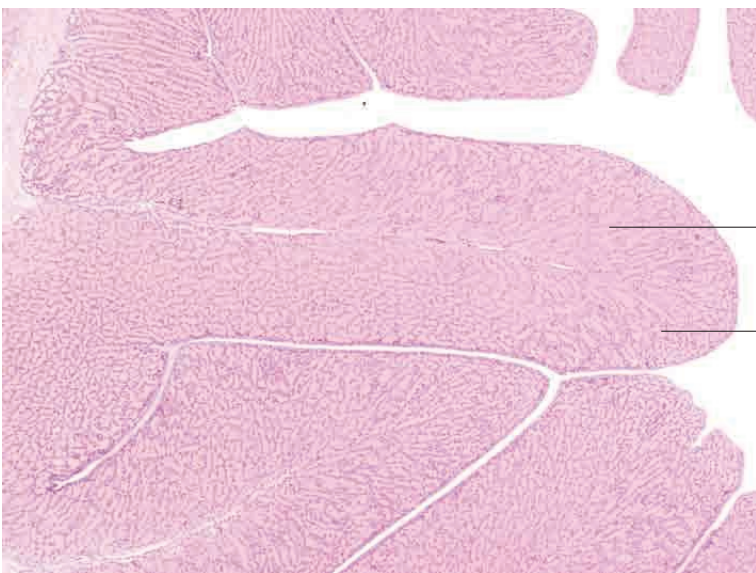
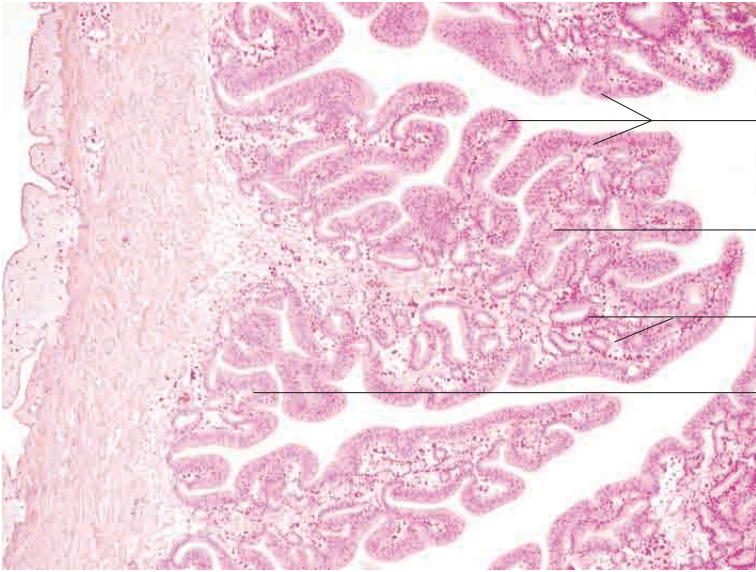


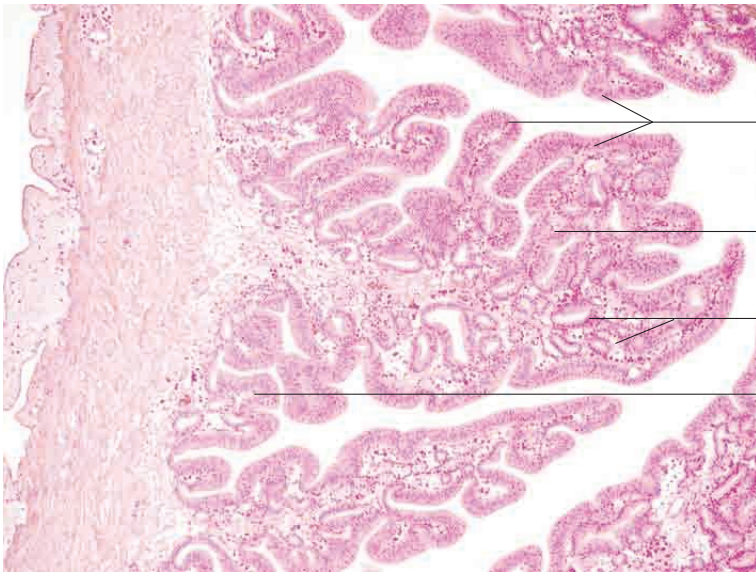
# Uterine tube



14 Female reproductive tract

---





Simple columnar epithelium

Secondary mucosal folds

Infundibular glands

Primary mucosal folds

Infundibulum, chicken. H.E. stain; x100.

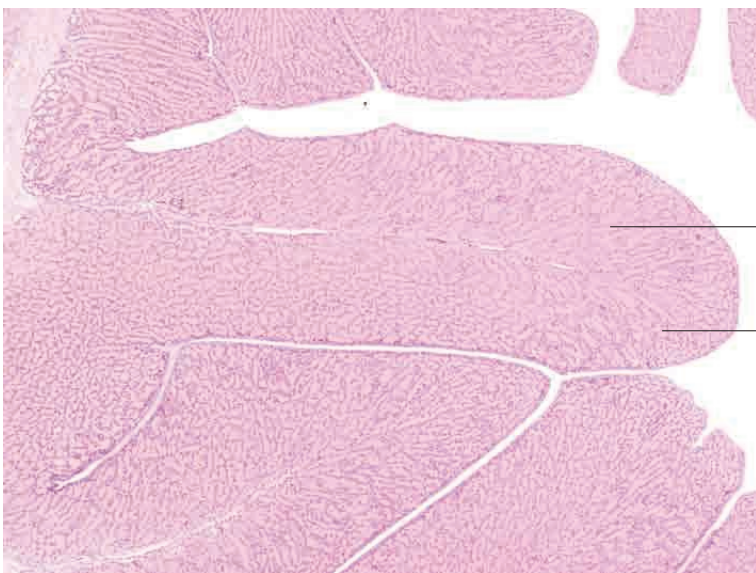


Simple columnar epithelium

Secondary mucosal folds

Tubular infundibular glands

Infundibulum, chicken. H.E. stain; x200.



Coiled, branched tubular glands in lamina propria (glandulae magni)

Mucosal folds lacking secondary folds

Magnum, chicken. H.E. stain; x40.