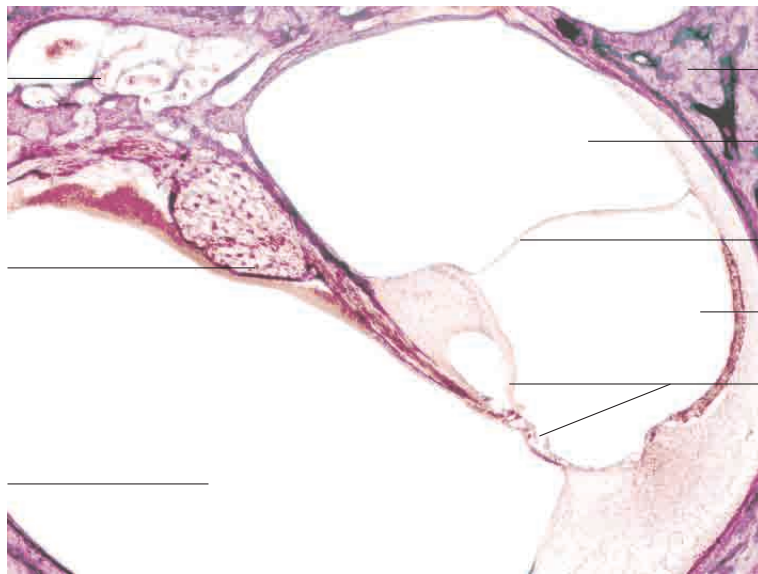
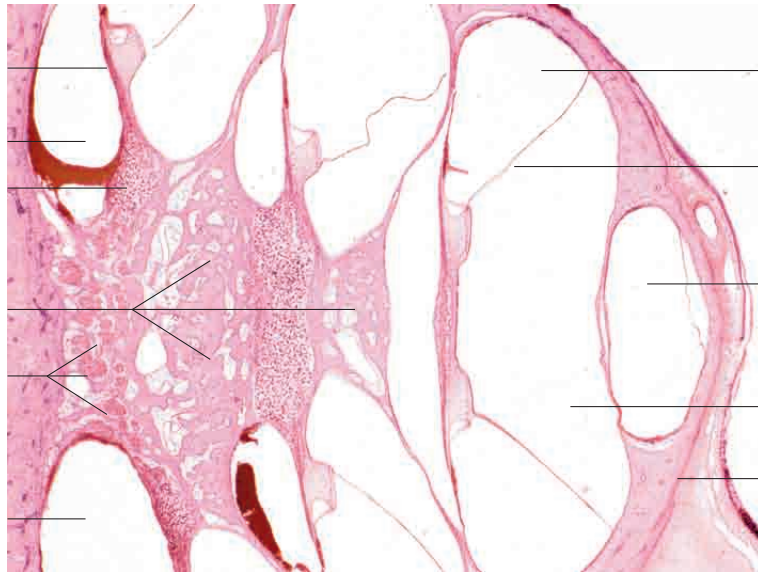
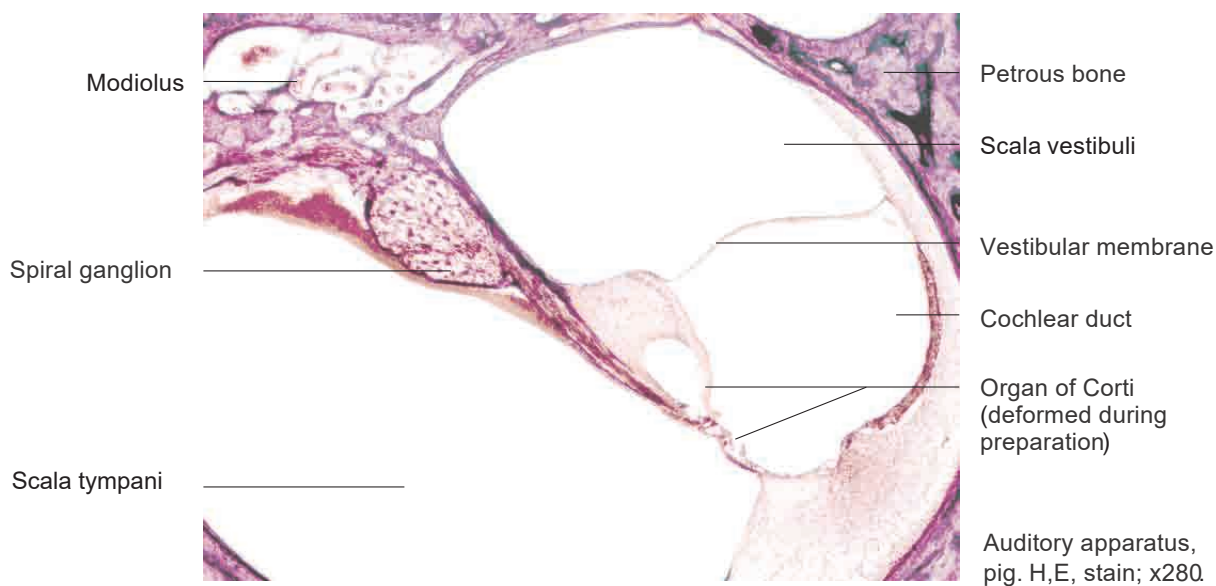
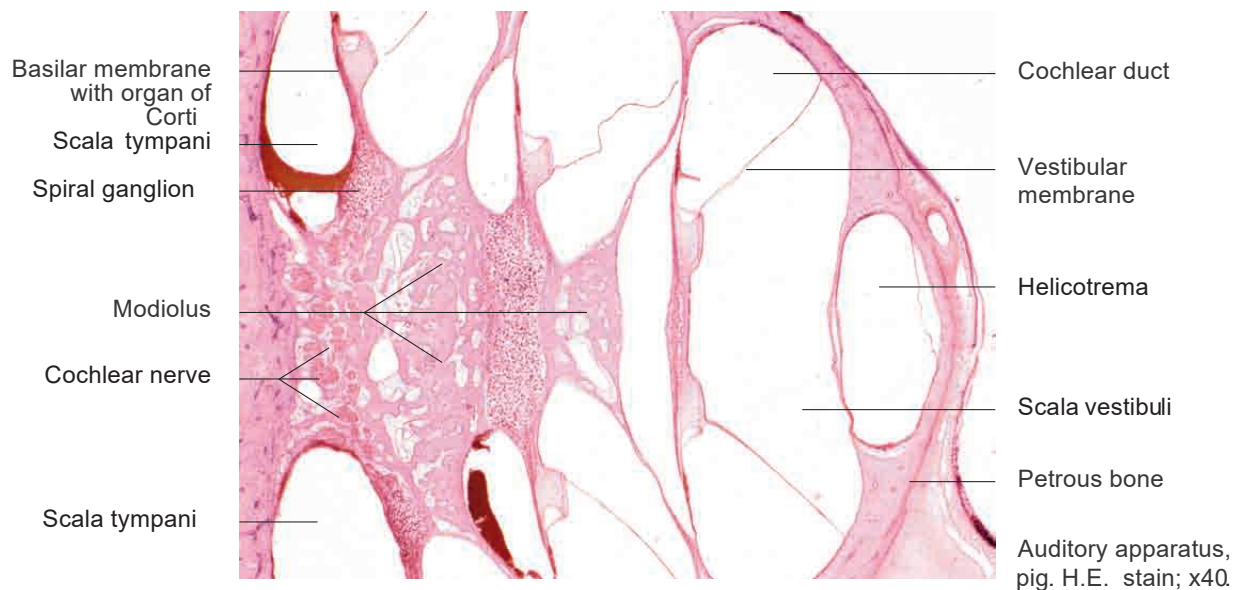


# 16 Receptors and sense organs

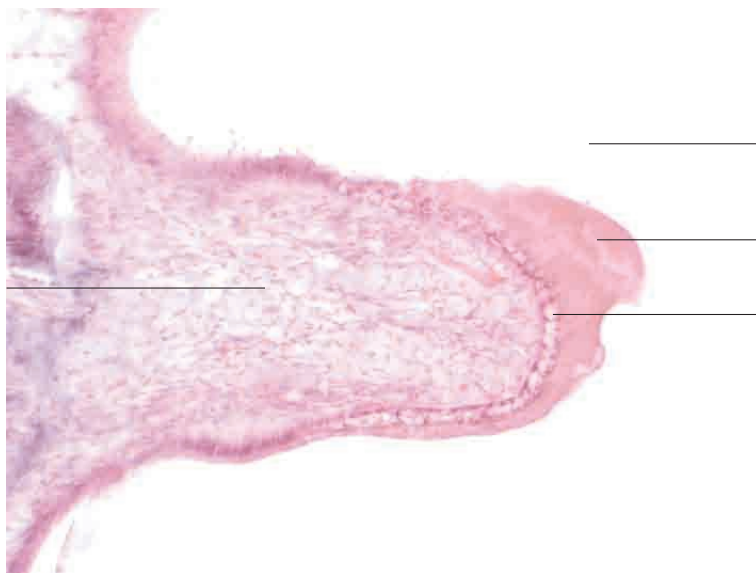
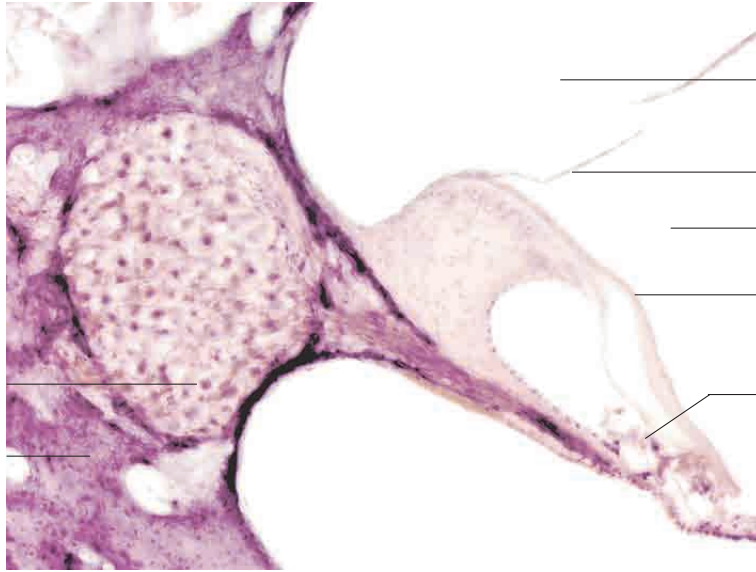
---

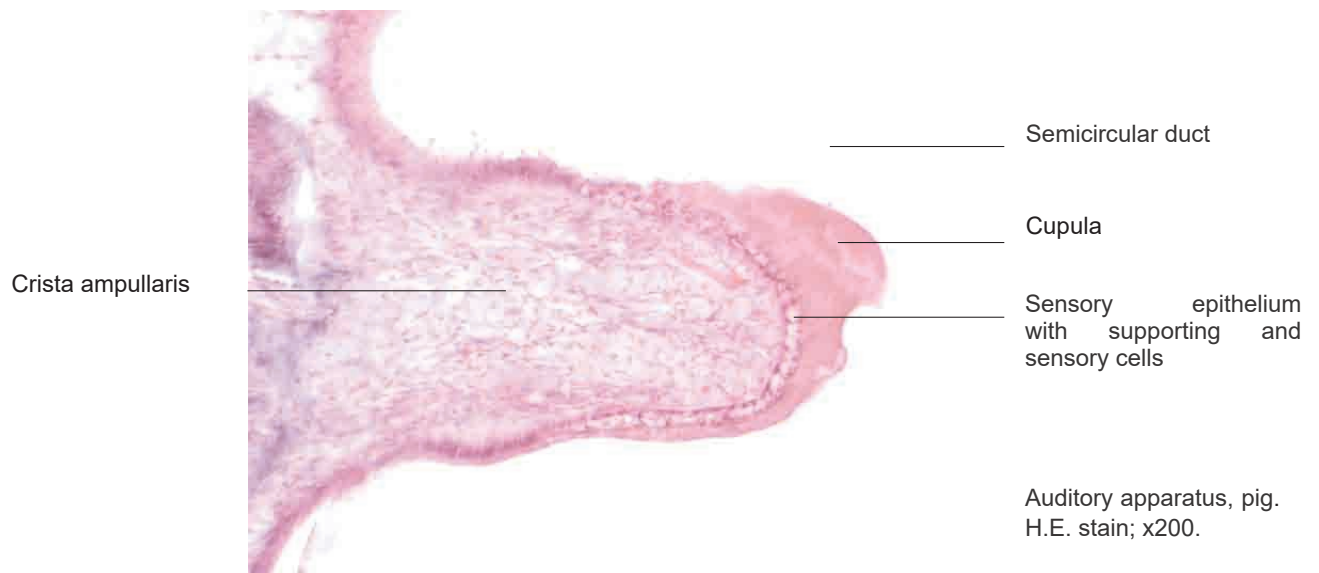
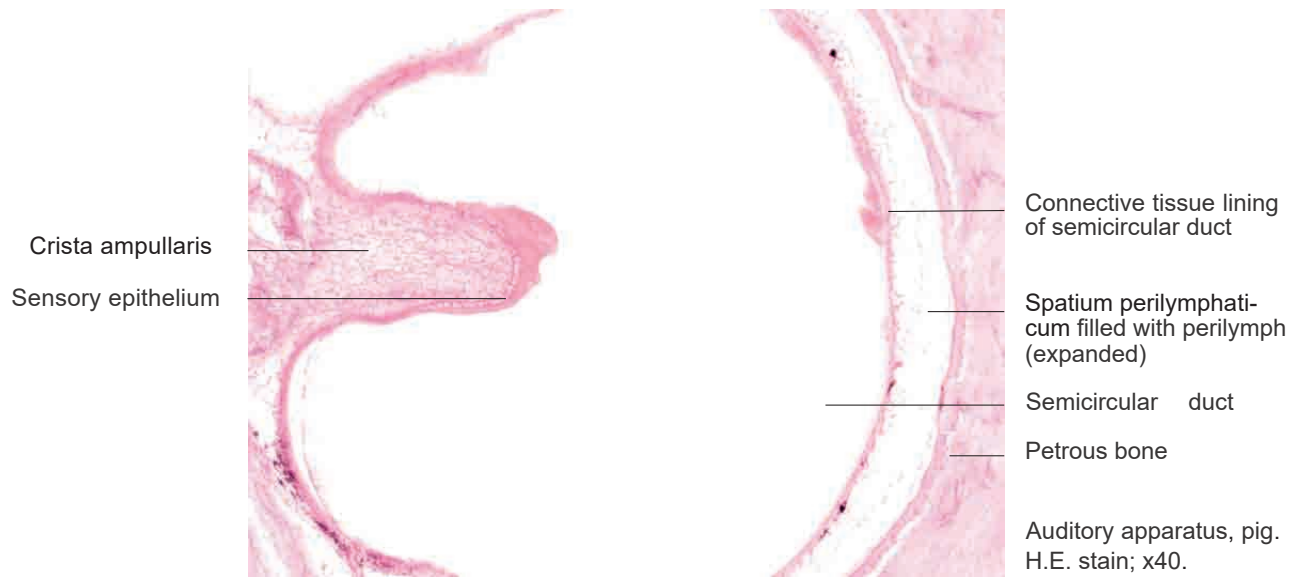
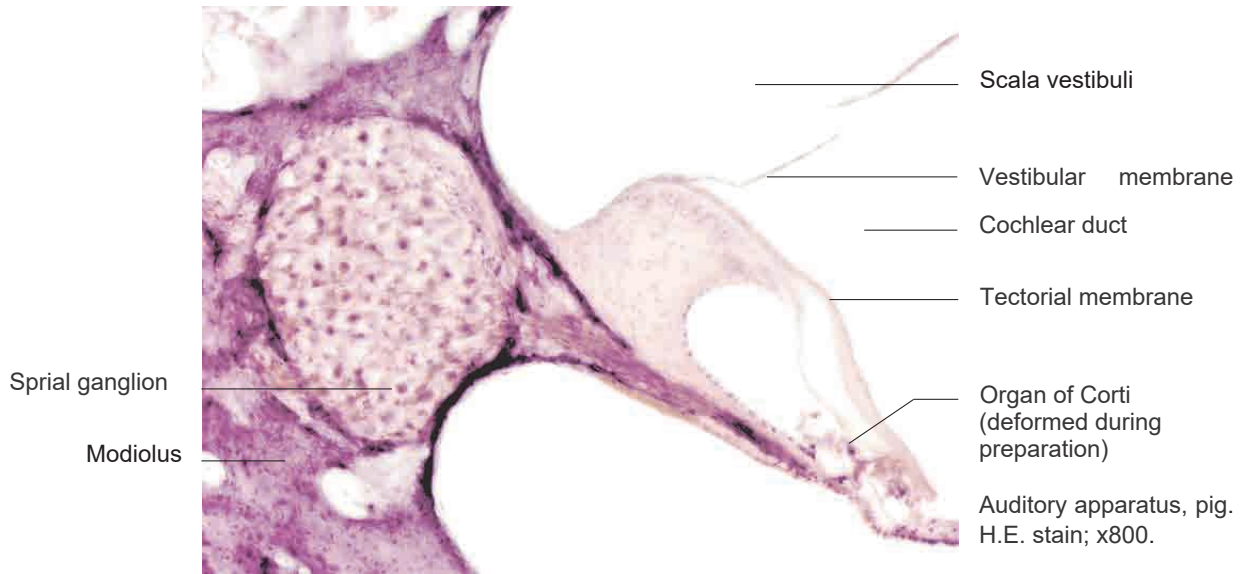




16 Receptors and sense organs

---

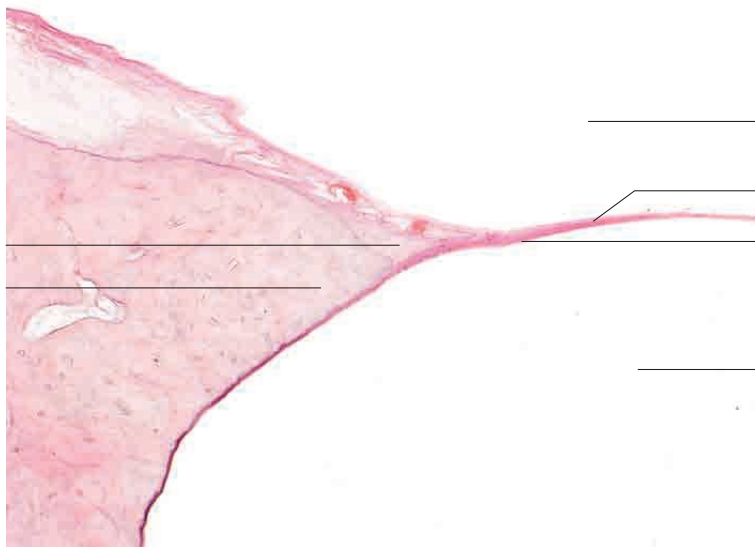
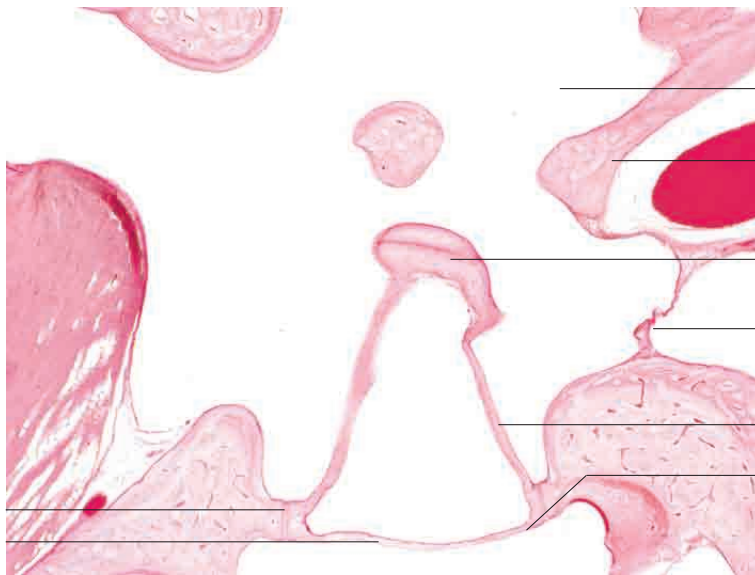


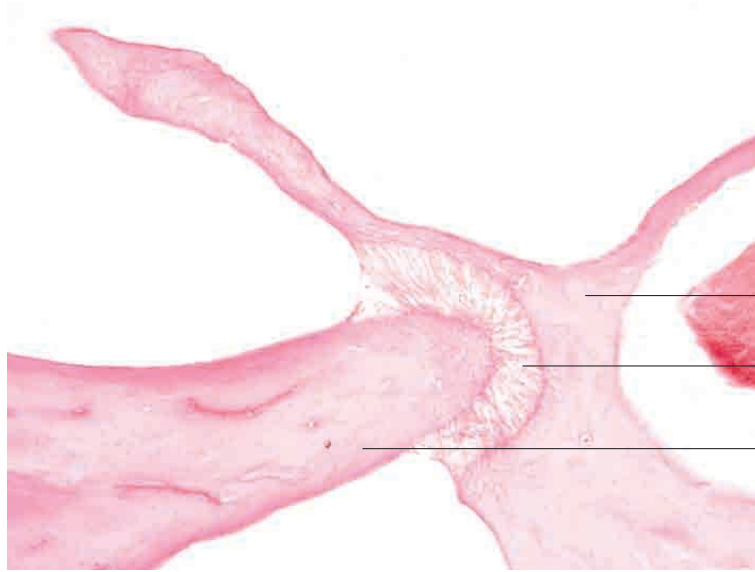




16 Receptors and sensory organs

---



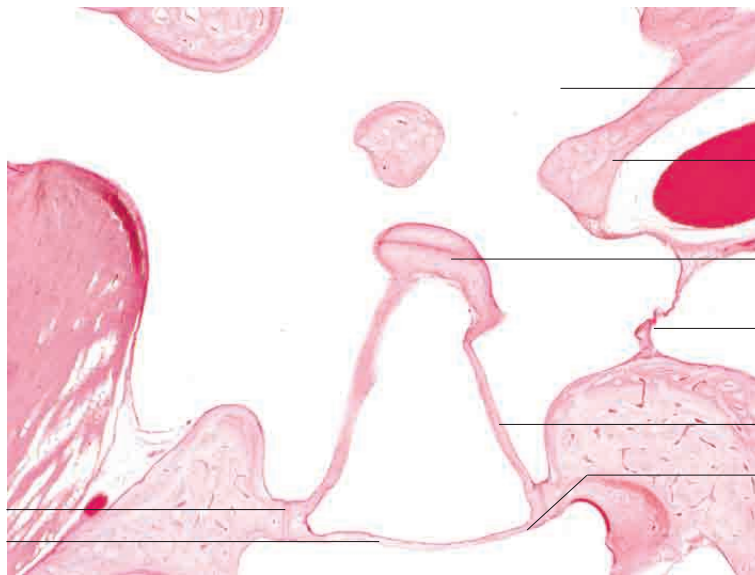


Incus

Joint between incus and malleus

Malleus

Auditory ossicles, rabbit. H.E. stain; x100.



Middle ear

Petrous bone

Head of stapes

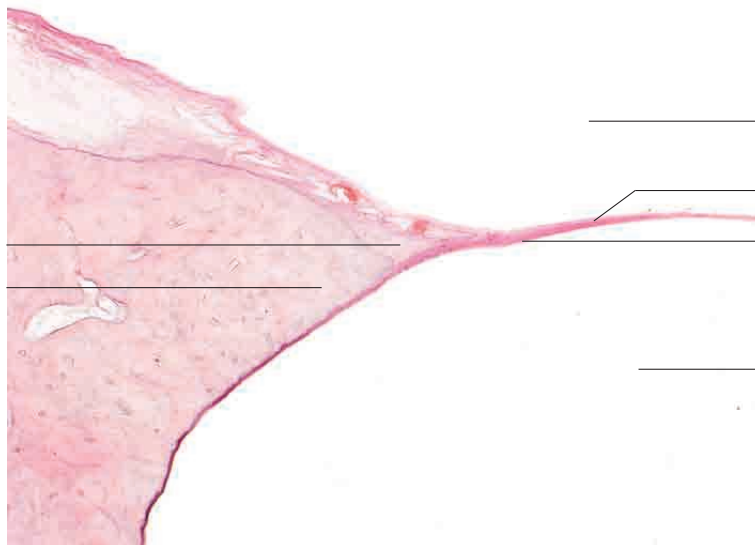
Round window

Limb of stapes

Oval window

Auditory ossicles, rabbit. H.E. stain; x40.

Lig. anulare stapedis  
Base of stapes  
(basis stapedis)



Tympanic cavity

Tympanic membrane

Fibrous layer of tympanic membrane with radial and circular fibres

External acoustic meatus

Auditory ossicles, rabbit. H.E. stain; x40.

Anulus fibrocartilagineus  
Anulus tympanicus