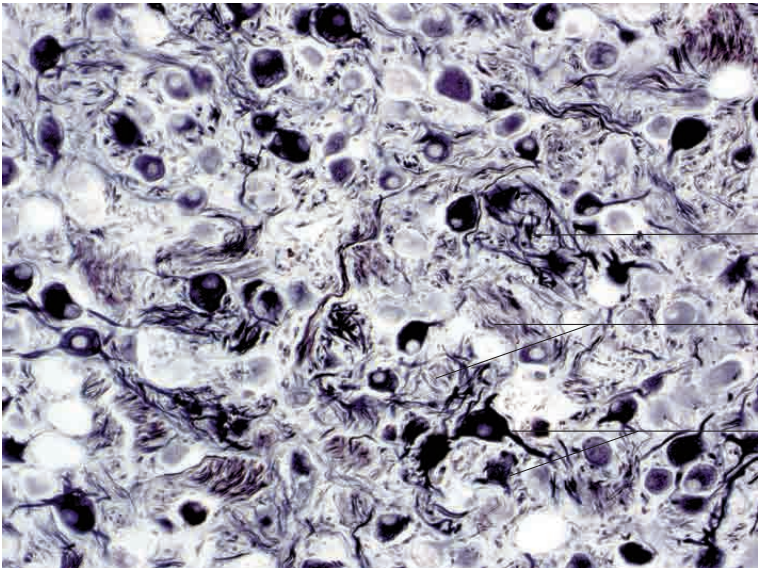


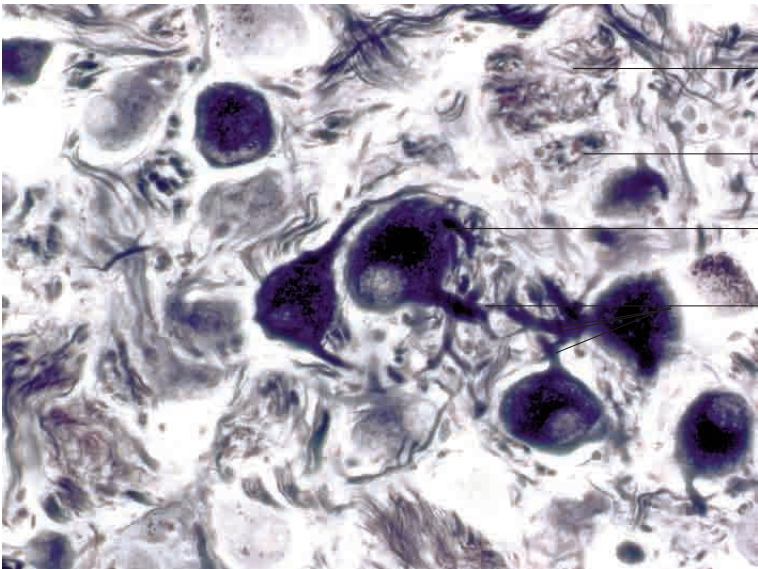
Connective tissue capsule
Nerve fibre bundle
Multipolar nerve cells

Autonomic ganglion, horse. Silver impregnation; x100.



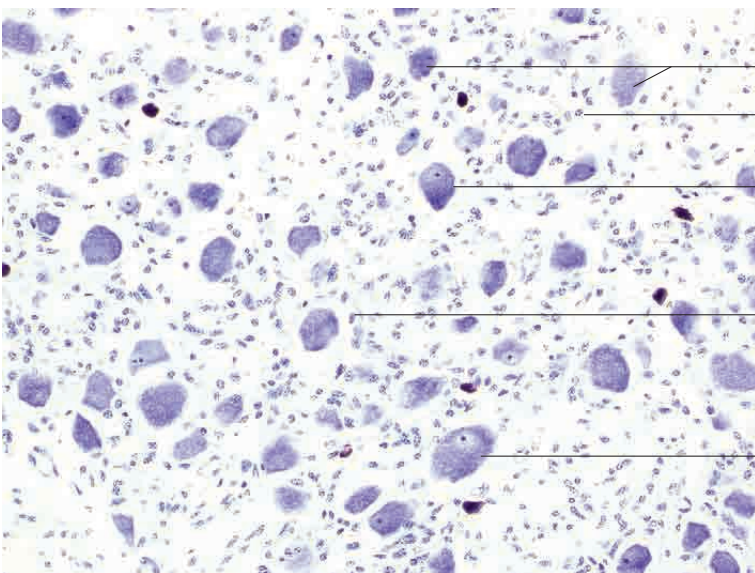
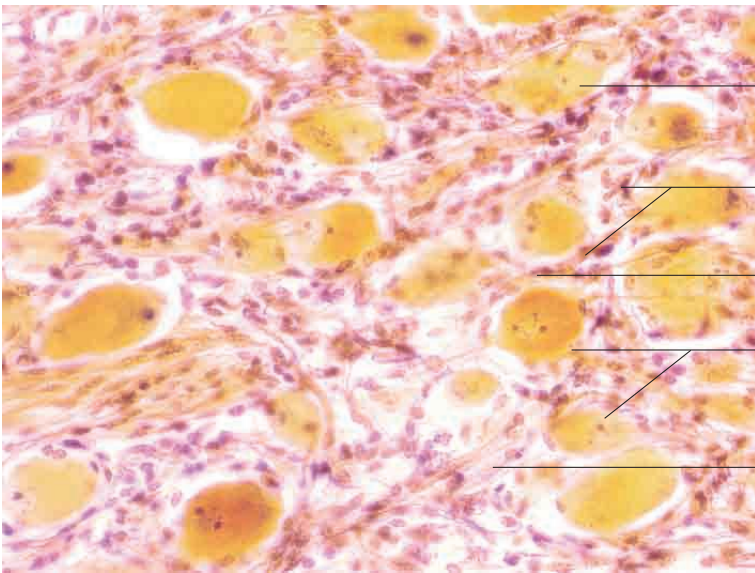
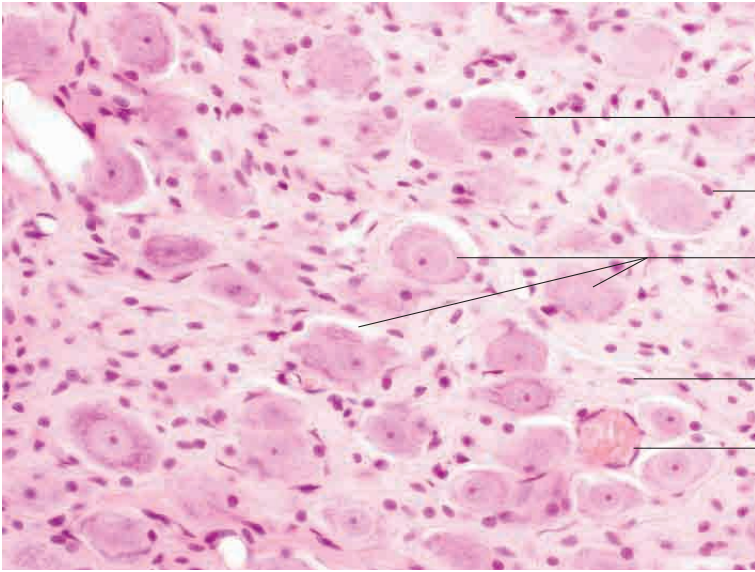
Nerve fibre bundle
Nerve fibre bundle
Multipolar nerve cells

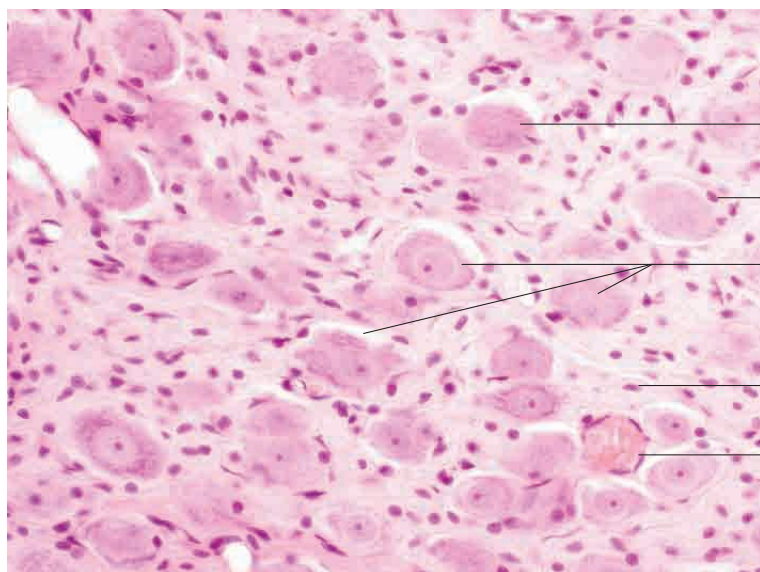
Autonomic ganglion, dog. Silver impregnation; x200.



Nerve fibre bundle
Nerve fibre bundle
Multipolar nerve cell with nucleus and nucleolus (perikaryon)
Multipolar nerve cells (cell processes)

Autonomic ganglion, dog. Silver impregnation; x400.





Multipolar nerve cell (partial section)

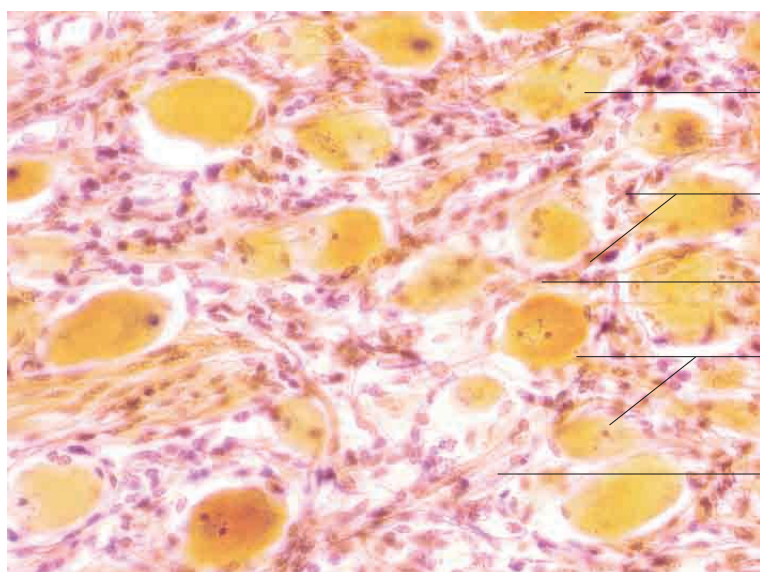
Mantle cell

Multipolar nerve cells

Connective tissue with fibrocyte

Blood vessel

Stellate ganglion, cat. H.E. stain; x400.



Multipolar nerve cell (partial section)

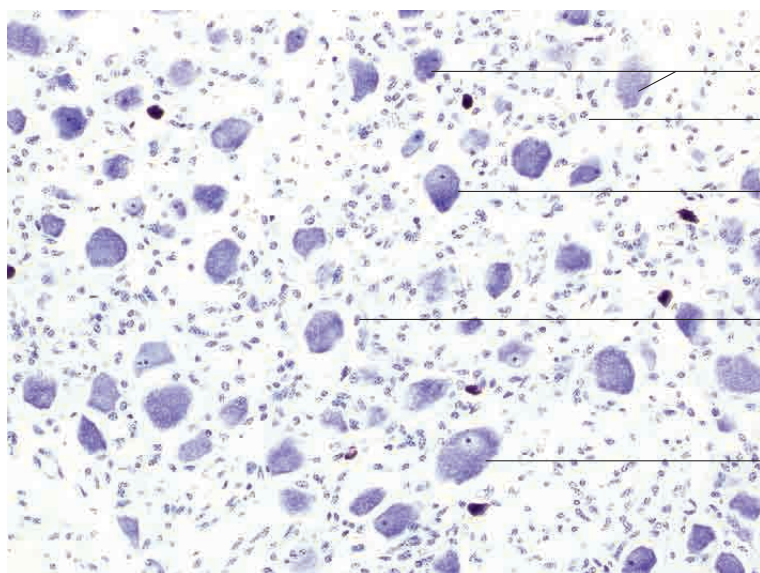
Mantle cell

Connective tissue with fibrocyte

Multipolar nerve cells

Nerve fibre bundle

Stellate ganglion. Cajal stain; x400.



Multipolar nerve cells (partial sections)

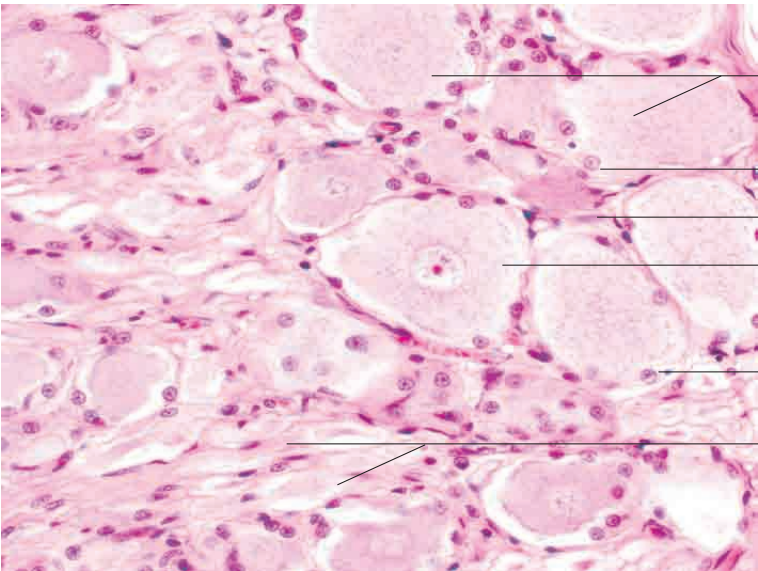
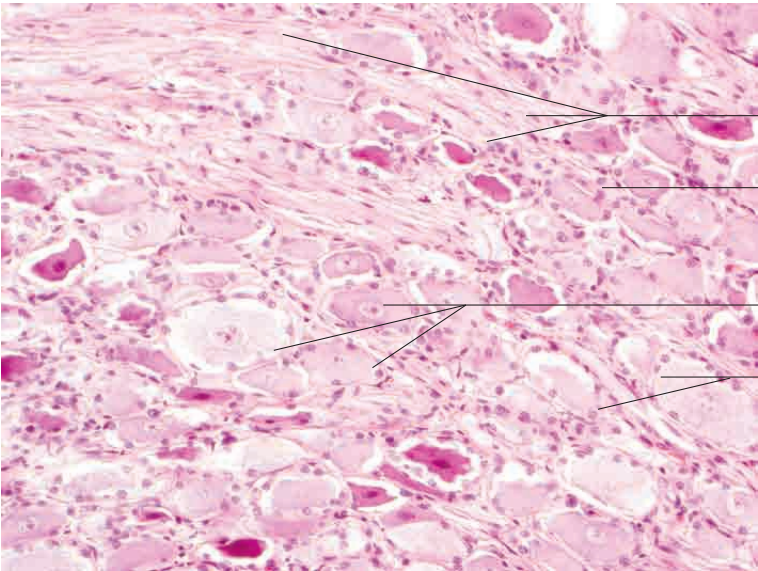
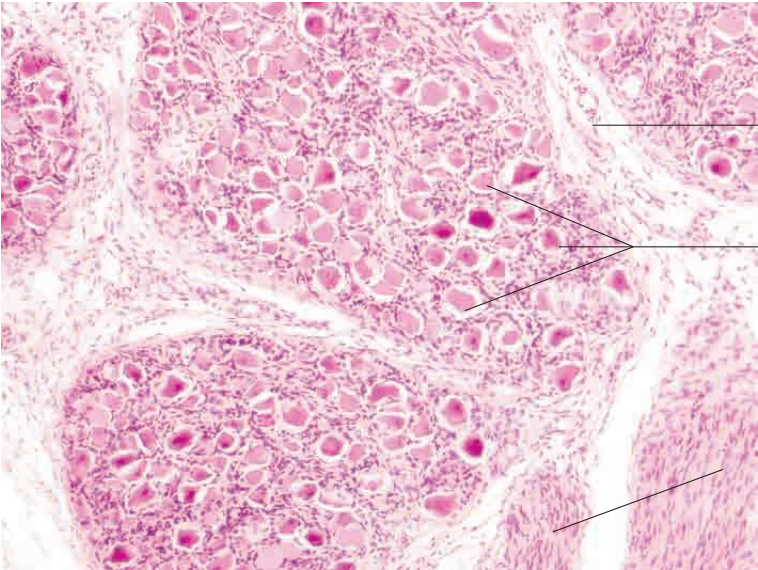
Connective tissue with fibrocytes

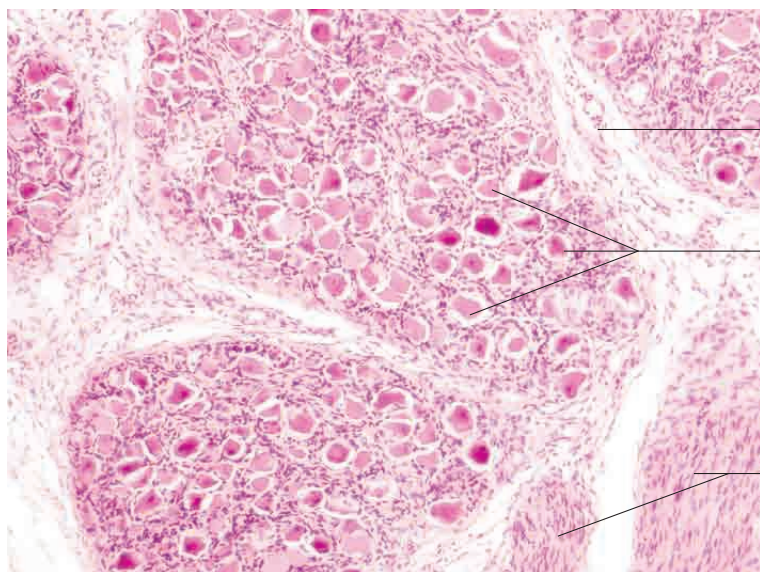
Multipolar nerve cells

Mantle cells

Multipolar nerve cell with nucleus and nucleolus (perikaryon)

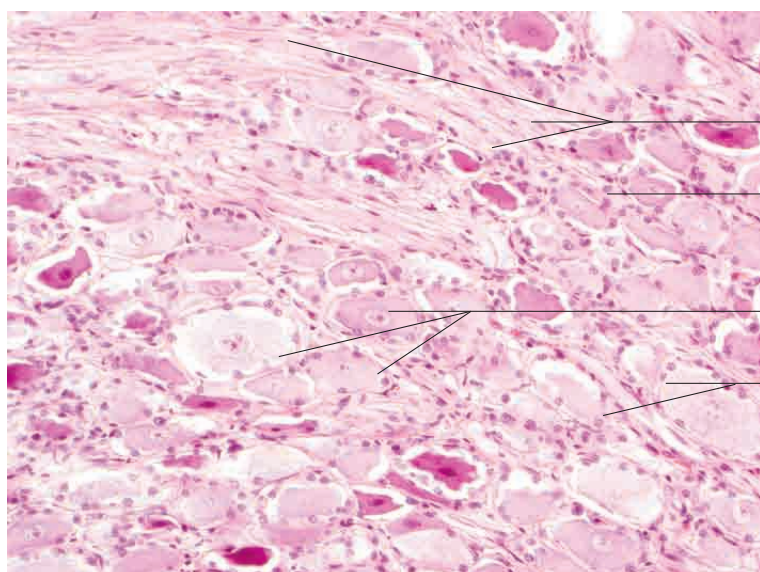
Stellate ganglion, ox. Nissl stain; x200.





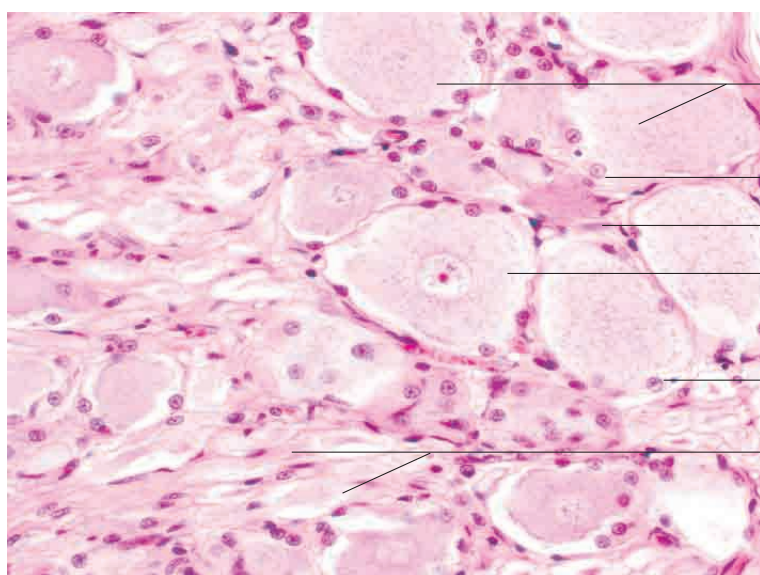
- Loose connective tissue
- Nerve cells
- Nerve fibre bundles

Spinal ganglion, dog. H.E. stain; x100.



- Sensory nerve fibre bundles
- Loose connective tissue
- Nerve cells
- Mantle cells

Spinal ganglion, cat. H.E. stain; x200.



- Nerve cells (partial sections)
- Mantle cells
- Loose connective tissue
- Pseudounipolar nerve cell
- Mantle cells
- Sensory nerve fibre bundles

Spinal ganglion, cat. H.E. stain; x400.